



**ROSEDALE GOLD-MINE-ET \*RC VG-89-2YR  
DAM OF LOT 1**



**LAVENDER RUBY REDROSE-RED EX-96 3E  
2ND DAM OF LOT 1**



### FOUR #1 EMBRYOS

- Worldwide Export Available

#### Holstein Plaza Contacts:

Steve Mower +1 240-520-5906  
Jennifer Dingbaum +1 320-250-2412

#### Gillette Windhammer

8932157C EX-95 EXTRA'11 \*TV \*TL  
PTA +297M +56F +10P 87%R 12/11  
PTA +2.95T +2.67UDC +2.49FLC 81%R  
GTPI +1693G / GLPI+2290 Conf+19

#### Rosedale Gold-Mine-ET \*RC

140104442 Very Good-89 VVVEE @ 2YR  
2-04 2x 204d 17405 45 787 3.1 547 inc.  
• HHM All-American Junior 2-Yr-Old 2011  
• 3rd Junior 2-Yr-Old, Int'l Holstein Show 2011

#### Sandy-Valley Bolton-ET

131823833 Excellent-90 GM 8/10 \*TV \*TL  
PTA +1945M +70F +51P 99%R 12/11  
PTA +2.77T +2.63UDC +2.25FLC  
GTPI +2010G

#### Gillette Blitz 2nd Wind-ET

7352248C Very Good-88-CAN 34\*  
2-02 3x 365d 39096 3.6 1422 3.0 1182

#### Braedale Goldwyn

10705608C GP-CAN EX'05 GM 8/08 \*TV \*TL  
PTA +194M +36F +18P 99%R 12/11  
PTA +3.09T +2.61UDC +2.70FLC  
GTPI +1988G

#### Lavender Ruby Redrose-Red

7254370C Excellent-96 EEEEE 4E  
7-04 2x 365d 52104 4.9 2576 3.4 1752  
5-04 2x 365d 42880 4.2 1803 3.3 1411  
4-00 2x 365d 43760 3.6 1559 3.3 1460  
10-3 2x 365d 41110 4.8 1969 3.2 1325  
Life: 2332d 236020 4.3 10069 3.3 7822

#### REDROSE!

- 2011 Wisconsin Cow of the Year
- Grand Champion, Int'l Holstein Show 2005
- Supreme Champion, World Dairy Expo 2005
- All-American 5-Year-Old 2005
- Grand Champion, World Dairy Expo 2007
- All-American 125,000 lb. Cow 2007
- HI World R&W Champion 2006 & 2007
- Reserve Sr Champ, World Dairy Expo 2004
- Res. All American 4-Year-Old 2004

#### 3rd thru 8th Dams

**Northrose-I Lavender EX-90 3\***  
3-10 2x 365d 28734 3.6 1034 3.4 974  
**Rosedale Lea-Ann-ET EX-93 2E GMD**  
4-08 3x 365d 39370 3.4 1325 3.1 1202  
**Stookey Elm Park Blackrose-ET**  
EX-96 3E GMD DOM  
7-03 3x 365d 41960 4.3 1796 3.1 1285  
Life: 1609d 149880 4.4 6621 3.3 4940  
• AA & All-Canadian Jr 2-Yr Old 1992  
• AA & All-Canadian Jr 3-Yr Old 1993  
• Reserve All-American 5-Yr Old 1995  
• Reserve All-American Aged Cow 1997  
**Nandette TT Speckle-Red EX-93 DOM**  
4-08 2x 365d 25290 4.7 1195  
• All-American R&W 2-Year Old, 1981  
• All-American R&W Aged Cow, 1984  
**Nandette Riley Nana-Red VG-87**  
7-01 2x 365d 20070 3.4 677 3.1 621  
**Nandette Bootmake Gale VG-89**  
5-07 2x 305d 22300 4.0 896  
Life: 2181d 129410 3.8 4916



**GOLD-N-OAKS MARABELL-ET VG-87 DOM**  
MATERNAL SISTER TO DAM OF LOT 2



**GOLD-N-OAKS S MARBELLA-ET VG-89 EX-MS DOM**  
2ND DAM OF LOT 2



### FIVE #1 EMBRYOS

• Worldwide Export Available

#### Holstein Plaza Contacts:

Steve Mower +1 240-520-5906  
Jennifer Dingbaum +1 320-250-2412

#### Ronelee Super Dean-ET

140969366  
PTA +2321M +61F +68P 77%R 12/11  
PTA +866NM\$ +7.6PL 2.79SCS +2.1DPR  
PTA +2.05T +1.83UDC +1.31FLC 73%R  
GTPI +2408G

#### Gold-N-Oaks Marcona 1927-ET

66340467 Very Good-85 @ 2-05 VG-MS  
GTPI+2109 +333M +48F +24P +3.10T  
• #2 Active daughter on the locator list 12/11

Full sister to Marcona

#### Gold-N-Oaks Solitare1913-ET

VG-86 VG-MS at 3-01 • GTPI+2158  
• #1 GTPI Active daughter on locator list  
**Gold-N-Oaks Marabell-ET VG-87**  
• #26 GTPI Cow from Locator List 12/11

#### Charlesdale Superstition-ET

62065919 \*TV \*TL  
PTA +1731M +32F +52P 93%R 12/11  
PTA +2.06T +2.02UDC +.72FLC  
GTPI +2201G

#### Ronelee Toystory Darva

138151278 Excellent-92 DOM  
2-00 3x 365d 34670 3.3 1138 3.3 1148

#### Alpag Iron Active-ET

ITA 6920009167 GM 8/11 \*TV \*TL  
PTA +283M +43F +20P 97%R 12/11  
PTA +1.04T +.42UDC +.35FLC 96%R 12/11  
GTPI +1857G

#### Gold-N-Oaks S Marbella-ET

62213305 Very Good-89 EX-MS DOM  
GTPI+2045 +903M +35F +29P +4.16T  
2-00 2x 365d 31580 4.2 1321 3.2 1008  
• #3 PTAT Cow on the locator list 12/11

#### 4th thru 9th Dams

##### Gold-N-Oaks Marshl Cinda-ET

VG-87 GMD DOM  
3-06 2x 365d 41950 4.1 1720 3.3 1383  
Life: 1236d 126520 4.3 5416 3.4 4324

##### Gold-N-Oaks Bosco Cinnamon EX-92

5-03 2x 350d 41550 4.8 1993 3.0 1244

##### Gold-N-Oaks Duster Cindy VG-88 DOM

3-03 2x 365d 41700 4.3 1774 3.1 1299  
Life: 1161d 112960 4.1 4542 3.3 3754

##### Gold-N-Oaks Melwood Cinder

VG-89 GMD  
3-02 2x 365d 37090 3.4 1243 3.0 1130

##### Gold-N-Oaks Cinder Cinnamon VG-85

2-02 2x 340d 24230 3.9 939 3.1 753

##### Gold-N-Oaks Command Brandy VG-86

4-07 2x 301d 21620 4.6 999 3.2 686

#### Picston Shottle-ET

598172GBR EX-95-GBR GM 8/08 \*TV \*TL  
PTA +1211M +58F +34P 99%R 12/11  
PTA +2.87T +2.11UDC +1.90FLC  
GTPI +2039G

#### Gold-N-Oaks Morty Malibu-ET

61549321 Excellent-94 EEEEE 2E  
1-11 2x 365d 31260 4.5 1420 3.2 989  
4-05 2x 332d 26230 4.5 1190 3.2 808



**ROSEDALE LEXINGTON EX-92 EEEEE**  
**2X RESERVE ALL-AMERICAN**



**ROSEDALE LEXINGTON EX-92 EEEEE**  
**DAM OF LOT 3**



### FOUR #1 EMBRYOS

- Worldwide Export Available

#### Holstein Plaza Contacts:

Steve Mower +1 240-520-5906

Jennifer Dingbaum +1 320-250-2412

#### Pine-Tree Sid-ET

62175895 VG-86-CAN ST\*10 \*TV \*TL  
PTA -5M +27F +4P 95%R 12/11  
PTA +2.87T +2.69UDC +1.27FLC 91%R  
GPTI +1707G

#### Rosedale Lexington-ET

139462007 Excellent-92 EEEEE @ 3-02  
3-01 2x 163d 14510 5.7 712 3.6 445 inc.  
2-01 2x 317d 21830 4.6 998 3.2 709  
• Reserve All-American Junior 3-Yr-Old 2011  
• HM Intermediate Champ, WDE 2011  
• Reserve All-American Junior 2-Yr-Old 2010

#### Regancrest-MR Drham Sam-ET

207184639 GM 8/06 \*TR \*TV \*TL  
PTA -5M +23F +5P 99%R 12/11  
PTA +1.49T +1.24UDC +1.78FLC  
GTPI +1526G

#### Pine-Tree Finley Minnie-ET

61733050 Very Good-88 DOM  
2-00 3x 305d 25080 3.4 858 3.3 823

#### Braedale Goldwyn

10705608C GP-CAN EX'05 GM 8/08 \*TV \*TL  
PTA +194M +36F +18P 99%R 12/11  
PTA +3.09T +2.61UDC +2.70FLC  
GTPI +1988G

#### Rosedale Lexi-ET

135177644 Very Good-89 EX-MS @ 3-01  
2-02 2x 365d 26800 5.1 1356 2.9 787  
• Res Int Champ, Midwest Spring Nat'l 2007  
• All-Wisconsin Jr 2-Yr-Old Cow 2006  
• 6th Jr 2-Yr-Old, Grand International 2006  
• HM All-American Spring Yrlg Heifer 2005

#### 3rd thru 7th Dams

**Rosedale Lea-Ann-ET** EX-93 2E GMD  
4-08 3x 365d 39370 3.4 1325 3.1 1202  
**Stookey Elm Park Blackrose-ET**  
EX-96 3E GMD DOM  
7-03 3x 365d 41960 4.3 1796 3.1 1285  
Life: 1609d 149880 4.4 6621 3.3 4940  
• AA & All-Canadian Jr 2-Yr Old 1992  
• AA & All-Canadian Jr 3-Yr Old 1993  
• Reserve All-American 5-Yr Old 1995  
• Reserve All-American Aged Cow 1997  
**Nandette TT Speckle-Red** EX-93 DOM  
4-08 2x 365d 25290 4.7 1195  
• All-American R&W 2-Year Old, 1981  
• All-American R&W Aged Cow, 1984  
**Nandette Riley Nana-Red** VG-87  
7-01 2x 365d 20070 3.4 677 3.1 621  
**Nandette Bootmake Gale** VG-89  
5-07 2x 305d 22300 4.0 896  
Life: 2181d 129410 3.8 4916



**R-E-W DAZ BEWITCHED-ET VG-86-2YR VG-MS  
DAM OF LOT 4**



**REGANCREST G BEDAZZLE-ET EX-91 DOM  
2ND DAM OF LOT 4**



## FIVE #1 EMBRYOS

• Worldwide Export Available

### Holstein Plaza Contacts:

Steve Mower +1 240-520-5906

Jennifer Dingbaum +1 320-250-2412

### Mountfield SSI Dcy Mogul-ET

840M003006972816 \*TR \*TV \*TL \*TY \*TD  
PTA +1469M +87F +52P 77%R 12/11  
PTA +6.9PL +897NM\$ 2.67SCS +0.0DPR  
PTA +3.55T +3.80UDC +3.23FLC 73%R  
GTPI +2552G

### R-E-W Daz Bewitched-ET

139825437 Very Good-86-2YR VG-MS  
GTPI+2214 +1069M +59F +41P +4.04T  
2-03 2x 104d 9860 3.7 365 3.2 311 inc.  
• Dorcy daughter +4.89T - #2 PTAT in the U.S.  
• Observer daughter +2479 GTPI

### Coyne-Farms Dorcy-ET

139005002 \*BY \*TV \*TL  
PTA +1344M +46F +38P 78%R 12/11  
PTA +3.23T +3.62UDC +2.67FLC  
GTPI +2284G

### Mountfield Marsh Maxine-ET

62784081 Very Good-88 EX-MS DOM  
2-03 2x 159d 14324 4.3 611 3.2 454

### Picston Shottle-ET

598172GBR EX-95-GBR GM 8/08 \*TV \*TL  
PTA +1211M +58F +34P 99%R 12/11  
PTA +2.87T +2.11UDC +1.90FLC  
GTPI +2039G

### Regancrest G Bedazzle-ET

62496924 Excellent-91 EEVEV DOM  
4-04 2x 365d 44260 3.7 1628 3.2 1416  
1-10 2x 365d 32630 4.5 1455 3.0 974  
sired by: Braedale Goldwyn

### 3rd thru 9th Dams

#### Regancrest-PR Barbie-ET

EX-92 EEEEE GMD DOM  
2-06 2x 365d 31690 3.9 1237 3.1 990  
• HM All-American Junior 3-Yr Old 2004  
• Former #1 Type Cow

#### Regancrest Juror Brina-ET EX-92 GMD

4-04 2x 365d 40640 3.6 1478 2.8 1140  
• Member Nom AA Best 3 Females 2000  
• Res Grand Champ Iowa State Show 2000

#### Regancrest Aerostar Bert-ET

EX-90 GMD DOM  
5-02 2x 365d 37790 3.6 1357 3.0 1143  
Life: 1305d 109350 3.7 4031 3.1 3350

#### Regancrest Mark Chairman Bea

EX-91 2E GMD  
7-09 2x 365d 33630 3.8 1276 2.9 988  
Life: 2036d 140130 4.1 5711 3.1 4350

#### Regancrest Board Chairman Bea EX-90

5-09 2x 365d 26010 4.1 1059 3.2 835

#### Regancrest Apache Standout Bea VG-86

4-10 2x 320d 19070 4.0 766  
Life: 2432d 131940 3.6 4744

#### Regancrest Standout Bertrand VG-85

4-01 2x 355d 17460 3.3 571



**HARVUE TALENT MOLLIE EX-90**  
DAM OF LOT 5



**HARVUE ROY FROSTY EX-96 2E**  
2ND DAM OF LOT 5



### THREE #1 EMBRYOS

- Worldwide Export Available

#### Holstein Plaza Contacts:

Steve Mower +1 240-520-5906  
Jennifer Dingbaum +1 320-250-2412

#### Lookout P Redburst-ET \*RC

106030980C  
PTA +329M +14F +27P 76%R 12/11  
PTA +4.3PL +416NM\$ 2.88SCS +0.6DPR  
PTA +3.47T +3.32UDC +3.24FLC 72%R  
GTPI +2092G

#### Harvue Talent Mollie \*RC

52799309 Excellent-90  
2-03 2x 365d 26720 4.2 1122 3.5 940

Dam of:

**Mr Burns Maxwell-Red-ET** • GTPI+1642  
at ABS Global

#### Scientific Destry-ET

138122625 Very Good-87 \*RC \*TV \*TL  
PTA -545M +0F +7P 95%R 12/11  
PTA +3.13T +2.90UDC +2.34FLC  
GTPI +1977G

#### Regancrest MB Breyell-ET

63606863 Very Good-87-2YR-CAN  
2-03 2x 365d 31876 3.1 994 3.1 992

#### Ladino Park Talent-Imp-ET

AUS 930377 EX-90 ST'03 \*RC \*TV \*TL  
PTA -217M -29F +4P 99%R 12/11  
PTA +2.12T +2.34UDC +1.04FLC  
GTPI +1446G

#### Harvue Roy Frosty

52378753 Excellent-96 EEEEE 2E  
5-07 2x 365d 44710 5.0 2222 3.0 1332  
3-10 2x 365d 37496 4.5 1679 3.1 1174  
2-03 2x 365d 24750 4.2 1043 3.3 815

#### FROSTY!

- Voted All-World Holstein International 2010
- All-American Aged Cow 2010
- Supreme Champion, World Dairy Expo 2010
- Grand Champion, International Show 2010
- 1st Aged Cow, International Show 2010
- Unanimous All-American 5-Year-Old 2009
- Unanimous All-Canadian 5-Year-Old 2009
- Supreme Champion, World Dairy Expo 2009
- Grand Champion, International Show 2009
- Res Grand Champ, Royal Winter Fair 2009
- Peoples Choice Cow Winner AA Contest 2009
- All-American Senior 3-Year-Old 2007
- Res Grand Champ, International Show 2007
- Nom All-American Sr 2-Year-Old 2006
- 1st Senior 2-Year-Old, Eastern National 2006

#### 3rd thru 7th Dams

**Harvue Sam Heidi EX-93 EEEEE 3E**  
5-07 2x 365d 34700 4.6 1586 3.2 1115  
Life: 2480d 183870 4.5 8335 3.4 6312

#### Harvue Skybuck Harmony VG-88

2-00 2x 263d 17520 4.4 775 3.4 600  
• 2nd Summer Yearling, Eastern Nat'l 1994

#### Harvue Melvin Hallie VG-88

4-08 2x 365d 33691 4.4 1490 3.2 1093  
Life (3 Lacs) 102121 4.2 4270 3.3 3355

#### Harvue Bell Harrison VG-86 GMD DOM

8-11 2x 365d 38040 3.4 1301 3.0 1124  
Life (7 Lacs): 264118 3.5 9268 3.1 8221

#### Harvue Libido Harrison VG-87

6-00 2x 365d 22359 3.8 842



**HARVUE TALENT MOLLIE EX-90**  
DAM OF LOT 6



**HARVUE ROY FROSTY EX-96 2E**  
2ND DAM OF LOT 6



**Holstein Plaza Contacts:**

Steve Mower +1 240-520-5906  
Jennifer Dingbaum +1 320-250-2412

**Mr Savage-ET \*RC**

66985574 \*TV \*TL  
PTA +168M +50F +18P 79%R 12/11  
PTA +3.04T +3.03UDC +2.22FLC 75%R  
GTPI +2097G

**Harvue Talent Mollie \*RC**

52799309 Excellent-90  
2-03 2x 365d 26720 4.2 1122 3.5 940

Dam of:

**Mr Burns Maxwell-Red-ET • GTPI+1642**  
at ABS Global

## FOUR #1 EMBRYOS

• Worldwide Export Available

**Picston Shottle-ET**

598172GBR EX-95-GBR GM 8/08 \*TV \*TL  
PTA +1211M +58F +34P 99%R 12/11  
PTA +2.87T +2.11UDC +1.90FLC  
GTPI +2039G

**Gen-I-Beq Goldwyn Secret-ET**

103506629C VG-87-2YR-CAN 2\*  
2-00 2x 365d 25593 4.8 1237 3.6 917

**Ladino Park Talent-Imp-ET**

AUS 930377 EX-90 ST'03 \*RC \*TV \*TL  
PTA -217M -29F +4P 99%R 12/11  
PTA +2.12T +2.34UDC +1.04FLC  
GTPI +1446G

**Harvue Roy Frosty**

52378753 Excellent-96 EEEEE 2E  
5-07 2x 365d 44710 5.0 2222 3.0 1332  
3-10 2x 365d 37496 4.5 1679 3.1 1174  
2-03 2x 365d 24750 4.2 1043 3.3 815

**FROSTY!**

- Voted All-World Holstein International 2010
- All-American Aged Cow 2010
- Supreme Champion, World Dairy Expo 2010
- Grand Champion, International Show 2010
- 1st Aged Cow, International Show 2010
- Unanimous All-American 5-Year-Old 2009
- Unanimous All-Canadian 5-Year-Old 2009
- Supreme Champion, World Dairy Expo 2009
- Grand Champion, International Show 2009
- Res Grand Champ, Royal Winter Fair 2009
- Peoples Choice Cow Winner AA Contest 2009
- All-American Senior 3-Year-Old 2007
- Res Grand Champ, International Show 2007
- Nom All-American Sr 2-Year-Old 2006
- 1st Senior 2-Year-Old, Eastern National 2006

**3rd thru 7th Dams**

**Harvue Sam Heidi EX-93 EEEEE 3E**  
5-07 2x 365d 34700 4.6 1586 3.2 1115  
Life: 2480d 183870 4.5 8335 3.4 6312

**Harvue Skybuck Harmony VG-88**

2-00 2x 263d 17520 4.4 775 3.4 600  
• 2nd Summer Yearling, Eastern Nat'l 1994

**Harvue Melvin Hallie VG-88**

4-08 2x 365d 33691 4.4 1490 3.2 1093  
Life (3 Lacs) 102121 4.2 4270 3.3 3355

**Harvue Bell Harrison VG-86 GMD DOM**

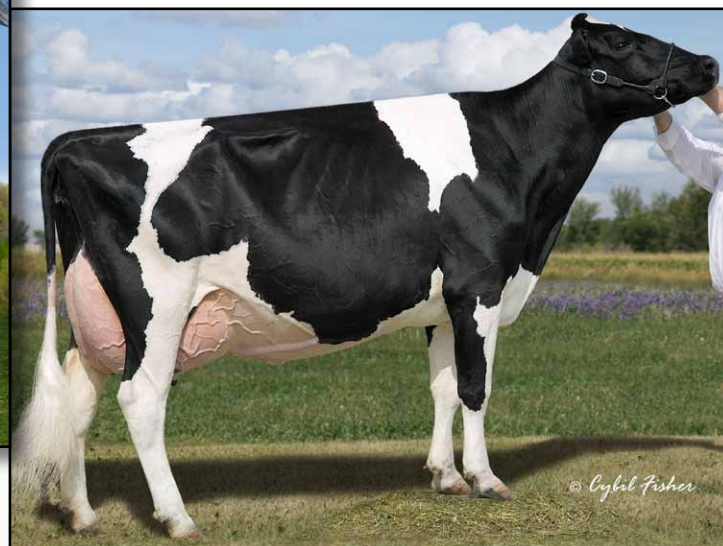
8-11 2x 365d 38040 3.4 1301 3.0 1124  
Life (7 Lacs): 264118 3.5 9268 3.1 8221

**Harvue Libido Harrison VG-87**

6-00 2x 365d 22359 3.8 842



**WHITTIER-CF GOLD LILA-ET VG-87-CAN**  
**DAM OF LOT 7**



**LYLEHAVEN LILA Z EX-94-CAN**  
**3RD DAM OF LOT 7**



**FIVE #1 EMBRYOS**

• *Worldwide Export Available*

**Holstein Plaza Contacts:**

Steve Mower +1 240-520-5906  
Jennifer Dingbaum +1 320-250-2412

**Flevo Genetics Snowman-ET**

388965513NLD  
PTA +2206M +80F +66P 90%R 12/11  
PTA +3.9PL +669NM\$ 2.72SCS -1.2DPR  
PTA +2.34T +1.75DUC +2.8FLC 87%R  
GTPI +2258G

**Whittier-CF Gold Lila-ET**

138842837 Very Good-87-4YR-CAN  
GTPI+1762 +2.36T +2.07UDC +1.44FLC  
3-10 2x 195d 16594 3.9 569 3.4 538 inc.  
2-01 2x 365d 28532 4.0 1151 3.4 970  
• *Daughter by Planet, Velthuis Planet Lia*  
*VG-85-2YR-CAN GPA-LPI+2860*

**O-Bee Manfred Justice-ET**

122358313 EX-94 GM 8/08 \*TR \*TV \*TL  
PTA +854M +66F +48P 99%R 12/11  
PTA +.09T -.37UDC +1.18FLC  
GTPI +2052G

**Broeks MBM Elsa-ET**

381135900NLD Excellent-90  
2-03 2x 305d 24063 4.7 1120 3.4 823

**Braedale Goldwyn**

10705608C GP-CAN EX'05 GM 8/08 \*TV \*TL  
PTA +194M +36F +18P 99%R 12/11  
PTA +3.09T +2.61UDC +2.70FLC  
GTPI +1988G

**Calbrett Shottle Laura-ET**

7809632C Very Good-88-2YR 2\*  
2-00 2x 365d 26810 4.2 1118 3.4 917

**4th thru 6th Dams**

**Lylehaven Form Laura-ET EX-94 3E**  
6-02 2x 365d 35510 4.2 1484 3.1 1088  
• *HHM All-American Four-Year-Old 2003*  
• *Res All-Canadian Jr 3-Year-Old 2002*  
**Thiersant Lili Starbuck-ET EX-94 4E**  
9-11 2x 365d 30910 4.5 1385 3.3 1023  
Life: 2925d 207386 4.7 9747 3.4 7052  
**Ivyhall Astro Jet Ronie VG-86-CAN**  
5-04 2x 305d 18472 4.2 769 3.1 578

**Picston Shottle-ET**

598172GBR EX-95-GBR GM 8/08 \*TV \*TL  
PTA +1211M +58F +34P 99%R 12/11  
PTA +2.87T +2.11UDC +1.90FLC  
GTPI +2039G

**Lylehaven Lila Z**

132449139 Excellent-94-CAN 9\*  
4-05 2x 365d 49101 4.0 1960 3.5 1695  
Life (3 Lacs): 166194 3.9 6504 3.4 5701  
• *HM All-Canadian 5-Year-Old 2007*  
• *HM All-Canadian 4-Year-Old 2006*  
• *All-Canadian Jr 2-Yr-Old Cow 2004*



**CALBRETT SHOTTLE LAURA-ET VG-88-2YR**  
**2ND DAM OF LOT 8**



**LYLEHAVEN LILA Z EX-94-CAN**  
**3RD DAM OF LOT 8**



**FIVE #1 EMBRYOS**

• *Worldwide Export Available*

**Holstein Plaza Contacts:**

Steve Mower +1 240-520-5906

Jennifer Dingbaum +1 320-250-2412

**Gillette Stanleycup**

8932152C \*TY

PTA +297M +56F +10P 87%R 12/11

PTA +2.95T +2.67UDC +2.50FLC 81%R

GTPI +1694G

**Velthuis MOM Laura-ET**

11026713

Born: September 15, 2010

GPA-LPI+2350 • Conf+13

**Sandy-Valley Bolton-ET**

131823833 Excellent-90 GM 8/10 \*TV \*TL

PTA +1945M +70F +51P 99%R 12/11

PTA +2.77T +2.63UDC +2.25FLC

GTPI +2010G

**Gillette Blitz 2nd Wind-ET**

7352248C Very Good-88-CAN 34\*

2-02 3x 365d 39096 3.6 1422 3.0 1182

**Long-Langs Oman Oman-ET**

135746776 VG-85 GM 1/10 \*TV \*TL

PTA +1277M +70F +67P 94%R 12/11

PTA +1.83T +1.40UDC +2.00FLC

GTPI +2206G

**Calbrett Shottle Laura-ET**

7809632C Very Good-88-2YR 2\*

2-00 2x 365d 26810 4.2 1118 3.4 917

**4th thru 6th Dams**

**Lylehaven Form Laura-ET EX-94 3E**

6-02 2x 365d 35510 4.2 1484 3.1 1088

• *HHM All-American Four-Year-Old 2003*

• *Res All-Canadian Jr 3-Year-Old 2002*

**Thiersant Lili Starbuck-ET EX-94 4E**

9-11 2x 365d 30910 4.5 1385 3.3 1023

Life: 2925d 207386 4.7 9747 3.4 7052

**Ivyhall Astro Jet Ronie VG-86-CAN**

5-04 2x 305d 18472 4.2 769 3.1 578

**Picston Shottle-ET**

598172GBR EX-95-GBR GM 8/08 \*TV \*TL

PTA +1211M +58F +34P 99%R 12/11

PTA +2.87T +2.11UDC +1.90FLC

GTPI +2039G

**Lylehaven Lila Z**

132449139 Excellent-94-CAN 9\*

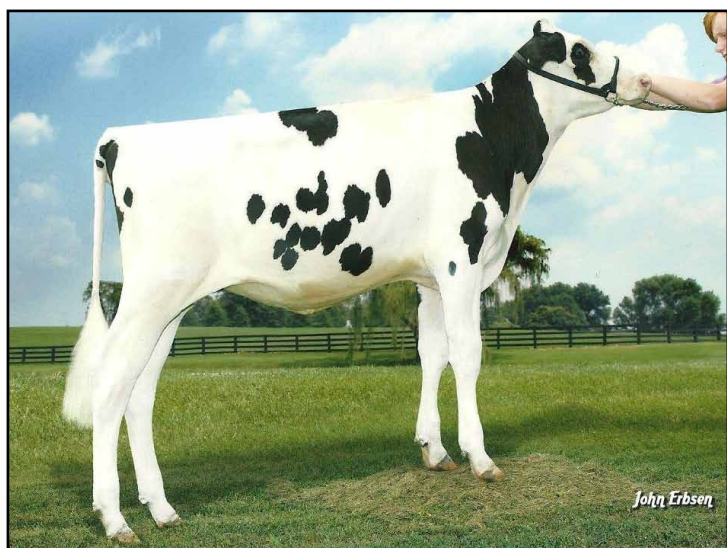
4-05 2x 365d 49101 4.0 1960 3.5 1695

Life (3 Lacs): 166194 3.9 6504 3.4 5701

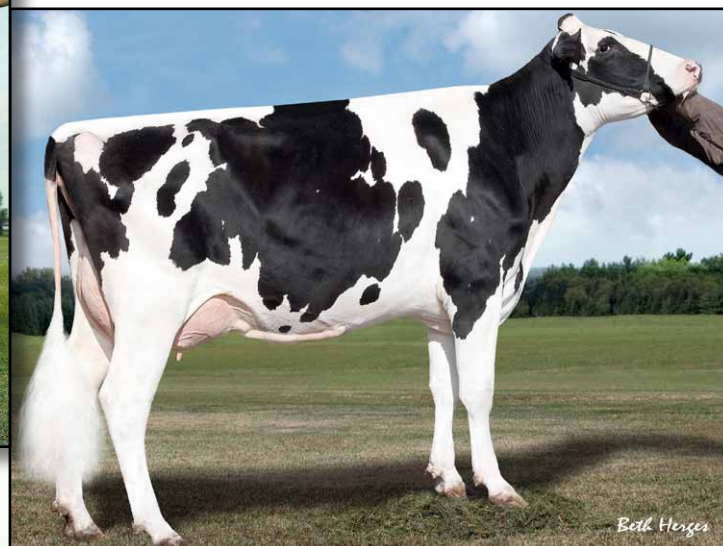
• *HM All-Canadian 5-Year-Old 2007*

• *HM All-Canadian 4-Year-Old 2006*

• *All-Canadian Jr 2-Yr-Old Cow 2004*



**GBM OBSERVER 4905-ET**  
DAM OF LOT 9



**GBM SHOTTLE AFRICA-ET EX-90 DOM**  
2ND DAM OF LOT 9



### FIVE #1 EMBRYOS

• *Worldwide Export Available*

#### Holstein Plaza Contacts:

Steve Mower +1 240-520-5906

Jennifer Dingbaum +1 320-250-2412

#### Mountfield SSI Dcy Mogul-ET

840M003006972816 \*TR \*TV \*TL \*TY \*TD  
PTA +1469M +87F +52P 77%R 12/11  
PTA +6.9PL +897NM\$ 2.67SCS +0.0DPR  
PTA +3.55T +3.80UDC +3.23FLC 73%R  
GTPI +2552G

#### GBM Observer 4905-ET

68984585 Born: March 1, 2011  
GTPI+2284 +1310M +66F +42P +3.86T

#### Coyne-Farms Dorcy-ET

139005002 \*BY \*TV \*TL  
PTA +1344M +46F +38P 78%R 12/11  
PTA +3.23T +3.62UDC +2.67FLC  
GTPI +2284G

#### Mountfield Marsh Maxine-ET

62784081 Very Good-88 EX-MS DOM  
2-03 2x 159d 14324 4.3 611 3.2 454

#### De-Su Observer-ET

65917481 \*TR \*TV \*TL \*TD  
PTA +1465M +58F +47P 78%R 12/11  
PTA +2.74T +2.82UDC +.63FLC 74%R  
GTPI +2342G

#### GBM Shottle Africa-ET

138276212 Excellent-90 EX-MS DOM  
IM GTPI+1867 +598M +42F +22P +3.29T  
2-04 2x 365d 40420 4.5 1824 3.1 1236  
• *7th generation Excellent!*

#### 3rd thru 7th Dams

##### GBM Charles Janelle EX-93 EX-MS 2E DOM

6-03 2x 365d 31640 4.6 1471 3.3 1054  
Life: 2347d 137890 4.8 6645 3.6 4953

##### GBM Val Blackstar Jean-ET EX-94 3E GMD

8-05 2x 365d 37180 3.9 1458 3.0 1119  
Life: 3127d 238190 4.1 9734 3.4 8000

##### GBM Valiant Janice EX-92 2E DOM

5-09 2x 365d 30860 3.5 1080 3.1 948  
Life: 2100d 126200 3.5 4437 3.2 3996

##### Sylvan-Dell M C Janice EX-91 2E DOM

6-03 2x 314d 29600 3.9 1152

##### Sylvan-Dell Atlas Jill EX-90 2E

4-06 2x 305d 20820 3.5 717

#### Picston Shottle-ET

598172GBR EX-95-GBR GM 8/08 \*TV \*TL  
PTA +1211M +58F +34P 99%R 12/11  
PTA +2.87T +2.11UDC +1.90FLC  
GTPI +2039G

#### GBM Durham BC Annabell

132637576 Excellent-90 EX-MS DOM  
2-03 2x 365d 40670 4.1 1673 3.0 1202  
3-06 2x 365d 40050 4.2 1683 3.0 1201  
Life: 1449d 118720 4.4 5253 3.3 3961

• *8 Excellent and 23 Very Good daughters*



**GBM SHOTTLE AFRICA-ET EX-90 DOM**  
**DAM OF LOT 10**



**GBM DURHAM BC ANNABELL EX-90 EX-MS DOM**  
**2ND DAM OF LOT 10**

**10**

**FIVE #1 EMBRYOS**

• *Worldwide Export Available*

**Holstein Plaza Contacts:**

Steve Mower +1 240-520-5906  
Jennifer Dingbaum +1 320-250-2412

**Amighetti Numero Uno-ET**

17990915143 \*TV \*TL \*TY  
PTA +1170M +95F +52P 80%R 12/11  
PTA +986NM\$ +8.2PL 2.59SCS 7%DCE  
PTA +3.37T +3.00UDC +2.42FLC 76%R  
GTPI +2621G

**GBM Shottle Africa-ET**

138276212 Excellent-90 EX-MS DOM  
IM GTPI+1867 +598M +42F +22P +3.29T  
2-04 2x 365d 40420 4.5 1824 3.1 1236  
• *7th generation Excellent!*  
• *Observer daughters GTPI+2297 ♂ +2284G*

**Long-Langs Oman Oman-ET**

135746776 VG-85 GM 1/10 \*TV \*TL  
PTA +1277M +70F +67P 94%R 12/11  
PTA +1.83T +1.40UDC +2.00FLC  
GTPI +2206G

**Amighetti Shottle Ave-ET**

ITA 17990346074 VG-88-2YR-ITA  
2-00 2x 338d 30851 4.1 1274 3.5 1089

**Picston Shottle-ET**

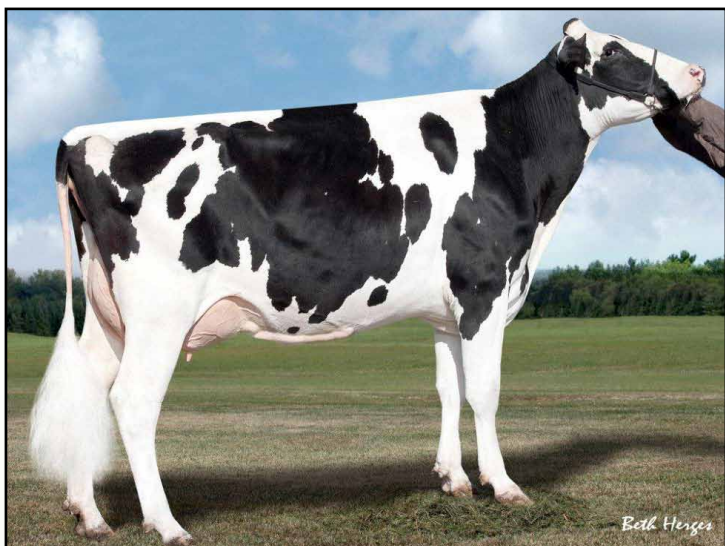
598172GBR EX-95-GBR GM 8/08 \*TV \*TL  
PTA +1211M +58F +34P 99%R 12/11  
PTA +2.87T +2.11UDC +1.90FLC  
GTPI +2039G

**GBM Durham BC Annabell**

132637576 Excellent-90 EX-MS DOM  
2-03 2x 365d 40670 4.1 1673 3.0 1202  
3-06 2x 365d 40050 4.2 1683 3.0 1201  
Life: 1449d 118720 4.4 5253 3.3 3961  
• *8 Excellent and 23 Very Good daughters*

**3rd thru 7th Dams**

**GBM Charles Janelle** EX-93 EX-MS 2E DOM  
6-03 2x 365d 31640 4.6 1471 3.3 1054  
Life: 2347d 137890 4.8 6645 3.6 4953  
**GBM Val Blackstar Jean-ET** EX-94 3E GMD  
8-05 2x 365d 37180 3.9 1458 3.0 1119  
Life: 3127d 238190 4.1 9734 3.4 8000  
**GBM Valiant Janice** EX-92 2E DOM  
5-09 2x 365d 30860 3.5 1080 3.1 948  
Life: 2100d 126200 3.5 4437 3.2 3996  
**Sylvan-Dell M C Janice** EX-91 2E DOM  
6-03 2x 314d 29600 3.9 1152  
**Sylvan-Dell Atlas Jill** EX-90 2E  
4-06 2x 305d 20820 3.5 717



**GBM SHOTTLE AFRICA-ET EX-90 DOM**  
**DAM OF LOT 11**



**GBM DURHAM BC ANNABELL EX-90 EX-MS DOM**  
**2ND DAM OF LOT 11**



**FIVE #1 EMBRYOS**

• *Worldwide Export Available*

**Holstein Plaza Contacts:**

Steve Mower +1 240-520-5906

Jennifer Dingbaum +1 320-250-2412

**Mountfield SSI Dcy Mogul-ET**

840M003006972816 \*TR \*TV \*TL \*TY \*TD  
PTA +1469M +87F +52P 77%R 12/11  
PTA +6.9PL +897NM\$ 2.67SCS +0.0DPR  
PTA +3.55T +3.80UDC +3.23FLC 73%R  
GTPI +2552G

**GBM Shottle Africa-ET**

138276212 Excellent-90 EX-MS DOM  
IM GTPI+1867 +598M +42F +22P +3.29T  
2-04 2x 365d 40420 4.5 1824 3.1 1236  
• *7th generation Excellent!*  
• *Observer daughters GTPI+2297 ♂ +2284G*

**Coyne-Farms Dorcy-ET**

139005002 \*BY \*TV \*TL  
PTA +1344M +46F +38P 78%R 12/11  
PTA +3.23T +3.62UDC +2.67FLC  
GTPI +2284G

**Mountfield Marsh Maxine-ET**

62784081 Very Good-88 EX-MS DOM  
2-03 2x 159d 14324 4.3 611 3.2 454

**Picston Shottle-ET**

598172GBR EX-95-GBR GM 8/08 \*TV \*TL  
PTA +1211M +58F +34P 99%R 12/11  
PTA +2.87T +2.11UDC +1.90FLC  
GTPI +2039G

**GBM Durham BC Annabell**

132637576 Excellent-90 EX-MS DOM  
2-03 2x 365d 40670 4.1 1673 3.0 1202  
3-06 2x 365d 40050 4.2 1683 3.0 1201  
Life: 1449d 118720 4.4 5253 3.3 3961  
• *8 Excellent and 23 Very Good daughters*

**3rd thru 7th Dams**

**GBM Charles Janelle EX-93 EX-MS 2E DOM**

6-03 2x 365d 31640 4.6 1471 3.3 1054  
Life: 2347d 137890 4.8 6645 3.6 4953

**GBM Val Blackstar Jean-ET EX-94 3E GMD**

8-05 2x 365d 37180 3.9 1458 3.0 1119  
Life: 3127d 238190 4.1 9734 3.4 8000

**GBM Valiant Janice EX-92 2E DOM**

5-09 2x 365d 30860 3.5 1080 3.1 948  
Life: 2100d 126200 3.5 4437 3.2 3996

**Sylvan-Dell M C Janice EX-91 2E DOM**

6-03 2x 314d 29600 3.9 1152

**Sylvan-Dell Atlas Jill EX-90 2E**

4-06 2x 305d 20820 3.5 717



**C-HAVEN DAMA ROBYN GTPI+2448**  
**MATERNAL SISTER TO LOT 12**



**C-HAVEN TASHAS SHTL TISH-ET VG-86-2YR**  
**DAM OF LOT 12**



**FIVE #1 EMBRYOS**

• *Worldwide Export Available*

*Maternal sister to Lot 12*

**C-Haven Dama Robyn**  
GTPI+2448 +737NM\$ +6.2PL +1.6DPR

**Holstein Plaza Contacts:**

Steve Mower +1 240-520-5906  
Jennifer Dingbaum +1 320-250-2412

**Tri-Cal Betray-ET**

69728293  
PTA +1212M +51F +55P 76%R 12/11  
PTA +4.8PL +674NM\$ 2.76SCS +0.2DPR  
PTA +4.05T +3.42UDC +3.11FLC 72%R  
GTPI +2389G

**C-Haven Tashas Shtl Tish-ET**

66499616 Very Good-86 VG-MS @ 2-08  
GTPI+2080 +945M +52F +44P +2.91T  
2-04 2x 254d 21126 3.8 808 3.1 662 inc.

**Ronelee Toystory Domain-ET**

137974489 Excellent-90 \*TV \*TL  
PTA +1594M +43F +42P 80%R 12/11  
PTA +3.44T +2.75UDC +1.86FLC 77%R  
GTPI +2298G

**Hendel Goldwyn Beth 2772-ET**

65283197 Very Good-85-2YR

**Picston Shottle-ET**

598172GBR EX-95-GBR GM 8/08 \*TV \*TL  
PTA +1211M +58F +34P 99%R 12/11  
PTA +2.87T +2.11UDC +1.90FLC  
GTPI +2039G

**Ladys-Manor AM Tasha-ET**

61801781 Excellent-92 EX-MS 2E  
5-02 2x 365d 38950 3.6 1395 3.4 1335  
1-11 2x 365d 31230 3.8 1192 3.3 1031

• *sired by: Hartline Titanic*

**3rd thru 9th Dams**

**Ladys-Manor Durham AM-ET**  
EX-91 EX-MS 2E GMD DOM  
5-09 2x 365d 41070 4.1 1691 3.3 1374  
Life: 1901d 165780 4.4 7252 3.4 5719  
**Ladys-Manor Temptress Am-ET**  
VG-89 GMD  
8-05 2x 365d 32100 4.5 1438 3.1 992  
**Ladys-Manor Temptress Jem** EX-91 GMD  
3-02 2x 365d 34450 4.7 1602 3.1 1051  
**Ladys-Manor Top Gun Jemini-ET**  
EX-93 3E GMD  
3-11 2x 365d 36080 3.5 1246 3.1 1106  
Life: 2089d 150300 3.8 5699 3.0 4495  
**Ladys-Manor Delightful Jem** VG-88 GMD  
6-02 2x 365d 31890 4.1 1314 2.9 933  
Life: 1940d 147650 4.0 5946 3.0 4415  
**Ladys-Manor Donnas Delight** VG-85  
8-09 2x 365d 30780 3.7 1141 3.0 911  
Life: 2392d 166610 3.7 6114  
**Ladys-Manor Nancy Archie** EX-90 2E GMD  
Life: 2647d 156000 3.7 5834



**COYNE-FARMS OBSERVER YEM-ET GTPI+2214  
DAM OF LOT 13**



**COYNE-FARMS SHOTTLE YEAH-ET VG-88 EX-MS DOM  
2ND DAM OF LOT 13**

# 13

## SIX #1 EMBRYOS

• Worldwide Export Available

### Holstein Plaza Contacts:

Steve Mower +1 240-520-5906

Jennifer Dingbaum +1 320-250-2412

### Welcome Super Petrone-ET

69207641 \*TR \*TV \*TL \*TD

PTA +1416M +66F +36P 75%R 12/11

PTA +8.7PL +928NM\$ 2.52SCS +3.3DPR

PTA +2.43T +2.64UDC +1.53FLC 71%R

GTPI +2459G

### Coyne-Farms Observer Yem-ET

69463805

Born: December 24, 2010

GTPI+2214 +1667M +67F +56P +3.19T

### Sisters to Shottle Yeah

**Coyne-Farms Shottle Yup-ET VG 87 DOM**

1-11 3x 365d 34520 3.7 1291 3.1 1083

**Coyne-Farms Shottle Yes-ET VG-85**

3-07 3x 365d 28200 3.4 949 3.0 833

**Coyne-Farms Finley Yarn-ET VG-88**

3-10 3x 365d 37540 3.3 1243 3.4 1289

**Coyne-Farms Marshall Yak-ET EX-90**

3-03 3x 365d 42930 3.7 1576 3.2 1353

**Coyne-Farms Marshall Yaz-ET VG-86**

1-11 3x 316d 28744 3.7 1059 2.7 778

**Coyne-Farms Yasmine CRI-ET VG-86**

2-10 2x 305d 35930 3.6 1294 2.9 1025

**Coyne-Farms Yelena-CRI-ET VG-86**

1-11 3x 365d 36930 3.6 1336 3.1 1129

### Charlesdale Superstition-ET

62065919 \*TV \*TL

PTA +1731M +32F +52P 93%R 12/11

PTA +2.06T +2.02UDC +.72FLC

GTPI +2201G

### Welcome Baxter Petunia

840003004008006 Very Good-85-2YR

### De-Su Observer-ET

65917481 \*TR \*TV \*TL \*TD

PTA +1465M +58F +47P 78%R 12/11

PTA +2.74T +2.82UDC +.63FLC 74%R

GTPI +2342G

### Coyne-Farms Shottle Yeah-ET

62053807 Very Good-88 EX-MS DOM

GTPI+2034 +1059M +45F +45P +3.05T

2-03 3x 365d 32830 3.9 1288 3.3 1084

• Sons in AI and embryos exported

### 3rd thru 11th Dams

**Milkworth Manfred Yadda**

VG-86 GMD DOM

1-11 3x 365d 35730 4.0 1435 3.2 1160

**Milkworth Megabuck Yen GP-83 VG-MS**

2-11 2x 305d 25380 4.0 1020 3.0 762

**Milkworth Blackstar Nach-ET**

GP-81 VG-MS

3-04 2x 365d 34690 3.3 1130 2.8 984

**Foxworth Secret Naples-ET**

VG-86 GMD DOM

2-01 2x 365d 27370 3.2 880 3.0 834

**Foxworth Tradition Nicolena VG-87 DOM**

9-01 2x 365d 33640 3.6 1197 2.8 949

Life: 2328d 189660 3.3 6300 2.9 5487

**Ransom-Rail Nicolette VG-86 GMD DOM**

6-06 2x 365d 32830 3.6 1192 2.9 956

Life: 1850d 129760 3.7 4785 3.1 4018

**Ransom-Rail Nicki Combination**

EX-90 GMD DOM

5-08 2x 365d 35390 3.5 1239

Life: 2829d 207930 3.5 7267

**Ransom-Rail Celeste Nicholas VG-88 GMD**

10-1 2x 308d 22200 4.2 932

Life: 3514d 209340 3.9 8232

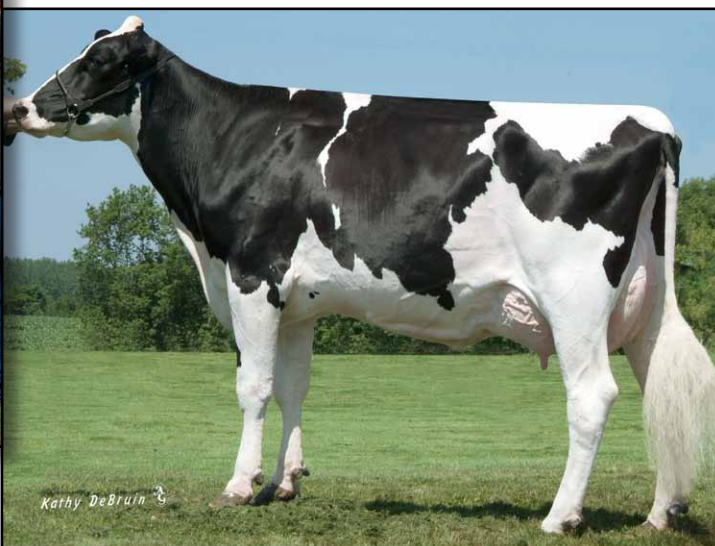
**Ransom-Rail Pilot Ursula VG-86 GMD**

9-07 2x 305d 23530 4.0 939

Life: 2849d 171200 3.9 6723



**OAKFIELD ENCINO BRITLEY-ET EX-90 EX-MS DOM**  
**2ND DAM OF LOT 14**



**OAKFIELD OUTSIDE BRYNN EX-92 2E DOM**  
**3RD DAM OF LOT 14**



**FIVE #1 EMBRYOS**

• *Worldwide Export Available*

**Holstein Plaza Contacts:**

Steve Mower +1 240-520-5906

Jennifer Dingbaum +1 320-250-2412

**Mountfield SSI Dcy Mogul-ET**

840M003006972816 \*TR \*TV \*TL \*TY \*TD  
PTA +1469M +87F +52P 77%R 12/11  
PTA +6.9PL +897NM\$ 2.67SCS +0.0DPR  
PTA +3.55T +3.80UDC +3.23FLC 73%R  
GTPI +2552G

**Oakfield Observer Buffy-ET**

840003006989324 Born: December 2, 2010  
GTPI+2168 +917M +53F +41P +2.70T

**Coyne-Farms Dorcy-ET**

139005002 \*BY \*TV \*TL  
PTA +1344M +46F +38P 78%R 12/11  
PTA +3.23T +3.62UDC +2.67FLC  
GTPI +2284G

**Mountfield Marsh Maxine-ET**

62784081 Very Good-88 EX-MS DOM  
2-03 2x 159d 14324 4.3 611 3.2 454

**De-Su Observer-ET**

65917481 \*TR \*TV \*TL \*TD  
PTA +1465M +58F +47P 78%R 12/11  
PTA +2.74T +2.82UDC +.63FLC 74%R  
GTPI +2342G

**Oakfield Encino Britley-ET**

840003000942909 EX-90 EX-MS DOM  
GTPI+2021 +167M +45F +17P +2.16T  
2-02 3x 305d 23650 4.2 1005 3.4 795

**3rd thru 10th Dams**

**Oakfield Outside Brynn** EX-92 2E DOM  
5-09 2x 365d 35420 4.3 1506 3.4 1215  
Life: 1251d 107480 4.1 4375 3.5 3713  
**Oakfield Storm Bailey** EX-92 2E EX-MS  
6-00 2x 365d 26030 4.6 1205 3.4 897  
**Bubbling-Brook J Quiet** EX-91  
3-04 3x 305d 33100 3.5 1158 3.0 1001  
Life: 1945d 165620 3.7 6207 3.2 5279  
**Bubbling-Brook J Ouch** VG-87  
6-02 2x 305d 30710 3.8 1164 3.1 949  
Life: 1756d 139350 3.7 5140 3.2 4473  
**Bubbling-Brook J Mitzi** G-79  
2-00 2x 308d 17950 3.6 653 3.2 570  
**Bubbling-Brook J Kay**-ET VG-85  
7-03 2x 326d 34220 4.2 1445 3.0 1012  
Life: 1818d 163950 4.1 6683 3.1 5006  
**Bubbling-Brook Enhancer Dandy**  
EX-93 3E EX-MS GMD DOM  
6-06 2x 365d 31260 3.7 1169 2.9 906  
Life: 2468d 165320 3.8 6329 3.1 5051  
**Babbling-Brook Cavalier Yarn**  
EX-91 GMD DOM  
8-09 2x 365d 29850 3.9 1167 3.2 952  
Life: 2574d 178020 3.8 6758 3.2 5674



**MS WRAGGES BOLTON ASTRID-ET VG-86-2YR VVVVV**  
**DAM OF LOT 15**

**15**

**FOUR #1 EMBRYOS**

• Domestic Shipment Only

**Holstein Plaza Contacts:**

Steve Mower +1 240-520-5906  
Jennifer Dingbaum +1 320-250-2412

**Amighetti Numero Uno-ET**

17990915143 \*TV \*TL \*TY  
PTA +1170M +95F +52P 80%R 12/11  
PTA +986NM\$ +8.2PL 2.59SCS 7%DCE  
PTA +3.37T +3.00UDC +2.42FLC 76%R  
GTPI +2621G

**Ms Wrages Bolton Astrid-ET**

65735184 Very Good-86 VVVVV @ 2-11  
GTPI+1917 +1655M +28F +32P +2.89T  
2-02 2x 308d 26348 3.1 824 3.0 784 inc.  
• Shamrock son GTPI+2310 +2371M +63P

**Long-Langs Oman Oman-ET**

135746776 VG-85 GM 1/10 \*TV \*TL  
PTA +1277M +70F +67P 94%R 12/11  
PTA +1.83T +1.40UDC +2.00FLC  
GTPI +2206G

**Amighetti Shottle Ave-ET**

ITA 17990346074 VG-88-2YR-ITA  
2-00 2x 338d 30851 4.1 1274 3.5 1089

**Sandy-Valley Bolton-ET**

131823833 Excellent-90 GM 8/10 \*TV \*TL  
PTA +1945M +70F +51P 99%R 12/11  
PTA +2.77T +2.63UDC +2.25FLC  
GTPI +2010G

**Groves-Vu Shottle Amelia-ET**

62131455 Very Good-88  
2-06 2x 305d 23740 3.5 824 2.7 630

**4th thru 9th Dams**

**Ban-View Blackstar Annie-TW**

EX-92 3E DOM  
7-06 2x 365d 27830 3.3 928 2.9 794  
Life: 2358d 165020 3.4 5662 2.8 4649

**Ban-View Mars Annette EX-92 3E DOM**

8-11 2x 365d 28350 3.7 1049 2.8 795  
Life: 3129d 201980 3.5 7047 2.9 5822

**Ban-View Bell Annie GP-83 DOM**

4-05 2x 316d 20170 4.6 924 2.8 549

**Ban-View Marvex Anita VG-87**

4-03 2x 352d 22680 3.9 881

**Ban-View Astronaut Angel EX-90**

3-11 2x 365d 22760 3.9 887

**Ban-View Black Eagle Annie EX-90**

2-04 2x 305d 19340 3.2 613

**Picston Shottle-ET**

598172GBR EX-95-GBR GM 8/08 \*TV \*TL  
PTA +1211M +58F +34P 99%R 12/11  
PTA +2.87T +2.11UDC +1.90FLC  
GTPI +2039G

**Ban-View Marshall Ann-ET**

132320810 Excellent-91 EX-MS  
4-06 2x 365d 37360 3.6 1336 2.9 1065  
2-04 2x 365d 28580 3.6 1037 2.8 805



**REGANCREST TS BRITNEE-ET EX-91 EX-MS**  
DAM OF LOT 16



**REGANCREST-PR BARBIE-ET EX-92 GMD DOM**  
2ND DAM OF LOT 16



**TWO #1 and ONE #2 EMBRYOS**

• Domestic Shipment Only

**Holstein Plaza Contacts:**

Steve Mower +1 240-520-5906

Jennifer Dingbaum +1 320-250-2412

**Toc-Farm Goldsun-ET**

59330032335ITA \*TV \*TL

PTA -397M -2F +4P 83%R 12/11

PTA +2.3PL 2.77SCS -.2DPR 7%DCE

PTA +3.83T +4.22UDC +2.27FLC 73%R

GTPI +1905G

**Regancrest TS Britnee-ET**

63606489 Excellent-91 EX-MS

GTPI+1793 +429M +15F +17P +2.83T

4-02 2x 314d 33055 3.5 1170 3.1 1034

2-05 2x 365d 30170 3.4 1024 3.3 1008

**Braedale Goldwyn**

10705608C GP-CAN EX'05 GM 8/08 \*TV \*TL

PTA +194M +36F +18P 99%R 12/11

PTA +3.09T +2.61UDC +2.70FLC

GTPI +1988G

**Toc-Farm Allen Amyly**

ITA53000628285 Excellent-95 2E

7-00 2x 305d 33570 5.4 1819 3.6 1206

• All-World Cow 2008

**Jenny-Lou Mrshl Toystory-ET**

60372887 \*TR \*TV \*TL

PTA +1047M +37F +32P 99%R 12/11

PTA +2.17T +2.09UDC +1.44FLC

GTPI +1859G

**Regancrest-PR Barbie-ET**

60602011 Excellent-92 GMD DOM

2-06 2x 365d 31690 3.9 1237 3.1 990

• HM All-American Junior 3-Yr Old 2004

• Former #1 Type Cow

**3rd thru 8th Dams**

**Regancrest Juror Brina-ET EX-92 GMD**

4-04 2x 365d 40640 3.6 1478 2.8 1140

• Member Nom AA Best 3 Females 2000

• Res Grand Champ Iowa State Show 2000

**Regancrest Acrostar Bert-ET**

EX-90 GMD DOM

5-02 2x 365d 37790 3.6 1357 3.0 1143

Life: 1305d 109350 3.7 4031 3.1 3350

**Regancrest Mark Chairman Bea**

EX-91 2E GMD

7-09 2x 365d 33630 3.8 1276 2.9 988

Life: 2036d 140130 4.1 5711 3.1 4350

**Regancrest Board Chairman Bea EX-90**

5-09 2x 365d 26010 4.1 1059 3.2 835

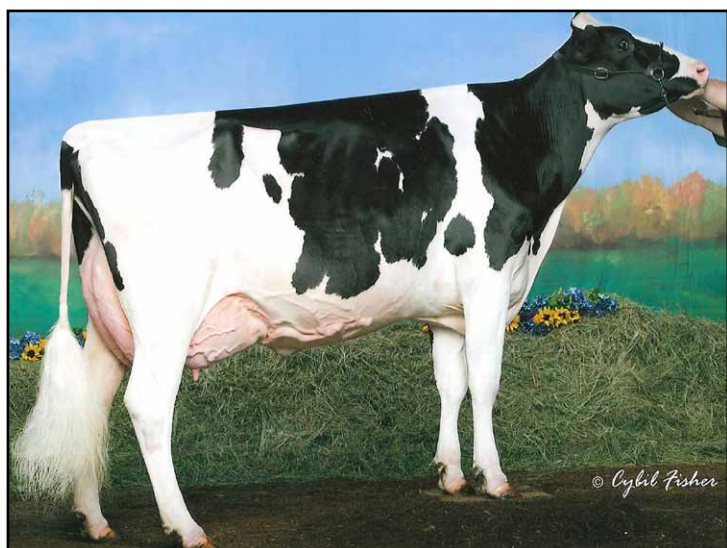
**Regancrest Apache Standout Bea VG-86**

4-10 2x 320d 19070 4.0 766

Life: 2432d 131940 3.6 4744

**Regancrest Standout Bertrand VG-85**

4-01 2x 355d 17460 3.3 571



**VT-POND-VIEW GOLD LEVI-ET EX-93 95-MS**  
**DAM OF LOT 17**



**VT-POND-VIEW JASP LILAC-ET VG-89-2YR**  
**MATERNAL SISTER TO LOT 17**



**FIVE #1 EMBRYOS**

• *Worldwide Export Available*

**Holstein Plaza Contacts:**

Steve Mower +1 240-520-5906  
Jennifer Dingbaum +1 320-250-2412

**Glen-Toctin Super Large-ET**

140761397 \*TV \*TL \*TY  
PTA +1627M +44F +52P 78%R 12/11  
PTA +6.5PL +705NM\$ 2.69SCS +1.0DPR  
PTA +3.89T +3.23UDC +2.73FLC 74%R  
GTPI +2423G

**VT-Pond-View Gold Levi-ET**

138265933 Excellent-93 95-MS @ 4-07  
4-09 3x 82d 8565 4.7 404 inc.  
3-08 3x 319d 27100 4.8 1310 3.3 900  
2-05 3x 342d 21560 4.9 1056 3.7 798

*Maternal sister to Gold Levi*

**VT-Pond-View Dur Layla-ET EX-91**

*dam of: VT-Pond-View Gwyn Libby*  
• *Junior Champion, Royal Winter Fair 2011*

**Charlesdale Superstition-ET**

62065919 \*TV \*TL  
PTA +1731M +32F +52P 93%R 12/11  
PTA +2.06T +2.02UDC +.72FLC  
GTPI +2201G

**Glen-Toctin Shottle Liva-ET**

137242018 Excellent-91  
3-00 2x 365d 41140 4.4 1810 3.1 1265

**Braedale Goldwyn**

10705608C GP-CAN GM 8/11 \*TV \*TL  
PTA +211M +38F +19P 99%R 8/11  
PTA +3.13T +2.63UDC +2.73FLC  
GTPI +2001G

**Twin-Wind-TC Broker Lass-ET**

15342656 Excellent-95 EEEEE 4E  
8-01 2x 365d 33390 4.5 1495 3.2 1073  
11-2 2x 365d 30490 4.3 1316 3.3 1014  
Life: 3712d 254410 5.0 12659 3.6 9192  
• *Reserve Grand Champ, North-E Fall Nat'l*  
• *1st Jr 2-Yr-Old, North-E Fall Nat'l*  
• *2nd 125,000 lb. Cow, Mid-E Fall Nat'l*

*Maternal sister to Lot 17*

**VT-Pond-View Jasp Lilac-ET VG-89-2YR**

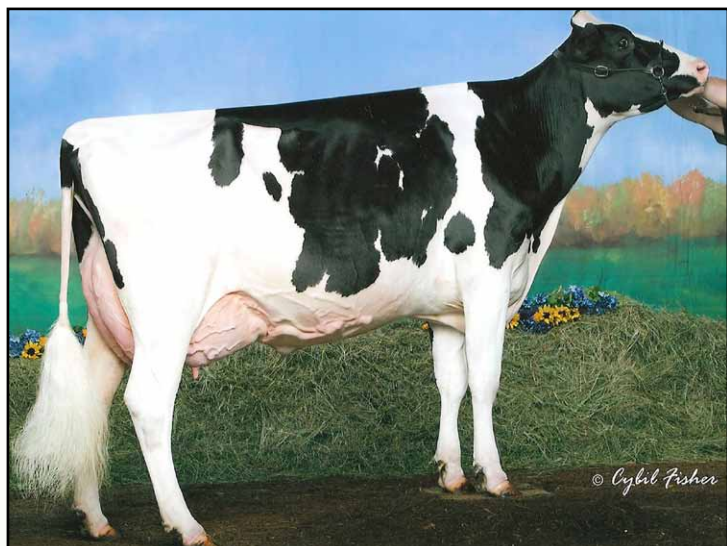
• *Nominated All-American Produce 2010*

**3rd & 4th Dams**

**C Grossville Ultimate Libby EX-92**  
5-06 2x 365d 27230 4.1 1103 3.1 834  
• *All-American Spring Yrlg Heifer 1991*  
• *All-American Spring Heifer Calf 1990*  
• *1st Spring Yrlg Eastern National 1991*  
• *1st Spring Yrlg International Show 1991*

**Grossville Freddy Lynn VG-CAN**

3-06 2x 299d 17046 3.9 668



**VT-POND-VIEW GOLD LEVI-ET EX-93 95-MS**  
**DAM OF LOT 18**



**VT-POND-VIEW JASP LILAC-ET VG-89-2YR**  
**MATERNAL SISTER TO LOT 18**

**18**

**Holstein Plaza Contacts:**

Steve Mower +1 240-520-5906  
Jennifer Dingbaum +1 320-250-2412

**Erbacres Damion**

130263722 EX-96 \*TR \*TV \*TL \*TY \*TD  
PTA -507M -58F +1P 99%R 12/11  
PTA +3.17T +2.20UDC +3.17FLC  
GTPI +1549G

**VT-Pond-View Gold Levi-ET**

138265933 Excellent-93 95-MS @ 4-07  
4-09 3x 82d 8565 4.7 404 inc.  
3-08 3x 319d 27100 4.8 1310 3.3 900  
2-05 3x 342d 21560 4.9 1056 3.7 798

*Maternal sister to Gold Levi*

**VT-Pond-View Dur Layla-ET EX-91**

*dam of: VT-Pond-View Gwyn Libby*  
• Junior Champion, Royal Winter Fair 2011

**FIVE #1 EMBRYOS**

• Worldwide Export Available

**Regancrest Elton Durham-ET**

2250783 EX-90 GM 8/01 \*TR \*CV \*TL  
PTA -224M -32F +7P 99%R 12/11  
PTA +2.48T +2.31UDC +2.21FLC  
GTPI +1602G

**Regancrest Encore Dalhia-ET**

124287356 Very Good-89  
2-01 2x 365d 29250 3.3 971 3.3 968

**Braedale Goldwyn**

10705608C GP-CAN GM 8/11 \*TV \*TL  
PTA +211M +38F +19P 99%R 8/11  
PTA +3.13T +2.63UDC +2.73FLC  
GTPI +2001G

**Twin-Wind-TC Broker Lass-ET**

15342656 Excellent-95 EEEEE 4E  
8-01 2x 365d 33390 4.5 1495 3.2 1073  
11-2 2x 365d 30490 4.3 1316 3.3 1014  
Life: 3712d 254410 5.0 12659 3.6 9192  
• Reserve Grand Champ, North-E Fall Nat'l  
• 1st Jr 2-Yr-Old, North-E Fall Nat'l  
• 2nd 125,000 lb. Cow, Mid-E Fall Nat'l

*Maternal sister to Lot 18*

**VT-Pond-View Jasp Lilac-ET VG-89-2YR**

• Nominated All-American Produce 2010

**3rd & 4th Dams**

**C Grossville Ultimate Libby EX-92**  
5-06 2x 365d 27230 4.1 1103 3.1 834  
• All-American Spring Yrlg Heifer 1991  
• All-American Spring Heifer Calf 1990  
• 1st Spring Yrlg Eastern National 1991  
• 1st Spring Yrlg International Show 1991

**Grossville Freddy Lynn VG-CAN**

3-06 2x 299d 17046 3.9 668



**RALMA MAC BEAUTY-ET VG-87-2YR DOM**  
**DAM OF LOT 19**

**19****Holstein Plaza Contacts:**

Steve Mower +1 240-520-5906

Jennifer Dingbaum +1 320-250-2412

**Gillette Windhammer**

8932157C EX-95 EXTRA'11 \*TV \*TL

PTA +297M +56F +10P 87%R 12/11

PTA +2.95T +2.67UDC +2.49FLC 81%R

GTPI +1693G / GLPI+2290 Conf+19

**Ralma Mac Beauty-ET**

53478809 Very Good-87-2YR VVVVV DOM

GTPI+2022 +734M +21F +19P+ 3.10T

2-05 2x 365d 29790 4.1 1213 3.2 953

• Daughter by Man-O-Man GTPI+2285

**FIVE #1 EMBRYOS**

• Worldwide Export Available

**Sandy-Valley Bolton-ET**

131823833 Excellent-90 GM 8/10 \*TV \*TL

PTA +1945M +70F +51P 99%R 12/11

PTA +2.77T +2.63UDC +2.25FLC

GTPI +2010G

**Gillette Blitz 2nd Wind-ET**

7352248C Very Good-88-CAN 34\*

2-02 3x 365d 39096 3.6 1422 3.0 1182

**Regancrest-HHF Mac-ET**

60540164 Excellent-92 GM 8/09 \*TV \*TL

PTA +205M +12F +5P 99%R 12/11

PTA +2.02T +2.40UDC +1.41FLC

GTPI +1847G

**Ralma Shottle Butterfly-ET**

52774516 Very Good-88 EEVVV

3-09 2x 365d 32030 4.3 1364 3.2 1039

2-02 2x 365d 29560 4.5 1318 3.2 952

**4th thru 6th Dams****Ralma Durham Fireball-ET**

EX-92 EX-MS GMD DOM

2-05 2x 365d 33800 4.0 1364 3.4 1139

Full sister to Fireball

**Ralma Christmas Fudge VG-88 GMD DOM**

2-03 2x 365d 31810 4.1 1292 3.2 1027

• Global Cow of the Year 2011

**Ralma Juror Faith EX-91 GMD DOM**

4-02 2x 365d 47860 4.5 2165 3.1 1497

Life: 1352d 133520 4.5 5986 3.3 4358

• Sons in AI

• Numerous VG &amp; EX daughters

**Ralma Leadman Fashion VG-89 VG-MS**

4-10 2x 365d 40710 3.7 1494 3.0 1232

Life: 1243d 117710 3.6 4295 3.2 3743

**Picston Shottle-ET**

598172GBR EX-95-GBR GM 8/08 \*TV \*TL

PTA +1211M +58F +34P 99%R 12/11

PTA +2.87T +2.11UDC +1.90FLC

GTPI +2039G

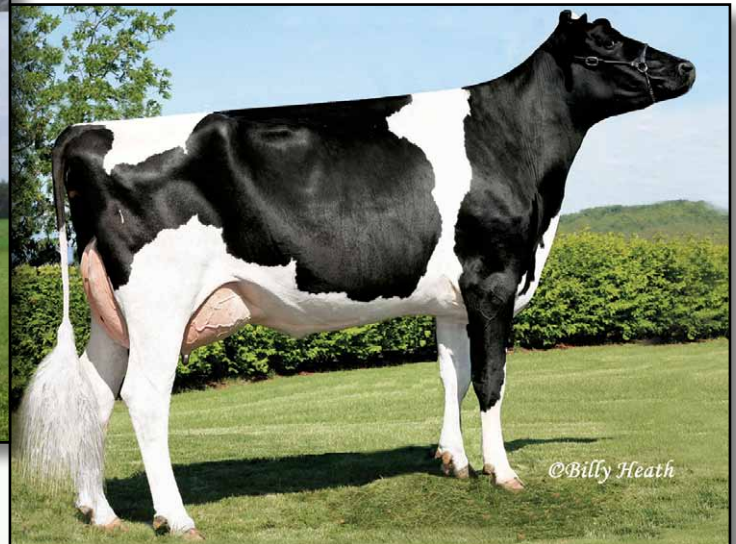
**Ralma Finley Firefly-ET**

52357902 Excellent-91 EX-MS GMD

2-03 2x 365d 32760 4.1 1349 3.3 1072



**ENJOYABLE ZENA-ET EX-90 EX-MS @ 3-11  
DAM OF LOT 20**



**BUDJON-JK GIBSON ENJOY-ET EX-93 EEEEE  
2ND DAM OF LOT 20**



**FIVE #1 EMBRYOS**

• *Worldwide Export Available*

**Holstein Plaza Contacts:**

Steve Mower +1 240-520-5906  
Jennifer Dingbaum +1 320-250-2412

**Siemers Toys Hero 9701-ET**

62663985 Excellent-92 \*TR \*TV \*TL \*TY \*TD  
PTA -128M +50F +5P 92%R 12/11  
PTA +2.9PL 2.94SCS +.8DPR 7%DCE  
PTA +3.70T +3.84UDC +2.53FLC 89%R  
GTPI +2057G

**Enjoyable Zena-ET**

138743884 Excellent-90 EX-MS @ 3-11  
3-07 2x 278d 25007 3.7 923 3.1 784 inc.  
2-04 3x 365d 30420 3.9 1187 3.3 996

**Jenny-Lou Mrshl Toystory-ET**

60372887 \*TR \*TV \*TL  
PTA +1047M +37F +32P 99%R 12/11  
PTA +2.17T +2.09UDC +1.44FLC  
GTPI +1859G

**Siemers Durham Hast 4358-ET**

60404488 Excellent-91 GMD \*TV  
2-10 3x 365d 46270 4.4 2017 3.4 1583

**Ocean-View Zenith-TW-ET**

12980008 GM 8/08 \*TR \*TV \*TL \*TD  
PTA -163M +11F +5P 99%R 12/11  
PTA +1.31T +1.61UDC -.46FLC  
GTPI +1691G

**Budjon-JK Gibson Enjoy-ET**

135104754 Excellent-93 EEEEE  
5-06 2x 365d 27360 4.3 1183 3.6 991  
4-00 2x 365d 21010 4.2 887 3.4 719  
2-04 2x 365d 18600 4.4 826 3.5 659

**3rd thru 8th Dams**

**Budjon-JK Linjet Eileen-ET**

EX-96 2E DOM  
5-06 2x 365d 44703 3.7 1647 3.3 1467  
• *Res All-American Aged Cow 2005*  
• *All-American 5-Yr-Old Cow 2004*

**Krull Broker Elegance**

EX-96 3E GMD DOM  
5-07 2x 365d 40950 3.7 1522 3.1 1272  
Life: 2356d 183710 3.7 6878 3.2 5919  
• *HM All-American Aged Cow 1999*  
• *HM All-Canadian Mature Cow 1999*  
• *1st International 125,000 lb Cow 2000*  
• *2nd Mid-W Spr Nat 4Y Cow 1997*

**Krull Starbuck Excellency**

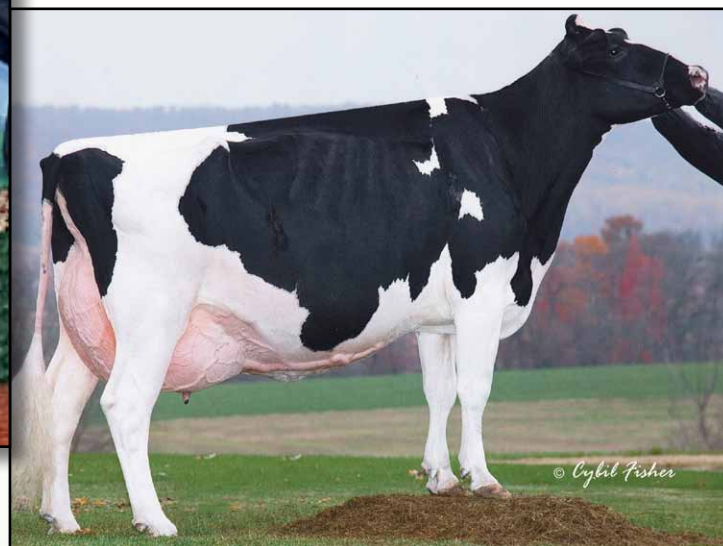
EX-90 GMD DOM  
3-03 2x 365d 27140 3.5 937 3.4 930  
**Krull TT Excellency** EX-90 VEEE DOM  
3-02 2x 363d 24319 3.5 862 3.4 829  
Life: 1733d 109780 3.7 4077 3.3 3605

**Krull Boot Mark Excellency** EX-92 2E GMD

6-06 2x 365d 27410 3.8 1040 3.1 868  
Life: 3026d 201440 3.5 7105 3.0 4634  
**Krull Kingstead Excellency** EX-92 4E GMD  
12-4 2x 323d 21920 3.5 772  
Life: 3364d 179790 3.6 6436



**MS DURCHAN ELITE-ET EX-91-3YR**  
**2ND DAM OF LOT 21**



**COLDSPRINGS DUR CHAN 109-ET EX-95 2E DOM**  
**3RD DAM OF LOT 21**



**FIVE #1 EMBRYOS**

• *Worldwide Export Available*

**Holstein Plaza Contacts:**

Steve Mower +1 240-520-5906  
Jennifer Dingbaum +1 320-250-2412

**Braedale Goldwyn**

10705608C GP-CAN EX'05 GM 8/08 \*TV \*TL  
PTA +194M +36F +18P 99%R 12/11  
PTA +3.09T +2.61UDC +2.70FLC  
GTPI +1988G

**Durchan Shottle Elyanna-ET**

66499603 Very Good-85-3YR-CAN  
2-09 2x 105d 8274 3.9 320 3.2 267 inc.

*Full sister to Elite*

**Ms Durchan Lady Allana-ET EX-95 EEEEE**

3-07 2x 365d 40850 4.4 1793 3.1 1272  
• *All-American Milking Yearling 2007*  
• *Int Champion Eastern Fall/Nat 2009*

**Shoremar James**

5902195C GP-81-CAN GM 2/04 \*TV \*TL  
PTA -589M +8F +6P 99%R 8/11  
PTA +.70T +.60UDC +.25FLC  
GTPI +1257G

**Braedale Baler Twine**

6860888C Very Good-86-CAN 29\*  
2-01 2x 365d 30906 4.9 1521 3.4 1052  
Life: 1672d 133470 4.3 5798 3.6 4815

**Picston Shottle-ET**

598172GBR EX-95-GBR GM 8/08 \*TV \*TL  
PTA +1211M +58F +34P 99%R 12/11  
PTA +2.87T +2.11UDC +1.90FLC  
GTPI +2039G

**Ms Durchan Elite-ET**

138959410 Excellent-91-3YR  
2-06 2x 290d 22810 4.1 945 3.1 713  
• *1st Sr 2-Yr-Old, Eastern Fall Nat'l 2009*

**3rd thru 11th Dams**

**Coldsprings Dur Chan 109-ET**  
EX-95 2E DOM

6-04 2x 365d 41850 4.3 1784 3.1 1292  
Life: 1423d 130510 3.6 4695 3.1 4087  
• *Res All-American Aged Cow 2007*  
• *HM All-American 5-Year-Old 2005*  
• *All-American 4-Year-Old 2004*

**C Bermaska Starbuck Chancel**  
VG-89 DOM

2-07 2x 365d 28400 4.3 1230 3.5 999  
• *All-American Senior 2-Year-Old 1992*  
• *All-American Senior Yearling Heifer 1991*

**Donaco Enhancer Cheryl VG-87-CAN**  
7-02 2x 305d 21462 4.8 1021 3.5 743

**Danaco Apache Chanda VG-86**  
4-11 2x 322d 19160 4.3 829 3.5 670

**Danaco Elevation Candace VG-86**  
Life: 2564d 185599 3.7 6834

**Davis-Farm Maple Cindy EX-90 GMD**  
5-03 2x 365d 23849 3.7 871

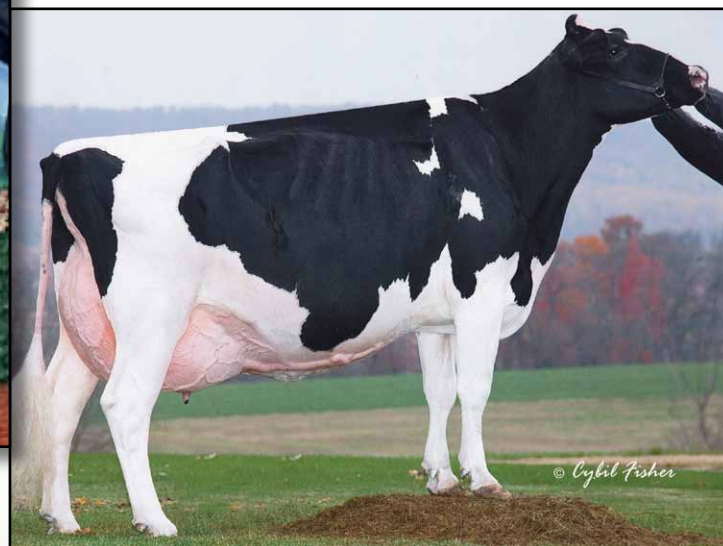
**Davis-Farm Heritage Candace EX-90 EEEV**  
2-06 2x 305d 12060 3.7 445

**Davis-Farm Model Lena VG-85**  
4-02 2x 305d 14060 4.1 582

**Maview Candace Pilot EX-91 VEEV**  
Life: 3139d 151504 3.9 5825



**MS DURCHAN ELITE-ET EX-91-3YR**  
2ND DAM OF LOT 22



**COLDSPRINGS DUR CHAN 109-ET EX-95 2E DOM**  
3RD DAM OF LOT 22



## FIVE #1 EMBRYOS

- Worldwide Export Available

### Holstein Plaza Contacts:

Steve Mower +1 240-520-5906  
Jennifer Dingbaum +1 320-250-2412

### Maple-Downs-I G W Atwood-ET

8956379C Very Good-87 \*TV \*TL  
PTA +484M +51F +22P 79%R 12/11  
PTA +4.21T +3.34UDC +3.75FLC 76%R  
GTPI +2031G

### Durchan Shottle Elyanna-ET

66499603 Very Good-85-3YR-CAN  
2-09 2x 105d 8274 3.9 320 3.2 267 inc.

Full sister to Elite

### Ms Durchan Lady Allana-ET EX-95 EEEEE

3-07 2x 365d 40850 4.4 1793 3.1 1272  
• All-American Milking Yearling 2007  
• Int Champion Eastern Fall/Nat 2009

### Braedale Goldwyn

10705608C GP-CAN EX'05 GM 8/08 \*TV \*TL  
PTA +194M +36F +18P 99%R 12/11  
PTA +3.09T +2.61UDC +2.70FLC  
GTPI +1988G

### MD-Delight Durham Atlee-ET

131704103 Excellent-92 EEEEE DOM  
3-11 2x 365d 38290 5.5 2091 3.1 1177  
• All-American Senior 3-Year-Old 2005

### Picston Shottle-ET

598172GBR EX-95-GBR GM 8/08 \*TV \*TL  
PTA +1211M +58F +34P 99%R 12/11  
PTA +2.87T +2.11UDC +1.90FLC  
GTPI +2039G

### Ms Durchan Elite-ET

138959410 Excellent-91-3YR  
2-06 2x 290d 22810 4.1 945 3.1 713  
• 1st Sr 2-Yr-Old, Eastern Fall Nat'l 2009

### 3rd thru 11th Dams

#### Coldsprings Dur Chan 109-ET

EX-95 2E DOM  
6-04 2x 365d 41850 4.3 1784 3.1 1292  
Life: 1423d 130510 3.6 4695 3.1 4087  
• Res All-American Aged Cow 2007  
• HM All-American 5-Year-Old 2005  
• All-American 4-Year-Old 2004

#### C Bermaska Starbuck Chancel

VG-89 DOM  
2-07 2x 365d 28400 4.3 1230 3.5 999  
• All-American Senior 2-Year-Old 1992  
• All-American Senior Yearling Heifer 1991

#### Donaco Enhancer Cheryl VG-87-CAN

7-02 2x 305d 21462 4.8 1021 3.5 743

#### Danaco Apache Chanda VG-86

4-11 2x 322d 19160 4.3 829 3.5 670

#### Danaco Elevation Candace VG-86

Life: 2564d 185599 3.7 6834

#### Davis-Farm Maple Cindy EX-90 GMD

5-03 2x 365d 23849 3.7 871

#### Davis-Farm Heritage Candace EX-90 EEEV

2-06 2x 305d 12060 3.7 445

#### Davis-Farm Model Lena VG-85

4-02 2x 305d 14060 4.1 582

#### Maview Candace Pilot EX-91 VEEV

Life: 3139d 151504 3.9 5825



**TRAMILDA-N SUPER EMILY-ET**  
DAM OF LOT 23



**WABASH-WAY EMILYANN-ET VG-88 DOM**  
FULL SISTER TO 2ND DAM OF LOT 23

**23**

**Holstein Plaza Contacts:**

Steve Mower +1 240-520-5906  
Jennifer Dingbaum +1 320-250-2412



**Mr Chassity Gold Chip-ET**

140145553 Excellent-90 \*TR \*TV \*TL \*TD  
PTA +1034M +48F +26P 78%R 12/11  
PTA +4.8PL 2.47SCS -.4DPR  
PTA +4.23T +3.19UDC +3.47FLC 75%R  
GTPI +2279G

**Tramilda-N Super Emily-ET**

141022028 Born: December 8, 2010  
GTPI+1969 +1241M +29F +32P +2.08T

Full sisters to Shottle Elly

**Wabash-Way Emilyann-ET**

VG-88 DOM • GTPI+2150  
2-01 2x 365d 38610 3.9 1497 3.4 1324  
• Former #1 GTPI/GLPI Cow of the Breed

**Wabash-Way Evett-ET**

VG-86-2YR-CAN • GTPI+2051  
2-02 2x 365d 34187 4.9 1660 3.3 1111

## TWO #1 EMBRYOS

• Worldwide Export Available

**Braedale Goldwyn**

10705608C GP-CAN EX'05 GM 8/08 \*TV \*TL  
PTA +194M +36F +18P 99%R 12/11  
PTA +3.09T +2.61UDC +2.70FLC  
GTPI +1988G

**Regancrest S Chassity-ET**

62496899 Excellent-92 DOM  
3-10 2x 365d 42280 4.3 1798 2.7 1150

**Charlesdale Superstition-ET**

62065919 \*TV \*TL  
PTA +1731M +32F +52P 93%R 12/11  
PTA +2.06T +2.02UDC +.72FLC  
GTPI +2201G

**Wabash-Way Shottle Elly-ET**

66306549 Very Good-85 @ 2-09  
GTPI+1953 +1086M +46F +34P +2.55T  
2-06 2x 298d 22331 3.9 864 3.2 722 inc.  
• Due again June 2012 and looks great!

**3rd thru 12th Dams**

**Crockett-Acres Elita-ET VG-87 GMD DOM**

2-02 2x 365d 39010 3.8 1480 3.5 1383

**Crockett -Acres Mtot Elly-ET**

EX-90 EX-MS GMD DOM

6-04 2x 283d 38840 3.3 1286 3.4 1302

**Wauregan Rudolph Ellymae-ET EX-90**

4-06 3x 365d 40210 3.6 1455 3.4 1375

**Whittier-Farms Lead Mae-ET**

EX-95 3E GMD

8-07 3x 357d 41270 4.8 1962 3.5 1440

Life: 1613d 126960 4.3 5473 3.6 4597

**Raymau Bstar Monica-ET VG-89 DOM**

2-01 2x 146d 12280 3.8 471 3.3 405

**Juniper Jason Maria VG-87 EX-MS DOM**

2-03 2x 365d 20260 4.3 868 3.6 736

**JDM-Pride Valiant Maggie**

EX-91 GMD DOM

6-00 2x 365d 35540 4.1 1441 3.3 1186

Life: 1666d 119120 4.2 5002 3.6 4281

**La-Ko-Land Penstate Sadie**

VG-87 GMD DOM

8-03 2x 336d 24420 3.3 818 3.2 781

Life: 2480d 166909 3.5 5732 3.2 2854

**La-Ko-Land Bootmaker Sally VG-86**

5-10 2x 365d 24450 4.1 1010

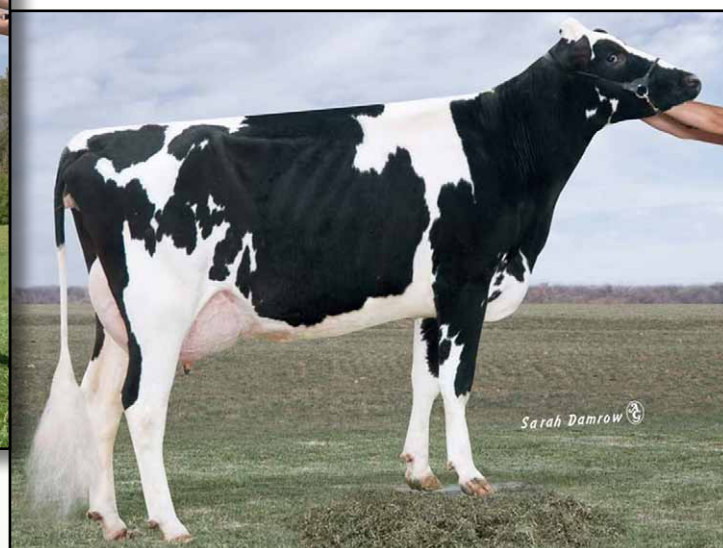
**La-Ko-Land Monitor Nancy EX-90**

10-11 3x 320d 19670 3.1 619

Life: 2381d 145490 3.0 4442



**KERIEL BOWSER BROOKE-ET**  
DAM OF LOT 24



**KERIEL SOCRATES BELLA-ET GP-83 VG-MS @ 2-04**  
2ND DAM OF LOT 24

**24**

**FIVE #1 EMBRYOS**

• Domestic Shipment Only

**Holstein Plaza Contacts:**

Steve Mower +1 240-520-5906

Jennifer Dingbaum +1 320-250-2412

**Welcome Super Petrone-ET**

69207641 \*TR \*TV \*TL \*TD

PTA +1416M +66F +36P 75%R 12/11

PTA +8.7PL +928NM\$ 2.52SCS +3.3DPR

PTA +2.43T +2.64UDC +1.53FLC 71%R

GTPI +2459G

**Keriel Bowser Brooke-ET 99%RHA-I**

140923504 Born: September 27, 2010

GTPI+2140 +1205M +32F +40P +1.58T

**Charlesdale Superstition-ET**

62065919 \*TV \*TL

PTA +1731M +32F +52P 93%R 12/11

PTA +2.06T +2.02UDC +.72FLC

GTPI +2201G

**Welcome Baxter Petunia**

840003004008006 Very Good-85-2YR

**Laeschway Jet Bowser-ET**

64872951 98%RHA-I \*TV \*TL

PTA +928M +25F +38P 77%R 12/11

PTA +2.04T +2.11UDC +1.88FLC 73%R

GTPI +2138G

**Keriel Socrates Bella-ET**

139992487 Good Plus-83 VG-MS @ 2-04

2-02 2x 263d 21358 3.6 766 3.0 642 inc.

**3rd thru 10th Dams**

**Regancrest TS Britnee-ET** EX-91 EX-MS

2-05 2x 365d 30170 3.4 1024 3.3 1008

**Regancrest-PR Barbie-ET**

EX-92 EEEEE GMD DOM

2-06 2x 365d 31690 3.9 1237 3.1 990

• HM All-American Junior 3-Yr Old 2004

• Former #1 Type Cow

**Regancrest Juror Brina-ET** EX-92 GMD

4-04 2x 365d 40640 3.6 1478 2.8 1140

• Member Nom AA Best 3 Females 2000

• Res Grand Champ Iowa State Show 2000

**Regancrest Aerostar Bert-ET**

EX-90 GMD DOM

5-02 2x 365d 37790 3.6 1357 3.0 1143

Life: 1305d 109350 3.7 4031 3.1 3350

**Regancrest Mark Chairman Bea**

EX-91 2E GMD

7-09 2x 365d 33630 3.8 1276 2.9 988

Life: 2036d 140130 4.1 5711 3.1 4350

**Regancrest Board Chairman Bea** EX-90

5-09 2x 365d 26010 4.1 1059 3.2 835

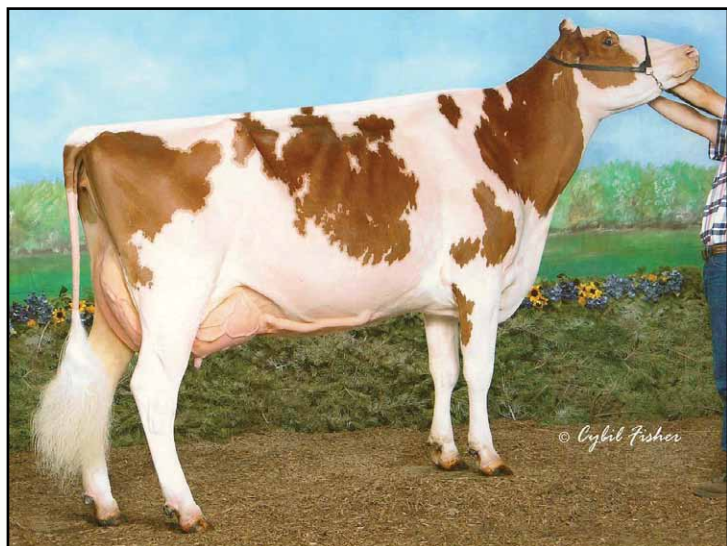
**Regancrest Apache Standout Bea** VG-86

4-10 2x 320d 19070 4.0 766

Life: 2432d 131940 3.6 4744

**Regancrest Standout Bertrand** VG-85

4-01 2x 355d 17460 3.3 571



**GREENLEA AD MAE-RED-ET EX-92 92-MS**  
MATERNAL SISTER TO LOT 25



**GOLDEN-OAKS BANNER RAE-RED EX-90**  
DAM OF LOT 25

# 25

### Holstein Plaza Contacts:

Steve Mower +1 240-520-5906  
Jennifer Dingbaum +1 320-250-2412

### MD-Valleyvue Camden-Red-ET

137077623 \*TV \*TL \*TD  
PTA -332M -22F -12P 90%R 12/11  
PTA +2.06T +1.11UDC +1.79FLC 82%R  
GTPI +1369G

### Golden-Oaks Banner Rae-Red

61690542 Excellent-90 EEEVV  
5-09 2x 365d 35450 5.0 1781 3.4 1213  
2-06 2x 365d 25340 4.4 1107 3.8 967

Maternal sister to Beauty Rae

### Scientific Debutante Rae-ET

EX-92 EEEEE GMD DOM \*RC  
2-02 2x 365d 32930 4.4 1440 3.4 1132

- All-American 4-Year-Old 2005
- Res Grand Champ, World Dairy Expo 2005

## FOUR #1 EMBRYOS

- Domestic Shipment Only

### KHW Kite Advent-Red-ET

133002953 Excellent-94 \*TV \*TL \*TD  
PTA -986M -9F -21P 99%R 12/11  
PTA +2.49T +2.24UDC +1.61FLC  
GTPI +1573G

### MD-Valleyvue Chris-Red-ET

135243228 Excellent-90 EEEVV DOM  
2-02 3x 365d 35600 3.8 1335 3.0 1055

### Markwell Banner-ET \*RC

132219943 \*TV  
PTA -2701M -50F -69P 93%R 12/11  
PTA +.15T +.31UDC -.73FLC 85%R  
GTPI +817G

### Scientific Beauty Rae-ET \*RC

129659965 Excellent-90 VEEVV DOM  
4-03 2x 365d 33710 4.7 1595 3.7 1243  
2-00 2x 365d 26640 4.6 1238 3.6 958

Maternal sister to Lot 25

### Greenlea Ad Mae-Red-ET EX-92 92-MS

3-05 2x 365d 37960 4.0 1526 3.4 1298  
• 2x Nominated All-American  
• 9th 4-Year-Old, World Dairy Expo 2011  
• Supreme Champ, MD State Fair 2011

### 3rd thru 9th Dams

### Scientific Jubilant Rae-ET \*RC EX-90 DOM

5-11 3x 365d 38880 4.1 1608 3.4 1329  
Life: 1394d 117590 4.0 4707 3.4 4018  
• Nine EX and 2 All-American Daughters

### C Hanoverhill Tony Rae

EX-96 3E GMD DOM  
6-11 2x 365d 40220 4.1 1661 3.3 1331  
Life: 2247d 166396 4.1 6904 3.4 5612  
• Grand Champion Western National 1993

### C Hanoverhill TT Roxette-ET EX-94 2E GMD

10-0 3x 365d 35040 4.3 1519 3.0 1063  
Life: 2104d 164789 4.1 6760 3.1 3587

### Mil-R-Mor Roxette EX-CAN 30\*

7-01 2x 365d 24531 4.7 1153  
Life (6 Lacs): 121418 4.7 5728

### C Glenridge Citation Roxy EX-97 4E GMD

10-1 2x 365d 25280 4.2 1060  
Life: 3620d 209784 4.5 9471  
• Queen of the Breed I and II

### C Norton Court Model Vee EX-90

6-06 2x 365d 22483 3.9 875  
Life: 4183d 218629 3.9 8581  
• All-American Produce of Dam 1977, '78, '79

### Norton Court Reflection Vale VG-85-CAN 5\*

8-11 2x 332d 20631 3.7 765  
Life (14 Lacs): 249583 3.7 9295



**JERLAND TALENT GLAMOUR-ET EX-90-3YR**  
DAM OF LOT 26



**JERLAND KITE GLADYS-RED EX-90-3YR**  
2ND DAM OF LOT 26



### Holstein Plaza Contacts:

Steve Mower +1 240-520-5906  
Jennifer Dingbaum +1 320-250-2412

### Scientific Director-Red-ET

138551069 \*TR \*TV \*TL \*TD  
PTA -1046M +9F -9P 85%R 12/11  
PTA +2.51T +2.26UDC +2.45FLC 85%R  
GTPI +1757G

### Jerland Talent Glamour-ET

139257285 Excellent-90 EEEVV @ 3-10  
3-08 2x 211d 18430 3.1 569 3.5 636 inc.  
2-04 2x 354d 25290 3.8 969 3.4 868  
• 10th Generation Excellent Roxy!

## FIVE #1 EMBRYOS

• Worldwide Export Available

### KHW Kite Advent-Red-ET

133002953 Excellent-94 \*TV \*TL \*TD  
PTA -986M -9F -21P 99%R 12/11  
PTA +2.49T +2.24UDC +1.61FLC  
GTPI +1573G

### Scientific Debutante Rae-ET

132416603 Excellent-92 EEEEE \*RC \*CV  
2-02 2x 365d 32930 4.4 1440 3.4 1132  
• All-American 4-Yr-Old Cow 2005

### Ladino Park Talent-Imp-ET

AUS 930377 EX-90 ST\*03 \*RC \*TV \*TL  
PTA -217M -29F +4P 99%R 12/11  
PTA +2.12T +2.34UDC +1.04FLC  
GTPI +1446G

### Jerland Kite Gladys-Red

135562246 Excellent-90 EEVVE @ 3-07  
3-06 2x 365d 27910 3.7 1042 3.2 887  
2-03 2x 305d 21940 3.8 827 3.3 728  
• 2nd Jr 3-Yr-Old, Midwest Spring Nat'l 2007

### 3rd thru 11th Dams

#### Scientific Grace-Red-ET EX-91 EEEEE

5-00 2x 365d 28530 4.4 1260 3.7 1058

• Nom All-American R&W 2007, 2008

#### Scientific Raes Hope-Red-ET EX-92

4-03 2x 365d 36894 3.5 1302 3.2 1171

Life: 1386d 103070 3.5 3655 3.3 3409

#### Scientific Jubilant Rae-ET \*RC EX-90 DOM

5-11 3x 365d 38880 4.1 1608 3.4 1329

Life: 1394d 117590 4.0 4707 3.4 4018

• Nine EX and 2 All-American Daughters

#### C Hanoverhill Tony Rae

EX-96 3E GMD DOM

6-11 2x 365d 40220 4.1 1661 3.3 1331

Life: 2247d 166396 4.1 6904 3.4 5612

• Grand Champion Western National 1993

#### C Hanoverhill TT Roxette-ET

EX-94 2E GMD

10-0 3x 365d 35040 4.3 1519 3.0 1063

Life: 2104d 164789 4.1 6760 3.1 3587

#### Mil-R-Mor Roxette EX-CAN 30\*

7-01 2x 365d 24531 4.7 1153

Life (6 Lacs): 121418 4.7 5728

#### C Glenridge Citation Roxy EX-97 4E GMD

10-1 2x 365d 25280 4.2 1060

Life: 3620d 209784 4.5 9471

• Queen of the Breed I and II

#### C Norton Court Model Vee EX-90

6-06 2x 365d 22483 3.9 875

Life: 4183d 218629 3.9 8581

• All-American Produce of Dam 1977, '78, '79

#### Norton Court Reflection Vale

VG-85-CAN 5\*

8-11 2x 332d 20631 3.7 765

Life (14 Lacs): 249583 3.7 9295



**GLORYLAND LANA RAE EX-94 2E DOM**  
2ND DAM OF LOT 27



**GLORYLAND LAZANDRA RAE-ET EX-90 EX-MS**  
DAM OF LOT 27



### SIX #1 EMBRYOS

- Worldwide Export Available

#### Holstein Plaza Contacts:

Steve Mower +1 240-520-5906

Jennifer Dingbaum +1 320-250-2412



#### Maple-Downs-I G W Atwood-ET

8956379C Very Good-87 \*TV \*TL  
PTA +484M +51F +22P 79%R 12/11  
PTA +4.21T +3.34UDC +3.75FLC 76%R  
GTPI +2031G

#### Gloryland Lazandra Rae-ET

137410732 Excellent-90 EX-MS  
5-04 2x 196d 18565 3.9 715 3.3 614 inc.  
2-11 2x 309d 21420 3.9 835 3.5 748  
2-00 2x 301d 18650 4.2 787 3.6 675  
4-00 2x 305d 18630 3.9 731 3.4 639  
• 8th Generation Excellent Roxy

Full sister to Lazandra Rae

**Gloryland Lakota Rae-ET VG-88 EX-MS**  
2-03 2x 365d 22850 3.8 857 3.3 751

Maternal sister to Lazandra Rae

**Gloryland Liberty Rae EX-95 3E DOM**  
7-03 2x 365d 47060 4.2 1965 3.1 1482  
• HM All-American 4-Year Old 2005  
• Sold for \$410,000 Cowtown Showcase Sale

#### Braedale Goldwyn

10705608C GP-CAN EX\*05 GM 8/08 \*TV \*TL  
PTA +194M +36F +18P 99%R 12/11  
PTA +3.09T +2.61UDC +2.70FLC  
GTPI +1988G

#### MD-Delight Durham Atlee-ET

131704103 Excellent-92 EEEEE DOM  
3-11 2x 365d 38290 5.5 2091 3.1 1177  
• All-American Senior 3-Year-Old 2005

#### Ocean-View Zenith-TW-ET

12980008 GM 8/08 \*TR \*TV \*TL \*TD  
PTA -163M +11F +5P 99%R 12/11  
PTA +1.31T +1.61UDC -.46FLC  
GTPI +1691G

#### Gloryland Lana Rae

120348329 Excellent-94 EEEEE 2E DOM  
5-06 2x 365d 29011 4.0 1159 3.2 938  
7-05 2x 365d 27580 3.6 986 3.1 859  
Life: 2113d 129620 3.7 4768 3.4 4343  
sired by: Startmore Rudolph-ET  
• 16 Excellent daughters all with EX-MS!

#### 3rd thru 9th Dams

##### Scientific Liza Rae-ET EX-90

4-09 2x 365d 26710 2.9 786 3.3 878

##### C Hanoverhill Tony Rae

EX-96 3E GMD DOM  
6-11 2x 365d 40220 4.1 1661 3.3 1331  
Life: 2247d 166396 4.1 6904 3.4 5612  
• Grand Champion Western National 1993

##### C Hanoverhill TT Roxette-ET EX-94 2E GMD

10-0 3x 365d 35040 4.3 1519 3.0 1063  
Life: 2104d 164789 4.1 6760 3.1 3587

##### Mil-R-Mor Roxette EX-CAN 30\*

7-01 2x 365d 24531 4.7 1153  
Life (6 Lacs): 121418 4.7 5728

##### C Glenridge Citation Roxy EX-97 4E GMD

10-1 2x 365d 25280 4.2 1060  
Life: 3620d 209784 4.5 9471  
• Queen of the Breed I and II

##### C Norton Court Model Vee EX-90

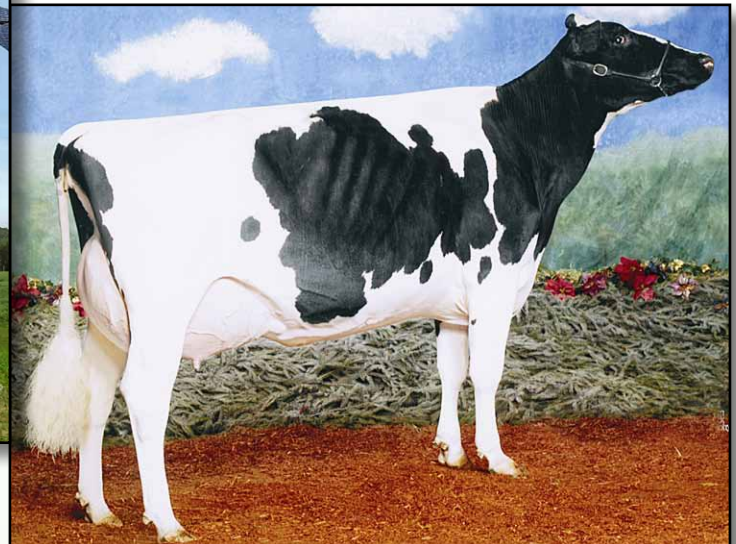
6-06 2x 365d 22483 3.9 875  
Life: 4183d 218629 3.9 8581  
• All-American Produce of Dam 1977, '78, '79

##### Norton Court Reflection Vale VG-85-CAN 5\*

8-11 2x 332d 20631 3.7 765  
Life (14 Lacs): 249583 3.7 9295



**JACOBS GOLDWYN VICTORY-ET VG-85-2YR-CAN**  
DAM OF LOT 28



**JACOBS SPIRIT VALSIE EX-92-2E-CAN 3\***  
2ND DAM OF LOT 28

**28**

**FIVE #1 EMBRYOS**

• *Worldwide Export Available*

**Holstein Plaza Contacts:**

Steve Mower +1 240-520-5906  
Jennifer Dingbaum +1 320-250-2412

**Gillette Windbrook-ETS**

7816429C EX-95-CAN EX'10 \*TV \*TL \*TY  
PTA +645M +53F +25P 90%R 12/11  
PTA +.0DPR 3.03SCS -1.2DPR  
PTA +2.53T +2.01UDC +2.43FLC 84%R  
GTPI +1838G

**Jacobs Goldwyn Victory-ET**

105794439C Very Good-85-2YR-CAN  
2-01 2x 208d 16717 4.1 681 3.3 556 inc.

**Gillette Brilea F B I-ET**

8209524C EX-94-CAN EX'05 \*TV \*TL \*TY  
PTA +1464M +45F +35P 99%R 12/11  
PTA +1.93T +1.46UDC +1.80FLC  
GTPI +1845G

**Gillette Blitz 2nd Wind-ET**

7352248C Very Good-88-CAN 34\*  
2-02 3x 365d 39096 3.6 1422 3.0 1182

**Braedale Goldwyn**

10705608C GP-CAN EX'05 GM 8/08 \*TV \*TL  
PTA +194M +36F +18P 99%R 12/11  
PTA +3.09T +2.61UDC +2.70FLC  
GTPI +1988G

**Jacobs Spirit Valsie**

10655032C Excellent-92-2E-CAN 3\*  
7-04 2x 365d 34381 4.5 1534 3.1 1054  
Life (4 Lacs): 150290 4.5 6726 3.4 5168  
• All-Canadian 4-Year-Old 2004  
• HM All-Canadian 5-Year-Old 2005  
• Grand Champion, QC Expo 2005  
• Res Grand Champ, Quebec Spring 2007

**3rd & 4th Dams**

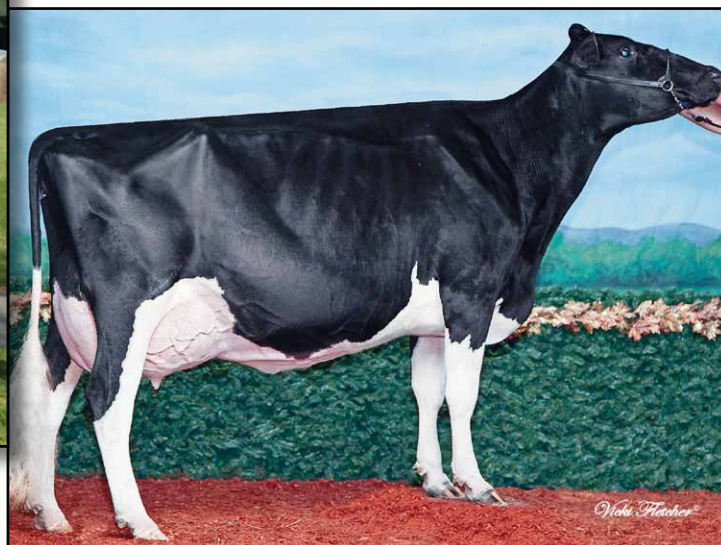
**Jacobs Rudolph Valso GP-84-2YR-CAN 5\***  
3-03 2x 305d 23472 4.4 1043 3.6 855  
• Reserve Junior Champion, Portneuf 1998

**Jacobs Jubilee Valse EX-2E-CAN 7\***

7-03 2x 364d 26089 4.1 1082 3.3 864  
Life (7 Lacs): 160607 4.0 6411 3.4 5494



**SAVAGE-LEIGH SHOTTLE LEONY VG-87 VG-MS**  
DAM OF LOT 29



**SAVAGE-LEIGH LEONA-ET EX-95 EX-MS**  
2ND DAM OF LOT 29

**29**

**Holstein Plaza Contacts:**

Steve Mower +1 240-520-5906  
Jennifer Dingbaum +1 320-250-2412

**Maple-Downs-I G W Atwood-ET**  
8956379C Very Good-87 \*TV \*TL  
PTA +484M +51F +22P 79%R 12/11  
PTA +4.21T +3.34UDC +3.75FLC 76%R  
GTPI +2031G

**Savage-Leigh Shottle Leony**  
8403001511881 Very Good-87 VG-MS  
2-01 2x 365d 32528 4.5 1474 3.1 1017

### THREE #1 EMBRYOS

- Worldwide Export Available

**Braedale Goldwyn**  
10705608C GP-CAN EX'05 GM 8/08 \*TV \*TL  
PTA +194M +36F +18P 99%R 12/11  
PTA +3.09T +2.61UDC +2.70FLC  
GTPI +1988G

**MD-Delight Durham Atlee-ET**  
131704103 Excellent-92 EEEEE DOM  
3-11 2x 365d 38290 5.5 2091 3.1 1177  
• All-American Senior 3-Year-Old 2005

**Picston Shottle-ET**  
598172GBR EX-95-GBR GM 8/08 \*TV \*TL  
PTA +1211M +58F +34P 99%R 12/11  
PTA +2.87T +2.11UDC +1.90FLC  
GTPI +2039G

**Savage-Leigh Leona-ET**  
61604187 Excellent-95 EX-MS  
3-01 2x 365d 33720 4.0 1335 3.3 1122  
• Res Sr Champ, All-American 2011  
• 2nd Aged Cow, NY Spring Int'l Show 2011  
• Nom All-American & All-Canadian 2010  
• 6th Jr 3-Yr Old, Int'l Holstein Show 2008  
• HHM All-American Jr 2-Yr Old 2007  
• Member Nom AA Produce of Dam 2007  
• Member Nom AA Sr Best 3 Females

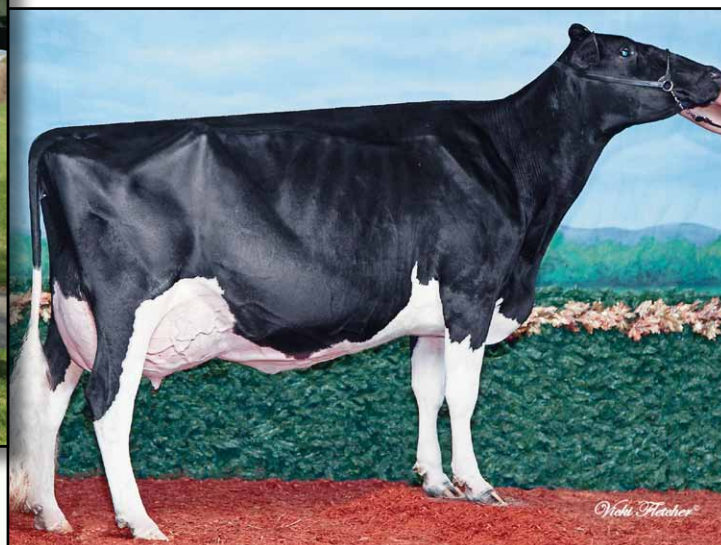
**4th thru 9th Dam**  
**Savage-Leigh Bellwood Linda**  
EX-92 2E GMD DOM  
2-10 2x 365d 40240 5.8 2349 3.4 1358  
Life: 1312d 126760 5.2 6576 3.2 4076  
• Nom All-American Jr. 3-Year-Old 1999  
• Nom Global Cow of the Year 2005  
**Savage-Leigh Star Linda-ET** VG-87 GMD  
2-02 2x 365d 30890 4.0 1236 3.1 952  
**Savage-Leigh Glenview Linda**  
EX-90 EVVE GMD DOM  
6-08 2x 365d 41820 4.6 1936 3.0 1247  
Life: 1892d 150300 4.4 6636 3.2 4813  
**Savage-Leigh Lindas Chairman** GP-84  
5-10 2x 365d 30620 3.8 1167 3.3 1013  
Life: 1972d 121550 3.9 4718 3.3 4013  
**Savage-Leigh Creek Lydia** VG-88  
4-11 2x 344d 16390 4.2 685 3.1 511  
**Savage-Leigh Kate Linda** VG-85  
6-01 2x 305d 19940 4.0 793

**Canyon-Breeze Allen-ET**  
17129288 VG -CAN EXTRA '01 \*TV  
PTA -554M -2F -6P 99%R 12/11  
PTA +2.22T +1.31UDC +1.79FLC  
GTPI +1335G

**Savage-Leigh Licorice-ET**  
60317090 EX-92 EX-MS GMD DOM  
4-02 2x 365d 51220 4.3 2179 3.3 1693  
Life: 1018d 113740 4.4 4968 3.4 3858  
• Dam of Nom AA Produce of Dam 2007  
• HHM All-American 5-Yr Old Cow 2006



**SAVAGE-LEIGH SHOTTLE LEONY VG-87 VG-MS**  
**DAM OF LOT 30**



**SAVAGE-LEIGH LEONA-ET EX-95 EX-MS**  
**2ND DAM OF LOT 30**

**30**

**Holstein Plaza Contacts:**

Steve Mower +1 240-520-5906  
Jennifer Dingbaum +1 320-250-2412

**Hunsberger Alchemy-ET**

69080973 \*RC \*TV \*TL \*TY  
PTA +1268M +44F +52P 75%R 12/11  
PTA +5.8PL 2.58SCS +1.3DPR 6%DCE  
PTA +3.17T +2.96UDC +2.01FLC 71%R  
GTPI +2361G

**Savage-Leigh Shottle Leony**

8403001511881 Very Good-87 VG-MS  
2-01 2x 365d 32528 4.5 1474 3.1 1017

**FIVE #1 EMBRYOS**

• *Worldwide Export Available*

**Scientific Destry-ET**

138122625 Very Good-87 \*RC \*TV \*TL  
PTA -545M +0F +7P 95%R 12/11  
PTA +3.13T +2.90UDC +2.34FLC  
GTPI +1977G

**Hunsberger Shottle Alexis**

62653992 Excellent-90 EX-MS  
2-03 2x 305d 25830 4.0 1044 3.2 816

**Picston Shottle-ET**

598172GBR EX-95-GBR GM 8/08 \*TV \*TL  
PTA +1211M +58F +34P 99%R 12/11  
PTA +2.87T +2.11UDC +1.90FLC  
GTPI +2039G

**Savage-Leigh Leona-ET**

61604187 Excellent-95 EX-MS  
3-01 2x 365d 33720 4.0 1335 3.3 1122  
• *Res Sr Champ, All-American 2011*  
• *2nd Aged Cow, NY Spring Int'l Show 2011*  
• *Nom All-American & All-Canadian 2010*  
• *6th Jr 3-Yr Old, Int'l Holstein Show 2008*  
• *HHM All-American Jr 2-Yr Old 2007*  
• *Member Nom AA Produce of Dam 2007*  
• *Member Nom AA Sr Best 3 Females*

**4th thru 9th Dam**

**Savage-Leigh Bellwood Linda**

EX-92 2E GMD DOM  
2-10 2x 365d 40240 5.8 2349 3.4 1358  
Life: 1312d 126760 5.2 6576 3.2 4076  
• *Nom All-American Jr. 3-Year-Old 1999*  
• *Nom Global Cow of the Year 2005*

**Savage-Leigh Star Linda-ET VG-87 GMD**

2-02 2x 365d 30890 4.0 1236 3.1 952

**Savage-Leigh Glenview Linda**

EX-90 EVVE GMD DOM  
6-08 2x 365d 41820 4.6 1936 3.0 1247  
Life: 1892d 150300 4.4 6636 3.2 4813

**Savage-Leigh Lindas Chairman GP-84**

5-10 2x 365d 30620 3.8 1167 3.3 1013  
Life: 1972d 121550 3.9 4718 3.3 4013

**Savage-Leigh Creek Lydia VG-88**

4-11 2x 344d 16390 4.2 685 3.1 511

**Savage-Leigh Kate Linda VG-85**

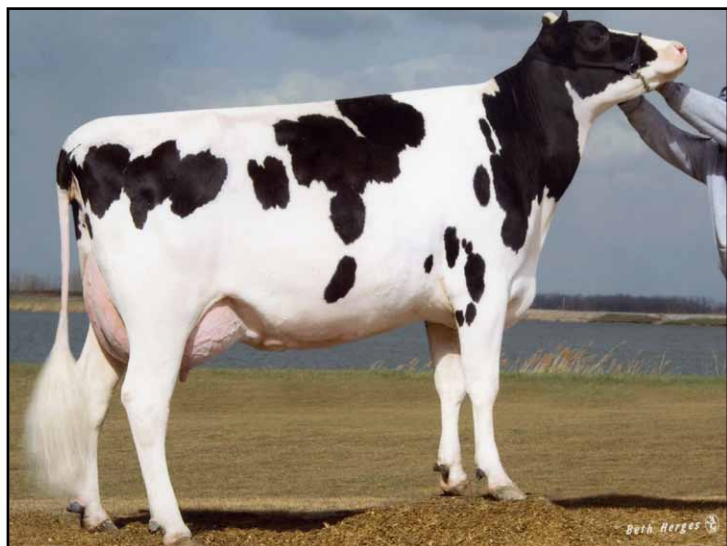
6-01 2x 305d 19940 4.0 793

**Canyon-Breeze Allen-ET**

17129288 VG -CAN EXTRA '01 \*TV  
PTA -554M -2F -6P 99%R 12/11  
PTA +2.22T +1.31UDC +1.79FLC  
GTPI +1335G

**Savage-Leigh Licorice-ET**

60317090 EX-92 EX-MS GMD DOM  
4-02 2x 365d 51220 4.3 2179 3.3 1693  
Life: 1018d 113740 4.4 4968 3.4 3858  
• *Dam of Nom AA Produce of Dam 2007*  
• *HHM All-American 5-Yr Old Cow 2006*



**EO-SIEMERS ASHLYNS ASHLEY EX-90 EX-MS**  
DAM OF LOT 31



**TRI-DAY ASHLYN-ET EX-96 2E GMD DOM**  
2ND DAM OF LOT 31

**31**

**FIVE #1 EMBRYOS**

- *Worldwide Export Available*

**Holstein Plaza Contacts:**

Steve Mower +1 240-520-5906  
Jennifer Dingbaum +1 320-250-2412

**Regancrest S Braxton-ET**

61898423 Excellent-94 \*TR \*TV \*TL \*TD  
PTA +1085M +17F +16P 96%R 12/11  
PTA +3.87T +2.24UDC +2.41FLC 93%R  
GTPI +1585G

**EO-Siemers Ashlyns Ashley**

60810980 Excellent-90 EX-MS @ 3-06  
3-05 3x 333d 40920 4.1 1670 3.2 1324  
2-05 3x 304d 26090 3.8 988 3.3 851

**Picston Shottle-ET**

598172GBR EX-95-GBR GM 8/08 \*TV \*TL  
PTA +1211M +58F +34P 99%R 12/11  
PTA +2.87T +2.11UDC +1.90FLC  
GTPI +2039G

**Regancrest-PR Barbie-ET**

60602011 Excellent-92 EEEEE GMD DOM  
2-06 2x 365d 31690 3.9 1237 3.3 1050  
• *HM All-American Jr 3-Year-Old Cow 2004*

**Comestar Outside-ET**

6026421C EX-CAN EX'98 GM \*TV \*TL  
PTA +334M +36F -1P 99%R 12/11  
PTA +1.38T +.96UDC +1.78FLC  
GTPI +1730G

**Tri-Day Ashlyn-ET**

17181481 Excellent-96 2E GMD DOM  
4-09 2x 365d 43090 4.8 2079 3.3 1422  
3-08 2x 348d 38570 4.3 1675 3.4 1329  
Life: 1374d 144770 4.6 6665 3.4 4861  
• *Dam of 11 EX and 20 VG Offspring to date*

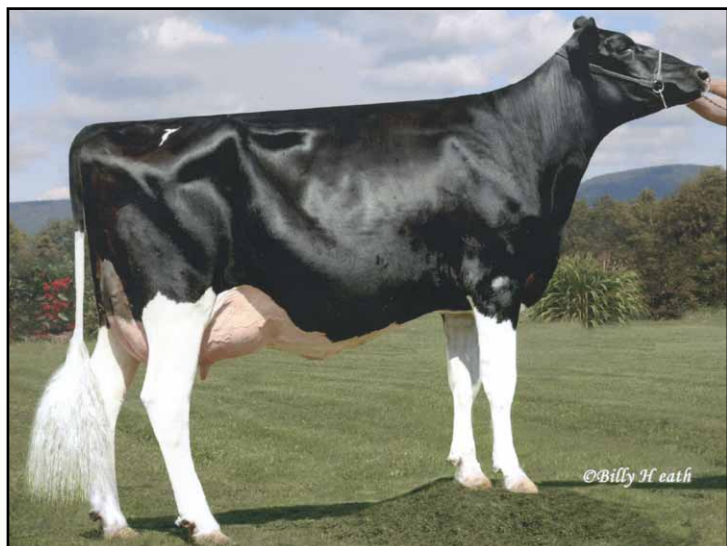
**Ashlyn!**

- All-Time All-American 4-Yr Old 2003
- HHM All-Time AA Sr 3-Yr Old 2003
- Voted All-World by HI 2001
- All-American 4-Yr-Old 2001
- All-Canadian 4-Yr-Old 2001
- Grand Champ WDE 2001
- Grand Champ Eastern Nat'l 2001
- Grand Champ Royal Winter Fair 2001
- Grand Champ MD State Fair 2001
- Supreme Champ WDE 2001
- All-American Sr 3-Yr Old 2000
- Res. All-Canadian Sr 3-Yr Old 2000
- Res. Intermediate Champion WDE 2000
- 1st Sr 3-Yr Old WDE 2000
- Res. Gr Champ Eastern Fall Nat'l 2000
- 1st Sr 3-Yr Old Eastern Fall Nat'l 20001

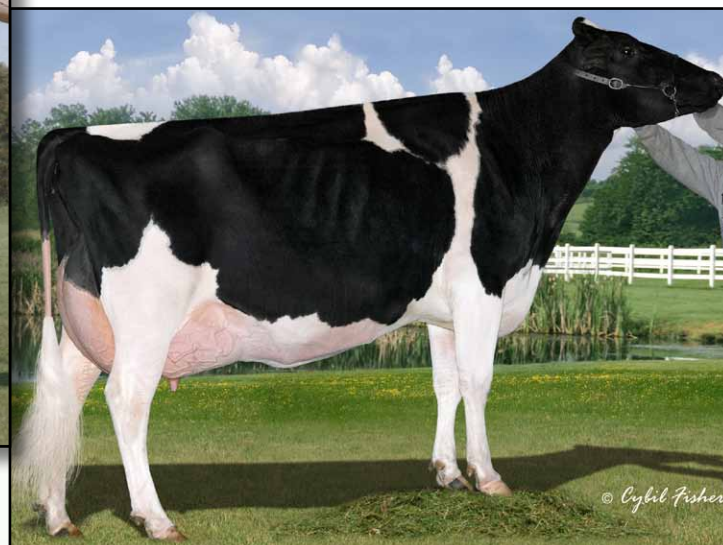
**3rd & 4th Dams**

**Bendy-Brook Odyssey Favorite EX-92 DOM**  
6-01 2x 337d 22670 3.4 770 3.1 706  
• *Res All-American Produce of Dam 2000*  
• *Nom. Jr All-American Aged Cow 1995*

**Bendy-Brook Star Fonda VG-86 VG-MS**  
3-11 2x 290d 23390 3.5 826 3.1 724  
Life: 1677d 10850 3.4 3725 3.2 3430



**BUTLER-BUTZ SAM AUTUM-ET VG-88 VG-MS  
DAM OF LOT 32**



**EO SIEMERS ASHLYNS ANGEL-ET EX-95 EEEEE  
2ND DAM OF LOT 32**



### Holstein Plaza Contacts:

Steve Mower +1 240-520-5906  
Jennifer Dingbaum +1 320-250-2412

### Gillette Stanley Cup

8932152C \*TY  
PTA +297M +56F +10P 87%R 12/11  
PTA +2.95T +2.67UDC +2.50FLC 81%R  
GTPI +1694G

### Butler-Butz Sam Autum-ET

62433011 Very Good-88 VG-MS  
2-06 2x 365d 32515 4.2 1367 3.3 1079

## FOUR #1 EMBRYOS

- Worldwide Export Available

### Sandy-Valley Bolton-ET

131823833 Excellent-90 GM 8/10 \*TV \*TL  
PTA +1945M +70F +51P 99%R 12/11  
PTA +2.77T +2.63UDC +2.25FLC  
GTPI +2010G

### Gillette Blitz 2nd Wind-ET

7352248C Very Good-88-CAN 34\*  
2-02 3x 365d 39096 3.6 1422 3.0 1182

### Regancrest-MR Drham Sam-ET

207184639 GM 8/06 \*TR \*TV \*TL  
PTA -5M +23F +5P 99%R 12/11  
PTA +1.49T +1.24UDC +1.78FLC  
GTPI +1526G

### EO Siemers Ashlyns Angel-ET

60811262 Excellent-95 EEEEE 2E GMD  
4-03 2x 365d 41370 4.2 1749 3.0 1277  
2-04 2x 365d 31970 4.7 1498 3.3 1046  
• All-American Winter Yearling 2005  
• Res All-American Senior 2-Yr Old 2006  
• HM All-Canadian Aged Cow 2010  
• Grand Champion, East Fall Nat'l 2010

### Ashlyn!

- All-Time All-American 4-Yr Old 2003
- HHM All-Time AA Sr 3-Yr Old 2003
- Voted All-World by HI 2001
- All-American 4-Yr-Old 2001
- All-Canadian 4-Yr-Old 2001
- Grand Champ WDE 2001
- Grand Champ Eastern Nat'l 2001
- Grand Champ Royal Winter Fair 2001
- Grand Champ MD State Fair 2001
- Supreme Champ WDE 2001
- All-American Sr 3-Yr Old 2000
- Res. All-Canadian Sr 3-Yr Old 2000
- Res. Intermediate Champion WDE 2000
- 1st Sr 3-Yr Old WDE 2000
- Res. Gr Champ Eastern Fall Nat'l 2000
- 1st Sr 3-Yr Old Eastern Fall Nat'l 20001

### 4th & 5th Dams

#### Bendy-Brook Odyssey Favorite EX-92 DOM

6-01 2x 337d 22670 3.4 770 3.1 706  
• Res All-American Produce of Dam 2000  
• Nom. Jr All-American Aged Cow 1995

#### Bendy-Brook Star Fonda VG-86 VG-MS

3-11 2x 290d 23390 3.5 826 3.1 724  
Life: 1677d 10850 3.4 3725 3.2 3430

### Comestar Stormatic-ET

6947936C EX-CAN GM 2/07 \*TV \*TL  
PTA +391M -2F +4P 99%R 12/11  
PTA +1.74T +.93UDC +2.57FLC  
GTPI +1509G

### Tri-Day Ashlyn-ET

17181481 Excellent-96 2E GMD DOM  
4-09 2x 365d 43090 4.8 2079 3.3 1422  
3-08 2x 348d 38570 4.3 1675 3.4 1329  
Life: 1374d 144770 4.6 6665 3.4 4861  
• Dam of 11 EX and 20 VG Offspring to date



**RED-VISION DORY-RED-ET EX-92 EX-MS 2E**  
**DAM OF LOT 33**

**33**

**THREE #1 EMBRYOS**

• *Worldwide Export Available*

**Holstein Plaza Contacts:**

Steve Mower +1 240-520-5906

Jennifer Dingbaum +1 320-250-2412

**Fieldhouse Redlou-Red-ET**

8884648C VG-88-CAN ST'09

PTA -271M -2F -4P 96%R 12/11

PTA +1.97T +2.07UDC +1.40FLC 93%R

GTPI +1683G

**Red-Vision Dory-Red-ET**

134218416 Excellent-92 EX-MS 2E

4-10 2x 365d 32000 4.2 1333 3.2 1038

2-07 2x 305d 24790 4.3 1055 3.4 831

- *Nom. All-American R&W 5-Yr-Old 2008*
- *1st 5-Year-Old, Eastern Nat'l R&W Show 2008*
- *5th 5-Year-Old, Madison R&W Show 2008*
- *Nom All-American 4-Year-Old R&W 2007*
- *HHM All-American R&W Sr 3-Yr Old 2006*
- *Nom All-American R&W Sr 2-Yr Old 2005*

*Full sisters to Dory-Red*

**Red-Vision Dis Della-Red-ET EX-91 EX-MS**

2-05 2x 365d 33021 4.0 1275 3.2 991

- *All-American R&W Sr 2-Year Old 2005*
- *Res Grand Champ, Grand Int'l R&W 2005*

**Red-Vision Dis Danet-Red-ET EX-90 EX-MS**

- *Nominated AA R&W Sr 3-Yr Old 2006*

**Ladino Park Talent-Imp-ET**

AUS 930377 EX-90 ST'03 \*RC \*TV \*TL

PTA -217M -29F +4P 99%R 12/11

PTA +2.12T +2.34UDC +1.04FLC

GTPI +1446G

**Fieldhouse Red Marker Lou-ET**

7172533C Excellent-91-CAN

5-02 2x 365d 41391 4.2 1733 3.1 1274

**Carrousel Distrigene-Red-ET**

130895505 Excellent-90 \*TV \*TL

PTA -1275M -18F -44P 99%R 12/11

PTA +1.70T +.89UDC +.54FLC

GTPI +981G

**Heatherstone-V Delit-Red-ET**

15779895 Excellent-91 EEEEEV 3E

4-06 2x 365d 36530 3.3 1192 2.9 1076

2-04 2x 365d 31570 3.3 1048 3.2 1026

Life: 1962d 159290 3.3 5316 3.0 4831

**4th thru 5th Dam**

**Roulette Damsel-ET EX-90 EX-MS GMD**

7-02 2x 365d 43880 3.3 1467 3.1 1376

Life: 2078d 177860 3.7 6565 3.4 6014

**Roulette Dewdrop-Red EX-91 GMD DOM**

5-02 2x 365d 32110 4.3 1394 3.1 1003

Life: 2650d 178050 4.4 7921 3.2 5715

**Roulette Jetstar Dot VG-88**

7-09 2x 365d 31290 4.0 1244 3.0 954

Life: 2758d 164100 4.2 6918 3.2 5227



**SCIENTIFIC DELANEY RAE-ETS \*RC EX-90  
DAM OF LOT 34**



**SCIENTIFIC DEBUTANTE RAE-ET EX-92 EEEEE  
2ND DAM OF LOT 34**

**34**

**Holstein Plaza Contacts:**

Steve Mower +1 240-520-5906  
Jennifer Dingbaum +1 320-250-2412

**Sandy-Valley Colt-P-Red-TW \*PO**

68731810 \*TL \*TD  
PTA +751M +12F +27P 78%R 12/11  
PTA +5.7PL +530NM\$ 2.73SCS +1.6DPR  
PTA +2.01T +2.45UDC +2.25FLC 75%R  
GTPI +2050G

**Scientific Delaney Rae-ETS \*RC**

137892893 Excellent-90 \*TV  
4-01 2x 365d 34159 3.2 1079 3.6 1243  
2-06 2x 365d 30600 3.3 1016 3.5 1081  
• 8th Generation Excellent Roxy!

**FOUR #1 EMBRYOS**

• *Worldwide Export Available*

**Aggravation Lawn Boy P-Red \*PO**

133080890 EX-90 GM 8/08 \*TV \*TL \*TD  
PTA -47M -8F +16P 99%R 12/11  
PTA +1.28T +1.51UDC +1.31FLC  
GTPI +1809G

**Sandy-Valley-W B Crystal-ET**

63114952 Very Good-86  
2-01 2x 305d 31470 2.9 908 3.3 1029

**Ladino Park Talent-Imp-ET**

AUS 930377 EX-90 ST'03 \*RC \*TV \*TL  
PTA -217M -29F +4P 99%R 12/11  
PTA +2.12T +2.34UDC +1.04FLC  
GTPI +1446G

**Scientific Debutante Rae-ET**

132416603 Excellent-92 EEEEE \*RC \*CV  
2-02 2x 365d 32930 4.4 1440 3.4 1132  
• All-American 4-Yr-Old Cow 2005  
• Res Grand Champ, Int'l Show 2005  
• HM All-American Jr 3-Yr-Old Cow 2004  
• All-WI Jr. 3-Yr-Old & 4-Yr-Old Cow  
• Res Grand Champ, Mid-W Sprg/Nat 2004  
• Int Champion, Mid-West Sprg/Nat 2004

**3rd thru 9th Dams**

**Scientific Jubilant Rae-ET EX-90 DOM**  
5-11 2x 365d 38880 4.1 1608 3.6 1403  
Life: 1394d 117590 4.0 4707 3.6 4242

**C Hanoverhill Tony Rae**

EX-96 3E GMD DOM  
6-11 2x 365d 40220 4.1 1661 3.3 1331  
Life: 2247d 166396 4.1 6904 3.4 5612  
• Grand Champion Western National 1993

**C Hanoverhill TT Roxette-ET EX-94 2E GMD**

10-0 3x 365d 35040 4.3 1519 3.0 1063  
Life: 2104d 164789 4.1 6760 3.1 3587

**Mil-R-Mor Roxette EX-CAN 30\***

7-01 2x 365d 24531 4.7 1153  
Life (6 Lacs): 121418 4.7 5728

**C Glenridge Citation Roxy EX-97 4E GMD**

10-1 2x 365d 25280 4.2 1060  
Life: 3620d 209784 4.5 9471  
• Queen of the Breed I and II

**C Norton Court Model Vee EX-90**

6-06 2x 365d 22483 3.9 875  
Life: 4183d 218629 3.9 8581  
• All-American Produce of Dam 1977, '78, '79

**Norton Court Reflection Vale VG-85-CAN 5\***

8-11 2x 332d 20631 3.7 765  
Life (14 Lacs): 249583 3.7 9295



**KALEIDOSCOPE R SCARLET-RED EX-90 2E**  
**DAM OF LOT 35**

**35**

**THREE #1 EMBRYOS**

• *Worldwide Export Available*

**Holstein Plaza Contacts:**

Steve Mower +1 240-520-5906  
Jennifer Dingbaum +1 320-250-2412

**Hunsberger Alchemy-ET**

69080973 \*RC \*TV \*TL \*TY  
PTA +1268M +44F +52P 75%R 12/11  
PTA +5.8PL 2.58SCS +1.3DPR 6%DCE  
PTA +3.17T +2.96UDC +2.01FLC 71%R  
GTPI +2361G

**Kaleidoscope R Scarlet-Red**

135459041 Excellent-90 EEEEE 2E  
5-00 2x 337d 28510 3.8 1087 3.4 965  
4-00 2x 303d 22890 4.7 1080 3.2 742  
6-00 2x 305d 30540 3.1 957 3.1 961  
2-06 2x 305d 22300 4.2 940 3.5 780  
3-09 2x 301d 22080 4.2 926 3.2 715  
Life: 1430d 113510 3.9 4466 3.3 3799  
• *7th generation Excellent Roxy!*

**Scientific Destry-ET**

138122625 Very Good-87 \*RC \*TV \*TL  
PTA -545M +0F +7P 95%R 12/11  
PTA +3.13T +2.90UDC +2.34FLC  
GTPI +1977G

**Hunsberger Shottle Alexis**

62653992 Excellent-90 EX-MS  
2-03 2x 305d 25830 4.0 1044 3.2 816

**STBVQ Rubens-ET \*RC**

5844883C VG-88-CAN ST\*98 GM 8/04  
PTA -546M -18F +0P 99%R 12/11  
PTA +1.32T +1.86UDC +.20FLC  
GTPI +1378G

**Kaleidoscope Scarlet-Red-ET**

126261754 Excellent-90 EVVVE @ 9-06  
6-11 2x 365d 28560 4.1 1182 3.3 954  
9-01 2x 314d 22490 4.5 1006 3.3 745  
2-03 2x 305d 22560 4.5 1004 3.5 792  
Life: 1657d 110370 4.4 4805 3.4 3739

**3rd thru 7th Dams**

**Scientific Christmas Star-ET \*RC**

EX-90 2E GMD  
3-03 3x 365d 40570 3.6 1457 3.2 1296  
Life: 2402d 197400 3.9 7600 3.2 6411

**C Hanoverhill TT Roxette-ET EX-94 2E GMD**

10-0 3x 365d 35040 4.3 1519 3.0 1063  
Life: 2104d 164789 4.1 6760 3.1 3587

**Mil-R-Mor Roxette EX-CAN 30\***

7-01 2x 365d 24531 4.7 1153  
Life (6 Lacs): 121418 4.7 5728

**C Glenridge Citation Roxy EX-97 4E GMD**

10-1 2x 365d 25280 4.2 1060  
Life: 3620d 209784 4.5 9471  
• *Queen of the Breed I and II*

**C Norton Court Model Vee EX-90**

6-06 2x 365d 22483 3.9 875  
Life: 4183d 218629 3.9 8581  
• *All-American Produce of Dam 1977, '78, '79*

**Norton Court Reflection Vale VG-85-CAN 5\***

8-11 2x 332d 20631 3.7 765  
Life (14 Lacs): 249583 3.7 9295



**MORNINGVIEW BOLTON RICKI EX-90 EX-MS @ 4-06**  
**DAM OF LOT 36**

**36****FIVE #1 EMBRYOS**

• *Worldwide Export Available*

**Holstein Plaza Contacts:**

Steve Mower +1 240-520-5906

Jennifer Dingbaum +1 320-250-2412

**Morningview Levi**

63927923 Very Good-85 \*TV \*TL \*TY  
PTA +1006M +71F +56P 94%R 12/11  
PTA +1.44T +.52UDC +1.98FLC 93%R  
GTPI +2207G

**Morningview Bolton Ricki \*TY**

63927951 Excellent-90 EX-MS @ 4-06  
GTPI+1967 +958M +39F +17P +2.92T  
3-11 2x 196d 22139 3.9 864 3.0 664 inc.  
2-02 2x 305d 25350 3.7 937 3.1 795

**R-E-W Buckeye-ET**

130588960 \*TV \*TL  
PTA +1102M +20F +25P 99%R 12/11  
PTA +1.43T +1.45UDC +1.53FLC  
GTPI +1762G

**Morningview Oman Libby-ET**

135404694 Very Good-86 VVVVV  
4-00 2x 365d 36980 4.4 1632 3.7 1365

**Sandy-Valley Bolton-ET**

131823833 Excellent-90 GM 8/10 \*TV \*TL  
PTA +1945M +70F +51P 99%R 12/11  
PTA +2.77T +2.63UDC +2.25FLC  
GTPI +2010G

**Morningview Stmtc Robin-ET**

135244180 Very Good-88 VEEVV @ 5-07  
3-09 2x 365d 35140 3.8 1325 3.2 1136  
2-09 2x 321d 27820 3.8 1053 3.2 882  
5-02 2x 258d 27210 4.1 1108 3.1 830  
*sired by: Comestar Stormatic*

**3rd thru 8th Dams****Morningview BlmrsJ Judy-ET****Morningview Converse Judy  
EX-93 GMD DOM**

4-05 2x 365d 38100 4.1 1565 3.1 1197  
• *Sons in AI*

**Morningview Aerostar Jix-ET VG-87 EX-MS**

5-06 2x 340d 32040 3.9 1249 3.2 1028  
Life: 1400d 110030 3.7 4110 3.3 3670

**Walnut-Knoll Judy-ET VG-87 GMD DOM**

4-08 2x 357d 37210 4.0 1480 3.0 1116

**Walnut-Knoll RORAE Jenny**

EX-91 2E GMD DOM  
7-04 2x 365d 29830 4.1 1210 2.8 828  
Life: 2581d 156590 4.0 6248

**Lynnberry Gem VG-89 EEEV**

6-02 2x 365d 27770 4.1 1143



MORNINGVIEW BOLTON RICKI EX-90 EX-MS @ 4-06  
DAM OF LOT 37

**37****FIVE #1 EMBRYOS**

• *Worldwide Export Available*

**Holstein Plaza Contacts:**

Steve Mower +1 240-520-5906

Jennifer Dingbaum +1 320-250-2412

**Co-op O-Style Oman Just-ET**

137611441 \*TV \*TL  
PTA +1666M +44F +48P 93%R 12/11  
PTA +5.9PL 2.73SCS +2.1DPR  
PTA +1.36T +1.25UDC +2.35FLC 91%R  
GTPI +2180G

**Morningview Bolton Ricki \*TY**

63927951 Excellent-90 EX-MS @ 4-06  
GTPI+1967 +958M +39F +17P +2.92T  
3-11 2x 196d 22139 3.9 864 3.0 664 inc.  
2-02 2x 305d 25350 3.7 937 3.1 795

**O-Bee Manfred Justice-ET**

122358313 EX-94 GM 8/08 \*TR \*TV \*TL  
PTA +854M +66F +48P 99%R 12/11  
PTA +.09T -.37UDC +1.18FLC  
GTPI +2052G

**Kings-Ransom TM Deva CRI-ET**

61089361 Very Good-88 VG-MS DOM  
3-02 3x 305d 36930 3.5 1281 2.9 1057

**Sandy-Valley Bolton-ET**

131823833 Excellent-90 GM 8/10 \*TV \*TL  
PTA +1945M +70F +51P 99%R 12/11  
PTA +2.77T +2.63UDC +2.25FLC  
GTPI +2010G

**Morningview Stmtc Robin-ET**

135244180 Very Good-88 VEEVV @ 5-07  
3-09 2x 365d 35140 3.8 1325 3.2 1136  
2-09 2x 321d 27820 3.8 1053 3.2 882  
5-02 2x 258d 27210 4.1 1108 3.1 830  
*sired by: Comestar Stormatic*

**3rd thru 8th Dams****Morningview BlmrsJ Judy-ET****Morningview Converse Judy  
EX-93 GMD DOM**

4-05 2x 365d 38100 4.1 1565 3.1 1197  
• *Sons in AI*

**Morningview Aerostar Jix-ET VG-87 EX-MS**

5-06 2x 340d 32040 3.9 1249 3.2 1028  
Life: 1400d 110030 3.7 4110 3.3 3670

**Walnut-Knoll Judy-ET VG-87 GMD DOM**

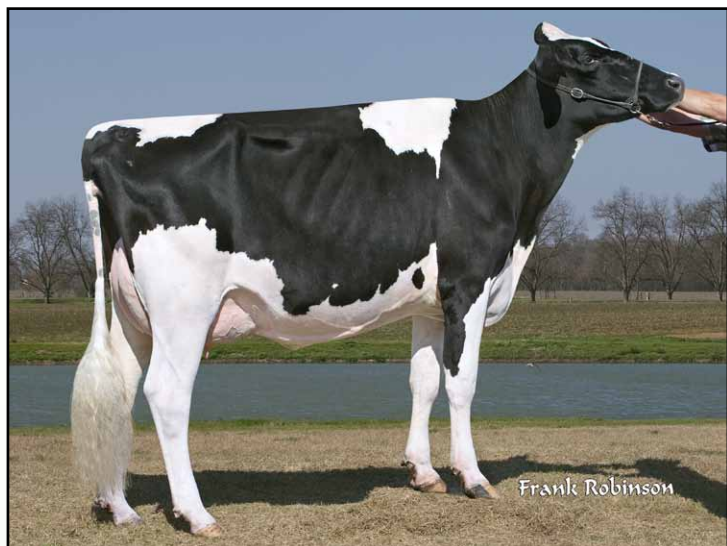
4-08 2x 357d 37210 4.0 1480 3.0 1116

**Walnut-Knoll RORAE Jenny**

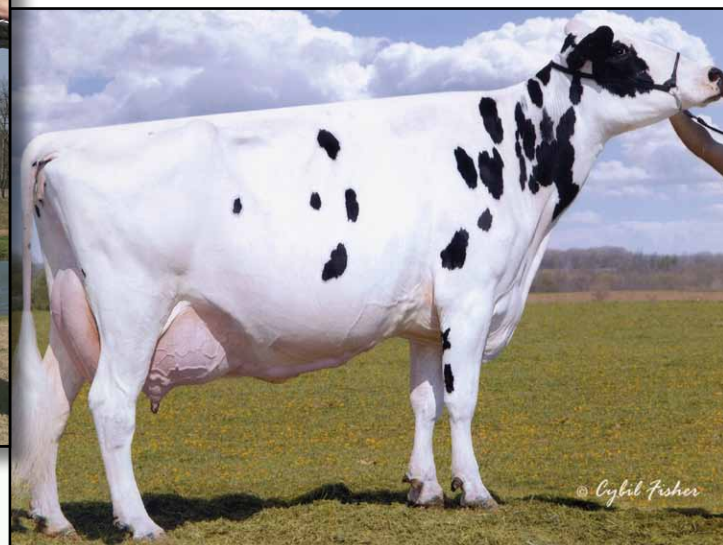
EX-91 2E GMD DOM  
7-04 2x 365d 29830 4.1 1210 2.8 828  
Life: 2581d 156590 4.0 6248

**Lynnberry Gem VG-89 EEEV**

6-02 2x 365d 27770 4.1 1143



**KINGSMILL ROY ROULETTE-ET EX-91 EX-MS**  
DAM OF LOT 50



**ASTRAHOE LJ ROSA REBEL-ET EX-92 2E**  
2ND DAM OF LOT 50



### FIVE #1 EMBRYOS

• Worldwide Export Available

#### Holstein Plaza Contacts:

Steve Mower +1 240-520-5906  
Jennifer Dingbaum +1 320-250-2412

#### Regancrest-GV S Bradnick-ET

66625940 \*TR \*TV \*TL \*TY \*TD  
PTA +1242M +25F +36P 79R 12/11  
PTA +2.8PL 2.98SCS -2.7DPR 6%DCE  
PTA +4.98T +3.94UDC +4.03FLC 75R 12/11  
GTPI +2128G

#### Kingsmill Roy Roulette-ET

63016084 Excellent-91 EX-MS @ 4-05  
4-03 2x 365d 26137 3.9 1026 3.1 812  
2-04 2x 365d 18545 3.8 699 2.9 391  
• 14th generation Excellent!

#### Gen-Mark Stmatic Sanchez

134422312 Excellent-94 \*TR \*TV \*TL \*TD  
PTA +771M +5F +19P 99%R 12/11  
PTA +3.08T +2.24UDC +2.80FLC  
GTPI +1744G

#### Regancrest Brea-ET

62496852 Very Good-88 DOM  
2-02 2x 365d 31960 3.6 1164 3.0 966

#### Roylane Jordan-ET

17064727 Excellent-95 GM 2/04 \*TV \*TL  
PTA -282M -8F -13P 99%R 12/11  
PTA +2.04T +1.95UDC +.24FLC 99%R  
GTPI +1376G

#### Astrahoe LJ Rosa Rebel-ET

130430762 Excellent-92 EEEVV 2E  
7-05 2x 365d 48580 4.2 2021 3.0 1468  
3-02 3x 305d 32120 3.9 1250 3.1 1007  
Life: 1186d 110960 3.9 4326 3.2 3529

#### 3rd thru 14th Dams

**Pinehurst Royal Rosa-ET EX-91 2E**  
3-10 3x 365d 41395 3.3 1358 2.8 1145  
Life: 1212d 115400 3.5 4073 3.1 3593  
**Pinehurst Roulade EX-92 EEEEE 2E**  
5-00 3x 365d 35130 3.6 1271 3.2 1115  
Life: 1761d 142070 3.8 5395 3.3 4705  
**Pinehurst Sweet Cleo EX-90 EEVEV**  
6-00 3x 365d 40380 4.4 1776 3.2 1305  
**Pinehurst Sweet Freedom EX-90 VEVE**  
5-07 3x 330d 34520 4.3 1500 3.1 1084  
**Pinehurst Sweet Delite EX-91 3E GMD**  
8-10 3x 365d 28460 4.2 1194 3.2 917  
Life: 2228d 151600 4.0 6116 3.2 4907  
**Pinehurst Rapture EX-96 4E GMD**  
8-02 3x 365d 30370 4.2 1290 3.1 948  
Life: 2297d 160790 3.9 6337 3.0 2469  
**Pinehurst Fragrance EX-90 2E**  
4-8 3x 365d 34490 3.6 1234  
**Hayssen Fond Ariel EX-90 2E**  
8-06 2x 328d 23330 3.2 753  
**Hayssen D V Audrey EX-90 2E**  
9-03 2x 365d 23670 4.4 1035  
**Whirlhill Q Rag Apple Ariel EX-92**  
6-02 2x 365d 26755 4.2 1134  
**Arlite Posch EX-92 GMD**  
5-03 2x 365d 21193 3.7 779  
**Audrey Posch EX-93 GMD**  
14-2 2x 365d 25572 3.7 948



**TRAMILDA-J ATWOOD RHONDA-ET**  
DAM OF LOT 39



**KINGSMILL ROY ROULETTE-ET EX-91 EX-MS**  
2ND DAM OF LOT 39

**39**

**Holstein Plaza Contacts:**

Steve Mower +1 240-520-5906

Jennifer Dingbaum +1 320-250-2412



**Lirr Drew Dempsey**

61083609 Very Good-86 \*TV \*TL

PTA +71M +32F +20P 89%R 12/11

PTA +3.23T +2.50UDC +2.88FLC 82%R

GTPI +2047G / LPI+2638

**Tramilda-J Atwood Rhonda-ET**

140748868 Born: December 2, 2010

GTPI+1837 +1060M +43F +27P +3.24T

• Potential 15th generation Excellent!

**SIX #1 EMBRYOS**

• Worldwide Export Available

**Braedale Goldwyn**

10705608C GP-CAN EX'05 GM 8/08 \*TV \*TL

PTA +194M +36F +18P 99%R 12/11

PTA +3.09T +2.61UDC +2.70FLC

GTPI +1988G

**Kerndt Sneezy Derry Drew**

207658039 Very Good-88 EEVVV

3-08 2x 365d 31150 3.8 1191 3.3 1014

**Maple-Downs-I G W Atwood-ET**

8956379C Very Good-87 \*TV \*TL

PTA +484M +51F +22P 79%R 12/11

PTA +4.21T +3.34UDC +3.75FLC 76%R

GTPI +2031G

**Kingsmill Roy Roulette-ET**

63016084 Excellent-91 EX-MS @ 4-05

4-03 2x 365d 26137 3.9 1026 3.1 812

2-04 2x 365d 18545 3.8 699 2.9 391

**3rd thru 15th Dams**

**Astrahoe LJ Rosa Rebel-ET EX-92 2E**

7-05 2x 365d 48580 4.2 2021 3.0 1468

Life: 1186d 110960 3.9 4326 3.2 3529

**Pinehurst Royal Rosa-ET EX-91 2E**

3-10 3x 365d 41395 3.3 1358 2.8 1145

Life: 1212d 115400 3.5 4073 3.1 3593

**Pinehurst Roulade EX-92 EEEEE 2E**

5-00 3x 365d 35130 3.6 1271 3.2 1115

Life: 1761d 142070 3.8 5395 3.3 4705

**Pinehurst Sweet Cleo EX-90 EEVEV**

6-00 3x 365d 40380 4.4 1776 3.2 1305

**Pinehurst Sweet Freedom EX-90 VEVE**

5-07 3x 330d 34520 4.3 1500 3.1 1084

**Pinehurst Sweet Delite EX-91 3E GMD**

8-10 3x 365d 28460 4.2 1194 3.2 917

Life: 2228d 151600 4.0 6116 3.2 4907

**Pinehurst Rapture EX-96 4E GMD**

8-02 3x 365d 30370 4.2 1290 3.1 948

Life: 2297d 160790 3.9 6337 3.0 2469

**Pinehurst Fragrance EX-90 2E**

4-8 3x 365d 34490 3.6 1234

**Hayssen Fond Ariel EX-90 2E**

8-06 2x 328d 23330 3.2 753

**Hayssen D V Audrey EX-90 2E**

9-03 2x 365d 23670 4.4 1035

**Whirlhill Q Rag Apple Ariel EX-92**

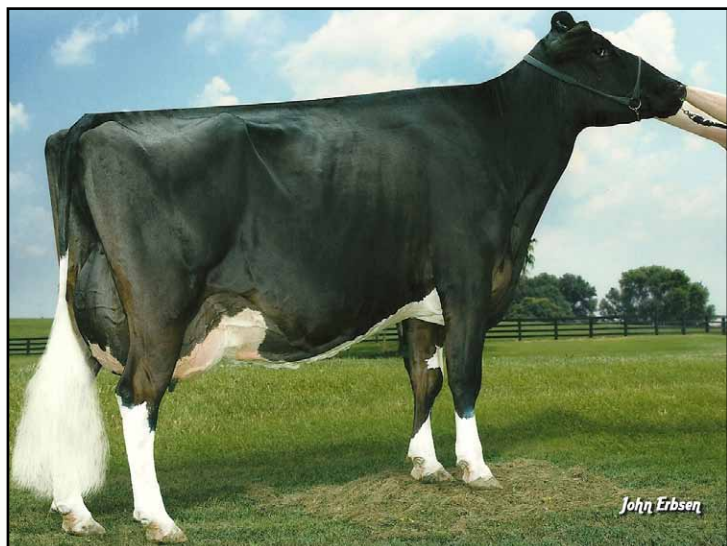
6-02 2x 365d 26755 4.2 1134

**Arlite Posch EX-92 GMD**

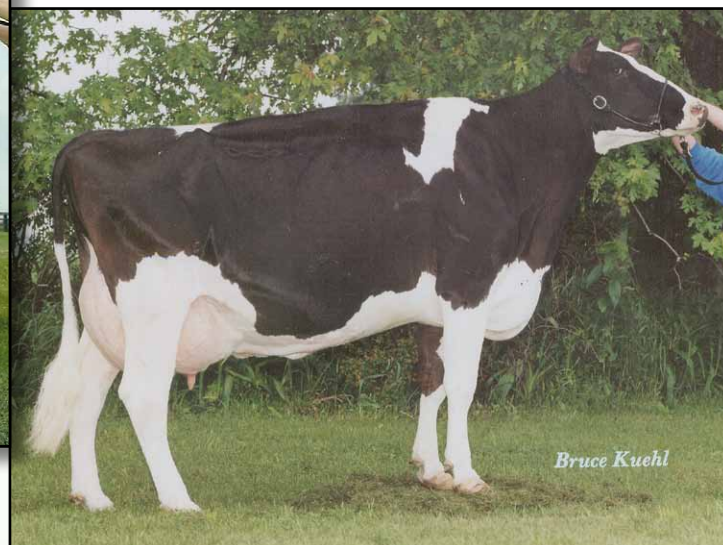
5-03 2x 365d 21193 3.7 779

**Audrey Posch EX-93 GMD**

14-2 2x 365d 25572 3.7 948



**GBM MR SAM BLACKCAT-ET EX-90 EX-MS**  
DAM OF LOT 40



**GBM VAL BLACKSTAR JEAN-ET EX-94 3E GMD**  
2ND DAM OF LOT 40



**Holstein Plaza Contacts:**

Steve Mower +1 240-520-5906  
Jennifer Dingbaum +1 320-250-2412

**Toc-Farm Goldsun-ET**

59330032335ITA \*TV \*TL  
PTA -397M -2F +4P 83%R 12/11  
PTA +2.3PL 2.77SCS -.2DPR 7%DCE  
PTA +3.83T +4.22UDC +2.27FLC 73%R  
GTPI +1905G

**GBM Mr Sam Blackcat-ET**

137882403 Excellent-90 EX-MS @ 5-09  
3-10 2x 365d 30710 4.1 1253 3.2 990  
2-04 2x 365d 20880 4.3 897 3.3 681

**FIVE #1 EMBRYOS**

• *Worldwide Export Available*

**Braedale Goldwyn**

10705608C GP-CAN EX'05 GM 8/08 \*TV \*TL  
PTA +194M +36F +18P 99%R 12/11  
PTA +3.09T +2.61UDC +2.70FLC  
GTPI +1988G

**Toc-Farm Allen Amyly**

ITA53000628285 Excellent-95 2E  
7-00 2x 305d 33570 5.4 1819 3.6 1206  
• *All-World Cow 2008*

**Regancrest-MR Drham Sam-ET**

207184639 GM 8/06 \*TR \*TV \*TL  
PTA -5M +23F +5P 99%R 12/11  
PTA +1.49T +1.24UDC +1.78FLC  
GTPI +1526G

**GBM Val Blackstar Jean-ET**

15285384 Excellent-94 3E GMD  
8-05 2x 365d 37180 3.9 1458 3.0 1119  
5-05 2x 365d 33320 3.5 1174 3.1 1021  
7-02 2x 365d 28440 3.7 1050 3.3 941  
Life: 3127d 238190 4.1 9734 3.4 8000

*Maternal sisters to Mr Sam Blackcat*

**GBM Durham Bstar Josie-ET EX-92**  
5-08 2x 365d 34750 4.2 1447 2.9 994  
**GBM Durham Dellia Jean EX-91**  
3-10 2x 365d 39520 4.1 1603 2.9 1154  
Life: 1300d 122100 4.2 5088 2.9 3576  
**GBM Durham Bstar Jayla EX-90 EX-MS**  
4-11 2x 365d 33851 4.3 1449 3.0 1008  
**GBM Linjet Janet EX-91 EX-MS**  
**GBM Jed Jaylene EX-90 EX-MS**  
5-02 2x 365d 25575 3.8 966 3.0 768  
**GBM Durham B-Star Jerri EX-90-CAN**  
4-01 2x 365d 29246 4.2 1230 3.7 1082  
**GBM Outside Cora Cola EX-90**  
**GBM Charles Janelle EX-93 EX-MS**  
*dam of*  
**GBM Durham BC Annabell EX-90 DOM**

*3rd thru 5th Dams*

**GBM Valiant Janice EX-92 2E DOM**  
5-09 2x 365d 30860 3.5 1080 3.3 1007  
Life: 2100d 126200 3.5 4437 3.4 4235

**Sylvan-Dell M C Janice EX-91 2E DOM**  
6-03 2x 314d 29600 3.9 1152

**Sylvan-Dell Atlas Jill EX-90 2E**  
4-06 2x 305d 20820 3.5 717



**REGANCREST S LIZETT-ET EX-90 EX-MS**  
DAM OF LOT 41

**41****Holstein Plaza Contacts:**

Steve Mower +1 240-520-5906

Jennifer Dingbaum +1 320-250-2412

**Toc-Farm Goldsun-ET**

59330032335ITA \*TV \*TL

PTA -397M -2F +4P 83%R 12/11

PTA +2.3PL 2.77SCS -.2DPR 7%DCE

PTA +3.83T +4.22UDC +2.27FLC 73%R

GTPI +1905G

**Regancrest S Lizett-ET**

62496977 Excellent-90 EX-MS

GTPI+1989 +355M +24F +20P +2.18T

4-01 2x 364d 26980 3.9 1047 3.3 886

1-11 2x 365d 23600 4.0 933 3.4 799

3-02 2x 297d 20380 4.0 821 3.2 655

**FIVE #1 EMBRYOS**

- *Worldwide Export Available*

**Braedale Goldwyn**

10705608C GP-CAN EX'05 GM 8/08 \*TV \*TL

PTA +194M +36F +18P 99%R 12/11

PTA +3.09T +2.61UDC +2.70FLC

GTPI +1988G

**Toc-Farm Allen Amyly**

ITA53000628285 Excellent-95 2E

7-00 2x 305d 33570 5.4 1819 3.6 1206

- *All-World Cow 2008*

**Picston Shottle-ET**

598172GBR EX-95-GBR GM 8/08 \*TV \*TL

PTA +1211M +58F +34P 99%R 12/11

PTA +2.87T +2.11UDC +1.90FLC

GTPI +2039G

**Teramis Durham Lifesaver-TW**

134971339 Excellent-90 EX-MS @ 3-09

2-05 2x 365d 29340 4.2 1237 3.5 1023

3-08 2x 329d 28690 3.7 1063 3.4 985

**4th & 5th Dams****Teramis Blackstar Life EX-92 EEEEE 2E**

4-06 2x 365d 27230 3.9 1056 3.0 807

Life: 1754d 111059 3.7 4159 3.1 3415

**Teramis Chief Mark Loon VG-85**

4-11 2x 305d 25430 3.3 851 3.0 761

**Regancrest Elton Durham-ET**

2250783 EX-90 GM 8/01 \*TR \*CV \*TL

PTA -224M -32F +7P 99%R 12/11

PTA +2.48T +2.31UDC +2.21FLC

GTPI +1602G

**Teramis Sexation Lady**

17008029 Excellent-91 EX-MS 3E

10-0 2x 365d 26410 3.6 952 3.1 831

4-05 2x 365d 25200 3.8 946 3.2 812

Life: 3407d 198500 3.7 7297 3.3 6621



**APPLOUIS MICHAEL ATLEE-ET VG-86-2YR 88-MS**  
**DAM OF LOT 42**



**APPLOUIS TOYSTORY ANNIE-ET VG-86 VG-MS**  
**2ND DAM OF LOT 42**

**42**

**SIX #1 EMBRYOS**

• Domestic Shipment Only

**Holstein Plaza Contacts:**

Steve Mower +1 240-520-5906  
Jennifer Dingbaum +1 320-250-2412

**Regancrest-GV S Bradnick-ET**

66625940 \*TR \*TV \*TL \*TY \*TD  
PTA +1242M +25F +36P 79R 12/11  
PTA +2.8PL 2.98SCS -2.7DPR 6%DCE  
PTA +4.98T +3.94UDC +4.03FLC 75R 12/11  
GTPI +2128G

**Applouis Michael Atlee-ET**

139750452 Very Good-86-2YR 88-MS  
GTPI+1923 +2.76T +2.84UDC +1.80FLC  
2-04 2x 193d 16556 3.7 605 3.3 540 inc.  
• Dev +6713M +169F +247P over herdmates

**Gen-Mark Stmatic Sanchez**

134422312 Excellent-94 \*TR \*TV \*TL \*TD  
PTA +771M +5F +19P 99%R 12/11  
PTA +3.08T +2.24UDC +2.80FLC  
GTPI +1744G

**Regancrest Brea-ET**

62496852 Very Good-88 DOM  
2-02 2x 365d 31960 3.6 1164 3.0 966

**Lutz-Brookview Michael-ET**

133389654 Excellent-90 \*TR \*TV \*TL \*TD  
PTA +343M +41F +12P 99%R 12/11  
PTA +1.17T +0.94UDC +1.48FLC 97%R  
GTPI +1764G

**Applouis Toystory Annie-ET**

62563256 Very Good-86 VG-MS @ 2-05  
GTPI+1876 +669M +11F +31P +2.57T  
2-02 3x 365d 28530 3.5 986 3.4 966

**3rd thru 7th Dams**

**La-Foster Adam Arlene-ET**  
VG-86 VVVVVV DOM  
2-06 2x 365d 30120 3.5 1046 3.6 1073

**MD-Delight Durham Atlee-ET**

EX-92 EEEEE DOM  
3-11 2x 365d 38290 5.5 2091 3.1 1177  
2-08 2x 365d 32520 4.3 1400 3.3 1074  
• All-American Sr 3-Yr-Old Cow 2005  
• Res Int Champ, International Show 2005

**MD -Delight Strm Amberlee-ET**

VG-88 DOM  
2-02 2x 365d 26170 3.7 969 3.2 835

**Ms Kingstead Chief Adeen-ET EX-94 2E DOM**

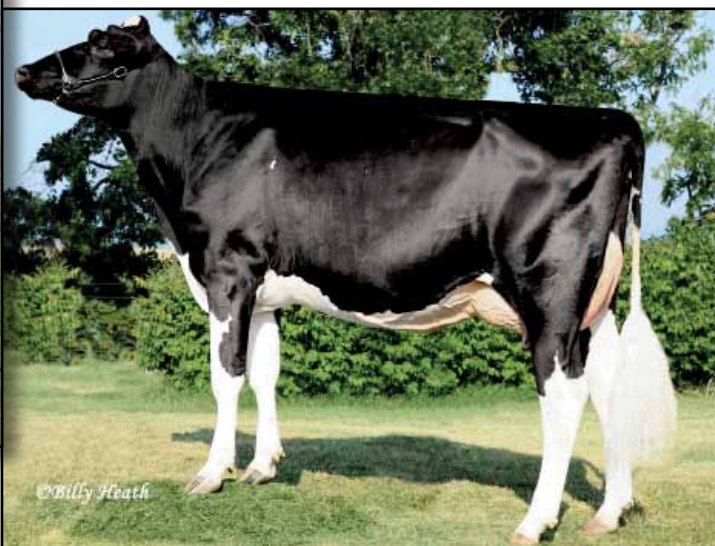
3-05 2x 310d 30180 4.0 1209 3.4 1020  
Life: 1382d 100760 4.0 4010 3.4 3458  
• 2x Member All-American Produce  
• Nom All-American Jr 3-Yr Old  
• Nom All-American 4-Yr Old  
• Dam of 16 VG and 11 EX Offspring

**C Aitkenbrae Starbuck Ada EX-94 2E DOM**

13-8 2x 365d 25150 3.0 764 3.2 796  
2-05 2x 362d 25000 3.6 908 3.2 798  
• All-American Produce of Dam 2000  
• 1st Eastern Nat'l 3-Yr Old & Grand Ch 1990



**GLORYLAND-LB LINETTE RAE-ET VG-89 EX-MS @ 3-02**  
MATERNAL SISTER TO LOT 43



**GLORYLAND LAKOTA RAE-ET VG-88 EX-MS @ 3-02**  
2ND DAM OF LOT 43

**43**

**FOUR #1 EMBRYOS**

• *Worldwide Export Available*

**Holstein Plaza Contacts:**

Steve Mower +1 240-520-5906  
Jennifer Dingbaum +1 320-250-2412

**Gillette Windbrook-ETS**

7816429C EX-95-CAN EX'10 \*TV \*TL \*TY  
PTA +645M +53F +25P 90%R 12/11  
PTA +.0DPR 3.03SCS -1.2DPR  
PTA +2.53T +2.01UDC +2.43FLC 84%R  
GTPI +1838G

**Kota-Rae Sanchez 5-ET**

66050564 Born: September 2, 2009

*Maternal sister to Sanchez 5*

**Gloryland-LB Linette Rae-ET VG-89 EX-MS**

GTPI+2284 +3.65T +3.54UDC +2.50FLC

- #1 GTPI Goldwyn on the Locator List
- #20 GTPI Female on the Locator List

**Gillette Brilea F B I-ET**

8209524C EX-94-CAN EX'05 \*TV \*TL \*TY  
PTA +1464M +45F +35P 99%R 12/11  
PTA +1.93T +1.46UDC +1.80FLC  
GTPI +1845G

**Gillette Blitz 2nd Wind-ET**

7352248C Very Good-88-CAN 34\*  
2-02 3x 365d 39096 3.6 1422 3.0 1182

**Gen-Mark Stmatic Sanchez**

134422312 Excellent-94 \*TR \*TV \*TL \*TD  
PTA +771M +5F +19P 99%R 12/11  
PTA +3.08T +2.24UDC +2.80FLC  
GTPI +1744G

**Gloryland Lakota Rae-ET**

137410723 Very Good-88 EX-MS @ 3-02  
GTPI+2099 +2.96T +3.01UDC +1.35FLC  
2-03 2x 365d 22850 3.8 857 3.3 751  
*sired by: Ocean-View Zenith-TW-ET*

**3rd thru 10th Dams**

**Gloryland Lana Rae EX-94 2E DOM**  
5-06 2x 365d 29011 4.0 1159 3.2 938  
Life: 2113d 129620 3.7 4768 3.4 4343  
• 16 Excellent daughters all with EX-MS!

**Scientific Liza Rae-ET EX-90**

4-09 2x 365d 26710 2.9 786 3.3 878

**C Hanoverhill Tony Rae**

EX-96 3E GMD DOM  
6-11 2x 365d 40220 4.1 1661 3.3 1331  
Life: 2247d 166396 4.1 6904 3.4 5612  
• *Grand Champion Western National 1993*

**C Hanoverhill TT Roxette-ET EX-94 2E GMD**

10-0 3x 365d 35040 4.3 1519 3.0 1063  
Life: 2104d 164789 4.1 6760 3.1 3587

**Mil-R-Mor Roxette EX-CAN 30\***

7-01 2x 365d 24531 4.7 1153  
Life (6 Lacs): 121418 4.7 5728

**C Glenridge Citation Roxy EX-97 4E GMD**

10-1 2x 365d 25280 4.2 1060  
Life: 3620d 209784 4.5 9471  
• *Queen of the Breed I and II*

**C Norton Court Model Vee EX-90**

6-06 2x 365d 22483 3.9 875  
Life: 4183d 218629 3.9 8581  
• *All-American Produce of Dam 1977, '78, '79*

**Norton Court Reflection Vale VG-85-CAN 5\***

8-11 2x 332d 20631 3.7 765  
Life (14 Lacs): 249583 3.7 9295



**GBM SHOTTLE AFRICA-ET EX-90 EX-MS DOM**  
**2ND DAM OF LOT 44**



**GBM DURHAM BC ANNABELL EX-90 EX-MS DOM**  
**3RD DAM OF LOT 44**



**FIVE #1 EMBRYOS**

• *Worldwide Export Available*

**Holstein Plaza Contacts:**

Steve Mower +1 240-520-5906  
Jennifer Dingbaum +1 320-250-2412

**Mr Chassity Gold Chip-ET**

140145553 Excellent-90 \*TR \*TV \*TL \*TD  
PTA +1034M +48F +26P 78%R 12/11  
PTA +4.8PL 2.47SCS -.4DPR  
PTA +4.23T +3.19UDC +3.47FLC 75%R  
GTPI +2279G

**GBM Super Avery-ET**

140865260 Born: July 15, 2010  
GTPI+1990 +1229M +30F +35P +2.42T

**Braedale Goldwyn**

10705608C GP-CAN EX'05 GM 8/08 \*TV \*TL  
PTA +194M +36F +18P 99%R 12/11  
PTA +3.09T +2.61UDC +2.70FLC  
GTPI +1988G

**Regancrest S Chassity-ET**

62496899 Excellent-92 DOM  
3-10 2x 365d 42280 4.3 1798 2.7 1150

**Charlesdale Superstition-ET**

62065919 \*TV \*TL  
PTA +1731M +32F +52P 93%R 12/11  
PTA +2.06T +2.02UDC +.72FLC  
GTPI +2201G

**GBM Shottle Africa-ET**

138276212 Excellent-90 EX-MS DOM  
IM GTPI+1867 +598M +42F +22P +3.29T  
2-04 2x 365d 40420 4.5 1824 3.1 1236  
• 7th generation Excellent!  
• Observer daughters GTPI+2297 & +2284G

**4th thru 8th Dams**

**GBM Charles Janelle** EX-93 EX-MS 2E DOM  
6-03 2x 365d 31640 4.6 1471 3.3 1054  
Life: 2347d 137890 4.8 6645 3.6 4953  
**GBM Val Blackstar Jean-ET** EX-94 3E GMD  
8-05 2x 365d 37180 3.9 1458 3.0 1119  
Life: 3127d 238190 4.1 9734 3.4 8000  
**GBM Valiant Janice** EX-92 2E DOM  
5-09 2x 365d 30860 3.5 1080 3.1 948  
Life: 2100d 126200 3.5 4437 3.2 3996  
**Sylvan-Dell M C Janice** EX-91 2E DOM  
6-03 2x 314d 29600 3.9 1152  
**Sylvan-Dell Atlas Jill** EX-90 2E  
4-06 2x 305d 20820 3.5 717

**Picston Shottle-ET**

598172GBR EX-95-GBR GM 8/08 \*TV \*TL  
PTA +1211M +58F +34P 99%R 12/11  
PTA +2.87T +2.11UDC +1.90FLC  
GTPI +2039G

**GBM Durham BC Annabell**

132637576 Excellent-90 EX-MS DOM  
2-03 2x 365d 40670 4.1 1673 3.0 1202  
3-06 2x 365d 40050 4.2 1683 3.0 1201  
Life: 1449d 118720 4.4 5253 3.3 3961  
• 8 Excellent and 23 Very Good daughters



CS-REDVUE SHOTTLE CLAR-ET \*RC VG-85-2YR  
DAM OF LOT 45



MD-VALLEYVUE GOLD CANDY-ET \*RC EX-91  
2ND DAM OF LOT 45

**45**

**Holstein Plaza Contacts:**

Steve Mower +1 240-520-5906  
Jennifer Dingbaum +1 320-250-2412

**Lookout P Redburst-ET \*RC**

106030980C  
PTA +329M +14F +27P 76%R 12/11  
PTA +4.3PL +416NM\$ 2.88SCS +0.6DPR  
PTA +3.47T +3.32UDC +3.24FLC 72%R  
GTPI +2092G

**CS-Redvue Shottle Clar-ET \*RC**

68991054 Very Good-85 VG-MS @ 2-04  
GTPI+1986 +2.98T +2.64UDC +2.08FLC

**FOUR #1 EMBRYOS**

• *Worldwide Export Available*

**Scientific Destry-ET**

138122625 Very Good-87 \*RC \*TV \*TL  
PTA -545M +0F +7P 95%R 12/11  
PTA +3.13T +2.90UDC +2.34FLC  
GTPI +1977G

**Regancrest MB Breyell-ET**

63606863 Very Good-87-2YR-CAN  
2-03 2x 365d 31876 3.1 994 3.1 992

**Picston Shottle-ET**

598172GBR EX-95-GBR GM 8/08 \*TV \*TL  
PTA +1211M +58F +34P 99%R 12/11  
PTA +2.87T +2.11UDC +1.90FLC  
GTPI +2039G

**MD-Valleyvue Gold Candy-ET \*RC**

137603334 Excellent-91 EX-MS @ 4-07  
2-02 2x 365d 27270 3.8 1026 3.1 839  
3-09 2x 365d 26460 4.4 1164 3.3 866

**3rd thru 12th Dam**

**MD-Valleyvue Storm Clar-Red**

EX-92 EX-MS 2E  
4-04 2x 305d 30970 4.6 1431 3.1 964  
Life: 1747d 132710 4.6 6064 3.1 4148

**OConnors Monet Clara-Red-ET EX-92**

5-09 2x 365d 40700 3.0 1236 3.1 1256  
Life: 2657d 223450 3.4 7654 3.1 6836

**Scientific Cherry Rae-Red VG-86 5\***

6-05 2x 365d 36303 4.8 1739 3.5 1263

**Scientific Jubilant Rae-ET EX-90 DOM**

5-11 2x 365d 38880 4.1 1608 3.6 1403  
Life: 1394d 117590 4.0 4707 3.6 4242

**C Hanoverhill Tony Rae**

EX-96 3E GMD DOM  
6-11 2x 365d 40220 4.1 1661 3.3 1331  
Life: 2247d 166396 4.1 6904 3.4 5612

• *Grand Champion Western National 1993*

**C Hanoverhill TT Roxette-ET EX-94 2E GMD**

10-0 3x 365d 35040 4.3 1519 3.0 1063  
Life: 2104d 164789 4.1 6760 3.1 3587

**Mil-R-Mor Roxette EX-CAN 30\***

7-01 2x 365d 24531 4.7 1153  
Life (6 Lacs): 121418 4.7 5728

**C Glenridge Citation Roxy EX-97 4E GMD**

10-1 2x 365d 25280 4.2 1060  
Life: 3620d 209784 4.5 9471

• *Queen of the Breed I and II*

**C Norton Court Model Vee EX-90**

6-06 2x 365d 22483 3.9 875  
Life: 4183d 218629 3.9 8581

• *All-American Produce of Dam 1977, '78, '79*

**Norton Court Reflection Vale VG-85-CAN 5\***

8-11 2x 332d 20631 3.7 765  
Life (14 Lacs): 249583 3.7 9295



**BO-IRISH-RN SUPER BARBI-ET**  
DAM OF LOT 46



**REGANCREST GOLD BRETТА-ET VG-88 DOM**  
2ND DAM OF LOT 46

**46**

**FOUR #1 EMBRYOS**

• Domestic Shipment Only

**Holstein Plaza Contacts:**

Steve Mower +1 240-520-5906  
Jennifer Dingbaum +1 320-250-2412

**Mountfield SSI Dcy Mogul-ET**

840M003006972816 \*TR \*TV \*TL \*TY \*TD  
PTA +1469M +87F +52P 77%R 12/11  
PTA +6.9PL +897NM\$ 2.67SCS +0.0DPR  
PTA +3.55T +3.80UDC +3.23FLC 73%R  
GTPI +2552G

**Bo-Irish-Rn Super Barbi-ET**

68711458 Born: June 26, 2010  
GTPI+2116 +1261M +54F +42P +3.11T

**Coyne-Farms Dorcy-ET**

139005002 \*BY \*TV \*TL  
PTA +1344M +46F +38P 78%R 12/11  
PTA +3.23T +3.62UDC +2.67FLC  
GTPI +2284G

**Mountfield Marsh Maxine-ET**

62784081 Very Good-88 EX-MS DOM  
2-03 2x 159d 14324 4.3 611 3.2 454

**Charlesdale Superstition-ET**

62065919 \*TV \*TL  
PTA +1731M +32F +52P 93%R 12/11  
PTA +2.06T +2.02UDC +.72FLC  
GTPI +2201G

**Regancrest Gold Bretta-ET**

62496942 Very Good-88 VG-MS DOM  
GTPI+2144 +667M +52F +45P +3.67T  
2-01 3x 365d 34610 4.8 1676 3.8 1314  
Dam of  
**Dream-Prairie Shadow Boxer** GTPI+2110

**3rd thru 10th Dams**

**Regancrest Throne Brandi-ET VG-86 GMD**

2-03 2x 365d 33010 3.5 1140 3.5 1154

**Regancrest-PR Barbie-ET**

EX-92 EEEEE GMD DOM

2-06 2x 365d 31690 3.9 1237 3.1 990

• HM All-American Junior 3-Yr Old 2004

• Former #1 Type Cow

**Regancrest Juror Brina-ET EX-92 GMD**

4-04 2x 365d 40640 3.6 1478 2.8 1140

• Member Nom AA Best 3 Females 2000

• Res Grand Champ Iowa State Show 2000

**Regancrest Aerostar Bert-ET**

EX-90 GMD DOM

5-02 2x 365d 37790 3.6 1357 3.0 1143

Life: 1305d 109350 3.7 4031 3.1 3350

**Regancrest Mark Chairman Bea**

EX-91 2E GMD

7-09 2x 365d 33630 3.8 1276 2.9 988

Life: 2036d 140130 4.1 5711 3.1 4350

**Regancrest Board Chairman Bea EX-90**

5-09 2x 365d 26010 4.1 1059 3.2 835

**Regancrest Apache Standout Bea VG-86**

4-10 2x 320d 19070 4.0 766

Life: 2432d 131940 3.6 4744

**Regancrest Standout Bertrand VG-85**

4-01 2x 355d 17460 3.3 571

# TERMS and CONDITIONS

## GENERAL:

- These terms are valid for all agreements made through this sale.
- The organization of the sale is done by Holstein Plaza, part of AMS Genetics International LLC.
- The party, which offers embryos in this sale will be named after this as the “seller” and the party who buys through this sale and gets the sale item assigned, will be hereinafter identified as the “buyer”.
- The organization will only act as an intermediary in the realization from a (purchase) agreement between seller and buyer.

## HOW DOES THE SALE WORK:

- All embryos sell with reasonable starting bid.
- The bid price is the per embryo price. If a lot has four embryos and the price is \$500.00 that means the lot price is \$2,000.00.
- When you place a bid, you agree to pay for the item if you're the winning bidder.
- All embryos are froze DT unless otherwise noted in catalog.
- All embryos are available for immediate shipment unless otherwise noted in catalog.
- There are two ways of placing a bid: internet ([www.holsteinplaza.com](http://www.holsteinplaza.com)) or via one of the listed Holstein Plaza contact persons.
- The bids are made in US dollars.
- When you place a bid, you enter the maximum amount you're willing to pay for the item. The other bidders and the sale organization will not be able to see your maximum bid. Through this Proxy bidding system, the Holstein Plaza auction system will increase your bid to the next lowest price when another user bids on the same item. The proxy bidding process continues until your maximum bid amount is reached or the auction ends. Every bidder is bound to his bid.
- The sale is using the popcorn bid system/5-minute rule (click [here](#) for more information on the popcorn bid system/5-minute rule). Until that moment bids will be accepted.
- All risks of the embryos are the responsibility of the buyer once the embryos are delivered to the buyer.
- The transportation of embryos from the seller to the buyer will take place as soon as possible after the sale, but not before complete payment as invoiced from AMS Genetics is received from the successful buyer.
- AMS Genetics will coordinate the paperwork and transfers with Holstein.

## PAYMENT:

- Payment for all purchases is due within ten days of sale.
- Sale invoices will be sent via e-mail or fax following the conclusion of the sale.
- Embryo release forms are issued once proper payment has been received and processed by AMS Genetics.
- Payment will not be released to the seller until AMS Genetics has received proper transfer paperwork.
- Holstein Plaza charges a buyer's commission of \$50 per embryo to include all necessary paperwork; note, this fee does not include shipping.
- International buyers are responsible for shipping the embryos. Buyers will be contacted after the sale about their wishes and requirements for exporting the embryos.
- All embryos needing international shipment will be charged a flat fee of \$150 per lot for export documentation.
- AMS Genetics can handle export and shipping. In case export is being done through AMS Genetics an additional \$50 export fee per embryo will be charged. This flat fee does not cover transport. Buyer should arrange shipping within 60 days of the ending sale date.

## EXCLUDING LIABILITY:

- The organization cannot be held responsible for errors on the internet site, sale catalog or in the advertisements.
- The organization cannot be held responsible for visual or non visual regardless the size or nature of such defect of the sold item.
- The organization does not take any responsibility for damage to persons or cases, which has arisen because of or connected to the sale.
- The cow indexes mentioned therein have been calculated or converted by the herdbook in the country the donor cow is housed in accordance with the current methods. All official pedigrees of sale animals can be seen.
- All frozen embryos are rated first class by official and registered ET veterinarians unless stated different on the website. In case embryos sold as first class after thawing turn out as class two or lower and not end in a pregnancy, the seller will be responsible for a refund, either in the form of an embryo with similar pedigree value or the purchase amount for the embryo. It is of vital importance that any claim is accompanied with an official statement in English from a recognized ET veterinarian. This should be sent to Holstein Plaza.
- Every bidder and seller is held to conform to the auction conditions. The act of bidding and consigning implicates knowledge and acceptance of these conditions.
- The organization can never be held responsible in case the embryos cannot be exported no matter what reason.