

Jetstream

Global Greatness Sale

An International Event

H
Y
A
T
T

Wednesday, November 12th, 2014

5:30 p.m. Hospitality • 6:30 p.m. Sale

Hyatt Regency Hotel • King St. West • Toronto, Ontario, Canada



jetstream
G E N E T I C S

Global Greatness Sale
an International Event

Welcome to the 2nd Edition of the Jetstream Global Greatness Sale!!

Dear Friends and Fellow Holstein Breeders,

It is a pleasure to be involved in this exciting week of five-star International Holstein events, at and surrounding the Royal Winter Fair in Toronto.

On behalf of Jetstream Genetics LLC, we extend the warmest of welcomes and thank you for attending our 2nd Global Greatness Sale. It is the consignors and buyers that make events like this possible. We share our gratitude with you for allowing us to select the best possible consignments from what you have bred and developed.

We have been overwhelmed by the support, attention, partnerships and friendships that have been extended since we meet last. It is an honor to be connected and associated with the leaders in our industry, whether at home or abroad.

Following on the tremendous reception we received in 2013, overwhelming sale achievements, and the successes they have delivered to their new owners we are even more passionate about the offerings this year.

Getting the best genetics just got easier. This tremendous offering of cattle is only the beginning of what the future holds. We are here to help fulfill your genetic dreams and goals. 2014 has guided us down many new roads and opportunities here at Jetstream Genetics with our expansion, genetic offerings and our network 2015 holds endless possibilities.

Sincerely,



Sales and Genetic Manager
Jetstream Genetics LLC



BUTLER AUCTIONS, LLC

2014 - Spring 2015 Sale Schedule

Destination Vegas SaleLas Vegas, Nevada.....Friday, December 12th, 2014

- Sale Held at the Bellagio Resort & Spa ~ 4:30 PM Hospitality ~ 5:30 PM Sale
- For reservations contact: Deidre's Travel Service • Phone: 816-444-0404

Destination Naples SaleNaples, Florida.....Friday, January 30th, 2015

- Sale Held at the Ritz Carlton Golf Resort. Join us Wed. Jan. 28th - Sunday, Feb. 1st!!
- For reservations contact: Deidre's Travel Service • Phone: 816-444-0404

Day at the Derby Sale.....Fasig Tipton Sales Pavillion, Lexington, KYFriday, May 1, 2015

- Co-Managed with Nabholz & Kueffner
- Friday, May 1st, 10-2 pm Horse Farm Tour ~ 3-5 pm Pre Sale Cattle Viewing/Social ~ 5 pm Sale ~ 8 pm KY Derby Horse Auction & Kentucky Hospitality (Bid & buy your Derby favorite)
- Saturday, May 2nd, Two options to shape your Derby Day Experience, attend the Derby at Churchill Downs or watch from Keeneland Racecourse

Spring Fling-ScottsdaleScottsdale, ArizonaTue., March 3rd - Wed. March 4th

- Baseball / Seminar / Sale. Enjoy your favorite teams playing in the Cactus League!
- Headquarters: The Westin Kierland Resort & Spa, Scottsdale, Arizona
- For reservations contact: Deidre's Travel Service • Phone: 816-444-0404

Party at the Park.....Chicago, Illinois..... Thursday, June 25, 2015

- Doors open at 10:30 AM, Hospitality starts at 10:30 AM, includes all you can eat & drink
- Sale Starts at 11:30 AM & Game Time 1:20 PM
- Chicago Cubs Vs. Los Angeles Dodgers
- Wrigley Rooftops, Sheffield Baseball Club, 3619 North Sheffield, Chicago, IL in the All Star Suite

• *Dates of other 2015 sales to be announced!*

For more information or to consign to any of these sales please contact:



BUTLER AUCTIONS, LLC

JEFF BUTLER, OWNER

2721 Dickens Dr. • Springfield, IL 62711

Phone: 217-341-2437 • Email: illinijet@aol.com

ED FELLERS, ASSISTING

Phone: 913-484-4121 • Email: edmondfellers@yahoo.com

Jetstream

Global Greatness Sale An International Event

Wednesday, November 12th, 2014

Hyatt Regency Hotel • 370 King St. West • Toronto, Ontario, Canada

Schedule of Events:

5:30 - 6:30 p.m. Pre-Sale Hospitality in the King Street West Social Restaurant

6:30 - 9:30 p.m. Sale in the King 1 Ballroom

SALES FORCE:

Jeff Butler 217-341-2437 illinijet@aol.com
Ed Fellers 913-484-4121 edmondfellers@yahoo.com
Chris Hill 202-255-7907 Salesflash@comcast.net
Roger Turner 608-770-0012 roger@jetstreamgenetics.com
Norman Nabholz 563-590-3204 nabholz@hawkeyetel.com
Bill Rauen 563-607-0694 Bill.Rauen@genusplc.com
Declan Patten 815-370-9544 declan.patten@butlerview.com
Ray LeBlanc 802-249-2155 overlookln@gmail.com
Simon Lalonde 514-239-5435 ferme.blondin@sympatico.ca
Brian Craswell 902-628-7537 Brian@crasdalefarms.com
Paul Trapp 608-332-0079 Paul.Trapp@genusplc.com
Joe Price 765-618-5479 butlerview@hotmail.com

SALE CLERK

Bruce Solomon • 913-685-8247

INSURANCE

Troy Alexander • 217-899-3426

SALE HEADQUARTERS:

Hyatt Regency Hotel • Phone: 416-343-1234
370 King St. West • Toronto, ON, Canada M5V 1J9
Call for Special RWF Rate of \$129/night and
mention Royal Winter Fair/Jetstream Sale

TRUCKING COORDINATOR:

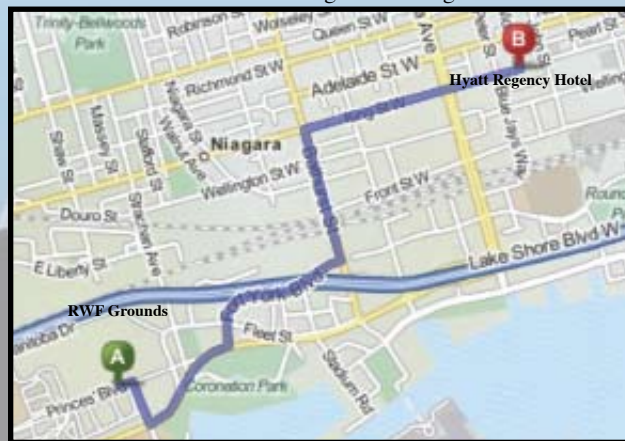
Joe Price : 765-618-5479 : butlerview@hotmail.com

CATALOG

Jennifer Larrabee • 315-269-7192 • 607-638-9506
jlarrabee@wildblue.net

DIRECTIONS: (FROM RWF TO HOTEL)

(Less than 2 miles apart) • Start out going East on Princes' Blvd.
Take the 1st right onto Newfoundland Dr. Turn left onto Lake
Shore Blvd. W/Hwy 2. Turn Left onto Fort York Blvd. Turn Left
onto Bathurst St. Turn Right onto King St. West.



• ANY LIVE LOTS SELLING WILL SELL ABSENTEE
WITH BUYER SATISFACTION GUARANTEED!
BUYER PAYS TRUCKING FROM SELLERS FARM •

• **SALE TO BE SOLD**
IN US DOLLARS •

Catalog will be online at...

www.holsteinworld.com

www.cowsmo.com

www.holsteininternational.com

www.holsteinplaza.com

www.dairyagendatoday.com

SALE MANAGEMENT:

BUTLER AUCTIONS, LLC

JEFF BUTLER, OWNER

2721 Dickens Dr. • Springfield, IL 62711

Phone: 217-341-2437

Email: illinijet@aol.com

ED FELLERS, ASSISTING

Phone: 913-484-4121

Email: edmondfellers@yahoo.com

ROGER TURNER

Office Phone: 855-4jetstream

Cell: 608-770-0012

Email: roger@jetstreamgenetics.com





***Higherransom Jives Glink
(GP-84)***

Maternal Sister to the Dam of Lot 1



Pineyvale Baxter Glint-ET (EX-90)
2nd Dam of Lot 1

1 Higherransom Racer Gina-ET

Born 8/19/2014 Reg. 840 3124929654 99%RHA

GTPI +2631 / GLPI +3349 / DGV +3495

PTA +1497M +66F +65P 10/2014

PTA +983NM +8.1PL 2.52SCS +2.0DPR

PTA +3.03T +2.97UDC +3.11FLC 69%R 10/2014

CAN GPA +1582M +63P +77P +12C +14MS +10FL

• **Unique Outcross Pedigree!**

Higher-Ransom Holsteins
28 Coons Rd
Valley Falls, NY 12185
518/753-9951

Terms: Cash unless prior arrangements are made specifically with seller and sale management is advised of these special terms in advance of the sale.

CLEAR-ECHO LEXOR RACER-ET

71974211 99%RHA TV TL TY TD

GP-82 ++++ 1-09 GTPI +2421

PTA +1462M +59F +58P 74%R 8/2014

PTA +812NM +.02%F +.06%P100%US

PTA +5.7PL 2.60SCS +1.7DPR 4.9%DCE

PTA +2.80T +2.74UDC +1.84FLC 73%R 8/2014

HIGHERRANSOM MOGUL GOGO-ET

70561728

VG-86 VE+V+ 2-04 GTPI +2316

PTA +1248M +81F +51P 75%R 8/2014

PTA +733NM +.13%F +.05%P

PTA +4.4PL 2.78SCS +.1DPR 5.9%DCE

PTA +2.76T +2.43UDC +2.78FLC 73%R 8/2014

1-11 3 146 12770 4.1 523 3.3 421 (Inc)

• 9th Generation VG or EX!

GENERAVATIONS LEXOR-ET 11098658C

TV TL

VG-85-1Y CAN GTPI +2203

CLEAR-ECHO OBSERVER 2280-ET

68669880 99%RHA TL

GP-84 VV+++ 2-11 GTPI +2127

2-01 3 365 27890 3.6 1015 3.3 917

MOUNTFIELD SSI DCY MOGUL-ET 840

3006972816 TR TV TL TY TD

GTPI +2467

PINEYVALE BAXTER GLINT-ET 139158250

EX-90 EEEEE 5-04 GTPI +2083

PTA +773M +77F +24P 82%R 8/2014

PTA +568NM +.18%F +.00%P

PTA +4.2PL 2.70SCS -.5DPR 6.7%DCE

PTA +2.39T +1.61UDC +3.30FLC 82%R 8/2014

5-02 3 365 36290 4.5 1626 3.3 1200

2-01 3 365 28020 4.4 1240 3.3 925

3rd Dam: Mar-Bil Bos Iron Gretel-ET
(EX-91 EEEVEE DOM)

3-05 2 365 31450 5.2 1643 3.4 1080

LIFE 1477 105080 4.7 4978 3.4 3616

4th Dam: Mar-Bil Oscar Genoa-ET
(EX-92 EEEEE GMD DOM)

6-05 2 365 33904 4.3 1451 3.2 1071

LIFE 1573 103550 4.1 4197 3.4 3506

5th Dam: Mar-Bil Cleitus Grace-ET
(VG-88 VEEVV GMD DOM)

5-07 3 365 40490 3.7 1503 3.2 1310

LIFE 2909 226780 3.8 8643 3.4 7805

6th Dam: Darling-Farm Bell Ginny
(VG-86 GMD DOM)

3-03 2 365 32840 4.1 1357 3.6 1175

Dam of Geoffry (EX-94 GM)

7th Dam: Sil-Crest Jupiter Gina (VG-86)

4-05 2 365 25290 4.0 1008 3.2 810

8th Dam: Sil-Crest Elevation Ginger
(VG-88)

6-10 2 305 21180 4.1 69 2.7 582

LIFE 2259 138110 3.6 4960 2.8 3885

9th Dam: VG-85 Jewel

10th Dam: Over 129,000 Lifetime



Pine-Tree Bella-ET
Dam of Lot 2

2

Peak Bella Hal 822-ET

Born 6/3/2014 Reg. 840 3125475778 100%RHA

13K GTPI +2609 / GLPI +3402 / DGV +3516

PTA +1104M +68F +53P 71%R 8/2014

PTA +892NM +.10%F +.07%P

PTA +6.6PL 2.52SCS +2.8DPR 5.2%DCE

PTA +3.54T +3.53UDC +2.81FLC 68%R 8/2014

CAN GPA +814M +70F +56P +17C +18MS +14FL

• The #2 GTPI Halogen Female in the Breed on the Aug. run!

Terms: Cash unless prior arrangements are made specifically with seller and sale management is advised of these special terms in advance of the sale.

COOKIECUTTER PETRON HALOGEN
840 8710387 TV TL TY TD

GTPI +2487

PTA +958M +54F +37P 75%R 8/2014

PTA +882NM +.08%F +.03%P 100%US

PTA +7.9PL 2.36SCS +3.7DPR 4.8%DCE

PTA +2.88T +3.06UDC +1.21FLC 73%R 8/2014

PINE-TREE BELLA-ET 71859232
TV TL TY TD

GTPI +2562

PTA +1808M +80F +63P 75%R 8/2014

PTA +913NM +.05%F +.03%P

PTA +6.4PL 2.66SCS +1.5DPR 4.7%DCE

PTA +2.90T +3.28UDC +2.40FLC 72%R 8/2014

• *Bella has 4/6 offspring over 2500 GTPI!*

• *Due 5-20-15. Long squared bodied with loads of potential.*

WELCOME SUPER PETRONE-ET
69207641 TR TV TL TY TD

GTPI +2266

PTA +2.28T +2.19UDC +1.51FLC 77%R 8/2014

COOKIECUTTER MOM HALO-ET
840 3007069733

VG-88 VV+VE DOM 2-09 50K GTPI +2301

2-00 3 365 35410 5.2 1832 3.5 1241

MOUNTFIELD SSI DCY MOGUL-ET 840
3006972816 TR TV TL TY TD

GTPI +2394

PTA +1643M +90F +57P +853NM 84%R 8/2014

PINE-TREE 4128 PLANT 4729 69804493

VG-86 V+GVV 2-09 GTPI +2128

PTA +1392M +54F +47P 80%R 8/2014

PTA +616NM +.01%F +.02%P

PTA +4.8PL 2.67SCS +.8DPR 6.0%DCE

PTA +1.76T +1.79UDC +.63FLC 77%R 8/2014

2-04 3 305 29770 4.1 1223 3.3 987

PEAK Genetics

Watertown, WI 53094

Kyle Demmer 563/451-5376

Jon Schefers 320/260-5436

Mike Menendez 845/598-8499

3rd Dam: Pine-Tree Oman Bubbles-ET

(VG-85)

2-09 3 347 30690 4.31321 3.3 1016

4th Dam: Mtn-View-S Pt Bubbles-ET

(VG-85)

1-10 3 220 19210 3.6 688 2.9 565

5th Dam: Mayerlane Rud Bubbles-ET

(VG-86 GMD DOM)

1-11 2 365 35990 3.7 1343 3.0 1068

6th Dam: Plackes-SVF Luke Betsy-ET

(2E-94 EEEEE GMD DOM)

7-05 3 365 45210 3.6 1616 2.9 1307

LIFE 1431 147520 3.4 5077 3.0 4479

7th Dam: Plackes-SVF Becky-ET

(EX-90 EEEVV DOM)

4-08 3 365 33130 3.6 1194 2.9 947

8th Dam: Sheyland Jesse Robbie-ET

(VG-87 DOM)

4-09 2 365 27860 3.3 931 3.5 973

9th Dam: Star-Bright-Vu S-W-D Roxann-ET

(EX-90)

2-06 2 365 29820 4.1 1233 3.3 984

10th Dam: Deer-Brook Gilmore Rag Apple

(2E-93 GMD DOM)

LIFE 2757 155330 4.2 6533

11th Dam: Deer-Brook Gilmore Mollie

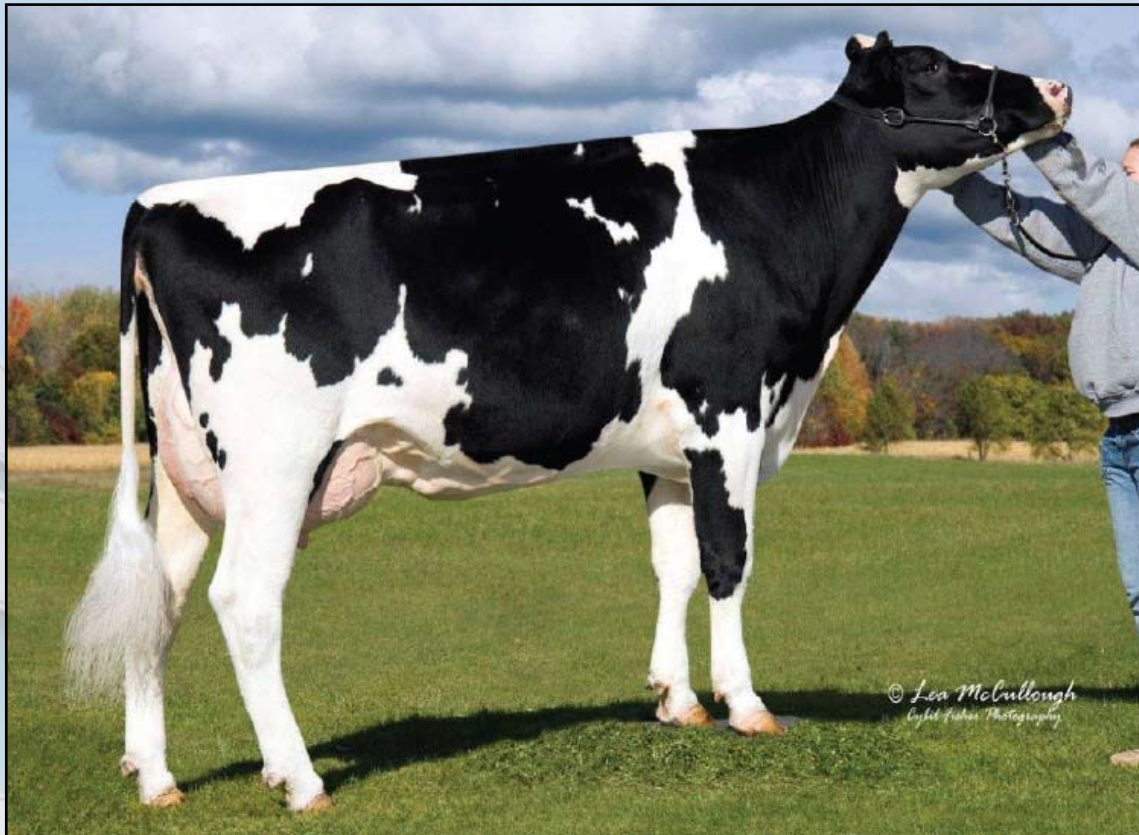
(VG-88 GMD DOM)

LIFE 2300 163980 3.7 6019

12th Dam: Deer-Brook Gilmore Milly

(VG-87 GMD) LIFE 183582 3.4 6311

13th Dam: VG-85



**L-L-M-Dairy J Stream Procky (VG-87 DOM 2y)
2nd Dam of Lot 3**

3

Siemers Olympian Phawn-ET *RC

**Siemers Holstein Farms, Inc.
14421 Mineral Springs Rd
Newton, WI 53063-9740
920/693-3600**

Born 6/16/2014 Reg. 840 3123738264 99%RHA

13K GTPI +2554 / GLPI +3235 / DGV +3329

PTA +1602M +63F +66P 71%R 8/2014

PTA +889NM +.02%F +.06%P

PTA +7.0PL 2.66SCS +1.8DPR 3.8%DCE

PTA +2.93T +3.07UDC +2.05FLC 68%R 8/2014

CAN GPA +1718M +63F +77P +12C +12MS

• The #2 GTPI *RC in the World!

Terms: Cash unless prior arrangements are made specifically with seller and sale management is advised of these special terms in advance of the sale.

LADYS-MANOR OLYMPIAN 71592946

RC TV TL TY TD

50K GTPI +2459

PTA +1437M +38F +53P 75%R 8/2014

PTA +767NM -.06%F +.04%P 100%US

PTA +6.0PL 2.53SCS +2.5DPR 5.8%DCE

PTA +3.05T +3.53UDC +2.28FLC 72%R 8/2014

L-L-M-DAIRY S S PHAWN-ET 71640144

99%RHA

50K GTPI +2369

PTA +1176M +68F +59P 74%R 8/2014

PTA +785NM +.09%F +.09%P

PTA +6.0PL 2.63SCS +1.1DPR 5.9%DCE

PTA +2.34T +2.21UDC +1.72FLC 73%R 8/2014

Her only milking sister:

L-L-M-Dairy Million Prize (VG-85 VG-87-MS)

2-03 2 365 26073 4.3 1126 3.1 811

Numero Uno son at Semex, +2465 GTPI!

HUNSBERGER ALCHEMY-ET 69080973

RC TV TL TY TD

GTPI +2184

LADYS-MANOR DORCY ODA 69547657 TY

VG-88 VEV+E 2-11 GTPI +2431

2-00 2 365 31930 4.1 1319 3.3 1054

SEAGULL-BAY SUPERSIRE-ET 69981349

TV TL TY TD

VG-87 VVVVV 3-07 GTPI +2444

L-L-M-DAIRY J STREAM PROCKY

64955263 TV TL TY 98%RHA

VG-87 VVVVVV DOM 2-09 GTPI +2065

PTA +836M +27F +37P 82%R 8/2014

PTA +520NM -.01%F +.04%P

PTA +4.8PL 2.83SCS +1.5DPR 6.8%DCE

PTA +1.99T +1.94UDC +2.01FLC 82%R 8/2014

1-11 2 365 32760 3.9 1262 3.4 1113

• She has sons and daughters genomic testing well above parent average

• Sons in A.I. and still being contracted

3rd Dam: L-L-M Dairy Die-Hd Peace

(VG 85 DOM)

2-05 2 365 32890 3.8 1261 3.2 1055

4th Dam: L-L-M-Dairy Rudolph Pilgrim

(EX-92 94-MS GMD DOM)

9-11 2 365 40250 3.7 1499 3.0 1208

LIFE 2813 235830 3.7 8802 3.1 7408

5th Dam: L-L-M-Dairy Prelude Prep-ET

(VG-86)

4-00 2 348 21950 4.4 974 3.4 736

6th Dam: L-L-M-Dairy Calypso Pandora

(VG-88 EX-MS DOM)

4-02 2 365 28050 3.4 962 3.0 851



Lookout Pesce Mag Sarah-Red-ET
(GP-84-2Y)
2nd Dam of Lot 4



K-Manor Sensational-Red-ET
Dam of Lot 4

4

IHG Mardi Sens 9020-ET *RC *PO

Maverick Global Genetics
& Callum Moscript
1710 BE 7750 S. Road
Chebanse, IL 60922
217/341-2437

Terms: Cash unless prior arrangements are made specifically with seller and sale management is advised of these special terms in advance of the sale.

Born 7/14/2014 Reg. 840 3125944542 100%RHA

GTPI +2450 / GLPI +3313 / DGV +3474

PTA +1323M +78F +53P 72%R 9/2014

PTA +852NM +.12%F +.05%P

PTA +7.0PL 2.78SCS +2.5DPR 5.9%DCE

PTA +2.43T +2.60UDC +1.80FLC 69%R 9/2014

CAN GPA +1465M +91F +62P +14C +15MS +10FL

• The #4 GTPI PO heifer in the WORLD and a Red Carrier!!

• Min. Starting Bid \$125,000

• Extreme DGV for Polled & Red Carrier, +3474 DGV!!!!

MR MOVIESTAR MARDI GRAS-ET
71494657 TV TL TY TD

GTPI +2480

PTA +1277M +80F +51P 75%R 8/2014

PTA +861NM +.13%F +.05%P 100%US

PTA +6.6PL 2.82SCS +2.5DPR 5.4%DCE

PTA +2.83T +3.07UDC +1.71FLC 73%R 8/2014

MOUNTFIELD SSI DCY MOGUL-ET 840
3006972816 TR TV TL TY TD

GTPI +2467

BROOKVIEW-E MOVIESTAR-ET

140301401

VG-86 VVV+V 3-00 GTPI +1907

2-07 2 365 31200 4.6 1440 3.4 1069

K-MANOR SENSATIONAL-RED-ET
72127427 PP

77K GTPI +2058

PTA +428M +38F +29P 73%R 8/2014

PTA +468NM +.08%F +.06%P

PTA +4.2PL 2.91SCS +.8DPR 6.7%DCE

PTA +2.64T +2.29UDC +2.59FLC 72%R 8/2014

• "One of the highest Red homozygous polled heifers in the World!"

TIGER-LILY LADD P-RED-ET 69405976
B/R PC TV TL TY TD

EX-91 EEVE 4-02 GTPI +2122

LOOKOUT PESCE MAG SARAH-RED-ET

107027828C PO

GP-84 VV+++ 2-06 GTPI +2010

• Topped the World Classic Sale at \$82,000!!

3rd Dam: Charpentier Mr Burns Si-Red-ET
(EX-92)

4-04 3 365 40010 4.1 1635 3.2 1284

2nd Sr. 3-Yr-Old Quebec Spring R&W 2012

3rd Int. Yrlg. Heifer Royal Winter Fair 2010

3rd Winter Calf Grand Nat'l Show 2009

4th Dam: Charpentier FBI Sierra

(CAN VG-89-5Y 2*)

5-00 2 365 53369 3.6 1938 3.2 1715

2nd 5-Year-Old Cookshire 2011

5th Dam: Gen-I-Beq Talent Spectra

(CAN VG-85-2Y 13*)

4-08 2 365 41204 3.9 1612 3.5 1448

LIFE 3 Lact. 122620 3.8 4643 3.5 4297

6th Dam: Glen Drummond Splendor

(CAN VG-86-2Y 37*)

4-10 2 314 26510 4.2 1124 3.2 840

• Dam of 7 EX & 22 VG Daughters

7th Dam: Glen Drummond Aero Flower

(CAN VG-88-3Y 18*)

8th Dam: Glen Drummond Shower-ET

(CAN EX 14*)

9th Dam: Glen Drummond SC Jo Beth

(CAN EX-2E 7*)

10th Dam: Glen Drummond Matt Beth

(CAN VG-85-3Y 4*)

11th Dam: Glen Drummond Marquis Beth

(CAN VG)

12th Dam: Ferglynn Rag Apple Berta

(CAN VG 3*)



Gold-N-Oaks S Marbella-ET (VG-89 EX-MS GMD DOM)
3rd Dam of Lot 5

5

Pen-Col SS Milly-ET *TD *TL

Born 10/7/2013 Reg. 72754130 99%RHA
 9K GTPI +2584

PTA +2530M +104F +88P 72%R 8/2014

PTA +934NM +.04%F +.04%P

PTA +4.9PL 2.79SCS -.2DPR 3.4%DCE

PTA +3.20T +2.04UDC +2.25FLC 72%R 8/2014

• **Extreme for Milk, Fat & Protein!!**

Pen-Col Farms
 PO Box 528
 Millville, PA 17846
 570/380-3456

Sells as a package with every pregnancy & transfer made prior to the sale. Buyer responsible for all flushing costs and live calf expenses through Tans Ova.

Terms: Cash unless prior arrangements are made specifically with seller and sale management is advised of these special terms in advance of the sale.

SEAGULL-BAY SUPERSIRE-ET
69981349 TV TL TY TD

VG-87 VVVV 3-07 GTPI +2444

PTA +2467M +112F +79P 77%R 8/2014

PTA +882NM +.08%F +.02%P 100%US

PTA +4.9PL 2.87SCS -.1DPR 4.6%DCE

PTA +2.40T +1.68UDC +1.17FLC 77%R 8/2014

PEN-COL BOOKEM MIA-ET 70609513
99%RHA

VG-87 VV+VV 2-01 GTPI +2277

PTA +1528M +47F +62P 78%R 8/2014

PTA +610NM -.03%F +.06%P

PTA +3.5PL 2.77SCS +.0DPR 4.0%DCE

PTA +3.30T +2.30UDC +2.31FLC 80%R 8/2014

• *Just Fresh and looks awesome!*

ROYLANE SOCRA ROBUST-ET 64966739
TR TV TL TD

VG-88 VVVV 3-03 GM GTPI +2347

PTA +1615M +103F +63P 99%R 8/2014

AMMON-PEACHEY SHAUNA-ET

66228178

VG-87 VEV+V 2-04 GTPI +2131

2-01 3 365 35116 4.1 1427 3.3 1146

• *Sons already accepted into AI!!*

DE-SU BOOKEM-ET 66636657 99%RHA
TR TV TL TY TD

VG-86 VV+V 3-08 GM GTPI +2319

MS GOLD-N-OAKS MAYBALINE-ET

69118100

VG-87 VVVVV DOM 3-01 GTPI +2129

PTA +914M +38F +39P 82%R 8/2014

PTA +469NM +.02%F +.04%P

PTA +2.8PL 2.68SCS +.0DPR 5.3%DCE

PTA +3.34T +2.55UDC +2.31FLC 83%R 8/2014

2-08 2 365 33064 3.7 1218 3.3 1083

• *Sons in A.I.*

10

3rd Dam: Gold-N-Oaks S Marbella-ET
 (VG-89 EX-MS GMD DOM 2Y)
 2-00 2 365 31580 4.2 1321 3.0 948
4th Dam: Gold-N-Oaks Morty Malibu-ET
 (2E-94 EEEEE)
 1-11 2 365 31260 4.5 1420 3.2 989
5th Dam: Gold-N-Oaks Marshl Cinda-ET
 (VG-87 VG-MS GMD DOM)
 3-06 2 365 41950 4.1 1720 3.3 1383
 LIFE 1714 160480 4.3 6913 3.5 5587
6th Dam: Gold-N-Oaks Bosco Cinnamon
 (EX-92 EEEEE)
 5-03 2 350 41550 4.8 1993 3.0 1244
7th Dam: Gold-N-Oaks Duster Cindy
 (VG-88 EEEVV DOM)
 3-03 2 365 41700 4.3 1774 3.1 1299
 LIFE 1161 112960 4.1 4542 3.3 3754
8th Dam: Gold-N-Oaks Melwood Cinder
 (VG-89 EEEVV GMD)
 3-02 2 365 37090 3.4 1243 3.0 1130
9th Dam: Gold-N-Oaks Cinder Cinnamon
 (VG-85)
 2-02 2 340 24230 3.9 939 3.1 753
10th Dam: Gold-N-Oaks Command Brandy
 (VG-86)
 4-07 2 301 21620 4.6 999 3.2 686



Gold-N-Oaks Marabell-ET (VG-88)
Maternal Sister to the 2nd Dam of Lot 6

6

Pen-Col SS Madame-ET *TL *TD

Born 11/11/2013 Reg. 72754138 99%RHA
 9K GTPI +2536

PTA +2077M +92F +76P 71%R 8/2014

PTA +913NM +.06%F +.05%P

PTA +6.2PL 2.70SCS -.2DPR 5.1%DCE

PTA +3.09T +2.74UDC +1.58FLC 71%R 8/2014

• **Highest Tested GTPI Daughter of Misty!**

• **High RGZ and sells with a 10 Embryo contract to Germany at \$2,500/embryo**

Sells as a package with every pregnancy & transfer made prior to the sale. Buyer responsible for all flushing costs and live calf expenses through Tans Ova.

Pen-Col Farms
 PO Box 528
 Millville, PA 17846
 570/380-3456

Terms: Cash unless prior arrangements are made specifically with seller and sale management is advised of these special terms in advance of the sale.

SEAGULL-BAY SUPERSIRE-ET
69981349 TV TL TY TD

VG-87 VVVV 3-07 GTPI +2444

PTA +2467M +112F +79P 77%R 8/2014

PTA +882NM +.08%F +.02%P 100%US

PTA +4.9PL 2.87SCS -.1DPR 4.6%DCE

PTA +2.40T +1.68UDC +1.17FLC 77%R 8/2014

PEN-COL BOOKEM MISTY-ET 70609512
99%RHA TY

GTPI +2365

PTA +1734M +68F +64P 77%R 8/2014

PTA +705NM +.02%F +.04%P

PTA +4.3PL 2.83SCS -.2DPR 3.8%DCE

PTA +3.46T +2.58UDC +1.94FLC 77%R 8/2014

• **Due in December and looks very promising**

• **Full Sister to Bookem VG-87-2Y**

• **8 Daughters & 7 sons over +2300 GTPI!**

ROYLANE SOCRA ROBUST-ET 64966739
TR TV TL TD

VG-88 VVVV 3-03 GM GTPI +2347

PTA +1615M +103F +63P 99%R 8/2014

AMMON-PEACHEY SHAUNA-ET

66228178

VG-87 VEV+V 2-04 GTPI +2131

2-01 3 365 35116 4.1 1427 3.3 1146

• **Sons already accepted into AI!!**

DE-SU BOOKEM-ET 66636657 99%RHA
TR TV TL TY TD

VG-86 VV+V 3-08 GM GTPI +2319

MS GOLD-N-OAKS MAYBALINE-ET

69118100

VG-87 VVVVV DOM 3-01 GTPI +2129

PTA +914M +38F +39P 82%R 8/2014

PTA +469NM +.02%F +.04%P

PTA +2.8PL 2.68SCS +.0DPR 5.3%DCE

PTA +3.34T +2.55UDC +2.31FLC 83%R 8/2014

2-08 2 365 33064 3.7 1218 3.3 1083

• **Sons in A.I.**

3rd Dam: Gold-N-Oaks S Marbella-ET
 (VG-89 EX-MS GMD DOM 2Y)
 2-00 2 365 31580 4.2 1321 3.0 948
4th Dam: Gold-N-Oaks Morty Malibu-ET
 (2E-94 EEEEE)
 1-11 2 365 31260 4.5 1420 3.2 989
5th Dam: Gold-N-Oaks Marshl Cinda-ET
 (VG-87 VG-MS GMD DOM)
 3-06 2 365 41950 4.1 1720 3.3 1383
 LIFE 1714 160480 4.3 6913 3.5 5587
6th Dam: Gold-N-Oaks Bosco Cinnamon
 (EX-92 EEEEE)
 5-03 2 350 41550 4.8 1993 3.0 1244
7th Dam: Gold-N-Oaks Duster Cindy
 (VG-88 EEEVV DOM)
 3-03 2 365 41700 4.3 1774 3.1 1299
 LIFE 1161 112960 4.1 4542 3.3 3754
8th Dam: Gold-N-Oaks Melwood Cinder
 (VG-89 EEEVV GMD)
 3-02 2 365 37090 3.4 1243 3.0 1130
9th Dam: Gold-N-Oaks Cinder Cinnamon
 (VG-85)
 2-02 2 340 24230 3.9 939 3.1 753
10th Dam: Gold-N-Oaks Command Brandy
 (VG-86)
 4-07 2 301 21620 4.6 999 3.2 686



Larcrest Cache-ET (VG-86 VG-MS 2y)
Dam of Lot 7

7 Triplecrown-MH Halo 743-ET *TD *TL

Born 6/2/2014 Reg. 73517001 99%RHA
 13K GTPI +2597
 PTA +1083M +62F +47P 72%R 8/2014
 PTA +941NM +.08%F +.05%P
 PTA +8.5PL 2.50SCS +4.1DPR 5.1%DCE
 PTA +3.02T +2.88UDC +2.34FLC 71%R 8/2014

*Triple Crown Genetics
 & Mitch Hockett
 C/O John Anderson
 427 Pheasant Rd
 Jerome, ID 83338
 208/221-0904*

Terms: Cash unless prior arrangements are made specifically with seller and sale management is advised of these special terms in advance of the sale.

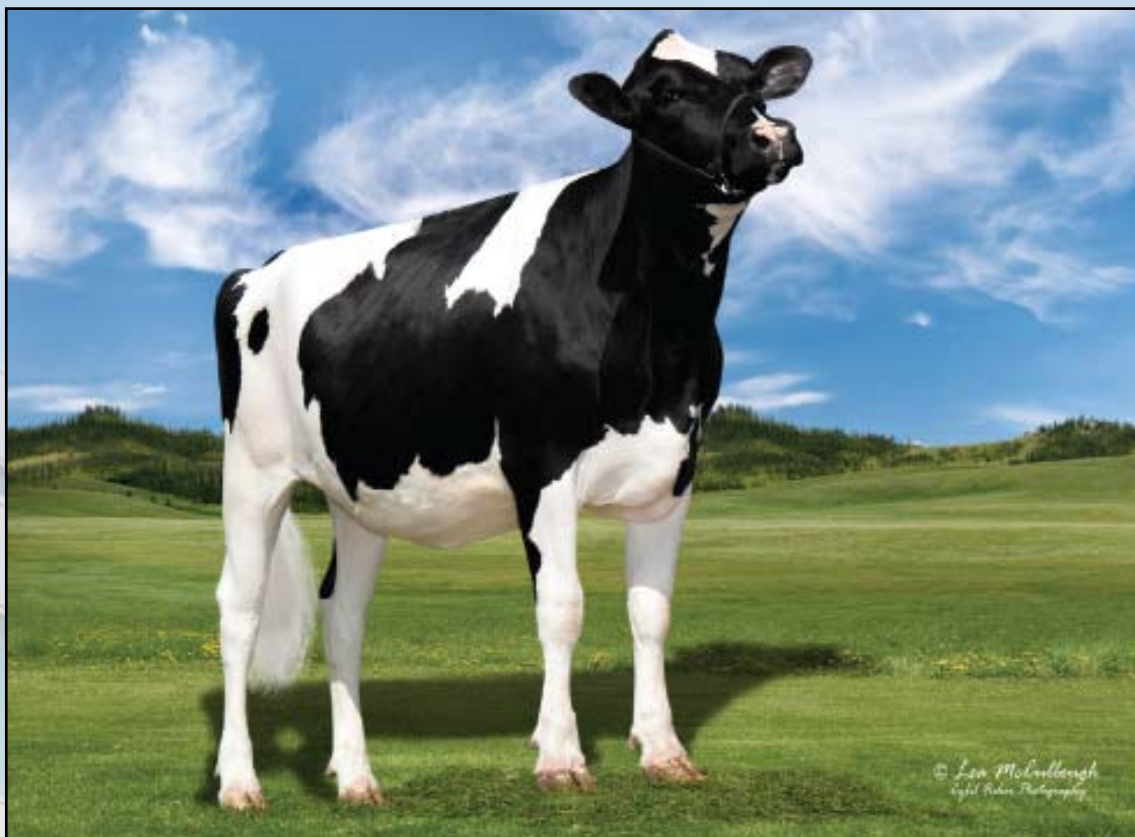
COOKIECUTTER PETRON HALOGEN
840 8710387 TV TL TY TD
 GTPI +2487
 PTA +958M +54F +37P 75%R 8/2014
 PTA +882NM +.08%F +.03%P 100%US
 PTA +7.9PL 2.36SCS +3.7DPR 4.8%DCE
 PTA +2.88T +3.06UDC +1.21FLC 73%R 8/2014

WELCOME SUPER PETRONE-ET
69207641 TR TV TL TY TD
 GTPI +2266
 PTA +2.28T +2.19UDC +1.51FLC 77%R 8/2014
COOKIECUTTER MOM HALO-ET
840 3007069733
 VG-88 VV+VE DOM 2-09 50K GTPI +2301
 2-00 3 365 35410 5.2 1832 3.5 1241

3rd Dam: Larcrest Crimson-ET
 (2E-92 EEEEE GMD DOM)
 2-02 2 365 36060 4.7 1710 3.7 1351
4th Dam: Larcrest Cosmopolitan
 (VG-87 E+VVV GMD DOM)
 2-04 2 365 30930 4.1 1261 3.6 1119
 • Bulls & Embryos sold Worldwide
5th Dam: Larcrest Oside Champagne-TW
 (EX-90 EVVVE GMD DOM)
 2-03 2 365 29110 4.5 1322 3.7 1077
6th Dam: Larcrest Juror Chanel
 (3E-93 EEEEE GMD DOM)
 9-00 2 365 48460 4.0 1943 3.4 1648
 Over 250,000 Lifetime
7th Dam: Larcrest Lindy Chandra (VG-85)
 2-05 2 365 20896 4.8 993 3.8 803
8th Dam: Larcrest Inspiration Carly
 (VG-87 EEVVV)
 3-05 2 305 21800 4.5 973 3.3 802

LARCREST CACHE-ET 57187017
99%RHA
 VG-86 +V+VV 2-06 3K GTPI +2184
 PTA +1192M +63F +44P 75%R 8/2014
 PTA +645NM +.07%F +.03%P
 PTA +4.4PL 2.88SCS +2.8DPR 5.1%DCE
 PTA +1.92T +94UDC +1.79FLC 78%R 8/2014
 2-04 3 365 29440 4.3 1260 3.6 1066
 • Full Sister to Chevrolet

BADGER-BLUFF FANNY FREDDIE
60996956 99%RHA TV TL TY TD
 GM GTPI +2214 (8/14)
LARCREST CHENOA-ETS 56264510
99%RHA
 VG-87 VVVVV DOM 3-00 GTPI +2157
 PTA +1349M +65F +47P 83%R 8/2014
 PTA +593NM +.06%F +.02%P
 PTA +4.0PL 2.85SCS +4DPR 6.0%DCE
 PTA +2.57T +1.86UDC +1.24FLC 83%R 8/2014
 2-04 2 365 35930 4.1 1487 3.5 1259



Bryhill SS Sateen P-ET
Dam of Lot 8

8 **Seagull-Bay Sunline-ET**

Born 6/24/2014 Reg. 840 3124720519 100%RHA
 77K GTPI +2570

PTA +2570M +82F +57P +913NM
 PTA +6.4PL 2.55SCS +2.3DPR 2.3 DPR
 PTA +3.16T +2.96UDC +1.75FLC 71%R 8/2014

Seagull Bay Dairy, Inc.
c/o Greg Andersen
2549 Lakeview Rd
American Falls, ID 83211
208/339-0904

Terms: Cash unless prior arrangements are made specifically with seller and sale management is advised of these special terms in advance of the sale.

COOKIECUTTER PETRON HALOGEN
840 8710387 TV TL TY TD

GTPI +2487
 PTA +958M +54F +37P 75%R 8/2014
 PTA +882NM +.08%F +.03%P 100%US
 PTA +7.9PL 2.36SCS +3.7DPR 4.8%DCE
 PTA +2.88T +3.06UDC +1.21FLC 73%R 8/2014

BRYHILL SS SATEEN P-ET 108133333C
PC TL TD

77K GTPI +2440 / GLPI +3087 / DGV +3130
 PTA +1633M +90F +57P 72%R 8/2014
 PTA +849NM +.11%F +.03%P
 PTA +5.5PL 2.62SCS +5DPR 4.4%DCE
 PTA +2.89T +2.20UDC +2.37FLC 71%R 8/2014
 CAN GPA +1604M +94F +62P
 • Former #1 GTPI Polled Heifer!

WELCOME SUPER PETRONE-ET
69207641 TR TV TL TY TD

GTPI +2266
 PTA +2.28T +2.19UDC +1.51FLC 77%R 8/2014
COOKIECUTTER MOM HALO-ET
840 3007069733
 VG-88 VV+VE DOM 2-09 50K GTPI +2301
 2-00 3 365 35410 5.2 1832 3.5 1241

SEAGULL-BAY SUPERSIRE-ET 69981349
TV TL TY TD

VG-87 VVVV 3-07 GTPI +2444
 PTA +2467M +112F +79P 77%R 8/2014

VENTURE SHOTTBOLT SIZZLE P
11306297C

VG-86 +VVVV 2-03 GTPI +2079
 PTA +1076M +70F +33P 70%R 8/2014
 PTA +475NM +.11%F +.00%P
 PTA +1.7PL 2.81SCS -.8DPR 6.4%DCE
 PTA +3.03T +2.41UDC +2.71FLC 70%R 8/2014

• Three choices from Sizzle P have sold at public auction for \$100,000 (Male), \$80,000 (Female) & \$80,000 (Female)

3rd Dam: Venture Goldwyn Soup P
 (GP-83-3Y CAN)
 1-11 2 365 25620 4.7 1202 3.5 911
 2nd Sr. Calf Prince Edward 2010
4th Dam: Hickorymea-I I Ad Sweet P-Red
 (CAN GP-84-3Y 1*)
 4-01 2 365 24838 5.1 1246 3.7 895
5th Dam: Hickorymea Airliner Tasha P
 (EX-90 1*)
 3-01 2 365 25289 5.5 1384 3.5 895
6th Dam: Hickorymea Gator Tanya P
 (2E-91)
 5-07 2 365 27251 5.0 1376 3.4 937
 LIFE 5 Lact. 104582 4.9 5137 3.4 3582
7th Dam: Hickorymea Houdini Tabbi
 (3E-90)
 8-05 2 365 27941 4.4 1232 3.3 930
 LIFE 7 Lact. 187142 4.6 8543 3.3 6228
8th Dam: Hickorymea Art Penny
 (VG-85-5Y DOM)



OCD Mogul Abracadabra-ET
Dam of Lot 9



Vision-Gen Sh Frd A12276-ET
(VG-87 VG-MS DOM)
2nd Dam of Lot 9

9

Peak Abra Kado 826-ET

Born 6/12/2014 Reg. 840 3125475782 99%RHA
 13K GTPI +2563 / GLPI +3323 / DGV +3397
 PTA +2062M +67F +71P 71%R 8/2014
 PTA +866NM -.03%F +.03%P
 PTA +6.0PL 2.73SCS +1.4DPR 4.6%DCE
 PTA +3.41T +2.97UDC +2.89FLC 68%R 8/2014
 CAN GPA +2096M +68F +76P +17C +15MS +13FL
 • *The #1 GTPI AltaKado Female in the World!*

PEAK Genetics
 Watertown, WI 53094
 Kyle Demmer 563/451-5376
 kyle.demmer@altagenetics.com
 Jon Scheffers 320/260-5436
 Mike Menendez 845/598-8499

Terms: Cash unless prior arrangements are made specifically with seller and sale management is advised of these special terms in advance of the sale.

LOOKOUT PESCE ALTAKADO-ET
107931088C TV TL TY TD
 GTPI +2340
 PTA +1996M +61F +72P 76%R 8/2014
 PTA +760NM -.04%F +.04%P 100%US
 PTA +5.0PL 2.72SCS +1.1DPR 5.0%DCE
 PTA +2.13T +1.80UDC +1.50FLC 72%R 8/2014

AIR-OSA-EXEL ALTAIRNET-ET
68769438 TV TL TY TD
 GTPI +2035
MS C-HAVEN OMAN KOOL-ET 69554075
 VG-87 VVVVV 2-09 GTPI +2224
 2-10 2 365 34983 3.3 1171 3.5 1235

3rd Dam: Applouis Jet Stream Alda-ET
 (VG-85 VG-MS DOM 2Y)
 2-02 2 309 21000 4.6 962 3.3 700
4th Dam: Morningview Otsd April-ET
 (VG-87 VV+VE GMD DOM)
 2-03 3 365 36010 4.3 1560 3.6 1291
5th Dam: Morningview Gibbon Judy-ET
 (VG-85 GMD DOM)
 2-04 2 305 25010 3.9 964 3.2 795
6th Dam: Morningview Converse Judy
 (EX-93 GMD DOM)
 4-05 2 365 38100 4.1 1565 3.3 1269
7th Dam: Morningview Aerostar Jix-ET
 (VG-87 EX-MS)
 5-06 2 340 32040 3.9 1249 3.4 1089
8th Dam: Walnutt-Knoll Judy-ET
 (VG-87 VEVV GMD DOM)
 4-08 2 357 37210 4.0 1480 3.2 1187
9th Dam: Walnutt-Knoll RORAE Jenny
 (2E-91 EEVE GMD DOM)
 7-04 2 365 29830 4.1 1210 3.0 885
10th Dam: Lynnberry Gem (VG-89 EEVE)
 6-02 2 365 27770 4.1 1143

OCD MOGUL ABRACADABRA-ET
840 3009533582 99%RH ATV TL TY TD
 77K GTPI +2513
 PTA +1481M +84F +56P 75%R 8/2014
 PTA +818NM +.11%F +.04%P
 PTA +5.1PL 2.83SCS +1.5DPR 5.6%DCE
 PTA +3.43T +3.20UDC +3.24FLC 73%R 8/2014
 • *Highest GTPI daughter of A12276!*
 • *Has 5 daughters over 2400 GTPI!*
 • *Due 1/25/15. Big, Square, deep bodied heifer with incredible udder promise.*

MOUNTFIELD SSI DCY MOGUL-ET 840
3006972816 TR TV TL TY TD
 GTPI +2467
VISION-GEN SH FRD A12276-ET
69517612 99%RHA
 VG-87 VE++V DOM 3-06 GTPI +2220
 PTA +884M +55F +43P 81%R 8/2014
 PTA +628NM +.08%F +.06%P
 PTA +4.5PL 2.94SCS +1.9DPR 5.8%DCE
 PTA +2.62T +1.86UDC +2.70FLC 81%R 8/2014
 2-01 3 365 28700 3.7 1061 3.5 997
 • *Four daughters over 2400 GTPI!*



Pine-Tree Monica Planeta-ET (VG-86 VG-MS DOM)
Dam of Lot 10

10

Sandy-Valley Pomegranate-ET

***Extreme for Milk, +2536
 Fat, +94 & Protein, +77!***

Born 7/11/2014 Reg. 72471805 100%RHA
 GTPI +2521 / GLPI +3329 / DGV +3488
 PTA +2790M +92F +77P 10/2014
 PTA +943NM +6.9PL 2.73SCS +.5DPR
 PTA +2.82T +1.46UDC +2.11FLC 10/2014
 CAN GPA +3219M +104F +92P +12C +11MS +9FL
 • **Min. Starting Bid \$145,000**

Sandy-Valley
 c/o Greg Bauer
 3300 Soo Marie Ave
 Stevens Point, WI 54481
 715/445-3363

Terms: Cash unless prior arrangements are made specifically with seller and sale management is advised of these special terms in advance of the sale.

BACON-HILL MONTROSS-ET
71703339 TV TL TY TD
 50K GTPI +2541
 PTA +2835M +95F +83P 75%R 8/2014
 PTA +877NM -.03%F -.01%P 100%US
 PTA +4.6PL 2.81SCS +.3DPR 5.9%DCE
 PTA +3.01T +2.45UDC +2.85FLC 73%R 8/2014

PINE-TREE MONICA PLANETA-ET
69169491
 VG-86 VV++V DOM 3-04 GTPI +2189
 PTA +1629M +60F +57P 82%R 8/2014
 PTA +656NM +.00%F +.03%P
 PTA +5.4PL 2.63SCS -.2DPR 6.4%DCE
 PTA +2.39T +1.46UDC +.81FLC 83%R 8/2014
 2-01 2 365 30675 3.7 1146 3.6 1112
 • **4 maternal sisters have had offspring exceed +2500 GTPI!**

MOUNTFIELD SSI DCY MOGUL-ET 840
3006972816 TR TV TL TY TD
 GTPI +2467
UNIQUE-STYLE BOLTON MONEY
139121711 TM TV TL TY
 EX-91 VE+VE DOM 3-03 GTPI +2175
 3-01 3 365 38430 4.2 1614 3.4 1320
 2-00 2 360 25540 3.7 950 3.3 842

ENSENADA TABOO PLANET-ET
60597003 TR TV TL TY TD
 EX-90 EEV 4-11 GM GTPI +2073
PINE-TREE MONICA SUELA-ET 62848061
 VG-87 VVVVV DOM 2-07 GTPI +1874
 PTA +565M +36F +31P 92%R 8/2014
 PTA +363NM +.06%F +.05%P
 PTA +2.0PL 2.68SCS +.2DPR 6.8%DCE
 PTA +1.86T +.81UDC +1.92FLC 91%R 8/2014
 1-11 3 305 27630 3.4 935 3.4 927

3rd Dam: Pine-Tree Missy Monica
 (VG-85 DOM)
 4-11 3 305 36010 3.5 1248 2.9 1035
4th Dam: Wesswood-HC Rudy Missy-ET
 (3E-92 EEEEE GMD DOM)
 4-11 3 365 40880 4.1 1665 3.4 1385
 3rd OH Protein
 LIFE 1262 119610 4.1 4885 3.4 4031
5th Dam: Wesswood Elton Mimi
 (EX-90 EX-MS GMD DOM)
 3-05 2 365 35380 3.3 1160 3.0 1054
6th Dam: Wesswood Mandingo Ivy
 (VG-87)
 6-05 2 365 36330 3.6 1305 3.0 1087
 LIFE 144062 3.4 4934 3.1 4411
7th Dam: Wesswood Astro Matt Ester
 (VG-87 GMD DOM)
8th Dam: Wesswood Bell Claudette
 (VG-87 GMD DOM)



Ms Welcome Uno Tarina-ET
Dam of Lot 11

11

Ms Mardi Tapo-ET

Born 7/2/2014 Reg. 840 3125201984 100%RHA

GTPI +2565 / GLPI +3367 / DGV +3521

PTA +1744M +82F +53P 75%R 9/2014

PTA +842NM +.07%F +.00%P

PTA +5.2PL 2.73SCS +2.5DPR 3.7%DCE

PTA +3.62T +3.46UDC +2.39FLC 74%R 9/2014

CAN GPA +1865M +94F +65P +20C +19MS +11FL +11DS

• **The #1 GTPI Mardi Gras in the WORLD!!**

MR MOVIESTAR MARDI GRAS-ET
71494657 TV TL TY TD

GTPI +2480

PTA +1277M +80F +51P 75%R 8/2014

PTA +861NM +.13%F +.05%P 100%US

PTA +6.6PL 2.82SCS +2.5DPR 5.4%DCE

PTA +2.83T +3.07UDC +1.71FLC 73%R 8/2014

MS WELCOME UNO TARINA-ET
840 3009276290

GTPI +2431

PTA +1810M +88F +58P 75%R 8/2014

PTA +758NM +.08%F +.01%P

PTA +3.6PL 2.73SCS +1.6DPR 5.3%DCE

PTA +3.14T +2.40UDC +2.69FLC 74%R 8/2014

• *Fresh at Welcome Stock on 8/29/14 and looks tremendous!!! Great Mammary System, Feet & legs and extremely Wet!*

MOUNTFIELD SSI DCY MOGUL-ET 840
3006972816 TR TV TL TY TD

GTPI +2467

BROOKVIEW-E MOVIESTAR-ET

140301401

VG-86 VVV+V 3-00 GTPI +1907

2-07 2 365 31200 4.6 1440 3.4 1069

AMIGHETI NUMERO UNO-ET
7990915143ITA TV TL TY TD

GTPI +2362

MS WELCOME COLBY TAYA-ET

840 3002918882 TY

VG-88 EEEVV DOM 5-01 GTPI +2117

PTA +2203M +45F +55P 86%R 8/2014

PTA +494NM +1.6PL 2.86SCS +5DPR 5.4%DCE

PTA +2.45T +2.16UDC +1.93FLC 87%R 8/2014

1-10 3 365 41240 3.3 1357 3.2 1333

• *Dam of Tango, +2401 GTPI, +774NM, 3.4IT*

• *Contracted for Sons & Embryos.*

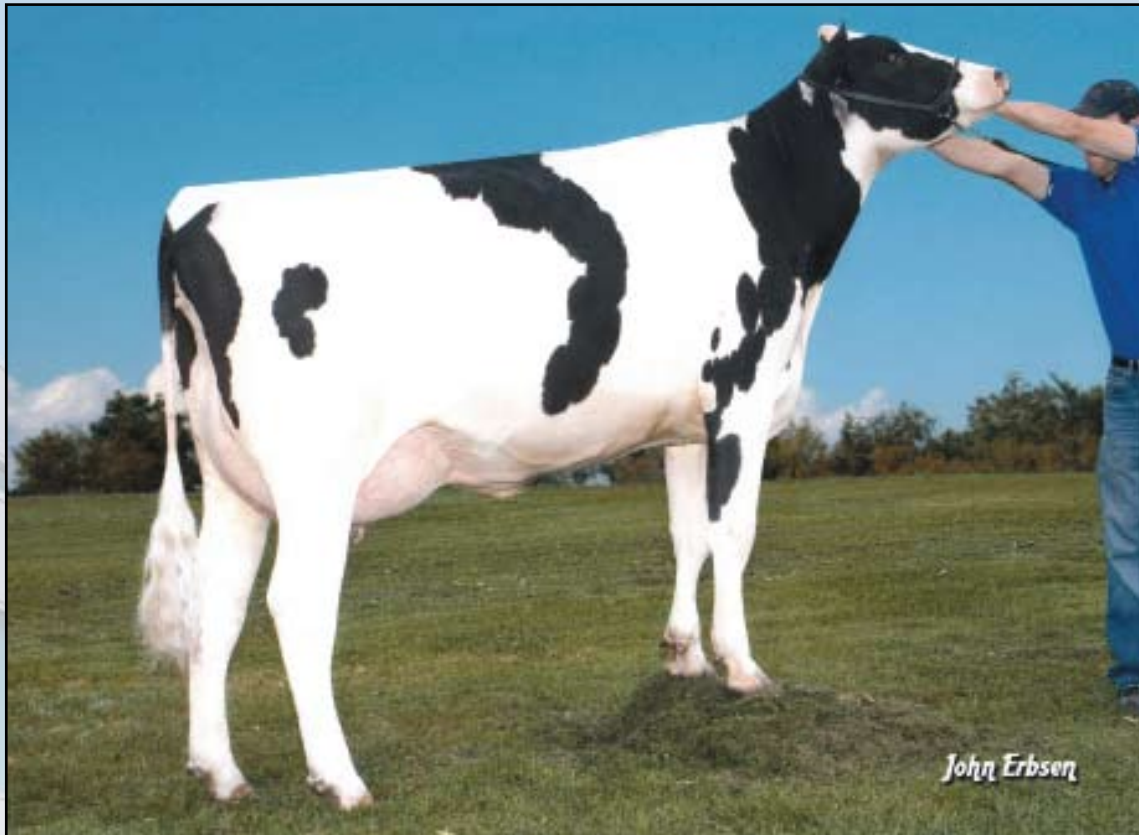
• *Embryos have been exported to Japan*

*J. Butler, Maverick,
D.Rudin & P. Carroll
clo Jeff Butler*

*1710 BE 7750 S. Road
Chebanse, IL 60922
217/341-2437*

Terms: Cash unless prior arrangements are made specifically with seller and sale management is advised of these special terms in advance of the sale.

3rd Dam: Clear-Echo FBI 1461-ET
(EX-90 EX-MS)
2-00 3 365 36230 3.5 1261 3.1 1121
4th Dam: Clear-Echo 2635 Bol 1204-ET
(VG-88 VEVVV DOM)
4-06 2 365 43950 3.7 1612 2.9 1295
5th Dam: Clear-Echo Addisn Thea 635
(VG-85 VG-MS GMD)
1-11 2 365 33310 3.8 1272 3.1 1041
6th Dam: Clear-Echo Matt Thea 380-ET
(GP-83 3Y)
2-10 2 343 27800 3.5 962 3.1 866
7th Dam: Clear-Echo Lake Thea-ET
(EX-90 EEE+V)
4-03 3 330 33040 4.1 1343 3.1 1017
2-04 2 365 26220 4.2 1108 3.3 854
8th Dam: Caernarvon Thor Shea-ET
(EX-90 EEE+E)
4-04 2 365 30460 4.9 1499 3.4 1033
9th Dam: Cabin-Run Mark Star-ET
(VG-86 VG-MS GMD DOM)
4-02 2 365 34260 3.9 1336 3.2 1094
10th Dam: Gay-Ridge Spirit Stacey
(VG-86 VG-MS GMD DOM)
5-04 2 365 33670 4.4 1492 2.8 939
LIFE 2472 162850 3.9 6358 3.4 4956



Mountfield Marsh Maxine-ET (VG-88 EX-MS DOM 2y)
2nd Dam of Lot 12

12

Mountfield JBR Mass-ET *TL *TD

Born 5/27/2014 Reg. 73664299 99%RHA
 13K GTPI +2540

PTA +1843M +101F +56P 72%R 8/2014

PTA +887NM +.12%F +.00%P

PTA +5.1PL 2.65SCS +2.3DPR 5.1%DCE

PTA +2.97T +2.33UDC +3.06FLC 69%R 8/2014

• **The #1 GTPI Jabir in the breed on the Aug run!**

• **Extreme for Fat!!**

Marshfield Farms
 2758 Cherry Valley Rt 20
 Marcellus, NY 13108-9687
 315/673-4470

Terms: Cash unless prior arrangements are made specifically with seller and sale management is advised of these special terms in advance of the sale.

COYNE-FARMS JABIR-ET 70801850

99%RHA TY

GTPI +2430

PTA +1440M +92F +52P 77%R 8/2014

PTA +857NM +.15%F +.03%P 100%US

PTA +5.2PL 2.58SCS +2.8DPR 4.8%DCE

PTA +2.18T +1.49UDC +2.51FLC 75%R 8/2014

MOUNTFIELD PT MATRONE-ET

71259520

GTPI +2400

PTA +1789M +82F +50P 74%R 8/2014

PTA +808NM +.06%F -.01%P

PTA +5.5PL 2.62SCS +1.7DPR 5.8%DCE

PTA +2.73T +2.42UDC +1.77FLC 73%R 8/2014

• **Maternal Sister to Mogul!**

MARBRI FACEBOOK-ET 10847042C TV

TL TY TD

VG-86-2Y CAN GTPI +2356

COYNE-FARMS FREDDIE JILL-ET

68677598 99%RHA TV TL

VG-85 ++GVV 2-04 GTPI +2121

2-00 3 365 33860 3.3 1125 3.1 1048

WELCOME SUPER PETRONE-ET

69207641 TR TV TL TY TD

GTPI +2266

PTA +2.28T +2.19UDC +1.51FLC 77%R 8/2014

MOUNTFIELD MARSH MAXINE-ET

62784081

VG-88 VV+VE DOM 2-07 GTPI +2056

PTA +806M +78F +41P 88%R 8/2014

PTA +519NM +.18%F +.06%P

PTA +2.0PL 2.80SCS -.9DPR 6.9%DCE

PTA +2.08T +1.87UDC +2.48FLC 87%R 8/2014

2-03 2 159 14320 4.3 611 3.4 481 (Inc)

• **Super transmitter, dam of Mogul!**

3rd Dam: Pine-Tree Missy Miranda-ET

(VG-86 VG-MS DOM)

2-01 365 28350 4.3 1232 3.7 1060

Multiple Sons in A.I.

4th Dam: Wesswood-HC Rudy Missy-ET

(3E-92 EEEEE GMD DOM)

4-11 3 365 40880 4.1 1665 3.4 1385

3rd OH Protein

LIFE 1262 119610 4.1 4885 3.4 4031

6th Dam: Wesswood Elton Mimi

(EX-90 EX-MS GMD DOM)

3-05 2 365 35380 3.3 1160 3.0 1054

7th Dam: Wesswood Mandingo Ivy

(VG-87)

6-05 2 365 36330 3.6 1305 3.0 1087

LIFE 144062 3.4 4934 3.1 4411

8th Dam: Wesswood Astro Matt Ester

(VG-87 GMD DOM)

6-08 2 365 31860 3.5 1125 2.9 921

LIFE 140110 3.6 5029 3.0 4158

9th Dam: Wesswood Bell Claudette

(VG-87 GMD DOM)

8-04 2 365 38150 3.8 1443 2.8 1064

LIFE 280980 3.6 9997 2.9 8092



Kingemerling Osty Favor-ET (VG-85 VG-MS, 2y)
Full Sister to the Dam of Lot 13

13

Emerling Montross Fare-ET

Born 6/19/2014 Reg. 71875959 100%RHA
 13K GTPI +2510 / GLPI +3155 / DGV +3232
 PTA +2649M +89F +73P 72%R 8/2014
 PTA +936NM +6.9PL 2.80SCS +1.2DPR 6.2%DCE
 PTA +2.45T +1.83UDC +2.60FLC 70%R 8/2014
 CAN GPA +2674M +85F +78P
 • **Extreme for Milk!!**

Emerling Farms LLC
 c/o John Emerling
 2904 Route 246
 Perry, NY 14530
 585/237-6094

Terms: Cash unless prior arrangements are made specifically with seller and sale management is advised of these special terms in advance of the sale.

BACON-HILL MONTROSS-ET
71703339 TV TL TY TD

50K GTPI +2541
 PTA +2835M +95F +83P 75%R 8/2014
 PTA +877NM -.03%F -.01%P 100%US
 PTA +4.6PL 2.81SCS +3DPR 5.9%DCE
 PTA +3.01T +2.45UDC +2.85FLC 73%R 8/2014

KINGEMERLING OSTY FAMOUS-ET
70041161

GTPI +2138
 PTA +2221M +70F +56P 75%R 8/2014
 PTA +687NM -.04%F -.04%P
 PTA +4.7PL 2.83SCS +7DPR 6.2%DCE
 PTA +1.34T +61UDC +1.83FLC 75%R 8/2014
 • Full Sister VG-85 VG-MS, 2y!

MOUNTFIELD SSI DCY MOGUL-ET 840
3006972816 TR TV TL TY TD

GTPI +2394
UNIQUE-STYLE BOLTON MONEY
139121711 TM TV TL TY
 EX-91 VE+VE DOM 3-03 GTPI +2175
 3-01 3 365 38430 4.2 1614 3.4 1320
 2-00 2 360 25540 3.7 950 3.3 842

CO-OP O-STYLE OMAN JUST-ET
137611441 TV TR TL TY

GM GTPI +2185
KING-EMER PLANET FAITHY-ET
66677006 TY
 GP--83 VVG+V + 2-11 GTPI +2117
 PTA +2091M +97F +64P 82%R 8/2014
 PTA +646NM +.07%F +.00%P
 PTA +3.5PL 2.93SCS -.5DPR 6.8%DCE
 PTA +1.59T +69UDC +4.8FLC 81%R 8/2014
 2-03 3 334 29190 4.3 1247 3.3 962
 3-05 3 301 29590 3.9 1158 3.4 996

3rd Dam: Honeycrest Shottle Faith-ET
 (EX-91 EEVVE DOM)
 2-06 365 38220 4.4 1680 3.1 1179
 • Multiple AI sons
4th Dam: Honeycrest Flower Girl-ET
 (VG-85 +V+V+ GMD)
 2-01 365 39910 3.7 1483 2.7 1067
5th Dam: Honeycrest Maryj Twilite-ET
 (VG-86 GMD)
 1-11 365 32200 4.0 1287 3.3 1069
6th Dam: Honeycrest Aerostar Mary-ET
 (2E-90 GMD-DOM)
 5-05 365 47470 3.7 1766 2.9 1396
 LIFE 150600 3.7 5626 3.2 4819
 • 16 sons in AI *Embryos exported
 • 3 full sisters all VG or EX & over 40000M
7th Dam: Honeycrest Blkstar Kathryn
 (EX-90 GMD-DOM)
 3-06 365 28740 3.7 1074 3.4 976
8th Dam: Honeycrest Mars Kathleen
 (VG-88 DOM)
 4-06 365 27460 3.7 1004 3.4 925
9th Dam: Honeycrest Bell Kathleen (EX-90)
 8-02 364 30070 3.7 1119 3.2 953



Roorda Shottle 6802-ET (VG-85 VG-MS DOM 2y)
3rd Dam of Lot 14

14

IHG Nominee Mer 9040-ET

Innovative Holstein Genetics LLC
c/o Jeff Butler
1710 BE 7750 S. Road
Chebanse, IL 60922
217/341-2437

Born 7/25/2014 Reg. 840 3125944562 100%RHA

GTPI +2494 / GLPI +3438 / DGV +3616

PTA +1709M +73F +60P 72%R 10/2014

PTA +910NM +.04%F +.04%P

PTA +6.9PL 2.51SCS +1.7DPR 4.2%DCE

PTA +2.57T +2.26UDC +2.08FLC 70%R 10/2014

CAN GPA +2057M +88F +81P +14C +11MS +15P

Terms: Cash unless prior arrangements are made specifically with seller and sale management is advised of these special terms in advance of the sale.

• **The #2 GTPI Nominee in the WORLD!!**

• **3616 DGV is a huge number!!**

DE-SU NOMINEE-ET 70626023

99%RHA TY

GTPI +2317

PTA +1398M +62F +55P 74%R 8/2014

PTA +766NM +.04%F +.05%P 100%US

PTA +5.0PL 2.58SCS +2.3DPR 5.7%DCE

PTA +1.90T +1.77UDC +1.70FLC 73%R 8/2014

ROORDA SS MERRITT 15889-ET

71013763 TL TD

9K GTPI +2422

PTA +1587M +80F +58P 72%R 8/2014

PTA +802NM +.08%F +.04%P

PTA +5.7PL 2.84SCS +8DPR 4.6%DCE

PTA +3.07T +2.94UDC +1.48FLC 72%R 8/2014

AMIGHETI NUMERO UNO-ET

7990915143ITA TV TL TY TD

GTPI +2362

COYNE-FARMS MASS JILL-ET 68677629

99%RHA

GTPI +2139

SEAGULL-BAY SUPERSIRE-ET 69981349

TV TL TY TD

VG-87 VVVV 3-07 GTPI +2444

ROORDA OB MIRELLA 15270-ET

70338775

G-76 2-04 50K GTPI +2074

PTA +853M +36F +30P 81%R 8/2014

PTA +503NM +.02%F +.02%P

PTA +4.2PL 2.82SCS -.1DPR 4.9%DCE

PTA +2.81T +3.20UDC +1.42FLC 81%R 8/2014

2-00 3 333 26520 4.1 1079 3.3 887

• **Full Sister to Roorda Obsvr Majic 15272-ET (VG-85 VG-MS 2y), Sold for \$55,000 in the 2011 Destination Vegas Sale**

3rd Dam: Roorda Shottle 6802-ET

(VG-85 V+VVV DOM 2Y)

2-00 3 365 32590 3.6 1180 3.1 1000

4th Dam: Seagull-Bay Manat Mirage-ET

(EX-90 VEVVE DOM)

3-06 3 365 35900 3.8 1364 3.4 1229

• Sold for \$20,000 in the Seagull Bay Dispersal

• 1 EX & 26 VG Daughters

5th Dam: Lynmead Cleitus Minnow-ET

(2E-91 EEEVV GMD DOM)

4-10 3 365 49550 3.7 1857 3.2 1592

7-00 3 365 47140 3.5 1637 3.1 1479

LIFE 2626 255910 3.7 9446 3.3 8481

6th Dam: CMV Belwood Mindy-ET

(VG-85 GMD DOM)

4-01 2 365 36341 3.6 1305 3.4 1239

7th Dam: Briarpatch-R Misty-ET

(VG-85 GMD DOM)

8th Dam: Rilara Mars Las Ravena

(EX-91 GMD DOM)

4-03 2 305 29030 4.6 1329

9th Dam: Rag Apple Locust-Grove Charm

(VG-86 GMD DOM)

5-02 2 26321 3.6 948



Da-So-Burn Dorcy Becka-ET
2nd Dam of Lot 15

15 Peak Burberry Jabir 856-ET

Born 8/4/2014 Reg. 840 3125475812 99%RHA

GTPI +2511 / GLPI +3409 / DGV +3493
 PTA +1568M +100F +59P 71%R 10/2014

PTA +876NM +.16%F +.05%P

PTA +5.3PL 2.53SCS +1.5DPR 4.7%DCE

PTA +2.73T +2.37UDC +2.17FLC 69%R 10/2014

CAN GPA +1801M +113F +67P +12C +12MS

• **Huge Fat, +100F! +3493 DGV!**

Terms: Cash unless prior arrangements are made specifically with seller and sale management is advised of these special terms in advance of the sale.

COYNE-FARMS JABIR-ET 70801850

99% RHA TY

GTPI +2430

PTA +1440M +92F +52P 77%R 8/2014

PTA +857NM +.15%F +.03%P 100%US

PTA +5.2PL 2.58SCS +2.8DPR 4.8%DCE

PTA +2.18T +1.49UDC +2.51FLC 75%R 8/2014

DA-SO-BURN BURBERRY 71792907

77K GTPI +2569 / DGV +3462

PTA +1191M +84F +48P 74%R 8/2014

PTA +906NM +.15%F +.04%P

PTA +7.3PL 2.66SCS +2.0DPR 4.7%DCE

PTA +3.36T +3.12UDC +3.01FLC 74%R 8/2014

CAN GPA +1265M +85F +54P +15C +15MS +13FL

• *One of the highest GTPI & Confirmation Females in the World for her age group!*

• *Burberry is Due 2/20/15*

MARBRI FACEBOOK-ET 10847042C TV

TL TY TD

VG-86-2Y CAN GTPI +2356

COYNE-FARMS FREDDIE JILL-ET

68677598 99% RHA TV TL

VG-85 +G+V+ 2-04 GTPI +2121

2-00 3 365 33860 3.3 1125 3.1 1048

AMIGHETI NUMERO UNO-ET

7990915143ITA TV TL TY TD

GTPI +2362

PTA +2.83T +2.72UDC +1.85FLC 77%R 8/2014

DA-SO-BURN DORCY BECKA-ET 68972295

GP-82 +G+V+ 3-05 9K GTPI +2218

PTA +948M +85F +43P 79%R 8/2014

PTA +710NM +.19%F +.05%P

PTA +4.9PL 2.75SCS +4DPR 6.0%DCE

PTA +2.07T +1.82UDC +1.94FLC 80%R 8/2014

2-04 2 365 29380 4.9 1428 3.4 1001

PEAK Genetics

Watertown, WI 53094

Kyle Demmer 563/451-5376

kyle.demmer@altagenetics.com

Jon Schefers 320/260-5436

Mike Menendez 845/598-8499

3rd Dam: Da-So-Burn Oman Brandy-ET

(GP-83 VG-MS GMD DOM)

4-06 2 365 39370 4.8 1908 3.4 1322

LIFE 1271 108910 5.0 5431 3.7 4008

4th Dam: Da-So-Burn Mtoto Britany

(VG-88 EX-MS)

4-06 2 365 44030 4.4 1924 3.0 1336

LIFE 1165 119730 4.4 5264 3.1 3709

5th Dam: B-V Da-So Rudolph Brooke

(VG-86 GMD DOM)

4-11 2 365 39780 4.6 1849 3.5 1395

LIFE 1625 142440 4.5 6442 3.5 5043

6th Dam: Regancrest Aerostar Bea-ET

(2E-91 2E GMD DOM)

8-03 2 365 42570 4.0 1699 3.1 1325

LIFE 2422 192730 4.0 7800 3.3 6327

7th Dam: Regancrest Mark Chairman Bea

(2E-91 2E GMD)

6-00 2 365 33430 3.9 1316 3.1 1032

LIFE 2036 140130 4.1 5711 3.3 4616

8th Dam: Regancrest Board Chairman Bea

(EX-90 VEVE)

5-09 2 365 26010 4.1 1059 3.4 884

9th Dam: Regancrest Apache Standout Bea

(VG-86 EX-MS)

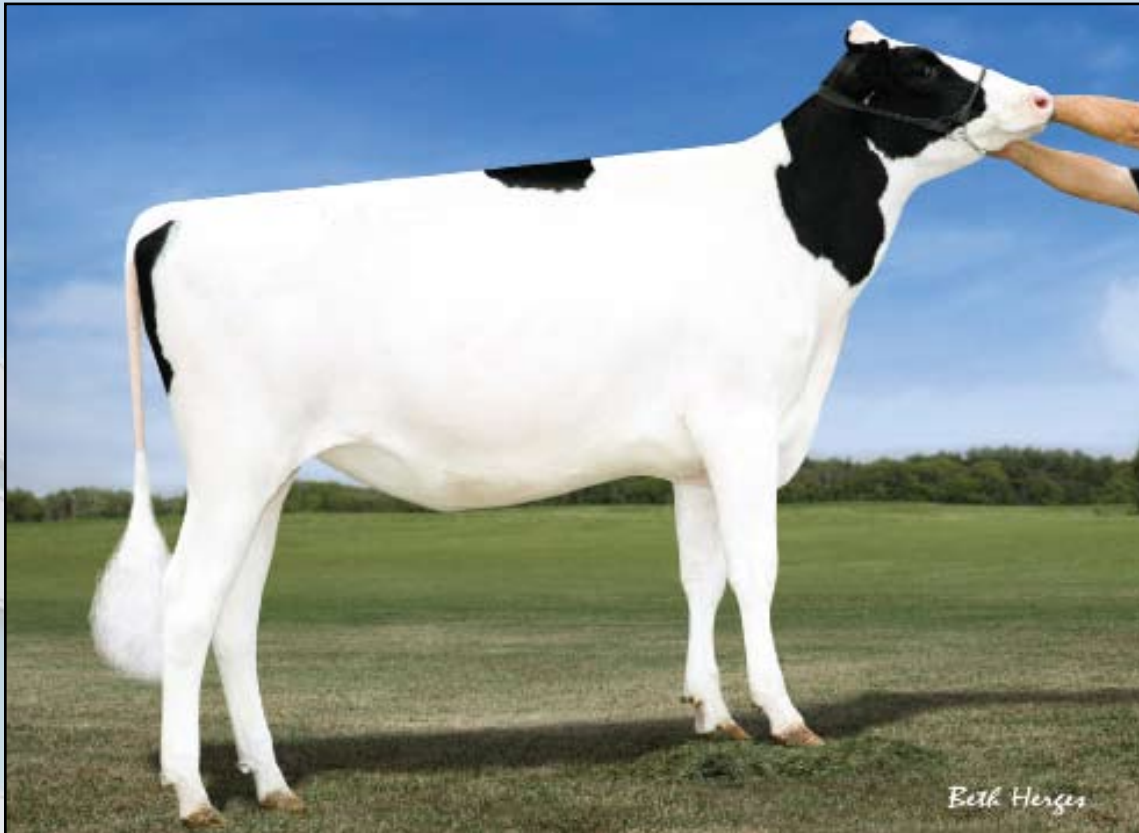
4-10 2 320 19070 4.0 766

LIFE 2432 131940 3.6 4744

10th Dam: Regancrest Standout Bertrand

VG-85 VG-MS)

4-01 2 355 17460 3.3 571



Da-So-Burn Burberry
Dam of Lot 16

16

Peak Burberry Camaro 893-ET

Born 9/6/2014 Reg. 840 3125475849 99%RHA

GTPI +2525 / GLPI +3324 / DGV +3383

PTA +1226M +76F +47P 71%R 10/2014

PTA +898NM +.12%F +.04%P

PTA +7.9PL 2.66SCS +1.7DPR 4.3%DCE

PTA +3.06T +3.05UDC +2.75FLC 68%R 10/2014

CAN GPA +1472M +79F +57P +15C +15MS +13FL

• **Early opportunity an Extremely High and Rare Camaro!**

Terms: Cash unless prior arrangements are made specifically with seller and sale management is advised of these special terms in advance of the sale.

STANTONS CAMARO 11596115C

GTPI +2439

PTA +1179M +81F +50P 76%R 8/2014

PTA +854NM +.14%F +.06%P 100%US

PTA +6.9PL 2.69SCS +1.7DPR 4.5%DCE

PTA +2.59T +2.19UDC +2.37FLC 72%R 8/2014

DA-SO-BURN BURBERRY 71792907

77K GTPI +2569 / DGV +3462

PTA +1191M +84F +48P 74%R 8/2014

PTA +906NM +.15%F +.04%P

PTA +7.3PL 2.66SCS +2.0DPR 4.7%DCE

PTA +3.36T +3.12UDC +3.01FLC 74%R 8/2014

CAN GPA +1265M +85F +54P +15C +15MS +13FL

• *One of the highest GTPI & Confirmation Females in the World for her age group!*

• *Burberry is Due 2/20/15*

GENERATIONS EPIC 11104016C

EX-92 CAN GTPI +2214

STANTONS FREDDIE CAMEO

11083913C

VG-85-2Y CAN

2-02 3 365 30481 4.9 1499 3.5 1065

AMIGHETI NUMERO UNO-ET

7990915143ITA TV TL TY TD

GTPI +2362

PTA +2.83T +2.72UDC +1.85FLC 77%R 8/2014

DA-SO-BURN DORCY BECKA-ET 68972295

GP-82 +G+V+ 3-05 9K GTPI +2218

PTA +948M +85F +43P 79%R 8/2014

PTA +710NM +.19%F +.05%P

PTA +4.9PL 2.75SCS +4DPR 6.0%DCE

PTA +2.07T +1.82UDC +1.94FLC 80%R 8/2014

2-04 2 365 29380 4.9 1428 3.4 1001

PEAK Genetics

Watertown, WI 53094

Kyle Demmer 563/451-5376

kyle.demmer@altagenetics.com

Jon Schefers 320/260-5436

Mike Menendez 845/598-8499

3rd Dam: Da-So-Burn Oman Brandy-ET

(GP-83 VG-MS GMD DOM)

4-06 2 365 39370 4.8 1908 3.4 1322

LIFE 1271 108910 5.0 5431 3.7 4008

4th Dam: Da-So-Burn Mtoto Britany

(VG-88 EX-MS)

4-06 2 365 44030 4.4 1924 3.0 1336

LIFE 1165 119730 4.4 5264 3.1 3709

5th Dam: B-V Da-So Rudolph Brooke

(VG-86 GMD DOM)

4-11 2 365 39780 4.6 1849 3.5 1395

LIFE 1625 142440 4.5 6442 3.5 5043

6th Dam: Regancrest Aerostar Bea-ET

(2E-91 2E GMD DOM)

8-03 2 365 42570 4.0 1699 3.1 1325

LIFE 2422 192730 4.0 7800 3.3 6327

7th Dam: Regancrest Mark Chairman Bea

(2E-91 2E GMD)

6-00 2 365 33430 3.9 1316 3.1 1032

LIFE 2036 140130 4.1 5711 3.3 4616

8th Dam: Regancrest Board Chairman Bea

(EX-90 VEVE)

5-09 2 365 26010 4.1 1059 3.4 884

9th Dam: Regancrest Apache Standout Bea

(VG-86 EX-MS)

4-10 2 320 19070 4.0 766

LIFE 2432 131940 3.6 4744

10th Dam: Regancrest Standout Bertrand

VG-85 VG-MS)

4-01 2 355 17460 3.3 571



Larcrest Ms Chanda-ET
(VG-85 VG-MS 2y)
Dam of Lot 17



Larcrest Crimson-ET (2E-92 GMD DOM)
3rd Dam of Lots 17 & XX

17

Peak Chanda ME 894-ET

*Early opportunity to own one
of the highest Main Events in
the world!*

Born 9/9/2014 Reg. 840 3125475850 99%RHA
GTPI +2494 / GLPI +3298 / DGV +3324
PTA +1468M +98F +56P 72%R 10/2014
PTA +851NM +.17%F +.05%P
PTA +5.0PL 2.78SCS +1.5DPR 4.5%DCE
PTA +3.13T +2.39UDC +2.83FLC 70%R 10/2014
CAN GPA +1323M +90F +56P +15C +11MS +14FL

*PEAK Genetics
Watertown, WI 53094
Kyle Demmer 563/451-5376
kyle.demmer@altagenetics.com
Jon Schefers 320/260-5436
Mike Menendez 845/598-8499*

Terms: Cash unless prior arrangements are made specifically with seller and sale management is advised of these special terms in advance of the sale.

STANTONS MAIN EVENT 11596146C
GTPI +2579
PTA +1426M +77F +56P 75%R 8/2014
PTA +906NM +.10%F +.05%P 100%US
PTA +6.8PL 2.65SCS +2.6DPR 5.6%DCE
PTA +3.15T +2.94UDC +3.06FLC 73%R 8/2014

LARCREST MS CHANDA-ET 57187380
99%RHA TV TL TY TD
VG-85 +VV+V 2-05
GTPI +2439 / GLPI +3206 / DGV +3297
PTA +1930M +89F +67P 77%R 8/2014
PTA +875NM +.07%F +.03%P
PTA +5.9PL 2.96SCS +1.0DPR 3.8%DCE
PTA +2.33T +2.06UDC +2.07FLC 77%R 8/2014
2-05 2 137 11712 4.0 467 3.1 362 (Inc)
• Tremendous flush heifer - 87 implants
• The #5 GTPI Cow in the Breed!
• The #2 Robust in the World!
• Her AltaOak daughter sold for \$165,000 in the 2014 International Intrigue Sale.

MOUNTFIELD SSI DCY MOGUL-ET 840
3006972816 TR TV TL TY TD
GTPI +2394
PTA +2.95T +3.06UDC +2.91FLC 78%R 8/2014
STANTONS SUPER ELDA 11084001C
GP-83-2Y CAN
2-01 3 365 31343 4.1 1274 3.3 1038

ROYLANE SOCRA ROBUST-ET
649667.39 TR TV TL TD
VG-88 VVVV 3-03 GM GTPI +2347
LARCREST CHENOVA-ETS 56264510
99%RHA
VG-87 VVVVV DOM 3-00 GTPI +2157
PTA +1349M +65F +47P 83%R 8/2014
PTA +593NM +.06%F +.02%P
PTA +4.0PL 2.85SCS +4DPR 6.0%DCE
PTA +2.57T +1.86UDC +1.24FLC 83%R 8/2014
2-04 2 365 35930 4.1 1487 3.5 1259

3rd Dam: Larcrest Crimson-ET
(2E-92 EEEEE GMD DOM)
2-02 2 365 36060 4.7 1710 3.7 1351
4th Dam: Larcrest Cosmopolitan
(VG-87 E+VVV GMD DOM)
2-04 2 365 30930 4.1 1261 3.6 1119
• Bulls & Embryos sold Worldwide
5th Dam: Larcrest Oside Champagne-TW
(EX-90 EVVVE GMD DOM)
2-03 2 365 29110 4.5 1322 3.7 1077
6th Dam: Larcrest Juror Chanel
(3E-93 EEEEE GMD DOM)
9-00 2 365 48460 4.0 1943 3.4 1648
Over 250,000 Lifetime
7th Dam: Larcrest Lindy Chandra (VG-85)
2-05 2 365 20896 4.8 993 3.8 803
8th Dam: Larcrest Inspiration Carly
(VG-87 EEVVV)
3-05 2 305 21800 4.5 973 3.3 802



**KHW Regiment Apple-Red-ET (3E-96 EEEEE DOM)
Dam of Lot 18**

Choice of Atwood Female

From 10 Remaining Females! 13 Total Born Early September 2014!

*• 1st & 2nd choice sold as a package in the
Day at the Derby Sale for \$77,000!*

*• 3rd Choice sold for \$31,000 in the 2014 Planet Holstein Sale
• Min. Starting Bid \$30,000*

*Apple Partners
10974 Benson Road
Lanark, IL 61046
815/493-6445*

**Full Age Red Carrier
Atwood from Apple!**

Terms: Standard ET Terms unless special ET terms are approved by seller or sale management prior to the sale.
(35% Down/balance due 3-4 months of age)

18

• All calves are uniformly outstanding!

**MAPLE-DOWNS-I G W ATWOOD-ET
8956379C TR TV TL TY TD**
EX-90 EE+V 4-06 GTPI +1910
PTA +325M +48F +15P 99%R 8/2014
PTA +171NM +.14%F +.02%P 67%US
PTA +.0PL 2.98SCS -2.7DPR 8.8%DCE
PTA +4.79T +3.54UDC +3.86FLC 99%R 8/2014

**KHW REGIMENT APPLE-RED-ET
135511521 CV**

EX-96 EEEEE 3E DOM 9-06
4-01 2 365 35750 4.7 1682 3.7 1314
7-00 2 365 33280 5.0 1654 3.6 1191
LIFE 1972 158680 4.8 7683 3.8 6034
*2nd 125,000lb. Cow WDE R&W Show 2014
2013 HI Red Impact Cow of the Year
Unanimous All-American R&W 125,000lb. Cow '13
Res Grand Champion, WDE R&W Show 2013
Grand Champion, WDE R&W Show 2011
All-American R&W Aged Cow 2011
HI World Champion R&W Cow 2010
Unanimous All-American Jr 2-Yr-Old 2006
All-American R&W Jr 2-Yr-Old 2006
HHM All-American Jr 3-Yr-Old 2007
Nom All-American R&W 5-Yr-Old 2009
\$1,000,000 Sale Topper Global Glamour 2008*

BRAEDALE GOLDWYN 10705608C TL
CAN GP-84-8Y Extra GM GTPI +1863
**MD-DELIGHT DURHAM ATLEE-ET
131704103**

EX-92 EEEEE GMD DOM 4-06
3-11 2 365 38290 5.5 2091 3.3 1249
All-American Sr. 3-Year-Old 2005

**CARROUSEL REGIMENT-RED-ET
128891296 TV TL**

GTPI +1257
**KAMPS-HOLLOW ALTITUDE-ET
129136431 RC CV**

EX-95 EEEEE 2E DOM 7-09
7-00 2 365 39690 4.7 1849 3.5 1385
4-03 2 365 30430 4.2 1267 3.1 956
2-00 2 365 28830 3.8 1097 3.5 1013
LIFE 1844 144460 4.4 6295 3.7 5288
*• Red Impact Cow of the Year 2009
• Wisconsin Cow of the Year 2009
• Dam of KHW Kite Advent-Red-ET (EX-94)*

3rd Dam: Clover-Mist Alisha-ET
(3E-93 EEEEE GMD DOM)
5-03 3 365 34670 4.8 1654 3.3 1154
LIFE 2999 226470 4.7 10659 3.6 8149
4th Dam: Clover-Mist Augy Star-ET *RC
(4E-94 EEEEE DOM)
7-10 3 365 43140 5.0 2136 3.3 1421
LIFE 2486 206250 4.7 9793 3.5 7187
5th Dam: D-R-A August
(4E-96 EX-MS DOM)
8-05 3 365 27460 4.3 1187 3.2 871
LIFE 3443 190200 4.4 8281 3.3 4457
Nom. All-American Aged Cow '86
All-Wisconsin Aged Cow '87
6th Dam: D-R-A Ideal Precious Leader
(2E-90 EX-MS)
7-06 2 358 20090 3.9 787 3.2 637
LIFE 2456 133250 4.0 5308
7th Dam: D-R-A Princess Lad Leader (3E-90)
9-05 2 305 19160 4.2 809



Seagull-Bay Manat Mirage-ET (EX-90 EX-MS DOM)
2nd Dam of Lot 19

19 Triplecrown Alright 756-ET *TL *TD

Born 6/8/2014 Reg. 73517014 100%RHA
 13K GTPI +2537

PTA +1400M +80F +64P 74%R 8/2014
 PTA +868NM +.11%F +.08%P
 PTA +6.3PL 2.85SCS +1.3DPR 4.9%DCE
 PTA +3.27T +2.89UDC +2.88FLC 74%R 8/2014

Triple Crown Genetics
 427 Pheasant Rd
 Jerome, ID 83338
 208/221-0904

Terms: Cash unless prior arrangements are made specifically with seller and sale management is advised of these special terms in advance of the sale.

VISION-GEN ALRIGHT-ET 71630782
99%RHA TV TL TY TD
 GTPI +2394
 PTA +1629M +66F +49P 77%R 8/2014
 PTA +825NM +.02%F +.00%P 100%US
 PTA +7.2PL 2.72SCS +1.6DPR 4.0%DCE
 PTA +2.64T +2.31UDC +2.00FLC 76%R 8/2014

LADYS-MANOR PL SHAMROCK-ET
68977120 TR TV TL TY TD
 VG-88 EVE+ 4-10 GTPI +2141
VISION-GEN SH FRD A12326-ET
69517662
 GP-83 VVGG+ 4-00
 2-02 2 305 21890 3.5 762 3.3 724

SEAGULL-BAY OMAN MIRROR-ET
62115945
 VG-86 +VVVV DOM 3-09 GTPI +2126
 PTA +717M +75F +53P 93%R 8/2014
 PTA +598NM +.18%F +.12%P
 PTA +2.0PL 2.94SCS +9DPR 6.2%DCE
 PTA +1.74T +1.58UDC +1.80FLC 91%R 8/2014
 1-11 2 340 29320 4.2 1230 3.5 1026
 3-00 2 365 36430 4.4 1606 3.6 1304

O-BEE MANFRED JUSTICE-ET
122358313 TR TV TL TD
 EX-94 EEEE 7-07 GM GTPI +1941
SEAGULL-BAY MANAT MIRAGE-ET
60401993
 EX-90 VEVVE DOM 4-01 GTPI +1787
 PTA +606M +40F +24P 94%R 8/2014
 PTA +333NM +.07%F +.02%P
 PTA +1.42T +1.59UDC +1.01FLC 91%R 8/2014
 2-01 3 365 33210 4.2 1395 3.4 1121
 3-06 3 365 35900 3.8 1364 3.4 1229
 • Sold for \$20,000 in the Seagull Bay Dispersal
 • 1 EX & 26 VG Daughters

3rd Dam: Lynmead Cleitus Minnow-ET
 (2E-91 EEEVV GMD DOM)
 4-10 3 365 49550 3.7 1857 3.2 1592
 7-00 3 365 47140 3.5 1637 3.1 1479
 LIFE 2626 255910 3.7 9446 3.3 8481
4th Dam: CMV Belwood Mindy-ET
 (VG-85 GMD DOM)
 4-01 2 365 36341 3.6 1305 3.4 1239
5th Dam: Briarpatch-R Misty-ET
 (VG-85 GMD DOM)
6th Dam: Rilara Mars Las Ravena
 (EX-91 GMD DOM)
 4-03 2 305 29030 4.6 1329
7th Dam: Rag Apple Locust-Grove Charm
 (VG-86 GMD DOM)
 5-02 2 26321 3.6 948



S-S-I Shamrock Menna7392-ET (VG-85 VG-MS 2y)
Dam of Lot 20

20

Peak Menna Mdnt 874-ET

Born 8/10/2014 Reg. 840 3125475830 100%RHA

GTPI +2457 / GLPI +3190 / DGV +3304

PTA +1377M +74F +50P 72%R 10/2014

PTA +898NM +.08%F +.03%P

PTA +8.0PL 2.60SCS +2.2DPR 5.5%DCE

PTA +2.40T +2.05UDC +2.40FLC 70%R 10/2014

CAN GPA +1335M +75F +58P +10C +10MS +12FL

• *The #6 GTPI Midnight in the World!*

PEAK Genetics

Watertown, WI 53094

Kyle Demmer 563/451-5376

kyle.demmer@altagenetics.com

Jon Schefers 320/260-5436

Mike Menendez 845/598-8499

Terms: Cash unless prior arrangements are made specifically with seller and sale management is advised of these special terms in advance of the sale.

S-S-I EPIC MIDNIGHT-ET

840 3009554689 TV TL TY TD

GTPI +2411

PTA +1791M +78F +63P 77%R 8/2014

PTA +866NM +.04%F +.03%P100%US

PTA +7.1PL 2.67SCS +1.6DPR 6.2%DCE

PTA +1.86T +1.79UDC +1.76FLC 73%R 8/2014

S-S-I SHAMROCK MENNA7392-ET

840 3008328790 TV TL TY TD

VG-85 +VGVV 2-06 GTPI +2278

PTA +995M +65F +31P 80%R 8/2014

PTA +785NM +.11%F +.00%P

PTA +7.1PL 2.70SCS +2.6DPR 4.4%DCE

PTA +2.19T +1.87UDC +1.56FLC 78%R 8/2014

1-11 2 365 26870 4.1 1090 3.0 810

GENERATIONS EPIC-ET 11104016C

TV TL TY TD

EX-92 CAN GTPI +2214

ROYLANE SOCRA MIRA 1760-ET

64966736 TL TY TD TV

EX-90 EEVVE 5-03

3-11 3 305 38790 4.2 1617 3.2 1257

LADYS-MANOR PL SHAMROCK-ET

68977120 TR TV TL TY TD

VG-88 EVE+ 4-10 GTPI +2141

ROYLANE SHOT MINDY 2079-ET

66782907

VG-86 VVVVVV DOM 3-05 GTPI +2246

PTA +901M +70F +44P 88%R 8/2014

PTA +697NM +.14%F +.06%P

PTA +4.7PL 2.71SCS +2.1DPR 6.6%DCE

PTA +2.22T +1.92UDC +1.13FLC 86%R 8/2014

2-02 3 305 28730 4.4 1263 3.5 1018

3rd Dam: Seagull-Bay Oman Mirror-ET

(VG-86 +VVVV DOM)

3-00 2 365 36430 4.4 1606 3.6 1304

4th Dam: Seagull-Bay Manat Mirage-ET

(EX-90 VEVVE DOM)

3-06 3 365 35900 3.8 1364 3.4 1229

• Sold for \$20,000 in the Seagull Bay Dispersal

• 1 EX & 26 VG Daughters

5th Dam: Lynmead Cleitus Minnow-ET

(2E-91 EEEVV GMD DOM)

4-10 3 365 49550 3.7 1857 3.2 1592

7-00 3 365 47140 3.5 1637 3.1 1479

LIFE 2626 255910 3.7 9446 3.3 8481

6th Dam: CMV Belwood Mindy-ET

(VG-85 GMD DOM)

4-01 2 365 36341 3.6 1305 3.4 1239

7th Dam: Briarpatch-R Misty-ET

(VG-85 GMD DOM)

8th Dam: Rilara Mars Las Ravena

(EX-91 GMD DOM)

4-03 2 305 29030 4.6 1329

9th Dam: Rag Apple Locust-Grove Charm

(VG-86 GMD DOM)

5-02 2 26321 3.6 948



Larcrest Cale-ET (VG-89 EX-MS DOM)
2nd Dam of Lot 21

21

Ms Lineman Calypso-ET

Born 8/31/2014 Reg. 840 3125613859 99%RHA

GTPI +2468 / GLPI +3297 / DGV +3342

PTA +2093M +93F +70P 72%R 10/2014

PTA +847NM +.06%F +.03%P

PTA +4.6PL 2.58SCS -.1DPR 6.2%DCE

PTA +3.00T +2.48UDC +2.39FLC 69%R 10/2014

CAN GPA +2093M +97F +76P +14C +12MS +11FL

• **The #1 GTPI Lineman in the WORLD!!**

*Canto Syndicate
 2721 Dickens Dr
 Springfield, IL 62711
 217/341-2437*

Terms: Cash unless prior arrangements are made specifically with seller and sale management is advised of these special terms in advance of the sale.

COMESTAR LINEMAN-ET 107870104C

TR TV TL TY TD

GTPI +2463

PTA +1199M +71F +50P 75%R 8/2014

PTA +823NM +.10%F +.05%P 100%US

PTA +5.3PL 2.50SCS +1.0DPR 5.5%DCE

PTA +3.24T +3.28UDC +2.79FLC 73%R 8/2014

LARCREST CANTO-ET 58591952

99%RHA TL TD

9K GTPI +2534

PTA +2196M +98F +79P 72%R 8/2014

PTA +857NM +.06%F +.05%P

PTA +4.9PL 2.67SCS -.1DPR 5.4%DCE

PTA +3.51T +2.29UDC +2.13FLC 72%R 8/2014

• 2 Daughters over +2500 GTPI!

MOUNTFIELD SSI DCY MOGUL-ET 840

3006972816 TR TV TL TY TD

GTPI +2467

COMESTAR LAUTAMAI MAN O MAN-ET

106676836C

VG-87-2Y CAN GTPI +2144

2-01 2 365 40339 4.2 1684 3.4 1371

SEAGULL-BAY SUPERSIRE-ET 69981349

TV TL TY TD

VG-87 VVVV 3-07 GTPI +2444

LARCREST CALE-ET 56265400 99% RHA

VG-89 VEEVE DOM 3-01 GTPI +2324

PTA +734M +69F +50P 81%R 8/2014

PTA +701NM +.16%F +.10%P

PTA +4.6PL 2.72SCS +.5DPR 5.4%DCE

PTA +3.17T +2.88UDC +1.73FLC 82%R 8/2014

2-02 2 365 41710 5.3 2204 3.8 1566

5th Nat'l Fat & 1st MN Fat

3rd Dam: Larcrest Crimson-ET
 (2E-92 EEEEE GMD DOM)
 2-02 2 365 36060 4.7 1710 3.7 1351
4th Dam: Larcrest Cosmopolitan
 (VG-87 E+VVV GMD DOM)
 2-04 2 365 30930 4.1 1261 3.6 1119
 • Bulls & Embryos sold Worldwide
5th Dam: Larcrest Oside Champagne-TW
 (EX-90 EVVVE GMD DOM)
 2-03 2 365 29110 4.5 1322 3.7 1077
6th Dam: Larcrest Juror Chanel
 (3E-93 EEEEE GMD DOM)
 9-00 2 365 48460 4.0 1943 3.4 1648
 Over 250,000 Lifetime
7th Dam: Larcrest Lindy Chandra (VG-85)
 2-05 2 365 20896 4.8 993 3.8 803
8th Dam: Larcrest Inspiration Carly
 (VG-87 EEVVV)
 3-05 2 305 21800 4.5 973 3.3 802



Roorda Obsvr Majic 15272-ET (VG-85 VG-MS)
Full Sister to the 2nd Dam of Lot 22

22

WFC Lineman Madonna-ET

Born 8/24/2014 Reg. 840 3125613875 100%RHA

GTPI +2421 / GLPI +3281 / DGV +3363

PTA +2002M +107F +61P 71%R 10/2014

PTA +859NM +.13%F +.01%P

PTA +4.7PL 2.63SCS -.1DPR 6.0%DCE

PTA +2.65T +2.50UDC +1.63FLC 68%R 10/2014

CAN GPA +2249M +115F +73P +11C +13MS +8FL

• **The #2 Lineman in the WORLD!! HUGE FAT & MILK!!**

Todd Widholm
 2897 N 300 E Rd
 Clifton, IL 60927
 815/228-0591

Terms: Cash unless prior arrangements are made specifically with seller and sale management is advised of these special terms in advance of the sale.

COMESTAR LINEMAN-ET 107870104C

TR TV TL TY TD

GTPI +2463

PTA +1199M +71F +50P 75%R 8/2014

PTA +823NM +.10%F +.05%P 100%US

PTA +5.3PL 2.50SCS +1.0DPR 5.5%DCE

PTA +3.24T +3.28UDC +2.79FLC 73%R 8/2014

ROORDA SS MCCARI 15884-ET

71013758 TY TD TL

GTPI +2421

PTA +2580M +97F +77P 71%R 8/2014

PTA +823NM +.01%F +.00%P

PTA +4.6PL 2.89SCS -.2DPR 5.3%DCE

PTA +2.61T +2.34UDC +1.29FLC 71%R 8/2014

MOUNTFIELD SSI DCY MOGUL-ET 840

3006972816 TR TV TL TY TD

GTPI +2467

COMESTAR LAUTAMAI MAN O MAN-ET

106676836C

VG-87-2Y CAN GTPI +2144

2-01 2 365 40339 4.2 1684 3.4 1371

SEAGULL-BAY SUPERSIRE-ET 69981349

TV TL TY TD

VG-87 VVVV 3-07 GTPI +2444

ROORDA OB MCKENZIE 15267-ET

70338772

GTPI +2274

PTA +1222M +57F +39P 77%R 8/2014

PTA +700NM +.05%F +.01%P

PTA +5.7PL 2.81SCS +1.3DPR 4.9%DCE

PTA +2.82T +3.20UDC +1.17FLC 77%R 8/2014

• Full Sister to Roorda Obsvr Majic 15272-ET (VG-85 VG-MS 2y), Sold for \$55,000 in the 2011 Destination Vegas Sale

3rd Dam: Roorda Shottle 6802-ET

(VG-85 V+VVV DOM 2Y)

2-00 3 365 32590 3.6 1180 3.1 1000

4th Dam: Seagull-Bay Manat Mirage-ET

(EX-90 VEVVE DOM)

3-06 3 365 35900 3.8 1364 3.4 1229

• Sold for \$20,000 in the Seagull Bay Dispersal

• 1 EX & 26 VG Daughters

5th Dam: Lynmead Cleitus Minnow-ET

(2E-91 EEEVV GMD DOM)

4-10 3 365 49550 3.7 1857 3.2 1592

7-00 3 365 47140 3.5 1637 3.1 1479

LIFE 2626 255910 3.7 9446 3.3 8481

6th Dam: CMV Belwood Mindy-ET

(VG-85 GMD DOM)

4-01 2 365 36341 3.6 1305 3.4 1239

7th Dam: Briarpatch-R Misty-ET

(VG-85 GMD DOM)

8th Dam: Rilara Mars Las Ravena

(EX-91 GMD DOM)

4-03 2 305 29030 4.6 1329

9th Dam: Rag Apple Locust-Grove Charm

(VG-86 GMD DOM)

5-02 2 26321 3.6 948



Stone-Rail Mogul Sparkle-ET
Dam of Lot 23



Pine-Tree Planet Suele-ET
(VG-85 VG-MS 2Y)
2nd Dam of Lot 23

23

1st Choice Hot Rod Female

From Next Flush to Hot Rod

• Built in PA +2543 GTPI

• Seller guarantees at least 2 females to choose from
 or at least 1 over PA

Mike, Mark & Dr. Matt Iager
c/o Dr. Matt Iager
20608 Mill Point Rd.
Boonsboro, MD 21713
301/331-2203

Terms: Standard ET Terms unless special ET
 terms are approved by seller or sale management-
 prior to the sale.
 (35% Down/balance due 3-4 months of age)

GLEN-D-HAVEN ALTAHOTROD

55618778 TV TL TY TD

77K GTPI +2592

PTA +2720M +114F +90P 74%R 8/2014

PTA +860NM +.05%F +.03%P100%US

PTA +3.1PL 2.86SCS +2DPR 5.1%DCE

PTA +3.44T +2.73UDC +2.14FLC 73%R 8/2014

DE-SU JEROD 1223-ET 69990187

TV TL TY TD

VG-85 V+E+ 3-05 GTPI +2299

PTA +2.31T +2.32UDC +.67FLC 77%R 8/2014

GLEN-D-HAVEN IOTA BAMBI-ET

56517166

VG-85 V+V+V 3-00

2-02 3 305 34220 4.4 1522 3.5 1212

STONE-RAIL MOGUL SPARKLE-ET

72123317 TL TY TD

9K GTPI +2494

PTA +1764M +70F +52P 73%R 8/2014

PTA +878NM +.02%F +.00%P

PTA +6.7PL 2.49SCS +1.9DPR 5.6%DCE

PTA +2.93T +2.69UDC +2.79FLC 72%R 8/2014

• Sold for \$62,500 in the National Sale

• Embryo making machine!

• Her 1st Class/Supershot Choice sold for \$30,000
 in the 2014 Day at the Derby Sale

MOUNTFIELD SSI DCY MOGUL-ET 840

3006972816 TR TV TL TY TD

GTPI +2467 (8/14)

PINE-TREE PLANET SUELE-ET

66882483

VG-85 V+V+V 2-08 GTPI +2008

PTA +1388M +32F +38P 80%R 8/2014

PTA +553NM +5.3PL 2.60SCS +1.5DPR 6.9%DCE

PTA +1.77T +1.20UDC +.96FLC 81%R 8/2014

2-00 3 365 27350 3.5 965 3.1 852

3rd Dam: Pine-Tree Bret 1401

(VG-88 EX-MS)

3-02 3 305 33050 4.0 1328 3.1 1021

LIFE 1700 155940 3.6 5591 3.0 4712

4th Dam: Pine-Tree Lynch 361

(VG-86)

4-11 3 365 42560 3.2 1366 3.1 1336

LIFE 1769 162610 3.4 5573 3.2 5218

5th Dam: Pine-Tree Stardom 873

(VG-85)

3-09 23 365 30840 4.3 1314 3.2 972

LIFE 1640 137280 4.1 5649 3.0 4179



Windy-Knoll-View Panini-ET (EX-95)
Maternal Sister to the 2nd Dam of Lot 24



Windy-Knoll-View Princess
Dam of Lot 24



Windy-Knoll-View Pledge-ET
(3E-95 EEEEE GMD DOM)
3rd Dam of Lot 24

24

1st Choice Hot Rod Female

From Next Flush to Hot Rod

• *Built in PA +2481 GTPI*

• *Seller guarantees at least 2 females to choose from or at least 1 over PA*

*Mike, Mark & Dr. Matt Iager
 c/o Dr. Matt Iager
 20608 Mill Point Rd.
 Boonsboro, MD 21713
 301/331-2203*

Terms: Standard ET Terms unless special ET terms are approved by seller or sale management prior to the sale.
 (35% Down/balance due 3-4 months of age)

GLEN-D-HAVEN ALTAHOTROD
55618778 TV TL TY TD
 77K GTPI +2592
 PTA +2720M +114F +90P 74%R 8/2014
 PTA +860NM +.05%F +.03%P100%US
 PTA +3.1PL 2.86SCS +.2DPR 5.1%DCE
 PTA +3.44T +2.73UDC +2.14FLC 73%R 8/2014

DE-SU JEROD 1223-ET 69990187
TV TL TY TD
 VG-85 V+E+ 3-05 GTPI +2299
 PTA +2.31T +2.32UDC +.67FLC 77%R 8/2014
GLEN-D-HAVEN IOTA BAMBI-ET
56517166
 VG-85 VVGVV 3-00
 2-02 3 305 34220 4.4 1522 3.5 1212

WINDY-KNOLL-VIEW PRINCESS
72474079 TL TD TY
 9K GTPI +2370
 PTA +2007M +52F +63P 72%R 8/2014
 PTA +790NM -.08%F +.01%P
 PTA +6.6PL 2.67SCS +1.2DPR 3.9%DCE
 PTA +2.40T +1.99UDC +1.60FLC 72%R 8/2014
 • *Potential 6th Generation VG or EX!*
 • *Her 1st Choice Female sold for \$18,200 in the 2014 Day at the Derby Sale*

SEAGULL-BAY SUPERSIRE-ET 69981349
TV TL TY TD
 VG-87 VVVV 3-07 GTPI +2444
WINDY-KNOLL-VIEW PIANO-ET 70312785
 VG-85 +E+++ 2-07 GTPI +1786
 2-01 2 365 30990 3.2 1006 3.0 932
Maternal Sister to:
 ~Windy-Knoll-View Prairie-ET (EX-92 GMD DOM)
 4-08 2 365 43890 3.7 1632 3.0 1296
 LIFE 1461 136360 3.8 5190 3.1 4201
 ~Windy-Knoll-View Panini-ET (EX-95 EX-MS)
 Nominated All-American 5-Year-Old 2013

3rd Dam: Windy-Knoll-View Pledge-ET
(3E-95 EEEEE GMD DOM)
 4-01 2 365 41190 3.8 1577 3.0 1237
 LIFE 2513 217670 4.0 8681 3.2 7018
 1st 125,000lb./Grand, Eastern Fall Nat'1 '11
 Member Nom. All-American Best 3 2010
 Nom. All-American 125,000lbs 2009
 Res. All-American 125,000lb. 2008
 Unanimous All-American 5Y 2007
 Nom. All-American 4-Year-Old 2006
4th Dam: Windy-Knoll-View Promis-ET
(2E-95 GMD DOM)
 4-08 2 365 44124 3.7 1633 3.1 1401
 Res. All-American 5-Year-Old '03
 13 EX Daughters & 12 Sons in A.I.
5th Dam: Windy-Knoll-View Ultimate Pala
(3E-94 EX-MS DOM)
 5-08 2 365 27970 4.5 1267 3.3 932
 1st Eastern National Aged Dry Cow '92
 2nd Eastern National Produce of Dam '95
6th Dam: Windy-Knoll-View Creek Pauline
(VG-88 EX-MS)
 4-09 2 305 18960 3.6 690 3.0 573



Butlerview Uno Sho-Off-ET
Dam of Lot 25



Vision-Gen Sh Sho A12024-ET
(VG-85 VG-MS 2Y)
2nd Dam of Lot 25

25 Butlerview Sho-Off 5532-ET *TL *TD

Born 2/8/2014 Reg. 840 3010354074 100%RHA
 77K GTPI +2468 / GLPI +3106 / DGV +3200
 PTA +694M +57F +38P 72%R 8/2014
 PTA +903NM +.12%F +.06%P
 PTA +8.8PL 2.44SCS +2.7DPR 5.5%DCE
 PTA +2.56T +2.90UDC +2.10FLC 70%R 8/2014
 CAN GPA +69F +47P +10C +13MS

Ernest Kueffner
431 Potomac St
Boonsboro, MD 21713
301/639-2924

Terms: Cash unless prior arrangements are made specifically with seller and sale management is advised of these special terms in advance of the sale.

PEN-COL BELUGA-ET 70346730

TV TL TY TD
 GTPI +2433
 PTA +1646M +44F +49P 76%R 8/2014
 PTA +826NM -.05%F +.00%P 100%US
 PTA +7.4PL 2.47SCS +1.4DPR 5.8%DCE
 PTA +2.93T +3.15UDC +2.35FLC 76%R 8/2014

BUTLerview UNO SHO-OFF-ET
71494804 BL

50K GTPI +2394
 PTA +406M +58F +28P 74%R 8/2014
 PTA +753NM +.16%F +.06%P
 PTA +6.6PL 2.48SCS +2.5DPR 6.4%DCE
 PTA +3.29T +3.20UDC +2.59FLC 73%R 8/2014
 • Due 10-26-14 and looks very promising!
 • 4 daughters over +2400 GTPI!

CO-OP O-STYLE OMAN JUST-ET
137611441 TV TR TL TY

GM GTPI +2185
 PTA +2078M +41F +52P 99%R 8/2014
VISION-GEN SUPER BONNIE-ET
69517426
 VG-86 VVG+E DOM 2-09 GTPI +2211
 2-04 2 305 28730 3.7 1062 3.4 967

AMIGHETTI NUMERO UNO-ET
7990915143ITA TV TL TY TD

GTPI +2362
 PTA +2.83T +2.72UDC +1.85FLC 77%R 8/2014
VISION-GEN SH SHO A12024-ET 69517360
 VG-85 V+GVV 2-11 3K GTPI +2018
 PTA +409NM +.11%F +.03%P
 PTA +3.7PL 2.68SCS +1.2DPR 6.7%DCE
 PTA +3.24T +3.17UDC +2.55FLC 73%R 8/2014
 2-09 2 305 24331 4.5 1088 3.1 747 (Inc)
 • High Ranking GTPI for her age group!!
 • 2 Offspring over 2500 GTPI; +2581 GTPI & 3.95T!!
 And +2514 GTPI & 3.35T!!

3rd Dam: Ky-Blue GW Dana-ET
 (EX-91 EX-93-MS)

• Her 1st Choice Female sold for \$20,000 in the 2011 Maryland State Sale

4th Dam: BVK Outside Diana-ET
 (2E-92 EEEVE DOM)

5-01 2 365 31920 3.5 1129 3.2 1034

5th Dam: MS Kingstead Chief Adeen-ET
 (2E-94 EEEEE DOM)

3-05 2 310 30180 4.0 1209 3.6 1077
 LIFE 1382 100760 4.0 4010 3.6 3649

2x Nominated All-American
 2x Member of All-American Produce
 Queen of the Breed Finalist!

Full Sister to Adeen:
 Shoremar S Alicia-ET (3E-97 EEEEE)

6th Dam: C Aitkenbrae Starbuck Ada
 (2E-94 EEEEE DOM)

2-05 2 362 25000 3.6 908 3.4 845
 LIFE 1554 105150 3.4 3600 3.4 3554
 All-American Produce of Dam 2000 & 2001
 All-American Sr. 3-Year-Old 1990
 Res. All-Time All-American 3-Year-Old 2003
 1st 3-Yr-Old & Grand Champ Eastern Nat'l '90



Both Herges

Farnear-TBR-BH Varsity-ET
Dam of Lot 26

26

IHG Flame Varsity 9101-ET

Born 8/27/2014 Reg. 840 3125944623 99%RHA

GTPI +2465 GLPI +3309 / DGV +3365

PTA +1231M +84F +54P 72%R 10/2014

PTA +887NM +.15%F +.06%P

PTA +6.8PL 2.78SCS +2.9DPR 4.6%DCE

PTA +2.24T +1.92UDC +2.25FLC 69%R 10/2014

CAN GPA +1134M +93F +62P +9C +8MS +13FL

Innovative Holstein Genetics LLC
c/o Jeff Butler
1710 BE 7750 S. Road
Chebanse, IL 60922
217/341-2437

Terms: Cash unless prior arrangements are made specifically with seller and sale management is advised of these special terms in advance of the sale.

VIEUXSAULE FLAME-ET 71699265

99% RHA TV TL TY

50K GTPI +2503

PTA +641M +91F +45P 74%R 8/2014

PTA +868NM +.25%F +.09%P 100%US

PTA +6.4PL 2.61SCS +2.6DPR 5.5%DCE

PTA +2.94T +2.53UDC +2.49FLC 73%R 8/2014

FARNEAR-TBR-BH VARSITY-ET

71290935 TL TD

9K GTPI +2395 / GLPI +3275 / DGV +3371

PTA +1607M +83F +62P 72%R 8/2014

PTA +754NM +.09%F +.05%P

PTA +4.4PL 2.88SCS +1.1DPR 4.7%DCE

PTA +2.95T +2.44UDC +1.71FLC 72%R 8/2014

CAN GPA +1830M +91F +66P +11C +11MS

AMIGHETI NUMERO UNO-ET

7990915143ITA TV TL TY TD

GTPI +2362

VIEUXSAULE FRED FELICIA-ET

106759895C 99% RHA TY

VG-85-2Y CAN

2-06 2 336 26843 6.0 1607 4.0 1071

SEAGULL-BAY SUPERSIRE-ET 69981349

TV TL TY TD

GTPI +2444

PTA +2467M +112F +79P 77%R 8/2014

PTA +2.40T +1.68UDC +1.17FLC 77%R 8/2014

VISION-GEN SH SHO A12037-ET 69517373

VG-87 VVV+V 2-09 GTPI +2118

PTA +971M +44F +30P 77%R 8/2014

PTA +452NM +.03%F +.00%P

PTA +2.6PL 2.83SCS +1.1DPR 6.4%DCE

PTA +3.24T +3.02UDC +1.91FLC 78%R 8/2014

2-02 2 327 28300 3.7 1045 3.4 968

3rd Dam: Ky-Blue GW Dana-ET
 (EX-91 EX-93-MS)

• Her 1st Choice Female sold for \$20,000 in the 2011 Maryland State Sale

4th Dam: BVK Outside Diana-ET

(2E-92 EEEVE DOM)

5-01 2 365 31920 3.5 1129 3.2 1034

5th Dam: MS Kingstead Chief Adeen-ET

(2E-94 EEEEE DOM)

3-05 2 310 30180 4.0 1209 3.6 1077

LIFE 1382 100760 4.0 4010 3.6 3649

2x Nominated All-American

2x Member of All-American Produce

Queen of the Breed Finalist!

Full Sister to Adeen:

Shoremar S Alicia-ET (3E-97 EEEEE)

6th Dam: C Aitkenbrae Starbuck Ada

(2E-94 EEEEE DOM)

2-05 2 362 25000 3.6 908 3.4 845

LIFE 1554 105150 3.4 3600 3.4 3554

All-American Produce of Dam 2000 & 2001

All-American Sr. 3-Year-Old 1990

Res. All-Time All-American 3-Year-Old 2003

1st 3-Yr-Old & Grand Champ Eastern Nat'l '90



Co-Op Bosside Yelonda-ET (GP-84 DOM)
3rd Dam of Lot 27

27

T-Spruce Halogen 8034-ET

Born 2/25/2014 Reg. 73455222 100%RHA
 9K GTPI +2412 / GLPI +3108 / DGV +3128
 PTA +1215M +43F +42P 70%R 8/2014
 PTA +849NM -.01%F +.02%P
 PTA +8.4PL 2.28SCS +2.4DPR 5.9%DCE
 PTA +2.37T +2.88UDC +1.54FLC 68%R 8/2014
 CAN GPA +1517M +54F +57P +11C +12MS

Ernest Kueffner
 431 Potomac St
 Boonsboro, MD 21713
 301/639-2924

Terms: Cash unless prior arrangements are made specifically with seller and sale management is advised of these special terms in advance of the sale.

COOKIECUTTER PETRON HALOGEN
840 8710387 TV TL TY TD

GTPI +2487
 PTA +958M +54F +37P 75%R 8/2014
 PTA +882NM +.08%F +.03%P 100%US
 PTA +7.9PL 2.36SCS +3.7DPR 4.8%DCE
 PTA +2.88T +3.06UDC +1.21FLC 73%R 8/2014

BOSSIDE EPIC YINGA 71356468

9K GTPI +2364
 PTA +2017M +61F +64P 75%R 8/2014
 PTA +745NM -.05%F +.01%P
 PTA +5.5PL 2.65SCS +3DPR 5.8%DCE
 PTA +2.85T +2.32UDC +1.97FLC 72%R 8/2014
 • One of the highest Epic's in the Breed and one of the highest GTPI Females in the Breed for her age group!

WELCOME SUPER PETRONE-ET
69207641 TR TV TL TY TD

GTPI +2266
 PTA +2.28T +2.19UDC +1.51FLC 77%R 8/2014
COOKIECUTTER MOM HALO-ET
840 3007069733
 VG-88 VV+VE DOM 2-09 50K GTPI +2301
 2-00 3 365 35410 5.2 1832 3.5 1241

GENERATIONS EPIC-ET 11104016C
TV TL TY TD

EX-92 CAN GTPI +2214
BOSSIDE BOULDER BAILY-ET 69093237
 GP-83 ++V+V 3-07 GTPI +2023
 PTA +2035M +32F +53P 82%R 8/2014
 PTA +559NM +4.5PL 2.74SCS -.2DPR 5.6%DCE
 PTA +1.47T +1.42UDC +.90FLC 83%R 8/2014
 2-03 2 365 28240 3.2 909 3.3 921

3rd Dam: Co-Op Bosside Yelonda-ET
 (GP-84 DOM)
 2-00 2 365 28390 4.9 1386 3.6 1008
4th Dam: Coyne-Farms Yelena CRI -ET
 (VG-85 GMD DOM)
 1-11 3 365 36930 3.6 1336 3.2 1199
5th Dam: Milkworth Manfred Yadda
 (VG-86 GMD DOM)
 1-11 3 365 35730 4.0 1435 3.1 1092
6th Dam: Milkworth Megabuck Yen
 (GP-83 VG-MS)
 2-11 2 305 25380 3.8 1020 2.9 762
7th Dam: Milkworth Blackstar Nach-ET
 (GP-81 VG-MS)
 3-04 2 364 34690 3.3 1130 3.0 1050
8th Dam: Foxworth Secret Naples-ET
 (VG-86 GMD DOM)
 6-06 2 365 32830 3.6 1192 3.1 1010
9th Dam: Foxworth Tradition Nicolena
 (VG-87 DOM)
 9-01 2 365 33640 3.6 1197 3.0 1013
10th Dam: Ransom-Rail Nicki Combination
 (2E-90 GMD DOM)
 5-08 2 365 35390 4.0 1239



Silvermaple Damion Camomile (EX-95 EEEEE)
Dam of Lot 28

28

2nd Choice Atwood Female

- From 10 Atwood Females Due March 2015
- 1st Choice sold for \$16,200 in the 2014 Plnaet Holstein Sale

Jeff Butler
 1710 BE 7750 S. Road
 Chebanse, IL 60922
 217/341-2437

Terms: Standard ET Terms unless special ET terms are approved by seller or sale management prior to the sale.
 (35% Down/balance due 3-4 months of age)

MAPLE-DOWNS-I G W ATWOOD-ET
8956379C TR TV TL TY TD

EX-90 EE+V 4-06 GTPI +1910
 PTA +325M +48F +15P 99%R 8/2014
 PTA +171NM +.14%F +.02%P 67%US
 PTA +.0PL 2.98SCS -2.7DPR 8.8%DCE
 PTA +4.79T +3.54UDC +3.86FLC 99%R 8/2014

SILVERMAPLE DAMION CAMOMILE
9732453C

EX-95 EEEEE 5-07
 3-03 2 365 32268 4.1 1327 3.6 1159
 2-03 2 313 20119 4.0 796 3.5 705
 4-03 2 158 11350 4.7 538 4.0 451
 5-02 2 356 34879 4.2 1461 3.1 1091
1st 4-Year-Old & Grand Champion BC Spring Show 2012
All-Canadian Jr. 3-Yr-Old '11 & Jr. 2-Yr-Old '10
All-American Jr. 3-Yr-Old '11 & Jr. 2-Yr-Old '10
Int. Champion Royal Winter Fair 2011
Int.Champ World Dairy Expo 2011
Res.Grand World Dairy Expo 2011
1st Jr. 3-Yr-Old Royal Winter Fair 2011
 • Sold for \$290,000 in the 2012 International Intrigue Sale

BRAEDALE GOLDWYN 10705608C TL

CAN GP-84-8Y Extra GM GTPI +1863

MD-DELIGHT DURHAM ATLEE-ET
131704103

EX-92 EEEEE GMD DOM 4-06
 3-11 2 365 38290 5.5 2091 3.3 1249
All-American Sr. 3-Year-Old 2005

ERBACRES DAMION 130263722

TR TV TL TY TD

EX-96 EEEE 11-01 GTPI +1476
 PTA +3.06T +2.01UDC +3.02FLC 99%R 8/2014

STANHOPE CAMILA GOLDWYN
7807926C

VG-85-4Y CAN GTPI +1760
 4-01 2 365 30461 4.9 1486 3.3 1010
 3-01 2 321 22399 4.5 1003 3.5 791
 2-01 2 340 20697 4.4 913 3.4 697
 LIFE 4 Lact. 100651 4.7 4771 3.5 3481

3rd Dam: Kendu Triumphant Charity

(CAN EX-93 3*)
 3-04 2 365 28519 3.7 1065 3.1 888
 HM Grand Champion Vancouver Island '06
 2nd 5-Yr-Old Vancouver Island 2006

4th Dam: Kendu Broker Cleopatra

(CAN GP-83-2Y)
 3-01 2 321 22000 4.0 886 3.5 763

5th Dam: Elm Creft Tab Crystal

(CAN VG-88-8Y)
 6-11 2 365 27661 3.9 1069 3.2 888
 LIFE 6 Lact. 142649 4.0 5681 3.3 4744

Index

<i>Consignor</i>	<i>Lot #</i>
<i>Apple Partners</i>	<i>18</i>
<i>Butler, J., Maverick, D. Rudin & P. Carroll</i>	<i>11</i>
<i>Butler, Jeff</i>	<i>28</i>
<i>Canto Syndicate</i>	<i>21</i>
<i>Emerling Farm, LLC</i>	<i>13</i>
<i>Higher-Ransom Holsteins</i>	<i>1</i>
<i>Iager, Mike, Mark & Matt</i>	<i>23, 24</i>
<i>Innovative Holstein Genetics, LLC</i>	<i>14, 26</i>
<i>Kueffner, Ernest</i>	<i>25, 27</i>
<i>Marshfield Farms</i>	<i>12</i>
<i>Maverick Global Genetics & Callum Moscript</i>	<i>4</i>
<i>PEAK Genetics</i>	<i>2, 9, 15, 16, 17, 20</i>
<i>Pen-Col Farms</i>	<i>5, 6</i>
<i>Sandy-Valley</i>	<i>10</i>
<i>Seagull Bay Dairy, Inc.</i>	<i>8</i>
<i>Siemers Holstein Farms, Inc.</i>	<i>3</i>
<i>Triple Crown Genetics</i>	<i>19</i>
<i>Triple-Crown Genetics & Mitch Hockett</i>	<i>7</i>
<i>Widholm, Todd</i>	<i>22</i>

Notes



THORN CREEK

Insurance Services Inc.

- Global Livestock Mortality Insurance
- Global Livestock Export Transit Insurance
- Global "Insitu" Cover for Feedlots, Dairies and All Livestock Operations



Troy Alexander
3504 Peach Tree Drive
Springfield, IL 62711

Email: thorncreekins@mwii.net
Cell: 217.899.3426
ThornCreekInsurance.com

Bill Knight
171 Thornhill Drive
Danville, IL 61832

Email: thorncreekins@comcast.net
Cell: 217.260.5647
ThornCreekInsurance.com

Sales Terms and Conditions ~ Butler Auctions, LLC

SALE: All cattle, choice of offspring, or genetic material (embryos, semen, or other containing DNA) listed in the catalog that includes these terms ("Catalog") shall be offered for sale by auction to the highest bidder from the location and at the dates and times set forth at the front of the Catalog ("Sale"). All bidding is open to the public. Butler-Fellers Auction, Inc. ("Sale Management") will conduct the auction, settle any bidding disputes, and declare the winning bidder for all items in the Sale. In the event of a bidding dispute, the Sale Management reserves the right to rebid the item in dispute or take such other action it deems appropriate. The Sale Management's decision on all matters concerning the winning bidder and the amount bid shall be final. The winning bidder ("Buyer") agrees to purchase the item auctioned pursuant to the terms and conditions set forth herein.

Buyer should examine all animals purchased immediately after the purchase and before the close of the Sale, and if found not to be as represented, file a complaint with the Sale Management before the close of the Sale. If the Buyer does not file a complaint with the Sale Management before the conclusion of the Sale, the Buyer cannot challenge the representations of the Seller through the Sale Management. BUYER ASSUMES FULL OWNERSHIP OF ANIMALS AT SALE SITE TOGETHER WITH ALL RISKS.

Corrections and additions to the information in this Catalog may be made through printed updates made available at the Sale or by announcements from the auction stand prior to the auction of the item. Buyer shall be bound by terms of sale so announced.

By-Bidding. Bidding directly or indirectly by the sole owner of any animal or genetic material is prohibited unless the intention to bid is disclosed specific to each listing in the Catalog and announced when the animal or genetic material is auctioned. However, bidding by any member(s) of a partnership, syndicate, or other entity owning less than 100% ownership interest in the animal or genetic material is permitted.

Pedigree Information. All production, classification, type and production summaries are current. Only information recorded on Holstein Association USA pedigrees is used. Any production or classification records supplied by the Seller will be identified as being provided by Seller. Records in progress are identified as such.

Genomic Information. If genomic information on the animal or genetic material is available, it must be dated and disclosed at or before the time of sale.

Embryo Transfer. All registered animals or genetic material that have resulted from embryo transfer will be identified with one of the following suffixes in the name: ET, ETS (from split embryo), or ETN (from nuclear transfer). If unregistered, the appropriate technology will be identified. Donor dams shall also be identified.

PAYMENT TERMS:

General Payment Terms. Buyers are required to pay for purchases in cash or by check at the conclusion of the Sale, unless other payment terms are specifically: 1) stated in the Catalog or an Update Sheet distributed at the Sale; or 2) agreed to by both the Seller and the prospective buyer prior to the sale and Sale Management is notified in writing. Absentee Buyers purchasing through Sale Management or agents over the phone or otherwise are required to make payment on the business day following the Sale. There will be no exceptions to these payment requirements.

Choice of Flush Payment Terms. For any sale in which Buyer is purchasing the right to Buyer's choice of a calf from particular mating between a specific cow and bull ("Flush") of a particular sex and/or with specific characteristics ("Choice"), payments shall be required as follows:

35% Due at the conclusion of the sale; and

65% Due upon the earlier of Buyer's selection of the calf or 30 days after presentation of genomic test results for the youngest calf in the Flush.

Unless other payment terms are specifically: 1) stated in the Catalog or an Update Sheet distributed at the Sale; or 2) agreed to by both the Seller and the Buyer prior to the sale and Sale Management is notified in writing.

CHOICE OF FLUSH TERMS.

Selection. Seller shall promptly notify Buyer of the genomic testing results for each calf in the Flush that meets the criteria of the Choice. Buyer of the Choice shall select and take possession of the selected calf within 30 days of receipt of the genomic test scores for the youngest calf in the Flush ("Selection Period"). If Buyer fails

to make the selection within the Selection Period, Buyer will be deemed to have selected the calf with the highest GTPI score of the Flush that is sound, healthy, and meets the Choice criteria. Buyer shall pay Seller a boarding fee of \$10.00 per day for each day that Seller remains in possession of the Choice calf after the expiration of the Selection Period.

Buyer's Default on Choice. Should Buyer fail to take possession or make the payments required hereunder, Seller may proceed with any legal means necessary to enforce the terms hereunder. Seller may seek specific performance requiring the Buyer to complete the sale; file suit against Buyer for damages, including attorney's fees and court costs; or Seller, at its sole option, can terminate the contract for Buyer's failure to perform and Seller shall have no obligation to return Buyer's down payment. If the Buyer fails to make payment or take possession of the Choice Calf within 60 days after expiration of the Selection Period, the Seller may but shall not be obligated to sell the Choice calf at a public sale after providing Buyer written notice at least 10 days prior to such sale. Buyer shall be responsible for all costs associated with such sale.

Documentation and Exams. Seller of Choice shall complete all blood typing, health checks, and registrations of the calf prior to transfer. Upon selection of Choice by Buyer, Seller will promptly transfer the calf's registration and any other licensing or certificates to the Buyer's name.

Inability to Produce Choice. Should the specified Flush fail to produce a sound healthy calf of the sex and characteristics specified in the Choice and the Dam dies, becomes unable to produce embryos, or proves unable to produce sound healthy offspring, the Buyer shall be entitled to a refund from the Seller of the deposit paid for the Choice. No interest or any other reimbursements are due to Buyer.

Failure to Produce Choice. Should the specified Flush fail to produce a sound healthy calf of the sex and characteristics specified in the Choice, the Buyer shall have the option, in Buyer's sole discretion, to request in writing a refund of the deposit paid for the Choice or to fulfill the Choice from the next Flush of the Dam that is not committed to a third party (by choice or similar contract) at the time the first Flush fails and produces a sound healthy calf of the sex and with the characteristics specified in the Choice. The option to fulfill the Choice on a subsequent Flush shall only apply to the first uncommitted Flush from the Dam that includes a calf of the sex and with the characteristics specified in the Choice. If Buyer elects not to accept the qualifying calf as fulfillment of the Choice, the Buyer shall be entitled to a refund and shall have no further options to purchase under the Choice. Any agreement between the parties to alter these terms must be in writing and signed by both parties to be enforceable. Neither Buyer or Seller shall be responsible for reimbursing the other party for boarding fees, feed expenses, transportation expenses, or interest for the failure to produce Choice or the substitute calf. If the Buyer fulfills the Choice with a calf from an alternate Flush, the payment schedule will remain the same with respect to age of calf selected.

Any disputes regarding Choice purchases are strictly between Buyer and Seller. Sale Management is not liable for any failed Choice, and such failure will not entitle either party to a refund of any sale commission paid. Upon request Sale Management will mediate any dispute concerning Choice between the Buyer and Seller.

Failure to Meet Breeding Warranty. Should the calf selected by the Buyer under the Choice not meet the Breeding Warranty specified herein, the Seller will refund to Buyer the full purchase price paid for the Choice, less the salvage value of the animal. No boarding fee, feed expense, transportation expense, or interest is due from the Buyer or Seller.

WARRANTIES AND LIMITATIONS.

General Warranties and Limitations of Warranties. Except as specifically provided herein, the animals and genetic materials being auctioned at this Sale are being sold "As Is" and "Where Is" without representation, warranty, or guarantee as to quantity, quality, character, condition, size, or kind, or that it is in condition or fit to be used for the purpose for which intended.

Seller warrants and represents to Buyer and to Sale Management with respect to each animal and genetic material auctioned at the Sale, the following:

- 1) Seller has clear and merchantable title to the animal that is not subject to liens or encumbrances.
- 2) Seller has all rights and authority required to sell the animal at the Sale subject to the terms and conditions provided herein.

3) To the best of the Seller's knowledge, the animal is sound and healthy in every respect and embryos have been recovered, processed, frozen, transferred and graded in keeping with IETS recommendations unless otherwise noted in the Catalog, Update Sheet, or announced at the Sale. Every precaution will be taken to represent the physical condition of each animal exactly as is known. The condition of the Heifers' udders following calving for Heifers that have never calved is in no way guaranteed.

Breeding Warranty. Seller warrants to Buyer that the animals auctioned at the Sale are Breeders as specified below:

Males. A "Breeder" will produce semen capable of fertilizing a cow and that is freezable meeting A.I. standards. Bulls shall be considered a Breeder unless it reaches 18 months of age and fails to sire offspring after being used for 2 months on cows known to be Breeders or it fails a breeding soundness exam administered by a licensed veterinarian.

Females. A "Breeder" will be capable of conceiving by natural service, carrying, and giving birth to a calf. Any female between the ages of 21 months and 7 years when sold are guaranteed to be a Breeder with the exception of a female carrying a pregnancy that is the result of an embryo transfer.

Females bred prior to the Sale and pronounced "in calf" are presumed to be pregnant but the pregnancy of such animal is not guaranteed unless such guarantee is specified in the Catalog, Update Sheet, or announced at the Sale. The Seller makes no warranty that pregnant cows will deliver or carry the calf full term.

Claims. Buyer must make any claim under the Breeding Warranty by submitting a written claim to the Seller before the later of 3 months after the Sale or the animal reaches 20 months of age for males or 23 months of age for females. The written claim must include the animal's examination records, the steps taken to breed the animal, and a statement by a licensed veterinarian indicating the animal's inability to breed. Upon receipt of the claim, the Seller will have 6 months to determine the animal's breeding ability, through examination by a competent veterinarian or reproductive technician or by breeding the animal. During this examination period, the Buyer shall cooperate with any testing requested by Seller, at Seller's cost, and at Seller's request shall return the animal to the Seller. If the animal proves to be a Breeder, the Seller shall provide Buyer with such proof and the animal will be returned to the Buyer. All transportation of the animal shall be at Buyer's expense.

Limitation of Breeding Warranty. Unless the Buyer and Seller otherwise agree in writing, the Buyer's sole and exclusive remedy for the failure of Breeding Warranty is the refund of the purchase price, upon expiration of any applicable cure period, and return or disposition of the animal as directed by the Seller. The Breeding Warranty shall be void if the Buyer recovers embryos or oocytes or attempts to super-ovulate the animal, unless Buyer and Seller set out such a warranty in a separate written agreement.

Embryo Transfer Guarantee. Any embryo transfer guarantee or warranty is strictly between Buyer and Seller and shall be documented in a separate written agreement by the parties. Sale Management makes no guarantee as to the viability or transferability of any embryos auctioned at the Sale.

ALL WARRANTIES CONTAINED HEREIN, UNLESS TERMINATED EARLIER, WILL CEASE UPON THE RESALE OF AN ANIMAL OR GENETIC MATERIAL.

GENERAL TERMS

Conditional Contracts on Animals. Because of the elite genetic status within the Holstein breed of the animals and genetic materials sold through this Sale, Sellers often are able to secure conditional contracts for the calves being sold that are assignable to Buyer. Prospective buyers are encouraged to review such contracts prior to purchase. All such contracts are conditional with expirations and other specific criteria that the calf and the Buyer must meet for the contract to become effective. It is the Buyer's responsibility to be aware of the terms of any such contracts and to discuss the contract details with Seller (not Sale Management) prior to purchase.

Animals' Health. Seller will provide an Interstate Health Certificate to Buyer for animals sold at the Sale. Animals offered for sale have tested negative for: Brucellosis (except baby calves and official calfhood vaccinated females under 20 months old) and Tuberculosis (except calves under 4 months old) within 30 days of the Sale. If Seller has tested (not required) the animal for Blue Tongue, Leukosis, EHD, Johnes, Anaplasmosis, or BVD, Seller shall disclose the test results to prospective buyers upon request. Animals are not required to test negative for Blue Tongue, Leukosis, EHD, Johnes, Anaplasmosis, or BVD to be included in the Sale.

Buyer shall be solely responsible for ensuring that any calf it purchases at the Sale meets the health requirements of Buyer's State or Country. Prospective buyers should discuss the status of any required tests or inspection with Seller prior to purchase. Animals are not guaranteed to have been tested or to qualify for entrance into any particular State or Country. Any additional health testing required will be at Buyer's expense and results are not guaranteed.

Transfer of Registered Ownership. For all registered Holsteins and embryos, Seller, at its cost, will take all actions necessary to transfer ownership of the animal or embryo to the Buyer on the records of Holstein Association USA and a certificate of registration showing Buyer's ownership will be provided to the Buyer.

Transportation. Buyer is solely responsible for arranging and transporting any animal it purchases at the Sale. Sale Management will be available to assist Buyer in arranging transportation for animals purchased at the Sale. However, Buyer bears all costs, risks, and responsibility for the animal and its transportation.

Risk and Mortality Insurance. Seller shall be responsible for and bear the sole risk of the animal's injury or death until sold. Buyer assumes the risk of the animal's injury or death when Buyer is pronounced the winning bidder by the auctioneer. Insurance may be purchased at the Sale for Seller's protection before the Sale and for Buyer's protection after the Sale. Sale Management encourages everyone to ensure that they have appropriate insurance coverage. For purchases made on terms, the parties are encouraged to purchase insurance on the animal for at least the unpaid balance with Buyer and Seller listed as loss payee.

Errors and Omissions. The material in this Catalog has been carefully edited. If any errors or omissions are discovered, they will be corrected in an Update Sheet or announced at the Sale. Such Update Sheets or announcements at the Sale take precedence over the information printed in the Catalog.

Accidents. The Sale Management, the Seller, the Buyer, and the owner of the location of the Sale are not responsible for the condition of the grounds or the behavior of the animals and disclaim any liability in the event of personal accident or property loss.

Limitation of Liability. Except as otherwise provided herein, each party will use all reasonable efforts to meet the party's obligations hereunder, but in the unlikely event that a party is unable to fulfill its obligations hereunder for any reason, the parties agree that the other party's liability, in the absence of fraud, will not exceed the amount paid for the animal or genetic material and any reasonable transportation costs as provided hereunder. **UNDER NO CIRCUMSTANCES EXCEPT FRAUD WILL BUYER, SELLER, OR SALE MANAGEMENT BE LIABLE FOR LOST PROFITS OR ANY OTHER INCIDENTAL CONSEQUENTIAL, SPECIAL, OR PUNITIVE DAMAGES WHETHER IN CONTRACT OR TORT, INCLUDING, WITHOUT LIMITATION, NEGLIGENCE, STRICT LIABILITY, OR OTHERWISE WHICH ARISE OR MAY ARISE OUT OF OR RELATE TO THIS TRANSACTION.**

Severability of Invalid Terms. In the event any provision or portion of these terms and conditions is held to be invalid or unenforceable, such provision or portion thereof shall be severed herefrom, and the remaining provisions will remain in full force and effect, if the essential terms and conditions hereof remain valid.

Costs and Attorneys Fees. Except as otherwise expressly provided herein, each party shall pay its own costs and expenses in connection with the transactions contemplated herein. Notwithstanding the foregoing, all costs, expenses, and reasonable attorneys' fees incurred by the prevailing party in any action to interpret or enforce the party's rights under these terms and conditions may be recovered from the non-prevailing party.

Applicable Laws. The substantive laws of the State of Illinois (not its conflict of law principles) shall govern all matters arising out of, or relating to these terms and conditions and the transactions contemplated herein. Any action or proceeding seeking to enforce any provision of, or based on any right arising out of, the transactions contemplated herein may be brought by either party but only in the courts of the State of Illinois, or, if it has or can acquire jurisdiction, in the United States District Court sitting in Illinois, and each of the parties consents to the jurisdiction of such courts in any such action or proceeding and waives any objection to venue laid therein.

THE AFOREMENTIONED TERMS AND CONDITIONS SHALL CONSTITUTE A CONTRACT BETWEEN THE BUYER AND THE SELLER AND SHALL BE BINDING UPON BOTH.



Make plans now to attend the....

Destination Vegas Sale

Friday • December 12, 2014

Bellagio Resort & Spa, Las Vegas, NV

The Bellagio was inspired by the beautiful villages of Europe. The AAA 5-Diamond Award Resort overlooks an 8 acre Mediterranean blue lake where fountains perform a magical aquatic ballet. The Bellagio features top entertainment and has upscale shopping, a spectacular casino, a luxurious spa and other typical resort fare.



Hotel Features:

- 3933 Rooms and Suites
- 16 Restaurants / 9 Bars
- 6 Outdoor Heated Pools
- Conservatory & Botanical Gardens
 - Spa & Salon Bellagio
 - Cirque du Soleil's "O"
- Art Gallery / Bellagio Fountains
 - Casino / Bank



*Sale held in the Sensi Restaurant at Bellagio Hotel, private room
Hospitality at 5:30 pm • Sale & Hospitality at 6:00 pm*

For Hotel, Special Room Rates & Airline arrangements please contact:
Deidre's Travel Service • Phone: 816-444-0404 • dtravel@kc.rr.com



For more information or to consign to this exciting sale,
please contact any member of the sale staff below:

JEFF BUTLER, OWNER
2721 Dickens Dr.
Springfield, IL 62711
Phone: 217-341-2437 • Email: illinijet@aol.com



ED FELLERS, ASSISTING

Phone: 913-484-4121 • Email: edmondfellers@yahoo.com



Destination Naples Elite Holstein Sale

Ritz-Carlton Golf Resort • Naples, FL • 2015

Sale Day • Friday Jan. 30, 2015 • 4-5:30 PM Cocktail Reception • 5:30 – 7:30 PM Sale
Come Early!!! Stay Late!!! • Jan. 28th - Feb. 1st, 2015

For reservations please contact: Deidre Langseth

Deidre's Travel Service • Phone: 816-444-0404 • dtravel@kc.rr.com



Spring Fling-Scottsdale

Scottsdale, Arizona

Tuesday, March 3rd, 2014 - Wednesday, March 4th, 2014



Baseball

Seminar

Sale



Enjoy your favorite teams playing in the Cactus League!

Sale Headquarters:

The Westin Kierland Resort & Spa, Scottsdale, Arizona

For reservations contact: Deidre's Travel Service • Phone: 816-444-0404





POLLed Position #1

View-Home

POWER BALL -PO

EARNHARDT X VG86 ROBUST X VG87 ZENITH
back to Wesswood-HC Rudy Missy EX92 3E GMD DOM

534H000031

+2477 GTPI | +2.65 TYPE | +836 NM\$
+72 P | +1642 MILK | A2A2
CDN +3328 GLPI | +11 Conf

**#1 GTPI, GLPI, and gRZG
Polled sire in the world.**



DAM

Pine-Tree 2149Robst 4846-ET VG86 VEY+V
2-04 305P 26,400 5.2% 1400 3.1% 800
Owned by: Country Dairy, New Era, MI

**"The most impactful bull the
breed has ever experienced"**

Photo by Beth Herges. USDA/CDN/HA Genomic Evaluation 08/2014

 **jetstream**
GENETICS
moving genetics forward®

855.453.8787

www.jetstreamgenetics.com
info@jetstreamgenetics.com

 /JetstreamGenetics  @JetstreamGen

Jetstream Genetics semen is produced and collected at Alta Genetics



SALSA^{RC}

hot, spicy and red carrier

Ri-Val-Re **SALSA RC**-ET

534H000030 | CASHCOIN X VG MacGUINNESS X EX ADVENT

GTPI +2396 | +75 F | NM\$ +809 | TYPE +3.17

7.3 SCE | 2.41 SCS | +1.4 DPR | +6.5 PL

Dam: RI-VAL-RE MCGNSS Erin-ET RC VG85 88MS

2-01 2x 365 24497 4.8 1178 3.4 827

#2 RC sire
in the breed.

+3.17 TYPE

+3.64 UDC

GTPI +2396

**A New Release Red Carrier OUTCROSS Sire;
No Lawnboy, No O-Man, No MOM, No Sept Storm**

855.453.8787

www.jetstreamgenetics.com

info@jetstreamgenetics.com

[/JetstreamGenetics](#) [4 JetstreamGen](#)

Jetstream Genetics and its products are a collection of Alta Genetics





A *“Welcome to Toronto”*
Social Gathering Venue
with World Class Genetic
Offerings & Cutting Edge
Investment Opportunities!!