




*World's Finest Genetic  
Opportunities selling at the...*

# *Planet Holstein Sale*

*Thursday • October 1, 2015  
Hospitality 5:30 PM • Live Auction 6:30 PM  
Sheraton Hotel, Madison, WI*





*Thursday • October 1, 2015 • Live Auction 6:30 PM  
Sheraton Hotel, Madison, WI • 5:30-6:30pm Hospitality*

*Welcome  
to the....*

*Party*

*at the*

*Planet!!*

**Welcome to the Planet Holstein Sale & welcome to Madison, THE GREATEST HOLSTEIN SHOW ON EARTH!! I would like to thank all of our friends and colleagues from all over the World that have helped make Planet Holstein a “Welcome to Madison” social gathering event!!**

**There will again be presale & sale hospitality, making for a festive atmosphere to be enjoyed by dairy enthusiasts from around the globe. This event is just a short walk across the street from the World Dairy Expo grounds to the Sheraton Hotel, then up the stairs to the mezzanine ball rooms.**

**Butler Auctions, LLC has another outstanding group of Genetic Offerening again this year! Please make plans to join us on Thursday Evening, October 1st and add some elite investment opportunities to your breeding program.**

*Sincerely,*

*Jeff Butler*

# Planet Holstein Sale

Thursday • October 1, 2015

5:30-6:30 p.m. Hospitality • Live Auction starts at 6:30 p.m.

Sheraton Hotel, Madison, WI

## SALE ASSISTANT

Ed Fellers

Phone: 913-484-4121 • Email: edmondfellers@yahoo.com

## SALE CLERK

Nobel Harrison - 217-370-1451

## INSURANCE

Troy Alexander - 217-899-3426

## TRUCKING COORDINATOR

Joe Price

Phone: 765-618-5479 • Email: butlerview@hotmail.com

## SALE CATALOG

Jennifer Larrabee, jlarrabee@wildblue.net, 315.269.7192

Catalog will be online at...

[www.holsteinworld.com](http://www.holsteinworld.com)

[www.cowsmo.com](http://www.cowsmo.com)

[www.dairyagendatoday.com](http://www.dairyagendatoday.com)

[www.holsteininternational.com](http://www.holsteininternational.com)

[www.holsteinplaza.com](http://www.holsteinplaza.com)

SALE MANAGED BY:

# BUTLER AUCTIONS, LLC

JEFF BUTLER, OWNER

2721 Dickens Dr. • Springfield, IL 62711

Phone: 217-341-2437 • Email: illinijet@aol.com

## SALE STAFF

Chris Hill, auctioneer ..... Phone: 202/255-7907

Email: Salesflash@comcast.net

Roger Turner, pedigrees ..... Phone: 519-831-4164

Email: roger@jetstreamgenetics.com

Scott Culbertson ..... Phone: 507-923-1881

Email: scott.culbertson@peak-genetics.com

Jeff Butler ..... Phone: 217-341-2437

Email: illinijet@aol.com

Ed Fellers..... Phone: 913-484-4121

Email: edmondfellers@yahoo.com

Tom DeGroot..... Phone: 604-819-2879

Email: laurydegroot@yahoo.com

Brian Carscadden ..... Phone: 519-546-1194

Email: bcarscadden@semex.com

Simon Lalonde..... Phone: 514-239-5435

Email: ferme.blondin@sympatico.ca

Brian Craswell ..... Phone: 902-628-7537

Email: Brian@crasdalefarms.com

Ray LeBlanc..... Phone: 802-249-2155

Email: overlookn@gmail.com

Troy Yoder ..... Phone: 478-244-2172

Email: tyoder9@juno.com

Declan Patten ..... Phone: 815-370-9544

Email: declan.patten@butlerview.com

Joe Price ..... Phone: 765-618-5479

Email: butlerview@hotmail.com

Ashley O'Hara ..... Phone: 815-370-8713

Email: ashley.ohara@butlerview.com

Kyle Demmer ..... Phone: 563-451-5376

Email: kyle.demmer@altagenetics.com

Paul Trapp..... Phone: 608-332-0079

Email: Paul.Trapp@genusplc.com

**» ALL LIVE LOTS SELLING WILL SELL  
ABSENTEE WITH BUYER SATISFACTION  
GUARANTEED! BUYER PAYS TRUCKING  
FROM SELLERS FARM »**



# BUTLER AUCTIONS, LLC

## *2015 - 2016 Sale Schedule*

***Jetstream Global Greatness Sale... an International Event*** ..... Wednesday, November 11th

- Schedule of Events: 5:30-6:30pm Hospitality & 6:30-9:00pm Sale/Hospitality.
- Sale Headquarters: Westin Harbour Castle, 1 Harbour Square, Toronto, Ontario, M5J 1A6, Canada  
Phone: 416-869-1600. To get a special rate of \$159/night, go to <http://west.tn/1z00cUa> and follow instructions on booking a room.

***Destination Vegas Sale*** ..... Las Vegas, NV ..... Thursday, December 10th

- Sale Held at the Bellagio Resort & Spa ~ 4:30 PM Hospitality ~ 5:30 PM Sale
- For reservations contact: Deidre's Travel Service • Phone: 816-444-0404

***Destination Naples Sale*** ..... Naples, Florida ..... Friday, January 29th, 2016

- Sale Held at the Ritz Carlton Golf Resort.
- Join us for any day Wed., Jan. 27th - Sunday, January 31st, 2016
- For reservations & special rates contact: Deidre's Travel Service • Phone: 816-444-0404

***For more information or to consign to any of these sales please contact:***

# BUTLER AUCTIONS, LLC

**JEFF BUTLER, OWNER**  
2721 Dickens Dr. • Springfield, IL 62711  
Phone: 217-341-2437  
Email: [illinijet@aol.com](mailto:illinijet@aol.com)

**ED FELLERS, SALE ASSISTANT** • Phone: 913-484-4121 • Email: [edmondfellers@yahoo.com](mailto:edmondfellers@yahoo.com)



*KHW Regiment Apple-Red-ET (3E-96 EEEEE DOM)*  
Maternal Sister to the 2nd Dam of Lot 1



*Kamps-Hollow Altitude-ET (2E-95 EEEEE DOM)*  
3rd Dam of Lot 1



**Blondin TJR Supersire Aroma-ET**  
Dam of Lot 1



**KHW Regiment Apple-Red (3E-96)**  
Maternal Sister to the 2nd Dam of Lot 1

1

**Endco Sunfish Aspire-ET \*RC**

Born 6/15/2015 Reg. 840 3125945280 100%RHA

13K GTPI +2683 / GLPI +3387 / DGV +3539

PTA +2141M +85F +.02% +69P +.01% 72%R 8/2015

PTA +819NM +6.2PL 2.83SCS -.2DPR 5.5%DCE

PTA +2.34T +1.96UDC +1.04FLC 71%R 8/2015

CAN GPA +2697M +115F +104P +14C +13MS

• **The #5 GTPI Red Carrier in the World!**

- **Extreme for Milk & Protein among Red Carriers on both USA & Canadian formulas.**

**MR SUNVIEW COIN SUNFISH-ET**  
840 3012643773 RC

77K GTPI +2370

PTA +1834M +55F +54P 75%R 8/2015

PTA +552NM -.05%F +.00%P 100%US

PTA +3.2PL 2.75SCS -1.1DPR 6.8%DCE

PTA +2.19T +1.72UDC +.84FLC 74%R 8/2015

**BLONDIN TJR SUPERSIRE**  
**AROMA-ET 108535196C RC**

GTPI +2750 / GLPI +3360 / DGV +3533

PTA +1520M +81F +59P 76%R 8/2015

PTA +907NM +9.2PL 2.80SCS +2.1DPR 4.1%DCE

PTA +2.06T +1.72UDC +1.01FLC 76%R 8/2015

CAN GPA +1932M +108F +89P +11C +8MS +11R

• **The #1 \*RC Heifer in the World!!**

• **The #4 Supersire \*RC Heifer in the World!**

• **Due 10/15 and looks incredible!**

• **Making a huge impact Worldwide in both the red & white & black & white market places.**

• **Her Kingboy son, ENDCO KB Apprentice \*RC, +2784 GTPI, +889NM, +1650M +74F +54P +8.7PL +2.45T +2.12UDC 8/15.**

• **The #9 GTPI bull in the World & #1 RC in the World (9/15)**

**FARNEAR-TBR-BH CASHCOIN-ET**  
70354884 TV TL TY TD

GTPI +2276

**DYMENTHOLM SUNVIEW SUNDAY-ET**

11004730C RC

VG-87 VV+VV 2-09

2-01 2 305 26230 4.1 1070 3.3 873

**SEAGULL-BAY SUPERSIRE-ET 69981349**  
TV TL TY TD

VG-87 VVVV 3-07 GM GTPI +2715

**KHW ALCHEMY ADELINE-RED-ET**

141832531 TV

VG-85 ++++V 2-09 GTPI +2132

PTA +366NM +.18%F +.13%P

PTA +5.4PL 2.63SCS +2.0DPR 6.3%DCE

PTA +1.79T +2.06UDC +1.13FLC 81%R 8/2015

2-02 2 254 18080 4.4 795 3.8 687

• **Maternal Sisters to Adeline-Red:**

• **KHW Regiment Apple (3E-96 EEEEE DOM)**

Unan. All-American R&W 125,000lb. Cow 2013

• **KHW Goldwyn Aiko-ET (EX-91 EX-MS DOM)**

**Endeavor Holstein Genetics, LLC**  
1216 Melbrook Dr.  
Munster, IN 46321  
815-697-2700

[declan.patten@butlerview.com](mailto:declan.patten@butlerview.com)

Terms: Cash unless prior arrangements are made specifically with seller and sale management is advised of these special terms in advance of the sale.

**3rd Dam: Kamps-Hollow Altitude-ET**  
(2E-95 EEEEE DOM 1\*)

7-00 2 365 39690 4.7 1849 3.5 1385

LIFE 1844 144460 4.4 6295 3.7 5288

**4th Dam: Clover-Mist Alisha-ET**

(3E-93 EEEEE GMD DOM)

5-03 3 365 34670 4.8 1654 3.3 1154

LIFE 2999 226470 4.7 10659 3.6 8149

**5th Dam: Clover-Mist Augy Star-ET \*RC**

(4E-94 EEEEE DOM)

7-10 3 365 43140 5.0 2136 3.3 1421

LIFE 2456 133250 4.0 5308

**6th Dam: D-R-A August**

(4E-96 EX-MS DOM)

8-05 3 365 27460 4.3 1187 3.2 871

LIFE 3443 190200 4.4 8281 3.3 4457

Nom. All-American Aged Cow '86

All-Wisconsin Aged Cow '87

**7th Dam: D-R-A Ideal Precious Leader**

(2E-90 EX-MS)

7-06 2 358 20090 3.9 787 3.2 637

LIFE 2456 133250 4.0 5308

**8th Dam: D-R-A Princess Lad Leader (3E-90)**

9-05 2 305 19160 4.2 809



**Co-Op Bosside Yelonda-ET (VG-86 DOM)**  
**4th Dam of Lot 2**

**2 Endco Yoder L7933 9839-ET**

**Born 7/17/2015 Reg. 840 3125945361 100%RHA**

13K GTPI +2743 / GLPI +3404 / DGV +3578

PTA +1611M +105F +67P 8/2015

PTA +915NM +.17%F +.07%P +6.7PL 2.9SCS +.3DPR

PTA +2.16T +1.84UDC +1.55FLC 8/2015

CAN GPA +2222M +141F +100P +11C +11MS +10FL

• **The #1 Yoder Female in the World (9/15)**

• **The #3 GTPI Heifer on the September Run**

**Endeavor Holstein Genetics, LLC**

1216 Melbrook Dr.

Munster, IN 46321

815-697-2700

[declan.patten@butlerview.com](mailto:declan.patten@butlerview.com)

Terms: Cash unless prior arrangements are made specifically with seller and sale management is advised of these special terms in advance of the sale.

**WOODCREST MOGUL YODER-ET**

**72254526 TV TL TY TD**

77K GTPI +2653

PTA +1432M +99F +55P 78%R 8/2015

PTA +822NM +.17%F +.04%P 100%US

PTA +5.3PL 2.9SCS +.3DPR 4.9%DCE

PTA +2.37T +1.85UDC +1.77FLC 78%R 8/2015

**MOUNTFIELD SSI DCY MOGUL-ET**

**840 3006972816 TR TV TL TY TD**

GTPI +2570

PTA +2.58T +2.57UDC +2.65FLC 99%R 8/2015

**WOODCREST PLANET YAKARA-ET**

**840 3008363689**

VG-85 VV+++ 3-11

2-00 3 365 31050 3.6 1131 3.5 1100

**T-SPRUCE LGOLD 7933-ET 72737988**

9K GTPI +2452

PTA +1336M +72F +61P 73%R 8/2015

PTA +665NM +.08%F +.07%P

PTA +4.3PL 2.94SCS +.9DPR 6.7%DCE

PTA +1.36T +1.00UDC +.39FLC 72%R 8/2015

• **Super heifer from a great outcross sire stack!**

• **Sold for \$152,000 in the Day at the Derby Sale**

• **Brothers at Select & Semex**

**GENERATIONS LIQUID GOLD-ET**

**11397834C TV TL**

VG-87-1Y CAN GTPI +2277

**BOSSIDE EPIC YINGA 71356468**

VG-85 VV++V 2-09 GTPI +2350

PTA +1322M +41F +45P 79%R 8/2015

PTA +551NM -.03%F +.02%P

PTA +5.3PL 2.78SCS -.2DPR 6.8%DCE

PTA +1.85T +1.58UDC +1.18FLC 81%R 8/2015

2-01 3 305 31830 3.7 1163 3.4 1094

**3rd Dam: Bosside Boulder Baily-ET**

(GP-83 VG-MS)

2-03 2 365 28240 3.2 909 3.3 921

**4th Dam: Co-Op Bosside Yelonda-ET**

(VG-86 DOM)

2-00 2 365 28390 4.9 1386 3.6 1008

**5th Dam: Coyne-Farms Yelena CRI -ET**

(VG-85 GMD DOM)

1-11 3 365 36930 3.6 1336 3.2 1199

**6th Dam: Milkworth Manfred Yadda**

(VG-86 GMD DOM)

1-11 3 365 35730 4.0 1435 3.1 1092

**7th Dam: Milkworth Megabuck Yen**

(GP-83 VG-MS)

2-11 2 305 25380 3.8 1020 2.9 762

**8th Dam: Milkworth Blackstar Nach-ET**

(GP-81 VG-MS)

3-04 2 364 34690 3.3 1130 3.0 1050

**9th Dam: Foxworth Secret Naples-ET**

(VG-86 GMD DOM)

6-06 2 365 32830 3.6 1192 3.1 1010

**10th Dam: Foxworth Tradition Nicolena**

(VG-87 DOM)

9-01 2 365 33640 3.6 1197 3.0 1013

**11th Dam: Ransom-Rail Nicolette**

(VG-86 GMD DOM)

**12th Dam: Ransom-Rail Nicki Combination**

(2E-90 GMD DOM)

**13th Dam: Ransom-Rail Celeste Nicholas**

(VG-88 GMD)

**14th Dam: Ransom-Rail Pilot Ursula**

(VG-86 GMD)





*Snowbiz Sympatico Sofia-Red-ET*  
**Dam of Lot 3**



*Gen-I-Beq Snowman Summer-Tw-ET*  
**(VG-85-2Y CAN)**  
**2nd Dam of Lot 3**

*Patty Jones*

*Sofia Syndicate*  
*c/o Declan Patten*  
*1827 E 7750 S Rd*  
*Chebanse, IL 60922*  
*815/697-2700*

[declan.patten@butlerview.com](mailto:declan.patten@butlerview.com)

**3**

**Ms Sofias SS Serenity-ET \*RC**

*Born 6/7/2015 Reg. 840 3125945263 100%RHA*

13K GTPI +2645 / GLPI +3309 / DGV +3378

PTA +1405M +78F +57P 72%R 8/2015

PTA +791NM +.09%F +.05%P

PTA +6.0PL 2.78SCS +2.5DPR 5.1%DCE

PTA +1.71T +1.37UDC +1.64FLC 70%R 8/2015

CAN GPA +1517M +97F +71P +11C +12MS +11FL

• *Full sister to the #3 \*RC bull in the World!*

*Mr Sofias SS Senator \*RC GTPI+2684, headed to Jetstream*

Terms: Cash unless prior arrangements are made specifically with seller and sale management is advised of these special terms in advance of the sale.

**COGENT SUPERSHOT 755898903NLD**

**TL TD TV TY**

77K GTPI +2684

PTA +2147M +76F +70P 77%R 8/2015

PTA +870NM -.01%F +.02%P 100%US

PTA +7.7PL 2.80SCS +3.1DPR 5.0%DCE

PTA +1.13T +.70UDC +.88FLC 76%R 8/2015

**SNOWBIZ SYMPATICO SOFIA-RED-ET**

**108502624C TY**

77K GTPI +2457 / GLPI +3054 / DGV +3150

PTA +1591M +61F +51P 76%R 8/2015

PTA +613NM +.01%F +.01%P

PTA +3.7PL 2.83SCS -.4DPR 4.6%DCE

PTA +2.42T +1.75UDC +2.17FLC 73%R 8/2015

CAN GPA +1801M +82F +68P +12C +11MS +15FL

• # 6 Red Heifer in the World

• Due December 2015! Looks Incredible!

• Potential 13th Generation VG or EX!

**SEAGULL-BAY SUPERSIRE-ET 69981349**

**TV TL TY TD**

VG-87 VVVV 3-07 GM GTPI +2715

**ROSE SUPERCLASS 536745399DEU**

VG-88-2Y-NLD GTPI +2277

2-10 2 305 24215 4.0 968 3.6 871

**DYMENTHOLM S SYMPATICO-ET**

**11004723C RC TV TL TY**

GTPI +2291

PTA +1573M +63F +41P 87%R 8/2015

**GEN-I-BEQ SNOWMAN SUMMER-TW-ET**

**106807371C**

VG-85-2Y CAN GTPI +2255 / DGV +3004

PTA +1421M +45F +41P 82%R 8/2015

PTA +407NM +1.6PL 3.05SCS +.1DPR 5.9%DCE

PTA +1.90T +1.40UDC +2.34FLC 78%R 8/2015

2-01 3 358 30199 3.5 1052 3.1 935

**3rd Dam: Gen-I-Beq Bolton Secretly-ETS**

(VG-87-5Y CAN 3\*)

2-01 2 365 30474 4.4 1327 3.4 1042

**4th Dam: Gen-I-Beq Goldwyn Secret-ET**

(VG-87-2Y CAN 10\*)

5-05 2 365 30573 4.5 1389 3.4 1038

• Sold for \$160,000 to Rocky Mountain

Holsteins in 2007 Gen-I-Beq Sale

• Voted Red Impact Cow of the Year 2011 by Holstein International

**5th Dam: Gen-I-Beq Durham Sherry**

(VG-87-5Y CAN 8\*)

5-02 2 365 40036 3.9 1574 3.2 1268

**6th Dam: Glen Drummond Splendor**

(VG-86-2Y CAN 38\*)

4-10 2 314 26510 4.2 1124 3.2 840

• Dam of 7 EX & 22 VG Daughters

**7th Dam: Glen Drummond Aero Flower**

(VG-88-3Y CAN 18\*)

2-03 2 326 25622 4.0 1032 3.4 882

**8th Dam: Glen Drummond Shower-ET**

(EX CAN 14\*)

4-10 2 365 28583 4.8 1380 3.6 1016

**9th Dam: Glen Drummond SC Jo Beth**

(EX-2E CAN 7\*)

**10th Dam: Glen Drummond Matt Beth**

(VG-85-3Y CAN 4\*)

**11th Dam: Glen Drummond Marquis Beth**

(VG CAN)

**12th Dam: Ferglynn Rag Apple Berta**

(VG CAN 3\*)



*Larcrest Cardigan-ET (VG-86 VG-MS, 2y)  
Dam of Lot 4*

# 4 Ms Cardigan Silvercannon-ET

*Born 6/5/2015 Reg. 840 3125945253 99%RHA*

13K GTPI +2683 / GLPI +3367 / DGV +3446

PTA +1154M +87F +50P 74%R 8/2015

PTA +741NM +.16%F +.05%P

PTA +4.2PL 2.79SCS +1.3DPR 4.2%DCE

PTA +3.02T +2.39UDC +2.19FLC 72%R 8/2015

CAN GPA +1350M +105F +68P +17C +13MS +15FL +13DS +11R 8/15

*Cardigan Syndicate*

*c/o Declan Patten*

*1827 E 7750 S Rd*

*Chebanse, IL 60922*

*815/697-2700*

*declan.patten@butlerview.com*

Terms: Cash unless prior arrangements are made specifically with seller and sale management is advised of these special terms in advance of the sale.

## SEAGULL-BAY SILVER-ET 72156794 TY

GTPI +2677

PTA +1746M +105F +59P 78%R 8/2015

PTA +805NM +.15%F +.02%P 100%US

PTA +4.7PL 2.89SCS -.5DPR 4.8%DCE

PTA +2.66T +2.03UDC +2.40FLC 77%R 8/2015

## LARCREST CARDIGAN-ET 58591904

**99% RHA**

VG-86 VV++V 2-07 50K GTPI +2535

GLPI +3225 / DGV +3324

PTA -26M +53F +21P 80%R 8/2015

PTA +592NM +.20%F +.08%P

PTA +4.8PL 2.58SCS +3.5DPR 4.5%DCE

PTA +2.83T +2.66UDC +1.68FLC 78%R 8/2015

CAN GPA +17C +16MS +13FL +13R

2-02 2 156 12209 4.0 486 3.0 362 (Inc)

• Her Mardi Gras Female sold for \$300,000 in the 2015 Destination Naples Sale

• Dam of Mr Super Contender-ET, +2732 GTPI, the #4 Supershot bull in the World (8/15)

• JoSuper dtr., +2711 GTPI, +89F (9/15), the #7 JoSuper in the Breed on the September run.

## MOUNTFIELD SSI DCY MOGUL-ET

**840 3006972816 TR TV TL TY TD**

GM GTPI +2570

## SEAGULL-BAY SNOW DARLING-ET

**70640273**

VG-85 VE+V+ 3-02 GTPI +2293

2-06 2 365 35620 3.5 1257 3.2 1144

## AMIGHETI NUMERO UNO-ET

**17990915143ITA TV TL TY TD**

EX-90-HUN GM GTPI +2407

## LARCREST CALE-ET 56265400 99%RHA

VG-89 VEEVE DOM 3-01 GTPI +2316

PTA +53M +45F +34P 83%R 8/2015

PTA +519NM +.16%F +.12%P

PTA +4.2PL 2.76SCS +1.1DPR 6.4%DCE

PTA +1.96T +1.80UDC +.78FLC 83%R 8/2015

2-02 2 365 41710 5.3 2204 3.8 1566

1st MN Fat

## 3rd Dam: Larcrest Crimson-ET

(2E-92 EEEEE GMD DOM)

2-02 2 365 36060 4.7 1710 3.7 1351

## 4th Dam: Larcrest Cosmopolitan

(VG-87 E+VVV GMD DOM)

2-04 2 365 30930 4.1 1261 3.6 1119

• Bulls & Embryos sold Worldwide

## 5th Dam: Larcrest Oside Champagne-TW

(EX-90 EVVVV GMD DOM)

2-03 2 365 29110 4.5 1322 3.7 1077

## 6th Dam: Larcrest Juror Chanel

(3E-93 EEEEE GMD DOM)

9-00 2 365 48460 4.0 1943 3.4 1648

Over 250,000 Lifetime

## 7th Dam: Larcrest Lindy Chandra (VG-85)

2-05 2 365 20896 4.8 993 3.8 803

## 8th Dam: Larcrest Inspiration Carly

(VG-87 EEVVV)

3-05 2 305 21800 4.5 973 3.3 802



**Larcrest Cale-ET (VG-89 EX-MS DOM)**  
2nd Dam of Lots 4 & 5



**Larcrest Cale-ET**  
(VG-89 EX-MS DOM)  
2nd Dam of Lots 4 & 5



**Larcrest Crimson-ET**  
(2E-92 GMD DOM)  
3rd Dam of Lot s4 & 5

5

## Ms Cardigan SL Cadillac-ET

Born 6/13/2015 Reg. 840 3125945275 99%RHA  
13K GTPI +2617 / GLPI +3263 / DGV +3293  
PTA +806M +83F +35P 74%R 8/2015  
PTA +721NM +.19%F +.04%P  
PTA +5.0PL 2.68SCS +1.5DPR 3.8%DCE  
PTA +2.72T +2.25UDC +2.32FLC 72%R 8/2015  
CAN GPA +1037M +102F +52P +13C +13MS +14FL

*Cardigan Syndicate  
c/o Declan Patten  
1827 E 7750 S Rd  
Chebanse, IL 60922  
815/697-2700*

*declan.patten@butlerview.com*

Terms: Cash unless prior arrangements are made specifically with seller and sale management is advised of these special terms in advance of the sale.

### SEAGULL-BAY SILVER-ET 72156794 TY

GTPI +2677  
PTA +1746M +105F +59P 78%R 8/2015  
PTA +805NM +.15%F +.02%P 100%US  
PTA +4.7PL 2.89SCS -.5DPR 4.8%DCE  
PTA +2.66T +2.03UDC +2.40FLC 77%R 8/2015

### MOUNTFIELD SSI DCY MOGUL-ET

840 3006972816 TR TV TL TY TD

GM GTPI +2570

### SEAGULL-BAY SNOW DARLING-ET

70640273

VG-85 VE+V+ 3-02 GTPI +2293  
2-06 2 365 35620 3.5 1257 3.2 1144

### LARCREST CARDIGAN-ET 58591904

99%RHA

VG-86 VV+V 2-07 50K GTPI +2535  
GLPI +3225 / DGV +3324  
PTA -26M +53F +21P 80%R 8/2015  
PTA +592NM +.20%F +.08%P  
PTA +4.8PL 2.58SCS +3.5DPR 4.5%DCE  
PTA +2.83T +2.66UDC +1.68FLC 78%R 8/2015  
CAN GPA +17C +16MS +13FL +13R  
2-02 2 156 12209 4.0 486 3.0 362 (Inc)  
• Her Mardi Gras Female sold for \$300,000 in the 2015 Destination Naples Sale  
• Dam of Mr Super Contender-ET, +2732 GTPI, the #4 Supershot bull in the World (8/15)  
• JoSuper dtr., +2711 GTPI, +89F (9/15), the #7 JoSuper in the Breed on the September run.

### AMIGHETI NUMERO UNO-ET

17990915143ITA TV TL TY TD

EX-90-HUN GM GTPI +2407

### LARCREST CALE-ET 56265400 99%RHA

VG-89 VEEVE DOM 3-01 GTPI +2316  
PTA +53M +45F +34P 83%R 8/2015  
PTA +519NM +.16%F +.12%P  
PTA +4.2PL 2.76SCS +1.1DPR 6.4%DCE  
PTA +1.96T +1.80UDC +.78FLC 83%R 8/2015  
2-02 2 365 41710 5.3 2204 3.8 1566  
1st MN Fat

### 3rd Dam: Larcrest Crimson-ET

(2E-92 EEEEE GMD DOM)  
2-02 2 365 36060 4.7 1710 3.7 1351

### 4th Dam: Larcrest Cosmopolitan

(VG-87 E+VVV GMD DOM)  
2-04 2 365 30930 4.1 1261 3.6 1119

• Bulls & Embryos sold Worldwide

### 5th Dam: Larcrest Oside Champagne-TW

(EX-90 EVVVV GMD DOM)  
2-03 2 365 29110 4.5 1322 3.7 1077

### 6th Dam: Larcrest Juror Chanel

(3E-93 EEEEE GMD DOM)  
9-00 2 365 48460 4.0 1943 3.4 1648  
Over 250,000 Lifetime

### 7th Dam: Larcrest Lindy Chandra (VG-85)

2-05 2 365 20896 4.8 993 3.8 803

### 8th Dam: Larcrest Inspiration Carly

(VG-87 EEVVV)  
3-05 2 305 21800 4.5 973 3.3 802



**Ms Hue Tango 57644-ET**  
**Dam of Lot 6**



**Lookout Pesce Epic Hue**  
**(VG-86 VG-MS)**  
**2nd Dam of Lots 6 & 7**

**6**

**Progenesis Supershot Hope-ET**

**Born 5/15/2015 Reg. 12278133C 100%RHA**  
 GTPI +2682 / GLPI +3425 / DGV +3516  
 PTA +1642M +59F +57P +.03% 8/15  
 PTA +787NM +3.2DPR +7.3PL 2.75SCS  
 PTA +1.89T +1.88UDC +1.82FLC 8/15  
 CAN GPA +1838M +74F +77P +14C +14MS +13FL

Terms: Cash unless prior arrangements are made specifically with seller and sale management is advised of these special terms in advance of the sale.

**COGENT SUPERSHOT 755898903NLD**  
**TL TD TV TY**  
 77K GTPI +2684  
 PTA +2147M +76F +70P 77%R 8/2015  
 PTA +870NM -.01%F +.02%P 100%US  
 PTA +7.7PL 2.80SCS +3.1DPR 5.0%DCE  
 PTA +1.13T +.70UDC +.88FLC 76%R 8/2015

**MS HUE TANGO 57644-ET**  
**840 3010356391 TV TL TY TD**  
 77K GTPI +2567  
 PTA +1117M +63F +42P 75%R 8/2015  
 PTA +665NM +.08%F +.03%P  
 PTA +4.8PL 2.72SCS +2.4DPR 4.2%DCE  
 PTA +2.21T +1.92UDC +1.86FLC 74%R 8/2015

**SEAGULL-BAY SUPERSIRE-ET 69981349**  
**TV TL TY TD**  
 VG-87 VVVV 3-07 GM GTPI +2715  
**ROSE SUPERCLASS 536745399DEU**  
 VG-88-2Y-NLD GTPI +2277  
 2-10 2 305 24215 4.0 968 3.6 871

**MR WELCOME HILL TANGO-ET**  
**70750485 TV TL TY TD**  
 GTPI +2370  
**LOOKOUT PESCE EPIC HUE**  
**107766242C**  
 VG-86 VV+VV 3-00  
 GTPI +2352 / GLPI +2950 / DGV +2100  
 PTA +730M +54F +45P 79%R 8/2015  
 PTA +457NM +.10%F +.08%P  
 PTA +1.7PL 2.93SCS +1.0DPR 5.6%DCE  
 PTA +2.21T +1.27UDC +1.98FLC 80%R 8/2015  
 2-03 2 232 17921 4.3 766 3.6 650 (Inc)  
 • Great Brood Cow, Several high testing offspring on GTPI and RZG!  
 • Several sons in AI including, Mr Hue Heffner @ Jetstream

**Progenesis LP**  
**118 Side Rd 30**  
**Mildmay Ontario Canada**  
**NOG 2,J0**  
**519/270-3324**

**3rd Dam: Cookiecutter Mom Hue-ET**  
 (VG-88-2Y CAN)  
 2-04 2 365 28887 4.2 1210 3.7 1065  
**4th Dam: Cookiecutter Shthollerwood**  
 (EX-92 DOM)  
 2-04 3 365 30410 4.8 1462 3.6 1088  
**5th Dam: Cookiecutter Gld Holler-ET**  
 (VG-88 VVV+E DOM 2Y)  
 2-03 3 365 40730 3.5 1410 3.1 1249  
 • Her Bowser dtr sold for \$28,000 in the '10 Nat'l Sale  
**6th Dam: MS Knags-Rnsm Champ Haley-ET**  
 (EX-90 EX-MS GMD DOM)  
 3-11 3 365 43690 3.7 1625 3.1 1357  
**7th Dam: Regancrest-JDV Hanna-ET**  
 (EX-90 EEVVE)  
 4-07 3 365 45110 4.3 1922 3.2 1449  
**8th Dam: Long-Haven Rudolph Dee-ET**  
 (2E-90 EVVEE GMD DOM)  
 2-11 2 365 32720 4.8 1565 3.8 1252  
 LIFE 2306 166900 4.3 7099 3.5 5884  
**9th Dam: Regancrest Elton Disrael-ET**  
 (VG-88 EX-MS DOM)  
 2-04 2 365 33617 4.5 1499 3.5 1169  
**10th Dam: Snow-N Denises Dellia**  
 (2E-95 EX-MS GMD DOM 2\*)  
 7-06 2 365 35610 4.0 1431 2.9 1035  
 LIFE 2558 180240 3.9 7108 3.2 5723  
 32 EX & 49 VG offspring  
**11th Dam: Snow-N Dorys Denise**  
 (2E-90 EX-MS GMD DOM)  
 5-09 2 365 33350 3.8 1256 3.1 1038  
 LIFE 1604 114010 3.6 4153 3.2 3649



**Cookiecutter MOM Hue (VG-88-2Y CAN)**  
**3rd Dam of Lots 6 & 7**

**Progenesis LP**  
**118 Side Rd 30**  
**Mildmay Ontario Canada**  
**N0G 2J0**  
**519/270-3324**

**7 Progenesis Supershot Heavenly-ET**

**Born 6/29/2015 Reg. 12302894C 100%RHA**

GTPI +2621 / GLPI +3254 / DGV +3277  
 PTA +1202M +73F +50P +.05% 8/15  
 PTA +770NM +3.7DPR +6.0PL 2.78SCS  
 PTA +1.46T +1.24UDC +1.36FLC 8/15  
 CAN GPA +1438M +99F +71P +9C +10MS

Terms: Cash unless prior arrangements are made specifically with seller and sale management is advised of these special terms in advance of the sale.

**COGENT SUPERSHOT 755898903NLD**  
**TL TD TV TY**

77K GTPI +2684  
 PTA +2147M +76F +70P 77%R 8/2015  
 PTA +870NM -.01%F +.02%P 100%US  
 PTA +7.7PL 2.80SCS +3.1DPR 5.0%DCE  
 PTA +1.13T +.70UDC +.88FLC 76%R 8/2015

**MS HUE TANGO 57644-ET**  
**840 3010356391 TV TL TY TD**

77K GTPI +2567  
 PTA +1117M +63F +42P 75%R 8/2015  
 PTA +665NM +.08%F +.03%P  
 PTA +4.8PL 2.72SCS +2.4DPR 4.2%DCE  
 PTA +2.21T +1.92UDC +1.86FLC 74%R 8/2015

**SEAGULL-BAY SUPERSIRE-ET 69981349**  
**TV TL TY TD**

VG-87 VVVV 3-07 GM GTPI +2715  
**ROSE SUPERCLASS 536745399DEU**  
 VG-88-2Y-NLD GTPI +2277  
 2-10 2 305 24215 4.0 968 3.6 871

**MR WELCOME HILL TANGO-ET**  
**70750485 TV TL TY TD**

GTPI +2370  
**LOOKOUT PESCE EPIC HUE**  
**107766242C**  
 VG-86 VV+VV 3-00  
 GTPI +2352 / GLPI +2950 / DGV +2100  
 PTA +730M +54F +45P 79%R 8/2015  
 PTA +457NM +.10%F +.08%P  
 PTA +1.7PL 2.93SCS +1.0DPR 5.6%DCE  
 PTA +2.21T +1.27UDC +1.98FLC 80%R 8/2015  
 2-03 2 232 17921 4.3 766 3.6 650 (Inc)  
 • Great Brood Cow, Several high testing offspring on GTPI and RZG!  
 • Several sons in AI including, Mr Hue Heffner @ Jetstream

**3rd Dam: Cookiecutter Mom Hue-ET**  
 (VG-88-2Y CAN)

2-04 2 365 28887 4.2 1210 3.7 1065

**4th Dam: Cookiecutter Sthollerwood**  
 (EX-92 DOM)

2-04 3 365 30410 4.8 1462 3.6 1088

**5th Dam: Cookiecutter Gld Holler-ET**  
 (VG-88 VVV+E DOM 2Y)

2-03 3 365 40730 3.5 1410 3.1 1249

• Her Bowser dtr sold for \$28,000 in the '10 Nat'l Sale

**6th Dam: MS Knags-Rnsm Champ Haley-ET**  
 (EX-90 EX-MS GMD DOM)

3-11 3 365 43690 3.7 1625 3.1 1357

**7th Dam: Regancrest-JDV Hanna-ET**  
 (EX-90 EEVVE)

4-07 3 365 45110 4.3 1922 3.2 1449

**8th Dam: Long-Haven Rudolph Dee-ET**  
 (2E-90 EVVEE GMD DOM)

2-11 2 365 32720 4.8 1565 3.8 1252

LIFE 2306 166900 4.3 7099 3.5 5884

**9th Dam: Regancrest Elton Disrael-ET**  
 (VG-88 EX-MS DOM)

2-04 2 365 33617 4.5 1499 3.5 1169

**10th Dam: Snow-N Denises Dellia**  
 (2E-95 EX-MS GMD DOM 2\*)

7-06 2 365 35610 4.0 1431 2.9 1035

LIFE 2558 180240 3.9 7108 3.2 5723

32 EX & 49 VG offspring

**11th Dam: Snow-N Dorys Denise**  
 (2E-90 EX-MS GMD DOM)

5-09 2 365 33350 3.8 1256 3.1 1038

LIFE 1604 114010 3.6 4153 3.2 3649



**Roorda SS Merritt 15889-ET**  
**(VG-86 VG-MS, 2y)**  
**Dam of Lots 8 - 11**



**Roorda OB Mirella 15270-ET**  
**(EX-90 EX-MS)**  
**2nd Dam of Lots 8 - 11**

**8**

**IHG Silver Merrit 9778-ET**

**Born 6/22/2015 Reg. 840 3125945300 100%RHA**  
 13K GTPI +2675 / GLPI +3201 / DGV +3257  
 PTA +1388M +115F +54P 73%R 8/2015  
 PTA +822NM +.22%F +.04%P  
 PTA +5.0PL 2.96SCS +.4DPR 4.6%DCE  
 PTA +2.44T +1.85UDC +1.43FLC 72%R 8/2015  
 CAN GPA +1690M +135F +73P +11C +10MS

**Innovative Holstein Genetics, LLC**  
 c/o Declan Patten  
 1827 E 7750 S Rd  
 Chebanse, IL 60922  
 815/697-2700  
 declan.patten@butlerview.com

Terms: Cash unless prior arrangements are made specifically with seller and sale management is advised of these special terms in advance of the sale.

**SEAGULL-BAY SILVER-ET 72156794 TY**

GTPI +2677  
 PTA +1746M +105F +59P 78%R 8/2015  
 PTA +805NM +.15%F +.02%P 100%US  
 PTA +4.7PL 2.89SCS -.5DPR 4.8%DCE  
 PTA +2.66T +2.03UDC +2.40FLC 77%R 8/2015

**MOUNTFIELD SSI DCY MOGUL-ET**

**840 3006972816 TR TV TL TY TD**  
 GM GTPI +2570

**SEAGULL-BAY SNOW DARLING-ET**  
**70640273**

VG-85 VE+V+ 3-02 GTPI +2293  
 2-06 2 365 35620 3.5 1257 3.2 1144

**ROORDA SS MERRITT 15889-ET**  
**71013763 TL TD**

VG-86 VV+V 2-04 9K GTPI +2568  
 PTA +1147M +78F +44P 78%R 8/2015  
 PTA +756NM +.13%F +.03%P  
 PTA +7.0PL 2.90SCS +1.8DPR 5.1%DCE  
 PTA +2.06T +1.92UDC +.83FLC 76%R 8/2015  
 2-01 2 104 8230 6.1 498 3.1 253 (Inc)  
 • Her 1/15 AltaSpring dtr. sold for \$17,500 in the recent Day at the Derby Sale

**SEAGULL-BAY SUPERSIRE-ET 69981349**  
**TV TL TY TD**

VG-87 VVVV 3-07 GTPI +2715

**ROORDA OB MIRELLA 15270-ET 70338775**

EX-90 EEVVE 4-01 GTPI +2091  
 PTA +346M +19F +14P 84%R 8/2015  
 PTA +372NM +.02%F +.01%P  
 PTA +5.0PL 2.87SCS +.3DPR 5.8%DCE  
 PTA +1.55T +2.18UDC +41FLC 82%R 8/2015  
 3-01 3 285 32190 3.8 1217 3.3 1064  
 2-00 3 333 26520 4.1 1079 3.3 887

• Full Sister to Roorda Obsvr Majic 15272-ET (VG-85 VG-MS 2y), Sold for \$55,000 in the 2011 Destination Vegas Sale

**3rd Dam: Roorda Shottle 6802-ET**

(VG-88 EVV+E DOM)  
 4-01 3 347 34300 3.6 1235 3.1 1066

**4th Dam: Seagull-Bay Manat Mirage-ET**

(EX-90 VEVVE DOM)  
 3-06 3 365 35900 3.8 1364 3.4 1229

• Sold for \$20,000 in the Seagull Bay Dispersal  
 • 1 EX & 26 VG Daughters

**5th Dam: Lynmead Cleitus Minnow-ET**

(2E-91 EEEVV GMD DOM)  
 4-10 3 365 49550 3.7 1857 3.2 1592  
 7-00 3 365 47140 3.5 1637 3.1 1479  
 LIFE 2626 255910 3.7 9446 3.3 8481

**6th Dam: CMV Belwood Mindy-ET**

(VG-85 GMD DOM)  
 4-01 2 365 36341 3.6 1305 3.4 1239

**7th Dam: Briarpatch-R Misty-ET**

(VG-85 GMD DOM)

**8th Dam: Rilara Mars Las Ravena**

(EX-91 GMD DOM)  
 4-03 2 305 29030 4.6 1329

**9th Dam: Rag Apple Locust-Grove Charm**

(VG-86 GMD DOM)  
 5-02 2 26321 3.6 948



**Roorda SS Merritt 15889-ET (VG-86 VG-MS, 2y)**

**Dam of Lots 8 - 11**

# 9 **IHG Silver Merrit 9773-ET**

**Born 6/21/2015 Reg. 840 3125945295 100%RHA**

13K GTPI +2672 / GLPI +3257 / DGV +3301

PTA +1432M +78F +45P 73%R 8/2015

PTA +821NM +.09%F +.00%P

PTA +7.8PL 2.97SCS +2.2DPR 4.4%DCE

PTA +2.53T +2.57UDC +1.51FLC 72%R 8/2015

CAN GPA +1725M +88F +61P +14C +15MS +11FL

**Innovative Holstein Genetics, LLC**

*c/o Declan Patten*

**1827 E 7750 S Rd**

**Chebanse, IL 60922**

**815/697-2700**

**declan.patten@butlerview.com**

Terms: Cash unless prior arrangements are made specifically with seller and sale management is advised of these special terms in advance of the sale.

**SEAGULL-BAY SILVER-ET 72156794 TY**

GTPI +2677

PTA +1746M +105F +59P 78%R 8/2015

PTA +805NM +.15%F +.02%P 100%US

PTA +4.7PL 2.89SCS -.5DPR 4.8%DCE

PTA +2.66T +2.03UDC +2.40FLC 77%R 8/2015

**MOUNTFIELD SSI DCY MOGUL-ET**

**840 3006972816 TR TV TL TY TD**

GM GTPI +2570

**SEAGULL-BAY SNOW DARLING-ET**

**70640273**

VG-85 VE+V+ 3-02 GTPI +2293

2-06 2 365 35620 3.5 1257 3.2 1144

**ROORDA SS MERRITT 15889-ET  
71013763 TL TD**

VG-86 VV++V 2-04 9K GTPI +2568

PTA +1147M +78F +44P 78%R 8/2015

PTA +756NM +.13%F +.03%P

PTA +7.0PL 2.90SCS +1.8DPR 5.1%DCE

PTA +2.06T +1.92UDC +.83FLC 76%R 8/2015

2-01 2 104 8230 6.1 498 3.1 253 (Inc)

• Her 1/15 AltaSpring dr. sold for \$17,500 in the recent Day at the Derby Sale

**SEAGULL-BAY SUPERSIRE-ET 69981349  
TV TL TY TD**

VG-87 VVVV 3-07 GTPI +2715

**ROORDA OB MIRELLA 15270-ET**

**70338775**

EX-90 EEVVE 4-01 GTPI +2091

PTA +346M +19F +14P 84%R 8/2015

PTA +372NM +.02%F +.01%P

PTA +5.0PL 2.87SCS +.3DPR 5.8%DCE

PTA +1.55T +2.18UDC +.41FLC 82%R 8/2015

3-01 3 285 32190 3.8 1217 3.3 1064

2-00 3 333 26520 4.1 1079 3.3 887

• Full Sister to Roorda Obsvr Majic 15272-ET (VG-85 VG-MS 2y), Sold for \$55,000 in the 2011 Destination Vegas Sale **15**

**3rd Dam: Roorda Shottle 6802-ET**

(VG-88 EVV+E DOM)

4-01 3 347 34300 3.6 1235 3.1 1066

**4th Dam: Seagull-Bay Manat Mirage-ET**

(EX-90 VEVVE DOM)

3-06 3 365 35900 3.8 1364 3.4 1229

• Sold for \$20,000 in the Seagull Bay Dispersal

• 1 EX & 26 VG Daughters

**5th Dam: Lynmead Cleitus Minnow-ET**

(2E-91 EEEVV GMD DOM)

4-10 3 365 49550 3.7 1857 3.2 1592

7-00 3 365 47140 3.5 1637 3.1 1479

LIFE 2626 255910 3.7 9446 3.3 8481

**6th Dam: CMV Belwood Mindy-ET**

(VG-85 GMD DOM)

4-01 2 365 36341 3.6 1305 3.4 1239

**7th Dam: Briarpatch-R Misty-ET**

(VG-85 GMD DOM)

**8th Dam: Rilara Mars Las Ravena**

(EX-91 GMD DOM)

4-03 2 305 29030 4.6 1329

**9th Dam: Rag Apple Locust-Grove Charm**

(VG-86 GMD DOM)

5-02 2 26321 3.6 948



**Roorda OB Mirella 15270-ET (EX-90 EX-MS)**

2nd Dam of Lots 8 - 11

10

**IHG Octoberfest Mer 9828-ET**

Born 7/13/2015 Reg. 840 3125945350 99%RHA

13K GTPI +2639 / GLPI +3161 / DGV +3260

PTA +1165M +71F +45P 73%R 8/2015

PTA +760NM +.10%F +.03%P

PTA +7.1PL 2.69SCS +2.8DPR 5.8%DCE

PTA +2.25T +1.85UDC +1.15FLC 71%R 8/2015

CAN GPA +1527M +92F +64P +11C +10MS

• The #3 Octoberfest in the World (9/15)

Innovative Holstein Genetics, LLC

c/o Declan Patten

1827 E 7750 S Rd

Chebanse, IL 60922

815/697-2700

declan.patten@butlerview.com

Terms: Cash unless prior arrangements are made specifically with seller and sale management is advised of these special terms in advance of the sale.

**LADYS-MANOR OCTOBERFEST-ET**  
840 3013129308 99%RHA TR TV TL TY TD

GTPI +2555

PTA +1805M +67F +52P 76%R 8/2015

PTA +719NM +.00%F -.01%P 100%US

PTA +6.1PL 2.67SCS +2.1DPR 6.7%DCE

PTA +1.59T +1.31UDC +1.50FLC 74%R 8/2015

**ROORDA SS MERRITT 15889-ET**  
71013763 TL TD

VG-86 VV++V 2-04 9K GTPI +2568

PTA +1147M +78F +44P 78%R 8/2015

PTA +756NM +.13%F +.03%P

PTA +7.0PL 2.90SCS +1.8DPR 5.1%DCE

PTA +2.06T +1.92UDC +.83FLC 76%R 8/2015

2-01 2 104 8230 6.1 498 3.1 253 (Inc)

• Her 1/15 AltaSpring dr. sold for \$17,500 in the recent Day at the Derby Sale

**PINE-TREE ALTAOAK-ET 69169951**  
99%RHA TV TL TY TD

GTPI +2310

**LADYS-MANOR DORCY ODA**  
69547657 TY

VG-88 VEV+E DOM 2-11 GTPI +2468

2-00 2 365 31930 4.1 1319 3.3 1054

**SEAGULL-BAY SUPERSIRE-ET 69981349**  
TV TL TY TD

VG-87 VVVV 3-07 GTPI +2715

**ROORDA OB MIRELLA 15270-ET**  
70338775

EX-90 EEVVE 4-01 GTPI +2091

PTA +346M +19F +14P 84%R 8/2015

PTA +372NM +.02%F +.01%P

PTA +5.0PL 2.87SCS +.3DPR 5.8%DCE

PTA +1.55T +2.18UDC +.41FLC 82%R 8/2015

3-01 3 285 32190 3.8 1217 3.3 1064

2-00 3 333 26520 4.1 1079 3.3 887

• Full Sister to Roorda Obsvr Majic 15272-ET (VG-85 VG-MS 2y), Sold for \$55,000 in the 2011 Destination Vegas Sale 16

**3rd Dam: Roorda Shottle 6802-ET**

(VG-88 EVV+E DOM)

4-01 3 347 34300 3.6 1235 3.1 1066

**4th Dam: Seagull-Bay Manat Mirage-ET**

(EX-90 VEVVE DOM)

3-06 3 365 35900 3.8 1364 3.4 1229

• Sold for \$20,000 in the Seagull Bay Dispersal

• 1 EX & 26 VG Daughters

**5th Dam: Lynmead Cleitus Minnow-ET**

(2E-91 EEEVV GMD DOM)

4-10 3 365 49550 3.7 1857 3.2 1592

7-00 3 365 47140 3.5 1637 3.1 1479

LIFE 2626 255910 3.7 9446 3.3 8481

**6th Dam: CMV Belwood Mindy-ET**

(VG-85 GMD DOM)

4-01 2 365 36341 3.6 1305 3.4 1239

**7th Dam: Briarpatch-R Misty-ET**

(VG-85 GMD DOM)

**8th Dam: Rilara Mars Las Ravena**

(EX-91 GMD DOM)

4-03 2 305 29030 4.6 1329

**9th Dam: Rag Apple Locust-Grove Charm**

(VG-86 GMD DOM)

5-02 2 26321 3.6 948





**Roorda SS Merritt 15889-ET**  
**(VG-86 VG-MS, 2y)**  
**Dam of Lots 8 - 11**



**Roorda OB Mirella 15270-ET**  
**(EX-90 EX-MS)**  
**2nd Dam of Lots 8 - 11**

11

**IHG Rubicon Mer 9794-ET**

**Born 6/18/2015 Reg. 840 3125945287 99%RHA**  
 13K GTPI +2575 / GLPI +3018 / DGV +3058  
 PTA +1343M +71F +37P 73%R 8/2015  
 PTA +789NM +8.4PL 2.74SCS +2.8DPR 4.9%DCE  
 PTA +1.56T +1.62UDC +1.70FLC 73%R 8/2015  
 CAN GPA +1802M +92F +58P  
 • **The #4 Rubicon Female in the World (9/15)**

**Innovative Holstein Genetics, LLC**  
 c/o Declan Patten  
 1827 E 7750 S Rd  
 Chebanse, IL 60922  
 815/697-2700  
 declan.patten@butlerview.com

Terms: Cash unless prior arrangements are made specifically with seller and sale management is advised of these special terms in advance of the sale.

**EDG RUBICON-ET 72128125 TV TL TY**  
 GTPI +2681  
 PTA +1552M +102F +55P 78%R 8/2015  
 PTA +872NM +.16%F +.03%P100%US  
 PTA +7.1PL 2.99SCS +6DPR 5.1%DCE  
 PTA +2.00T +1.50UDC +1.98FLC 77%R 8/2015

**ROORDA SS MERRITT 15889-ET**  
**71013763 TL TD**  
 VG-86 VV++V 2-04 9K GTPI +2568  
 PTA +1147M +78F +44P 78%R 8/2015  
 PTA +756NM +.13%F +.03%P  
 PTA +7.0PL 2.90SCS +1.8DPR 5.1%DCE  
 PTA +2.06T +1.92UDC +.83FLC 76%R 8/2015  
 2-01 2 104 8230 6.1 498 3.1 253 (Inc)  
 • Her 1/15 AltaSpring dr. sold for \$17,500 in the recent Day at the Derby Sale

**MOUNTFIELD SSI DCY MOGUL-ET**  
**840 3006972816 TR TV TL TY TD**  
 GM GTPI +2532  
**SANDY-VALLEY ROBUST RUBY-ET**  
**69998487**  
 VG-86 +VVVV 2-09 GTPI +2505  
 2-04 2 305 29450 3.2 950 3.3 971

**SEAGULL-BAY SUPERSIRE-ET 69981349**  
**TV TL TY TD**  
 VG-87 VVVV 3-07 GM GTPI +2715  
**ROORDA OB MIRELLA 15270-ET 70338775**  
 EX-90 EEVVE 4-01 GTPI +2091  
 PTA +346M +19F +14P 84%R 8/2015  
 PTA +372NM +.02%F +.01%P  
 PTA +5.0PL 2.87SCS +3DPR 5.8%DCE  
 PTA +1.55T +2.18UDC +.41FLC 82%R 8/2015  
 3-01 3 285 32190 3.8 1217 3.3 1064  
 2-00 3 333 26520 4.1 1079 3.3 887  
 • Full Sister to Roorda Obsvr Majic 15272-ET (VG-85 VG-MS 2y), Sold for \$55,000 in the 2011 Destination Vegas Sale

**3rd Dam: Roorda Shottle 6802-ET**  
 (VG-88 EVV+E DOM)  
 4-01 3 347 34300 3.6 1235 3.1 1066  
**4th Dam: Seagull-Bay Manat Mirage-ET**  
 (EX-90 VEVVE DOM)  
 3-06 3 365 35900 3.8 1364 3.4 1229  
 • Sold for \$20,000 in the Seagull Bay Dispersal  
 • 1 EX & 26 VG Daughters  
**5th Dam: Lynmead Cleitus Minnow-ET**  
 (2E-91 EEEVV GMD DOM)  
 4-10 3 365 49550 3.7 1857 3.2 1592  
 7-00 3 365 47140 3.5 1637 3.1 1479  
 LIFE 2626 255910 3.7 9446 3.3 8481  
**6th Dam: CMV Belwood Mindy-ET**  
 (VG-85 GMD DOM)  
 4-01 2 365 36341 3.6 1305 3.4 1239  
**7th Dam: Briarpatch-R Misty-ET**  
 (VG-85 GMD DOM)  
**8th Dam: Rilara Mars Las Ravena**  
 (EX-91 GMD DOM)  
 4-03 2 305 29030 4.6 1329  
**9th Dam: Rag Apple Locust-Grove Charm**  
 (VG-86 GMD DOM)  
 5-02 2 26321 3.6 948



*Quiet-Brook-D Babylust-ET*  
(VG-89 EX-MS DOM)  
2nd Dam of Lot 12



*Quiet-Brook-D Sh Babylike*  
(EX-90 EX-MS)  
3rd Dam of Lot 12

# 12 Westcoast Mont Babydust 3052

Born 5/5/2015 Reg. 12229376C 100%RHA  
GTPI +2642

PTA +1189M +59F +.05% +55P +.07%  
PTA +738NM +6.4PL 2.76SCS +1.8DPR  
PTA +2.33T +2.21UDC +1.74FLC 9/2015

*Westcoast Holsteins*  
47749 Prairie Central  
Chilliwack, BC, V2P6H3  
604/792-1084

Terms: Cash unless prior arrangements are made  
specifically with seller and sale management is advised  
of these special terms in advance of the sale.

**VIEW-HOME MONTEREY-ET**  
69087180 99%RHA  
GTPI +2646

PTA +1095M +65F +49P 77%R 4/2015  
PTA +721NM +.09%F +.06%P 100%US  
PTA +5.7PL 2.95SCS +9DPR 3.8%DCE  
PTA +3.00T +3.03UDC +1.96FLC 76%R 4/2015

**BLUE-HORIZON JCKMN BABYDUST**  
840 3013232542 99%RHA TL TD  
9K GTPI +2541 / DGV +3144  
PTA +1204M +60F +58P 73%R 8/2015  
PTA +683NM +.05%F +.08%P  
PTA +5.1PL 2.69SCS +7DPR 7.0%DCE  
PTA +1.91T +1.75UDC +1.42FLC 73%R 8/2015

• Former #2 AltaJackman  
• Great heifer!!

**DE-SU BKM MCCUTCHEN 1174-ET**  
69990138 99%RHA TV TL TY TD  
EX-92 EEEE 3-08 GTPI +2379

**PINE-TREE 2149ROBST 4846-ET**  
69804610  
VG-86 VEV+V DOM 3-01 GTPI +2524

**DE-SU ALTAJACKMAN-ET 70625846**  
99%RHA TV TL TY TD  
GTPI +2382

**QUIET-BROOK-D BABYLUST-ET**  
840 3008307409 TV TL TD  
VG-89 VEVVE DOM 3-01 GTPI +2352  
PTA +1204M +41F +46P 80%R 8/2015  
PTA +540NM -.01%F +.03%P  
PTA +4.2PL 2.78SCS +.0DPR 5.9%DCE  
PTA +2.05T +1.05UDC +1.70FLC 81%R 8/2015  
2-07 2 365 31040 4.4 1377 3.7 1141

**3rd Dam: Quiet-Brook-D Sh Babylike**  
(EX-90 EEVVE)

3-00 3 365 43110 3.9 1675 3.3 1427

**4th Dam: Quiet-Brook-D Stry Babyamor**  
(2E-90 EEEVE)

4-01 365 40290 3.4 1386 3.2 1292

LIFE 132450 3.8 4978 3.2 4236

**5th Dam: Quiet-Brook-D Babylove-ET**  
(GP-80)

3-08 365 38840 3.7 1426 3.3 1297

LIFE 143300 4.1 5853 3.5 4989

**6th Dam: Quiet-Brook-D Babycakes-TW**  
(EX-93 EEEEE GMD-DOM)

3-02 365 39340 3.3 1288 3.1 1214

LIFE 144530 3.5 5062 3.1 4492

**7th Dam: Quiet-Brook-D Brandy**  
(EX-90 EVEVV)

4-05 279 28770 3.3 9393 3.0 857

LIFE 110430 3.0 3346 2.9 3246

**8th Dam: Quiet-Brook-D Bank Bourbon-TW**  
(VG-88 VVVE)

5-03 297 26640 3.4 917 3.0 811

LIFE 139740 3.6 5023 3.2 4419

**9th Dam: Ovaltop Glendell Bonnie**  
(VG-89 VEEV)

LIFE 143630 3.7 5314 3.2 4609



**Mormann Uno Garlic-ET**  
(VG-86 VG-MS, 2y)  
Dam of Lot 13

13

**IHG SS Garlic 9457-ET**

Born 2/26/2015 Reg. 840 3125944979 99%RHA  
13K GTPI +2637 / GLPI +3308 / DGV +3379  
PTA +1329M +60F +57P 73%R 8/2015  
PTA +750NM +.04%F +.06%P  
PTA +6.3PL 2.84SCS +4.8DPR 5.5%DCE  
PTA +1.56T +.79UDC +1.37FLC 71%R 8/2015  
CAN GPA +1529M +83F +78P

**Innovative Holstein Genetics, LLC**  
c/o Declan Patten  
1827 E 7750 S Rd  
Chebanse, IL 60922  
815/697-2700

[declan.patten@butlerview.com](mailto:declan.patten@butlerview.com)

Terms: Cash unless prior arrangements are made specifically with seller and sale management is advised of these special terms in advance of the sale.

**COGENT SUPERSHOT 755898903NLD**

**TL TD TV TY**  
77K GTPI +2684  
PTA +2147M +76F +70P 77%R 8/2015  
PTA +870NM -.01%F +.02%P 100%US  
PTA +7.7PL 2.80SCS +3.1DPR 5.0%DCE  
PTA +1.13T +.70UDC +.88FLC 76%R 8/2015

**MORMANN UNO GARLIC-ET**

**72127391 99%RHA TY**  
VG-86 VV++V 2-05 GTPI +2422  
PTA +411M +46F +24P 80%R 8/2015  
PTA +555NM +.11%F +.04%P  
PTA +5.3PL 2.87SCS +3.7DPR 5.7%DCE  
PTA +2.04T +1.56UDC +2.08FLC 78%R 8/2015  
• Her Main Event son IHG Jammin-ET is going to Jetstream Genetics, +2658 GTPI

**SEAGULL-BAY SUPERSIRE-ET 69981349**

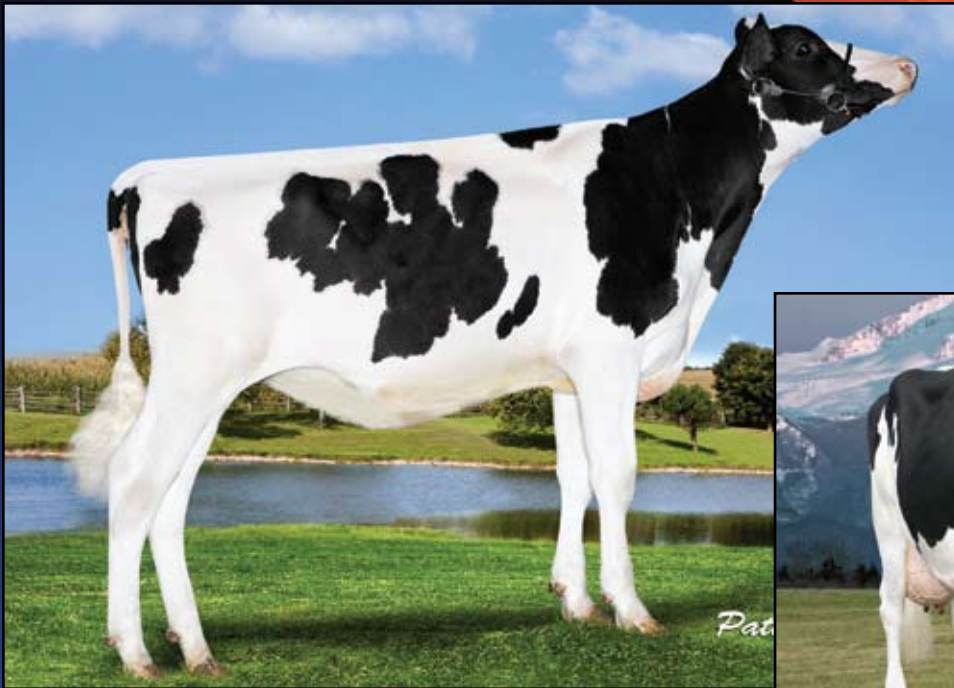
**TV TL TY TD**  
VG-87 VVVV 3-07 GM GTPI +2715  
**ROSE SUPERCLASS 536745399DEU**  
VG-88-2Y-NLD GTPI +2277  
2-10 2 305 24215 4.0 968 3.6 871

**AMIGHETI NUMERO UNO-ET**

**17990915143ITA TV TL TY TD**  
EX-90-HUN GM GTPI +2407  
**VISION-GEN SH FRD A12304-ET**  
**69517640 99%RHA**  
VG-86-2Y CAN (VG-88-MS) DOM  
GTPI +2290 / GLPI +2958 / DGV +3003  
PTA +1395M +43F +37P 84%R 8/2015  
PTA +465NM +3.5PL 3.12SCS +1.9DPR 6.7%DCE  
PTA +1.63T +1.10UDC +1.97FLC 85%R 8/2015  
2-00 2 365 30119 4.5 1369 3.1 939  
• Topped the Genomic Giant Sale at \$215,000!!  
• Outcross Pedigree!! No Shottle, No Goldwyn, No Bolton, No Planet & No BW Marshall

**3rd Dam: Applouis Jet Stream Alda-ET**

(VG-85 VG-MS DOM)  
5-05 2 305 24980 3.7 925 3.3 824  
• Numerous sons in A.I.  
**4th Dam: Morningview Otsd April-ET**  
(VG-87 VV+VE GMD DOM)  
2-03 3 365 36010 4.3 1560 3.6 1291  
**5th Dam: Morningview Gibbon Judy-ET**  
(VG-85 GMD DOM)  
2-04 2 305 25010 3.9 964 3.2 795  
**6th Dam: Morningview Converse Judy**  
(EX-93 GMD DOM)  
4-05 2 365 38100 4.1 1565 3.3 1269  
**7th Dam: Morningview Aerostar Jix-ET**  
(VG-87 EX-MS)  
5-06 2 340 32040 3.9 1249 3.4 1089  
**8th Dam: Walnutt-Knoll Judy-ET**  
(VG-87 VEVV GMD DOM)  
4-08 2 357 37210 4.0 1480 3.2 1187  
**9th Dam: Walnutt-Knoll RORAE Jenny**  
(2E-91 EEEV GMD DOM)  
7-04 2 365 29830 4.1 1210 3.0 885  
**10th Dam: Lynnberry Gem (VG-89 EEEV)**  
6-02 2 365 27770 4.1 1143



*Ronelee Balisto Daystar-ET*  
 Dam of Lot 14



*Ronelee Outside Dabble-ET*  
 (2E-91 GMD DOM)  
 3rd Dam of Lot 14

# 14 Progenesis Superman Daystar-ET

Born 8/14/2015 Reg. 12302939C 100%RHA

GTPI +2605

PTA +2259M +74F +67P +.00% 9/15  
 PTA +769NM +.3DPR +6.1PL 2.81SCS  
 PTA +1.87T +1.51UDC +1.02FLC 9/15

*Progenesis LP*  
 118 Side Rd 30  
 Mildmay Ontario Canada  
 NOG 2J0  
 519/270-3324

**RH SUPERMAN-ET 714061773NLD**  
 TV TL TY  
 77K GTPI +2629  
 PTA +2101M +98F +69P 77%R 8/2015  
 PTA +827NM +.07%F +.02%P100%US  
 PTA +5.6PL 2.97SCS +.6DPR 4.2%DCE  
 PTA +1.50T +.77UDC +.58FLC 75%R 8/2015

**RONELEE BALISTO DAYSTAR-ET**  
**142842223 99% RHA TL TD**  
 77K GTPI +2597 / GLPI +3244 / DGV +3434  
 PTA +2112M +72F +66P 75%R 8/2015  
 PTA +737NM -.02%F +.01%P  
 PTA +5.2PL 2.66SCS +.1DPR 4.6%DCE  
 PTA +2.10T +1.24UDC +1.24FLC 74%R 8/2015  
 CAN GPA +2795M +91F +97P +10C +11FL

**SEAGULL-BAY SUPERSIRE-ET 69981349**  
 TV TL TY TD  
 VG-87 VVVV 3-07 GM GTPI +2715  
**K&L MOM PAM 884122450NLD**  
 VG-85-NL 2Y GTPI +2135  
 2-02 2 305 18726 4.1 767 3.5 653

**DE-SU 11236 BALISTO-ET 70625988**  
**99%RHA TV TL TY TD**  
 50K GTPI +2429  
**RONELEE FACEBOOK DARCY-ET**  
**141826668**  
 VG-86 +VVVV 2-08 50K GTPI +2378  
 PTA +1460M +64F +42P 82%R 8/2015  
 PTA +547NM +.03%F -.01%P  
 PTA +3.9PL 2.83SCS +.16DPR 6.9%DCE  
 PTA +1.76T +1.30UDC +.44FLC 83%R 8/2015  
 2-01 3 365 29100 3.9 1126 3.3 947

Terms: Cash unless prior arrangements are made specifically with seller and sale management is advised of these special terms in advance of the sale.

**3rd Dam: Ronelee Outside Dabble-ET**  
 (2E-91 EEEEE GMD DOM)  
 5-03 3 365 44530 3.6 1612 3.1 1397  
 LIFE 2021 185730 3.6 6757 3.0 5614  
 • 4th Generation Excellent!  
**4th Dam: Ronelee Rudolph Dimple**  
 (2E-93 EEEEE DOM)  
 5-08 3 365 45920 3.7 1713 3.1 1428  
 LIFE 1582 164010 3.6 5900 3.2 5284  
**5th Dam: Select Mark Dolly**  
 (4E-95 EEEEE GMD DOM)  
 6-07 3 365 45870 4.0 1846 3.1 1431  
 LIFE 3295 276300 3.6 9992 3.2 8964  
**6th Dam: Select Southwind Dinah**  
 (2E-91 EEEEV)  
 5-11 3 365 30080 3.7 1124 3.3 981  
 LIFE 1505 103810 3.9 4010 3.3 3456  
**7th Dam: Select Mars Tony Diana**  
 (VG-86 VG-MS)  
 3-04 2 365 26200 4.2 1112 3.5 916  
**8th Dam: Dinah Select Wayne Dixie**  
 (VG-85)  
 3-07 2 305 23460 4.0 935 3.4 789  
**9th Dam: Dew-Vale Cavalier Dinah-OC**  
 (GP-83)  
**10th Dam: Dew-Vale Bootmaker Jolynn**  
 (VG-86)  
 5-06 2 305 17920 3.3 589  
**11th Dam: Dew-Vale Ideal Jolene (VG-85)**  
 2-01 2 305 19110 3.4 659



**Sully Hartford Snwmn 284-ET**  
2nd Dam of Lot 15



**Sully Planet Manitoba-ET**  
(VG-85-6 CAN DOM 5\*)  
3rd Dam of Lot 15



**Gil-Gar Predes Merlot-ET**  
Dam of Lot 15

*Progenesis LP*  
118 Side Rd 30  
Mildmay Ontario Canada  
NOG 2J0  
519/270-3324

# 15 Progenesis Silver Madeline-ET

Born 8/2/2015 Reg. 12302898C 100%RHA

GTPI +2590 / GLPI +3239 / DGV +3311  
PTA +1537M +93F +59P +.05% 8/15  
PTA +757NM -.2DPR +4.8PL 2.86SCS  
PTA +2.16T +1.50UDC +1.59FLC 8/15  
CAN GPA +2072M +120F +89P

Terms: Cash unless prior arrangements are made specifically with seller and sale management is advised of these special terms in advance of the sale.

**SEAGULL-BAY SILVER-ET 72156794 TY**  
GTPI +2677  
PTA +1746M +105F +59P 78%R 8/2015  
PTA +805NM +.15%F +.02%P 100%US  
PTA +4.7PL 2.89SCS -.5DPR 4.8%DCE  
PTA +2.66T +2.03UDC +2.40FLC 77%R 8/2015

**GIL-GAR PREDES MERLOT-ET 142418307**  
**TV TL TY TD**  
77K GTPI +2601  
PTA +1846M +61F +61P 76%R 8/2015  
PTA +766NM -.03%F +.02%P  
PTA +7.1PL 2.74SCS +1.8DPR 4.7%DCE  
PTA +1.69T +1.13UDC +1.01FLC 73%R 8/2015  
• Beautiful balanced heifer & an Exceptional transmitter!  
• Already has 6 sons going into A.I.!

**MOUNTFIELD SSI DCY MOGUL-ET**  
**840 3006972816 TR TV TL TY TD**  
GM GTPI +2570  
**SEAGULL-BAY SNOW DARLING-ET**  
**70640273**  
VG-85 VE+V+ 3-02 GTPI +2293  
2-06 2 365 35620 3.5 1257 3.2 1144

**RICKLAND PREDESTINE 669-ET**  
**69177592 TV TL TY TD**  
GTPI +2307  
**SULLY HARTFORD SNWMN 284-ET**  
**70372006**  
50K GTPI +2314  
PTA +2329M +44F +59P 81%R 8/2015  
PTA +484NM +2.6PL 2.76SCS -1.4DPR 5.7%DCE  
PTA +2.13T +1.25UDC +1.24FLC 79%R 8/2015

**3rd Dam: Sully Planet Manitoba-ET**  
(VG-85-6Y CAN DOM 5\*)  
2-03 2 365 33290 3.9 1306 3.3 1104  
**4th Dam: Sully Shottle May-TW**  
(EX-90 DOM 5\*)  
2-02 3 365 34110 3.2 1095 3.3 1130  
**5th Dam: MS Sully Oman Muetze-ET**  
(EX-90 EEVEV)  
4-08 2 365 33860 3.4 1164 3.4 1150  
**6th Dam: Johnan Marshall Mint**  
(VG-85 VG-MS 2Y)  
2-02 2 365 31030 3.1 961 3.0 941  
**7th Dam: Poly-Kow Durham Mincy-ET**  
(VG-88 VG-MS)  
5-08 2 365 40100 3.0 1222 3.1 1244  
LIFE 1541 124180 3.1 3880 3.3 4059  
**8th Dam: Poly-Pow Rudolph Mink-ET**  
(VG-86 VG-MS GMD DO1M)  
2-00 2 365 29290 3.6 1054 3.4 987  
**9th Dam: Poly-Kow Lindy Mindy-ET**  
(VG-88 VG-MS GMD DOM)  
3-08 2 365 39550 4.0 1589 3.0 1175  
LIFE 2057 150290 3.9 5820 3.0 4556  
**10th Dam: Footprint Nick Milan**  
(VG-89 EEV VV GMD DOM)  
5-10 2 365 34530 4.1 1430 3.3 1128  
**11th Dam: Footprint Mazda Command**  
(VG-85 GMD DOM)  
3-03 2 305 30280 4.2 1270 3.2 959  
**12th Dam: Footprint Ned Boy Mercedes**  
(VG-85)  
**13th Dam: Footprint Cor-Vel Madonna-TW**  
(VG-85)



**Bacon-Hill Mogul Paige-ET**  
(VG-87 EX-MS DOM, 2y)  
Dam of Lot 16



**Welcome Goldwyn Penya**  
(VG-89 EX-MS GMD DOM 2y)  
3rd Dam of Lot 16

16

**Midas-Touch Precious-ET**

**Born 6/1/2015 Reg. 840 3131083938 99%RHA**  
13K GTPI +2604 / GLPI +3075 / DGV +3077  
PTA +1225M +50F +46P 73%R 8/2015  
PTA +688NM +.02%F +.03%P  
PTA +5.6PL 2.90SCS +2.6DPR 5.2%DCE  
PTA +2.65T +2.90UDC +2.29FLC 73%R 8/2015  
CAN GPA +1706M +60F +64P +10C +13MS  
• **The #3 GTPI Crank It in the World (9/15)**

**Midas Touch Genetics**  
c/o David Dean King  
69 Halfway House Rd  
Waddington, NY 13694  
315/322-4162

Terms: Cash unless prior arrangements are made specifically with seller and sale management is advised of these special terms in advance of the sale.

**JENNY-LOU MCUTCHEN CRANK IT**  
**70412495 99%RHA TV TL TY TD**  
77K GTPI +2546  
PTA +1307M +62F +47P 77%R 8/2015  
PTA +635NM +.05%F +.03%P 100%US  
PTA +3.7PL 2.74SCS +1.1DPR 5.7%DCE  
PTA +2.62T +2.37UDC +2.23FLC 77%R 8/2015

**DE-SU BKM MCCUTCHEN 1174-ET**  
**69990138 99%RHA TV TL TY TD**  
EX-92 EEEE 3-08 GM GTPI +2468  
**JENNY-LOU IOTA 3157 840 3008967490**  
VG-87 VV+VV 3-07  
1-11 3 105 9540 4.0 379 3.4 326 (Inc)

**BACON-HILL MOGUL PAIGE-ET**  
**840 3009276251 99%RHA**  
VG-87 +V+VE DOM 2-11 GTPI +2491  
PTA +981M +45F +42P 80%R 8/2015  
PTA +659NM +.03%F +.04%P  
PTA +6.5PL 3.03SCS +2.0DPR 5.1%DCE  
PTA +2.03T +2.56UDC +1.96FLC 81%R 8/2015  
1-11 3 365 35690 4.0 1427 3.5 1234  
• 6th Generation VG or EX!  
• 3 Sons in A.I. including Pageone, a super sampler at Select sires, sired by Jacey!

**MOUNTFIELD SSI DCY MOGUL-ET**  
**840 3006972816 TR TV TL TY TD**  
GM GTPI +2570  
**WELCOME BOWSER PAMELA-ET**  
**840 3007076626 99%RHA TY**  
VG-87 VVGVV 3-04 GTPI +2156  
PTA +4.1PL 2.89SCS +3.0DPR 5.1%DCE  
PTA +1.25T +1.38UDC +1.48FLC 84%R 8/2015  
2-03 2 162 13734 3.3 448 3.1 427 (Inc)

**3rd Dam: Welcome Goldwyn Penya**  
(VG-89 VVVEE GMD DOM 2y)  
2-00 3 365 34780 3.5 1203 3.3 1159  
• Bowser dtr. sold for \$60,000  
**4th Dam: Welcome Ozzie Peya-ET**  
(EX-90 EX-MS DOM)  
1-11 3 365 31310 4.0 1260 3.4 1054  
5-02 3 365 32020 3.7 1192 3.4 1080  
**5th Dam: Welcome Aaron Penel**  
(VG-87 VVVVV DOM)  
4-08 3 365 35210 4.2 1480 3.5 1240  
Greater than 10 bulls in A.I.  
**6th Dam: Welcome Merrill Perky-ET**  
(VG-85 VG-MS)  
4-03 3 365 34690 3.6 1235 3.3 1139  
3-02 3 337 32350 3.6 1172 3.2 1045  
LIFE 1589 136330 3.5 4785 3.3 4453  
**7th Dam: Welcome Oscar Proxy**  
(G-78 DOM 2Y)  
4-08 3 365 35990 4.1 1487 3.3 1288  
LIFE 1370 113180 4.1 4621 3.6 4123  
**8th Dam: Willow-Marsh-Drw Prozac**  
(VG-85 VG-MS)  
4-00 3 365 30470 4.2 1279 3.3 1012  
LIFE 1353 103540 4.6 4434 3.4 3562  
**9th Dam: Dusty-Creek Rotate Ping-TW**  
(VG-86 VG-MS)  
3-06 2 365 33100 3.6 1192 3.3 1086  
2-02 2 365 24500 3.7 913 3.3 811  
**10th Dam: VG-87 VG-MS DOM**



*OConnors Snowman Lexi-ET*  
(VG-88-2Y CAN)  
2nd Dam of Lot 17



*OConnors Super Great Looks-ET*  
Dam of Lot 17

17

**Ms BVF Dr Delta 9787-ET**

Born 6/25/2015 Reg. 840 3125945309 100%RHA  
13K GTPI +2610 / GLPI +3031 / DGV +2966  
PTA +1614M +62F +48P 73%R 8/2015  
PTA +742NM +.01%F +.00%P  
PTA +6.8PL 2.94SCS +2.8DPR 4.5%DCE  
PTA +2.48T +1.96UDC +1.58FLC 72%R 8/2015

Jeff Butler & Dan Retzke  
1827 E 7750 S Rd  
Chebanse, IL 60922  
217/341-2437  
illinjett@aol.com

Terms: Cash unless prior arrangements are made specifically with seller and sale management is advised of these special terms in advance of the sale.

**MR MOGUL DELTA 1427-ET 72128216**  
TV TL TY TD  
77K GTPI +2718  
PTA +1586M +91F +53P 78%R 8/2015  
PTA +906NM +.11%F +.02%P 100%US  
PTA +8.2PL 2.83SCS +1.9DPR 5.6%DCE  
PTA +2.07T +1.81UDC +1.41FLC 78%R 8/2015

**MOUNTFIELD SSI DCY MOGUL-ET**  
840 3006972816 TR TV TL TY TD  
GM GTPI +2570  
**MISS OCD ROBST DELICIOUS-ET**  
840 3006989479  
VG-87 +EV+V DOM 3-05 GTPI +2688  
2-05 2 305 25780 3.5 908 3.3 841

**OCONNORS SUPER GREAT LOOKS-ET**  
108436070C  
GTPI +2541  
PTA +1815M +71F +62P 78%R 8/2015  
PTA +636NM +.01%F +.02%P  
PTA +3.7PL 2.96SCS +9DPR 5.2%DCE  
PTA +2.64T +1.23UDC +1.45FLC 76%R 8/2015  
• Fresh 8-25-15 and looks great!!  
• Her Main Event son going to Semex, +2629 GTPI

**SEAGULL-BAY SUPERSIRE-ET 69981349**  
TV TL TY TD  
VG-87 VVVV 3-07 GM GTPI +2715  
PTA +2386M +110F +72P 99%R 8/2015  
**OCONNORS SNOWMAN LEXI-ET**  
11347848C  
VG-88-2Y CAN GTPI +2078  
1-11 2 365 26093 3.9 1016 3.4 892  
• Two sisters sold for \$475,000 & \$365,000 in the Genetics by Design Sale

**3rd Dam: Oconnors Planet Lucia**  
(VG-86-2Y CAN)  
2-05 2 365 33702 4.5 1523 3.6 1202  
• Sold for \$410,000 in the Genetics by Design Sale  
**4th Dam: Comestar Goldwyn Lilac**  
(CAN VG-89-5Y 4\*)  
4-06 2 365 50607 4.6 2308 3.4 1739  
Nom. All-Canadian Sr. 2-Year-Old 2008  
All-ON Sr. 2-Year-Old 2008  
**5th Dam: Lylehaven Lila Z**  
(CAN EX-94 EX-96-MS 16\*)  
4-05 2 365 49101 4.0 1960 3.5 1695  
LIFE 1369 152512 3.9 5959 3.4 5207  
Nom. All-World 2011  
All-Canadian Jr. Yrlg. & Jr. 2-Yr-Old  
HM All-Canadian 4-Yr-Old & 5-Yr-Old  
**6th Dam: Lylehaven Form Laura-ET**  
(3E-94 EEEEE GMD DOM 6\*)  
8-08 2 365 39320 3.9 1529 3.1 1218  
LIFE 2267 195690 4.0 7731 3.1 6015  
Res. All-Canadian Jr. 3-Year-Old 2002  
HHM All-American 4-Year-Old 2003  
**7th Dam: Thiersant Lili Starbuck-ET**  
(5E-94 EEVVEE 2\*)  
8-00 2 365 29810 4.9 1453 3.4 1000  
LIFE 2925 207386 4.7 9747 3.4 7052  
Res. All-Canadian Jr. 3-Year-Old 2002  
HM All-American 4-Year-Old 2003



**Bryhill Suplex Marseille-ET**  
Dam of Lot 18



**Sully Robust 720-ET (GP-83, 2y)**  
2nd Dam of Lot 18

**Jeff Butler**  
1827 E 7750 S Rd  
Chebanse, IL 60922  
217/341-2437  
illinijett@aol.com

18

**Butlerview Silver Marcie**

**Born 7/29/2015 Reg. 840 3128968035 100%RHA**  
13K GTPI +2623 / GLPI +3181 / DGV +3241  
PTA +827M +92F +43P 73%R 8/2015  
PTA +786NM +.23%F +.06%P  
PTA +6.1PL 2.97SCS +2.1DPR 3.1%DCE  
PTA +2.40T +1.66UDC +1.79FLC 72%R 8/2015  
CAN GPA +1006M +120F +61P +10C +9MS +10FL

Terms: Cash unless prior arrangements are made specifically with seller and sale management is advised of these special terms in advance of the sale.

**SEAGULL-BAY SILVER-ET 72156794 TY**  
GTPI +2677  
PTA +1746M +105F +59P 78%R 8/2015  
PTA +805NM +.15%F +.02%P 100%US  
PTA +4.7PL 2.89SCS -.5DPR 4.8%DCE  
PTA +2.66T +2.03UDC +2.40FLC 77%R 8/2015

**BRYHILL SUPLEX MARSEILLE-ET**  
**840 3011619667 99%RHA TL TY TD**  
77K GTPI +2410  
PTA +501M +34F +31P 77%R 8/2015  
PTA +601NM +.06%F +.06%P  
PTA +7.5PL 2.83SCS +2.1DPR 5.5%DCE  
PTA +2.17T +2.05UDC +1.61FLC 74%R 8/2015  
2-02 2 30 1875 5.3 100 3.7 70 (Inc)

- Fresh 7-29-15
- The #1 GTPI Suplex in the WORLD!
- Tremendous Heifer from a Unique Pedigree!
- Going back to the great Sully Shottle May!

**MOUNTFIELD SSI DCY MOGUL-ET**  
**840 3006972816 TR TV TL TY TD**  
GM GTPI +2570  
**SEAGULL-BAY SNOW DARLING-ET**  
**70640273**  
VG-85 VE+V+ 3-02 GTPI +2293  
2-06 2 365 35620 3.5 1257 3.2 1144

**BLUE-HORIZON ALTASUPLEX 68999396**  
**TV TL TY TD**  
GTPI +2021  
**SULLY ROBUST 720-ET 840 3008167779**  
GP-83-2Y CAN 50K GTPI +2503  
PTA +1471M +72F +50P 81%R 8/2015  
PTA +745NM +.06%F +.02%P  
PTA +7.6PL 3.04SCS +1.5DPR 5.6%DCE  
PTA +1.48T +1.03UDC +1.17FLC 76%R 8/2015  
2-01 3 365 33360 4.0 1325 3.4 1140  
• She is transmitting extreme genomics!  
• Fresh again. Phenominal genomic transmitting brood cow! Many #1 GTPI Offspring!

**3rd Dam: Sully Planet Manitoba-ET**  
(VG-85-6Y CAN DOM 5\*)  
2-03 2 365 33290 3.9 1306 3.3 1104  
**4th Dam: Sully Shottle May-TW**  
(EX-90 DOM 5\*)  
2-02 3 365 34110 3.2 1095 3.3 1130  
**5th Dam: MS Sully Oman Muetze-ET**  
(EX-90 EEVEV)  
4-08 2 365 33860 3.4 1164 3.4 1150  
**6th Dam: Johnan Marshall Mint**  
(VG-85 VG-MS 2Y)  
2-02 2 365 31030 3.1 961 3.0 941  
**7th Dam: Poly-Kow Durham Mincy-ET**  
(VG-88 VG-MS)  
5-08 2 365 40100 3.0 1222 3.1 1244  
LIFE 1541 124180 3.1 3880 3.3 4059  
**8th Dam: Poly-Pow Rudolph Mink-ET**  
(VG-86 VG-MS GMD DO1M)  
2-00 2 365 29290 3.6 1054 3.4 987  
**9th Dam: Poly-Kow Lindy Mindy-ET**  
(VG-88 VG-MS GMD DOM)  
3-08 2 365 39550 4.0 1589 3.0 1175  
LIFE 2057 150290 3.9 5820 3.0 4556  
**10th Dam: Footprint Nick Milan**  
(VG-89 EEEVV GMD DOM)  
5-10 2 365 34530 4.1 1430 3.3 1128  
**11th Dam: Footprint Mazda Command**  
(VG-85 GMD DOM)  
3-03 2 305 30280 4.2 1270 3.2 959  
**12th Dam: Footprint Ned Boy Mercedes**  
(VG-85)  
**13th Dam: Footprint Cor-Vel Madonna-TW**  
(VG-85)





*Coyne-Farms Pdestine May-ET*  
 Dam of Lot 19



*Foxberry Stream Myra 619-ET*  
 (VG-86 VG-MS DOM, 2y)  
 2nd Dam of Lot 19

19

## Progenesis Littleton Madison

*Born 7/4/2015 Reg. 12302900C 100%RHA*

GTPI +2621 / GLPI +3083 / DGV +3141

PTA +1202M +73F +50P +.05%P 8/15

PTA +770NM +3.7%DPR +6.0PL 2.78SCS

PTA +1.46T +1.24UDC +1.36FLC 8/15

CAN GPA +2322M +100F +71P

*Progenesis LP*

*118 Side Rd 30*

*Mildmay Ontario Canada*

*N0G 2J0*

*519/270-3324*

Terms: Cash unless prior arrangements are made specifically with seller and sale management is advised of these special terms in advance of the sale.

### SNOWBIZ LITTLETON-ETS

**108251028C TV TL TY TD**

77K GTPI +2574

PTA +2710M +83F +66P 78%R 8/2015

PTA +725NM -.07%F -.06%P 100%US

PTA +4.7PL 2.92SCS +4DPR 4.3%DCE

PTA +1.97T +1.12UDC +1.17FLC 76%R 8/2015

### SEAGULL-BAY SUPERSIRE-ET 69981349

**TV TL TY TD**

VG-87 VVVV 3-07 GM GTPI +2715

**FREUREHAVEN FGS LUCY-ET**

**11398471C**

VG-86-2Y CAN GTPI +2293

2-01 2 354 35919 4.2 1499 3.1 1106

### COYNE-FARMS PDESTINE MAY-ET

**71551546 99%RHA TL TD**

77K GTPI +2459 / GLPI +2858 / DGV +3069

PTA +578M +56F +28P 77%R 8/2015

PTA +625NM +.12%F +.04%P

PTA +6.4PL 2.86SCS +2.8DPR 5.6%DCE

PTA +1.89T +1.70UDC +2.09FLC 75%R 8/2015

• Maternal Sister to Coyne-Farms Srock Mack-ET at Select, +2327 GTPI

### RICKLAND PREDESTINE 669-ET

**69177592 TV TL TY TD**

GTPI +2307

**FOXBERY STREAM MYRA 619-ET**

**63203661 98%RHA**

VG-86 VV+V DOM 2-08 50K GTPI +2117

PTA +324NM +.13%F +.02%P

PTA +3.2PL 3.09SCS +2.9DPR 8.2%DCE

PTA +1.43T +1.60UDC +1.27FLC 86%R 8/2015

2-02 3 365 30750 3.9 1204 3.2 993

• Sold for \$65,000 in the 2010 Legends of the Fall Sale

• Sons in A.I.; including Srock Mack

**3rd Dam: Ms Heartbeat Jm Maggie Mae**

(2E-92 EEEEE GMD DOM)

2-11 2 365 37070 5.1 1887 3.3 1206

LIFE 1625 143570 4.6 6608 3.3 2243

**4th Dam: Heartbeat Rudolph Maggie**

(3E-94 EX-MS GMD DOM)

7-06 2 365 39250 4.0 1589 3.4 1332

LIFE 2036 188900 4.0 7489 3.4 6466



**Silvermaple Damion Camomile**  
**(EX-95 EEEEE)**  
 Dam of Lot 20

# 20 1st Choice Archrival Female

Jeff Butler  
 1827 E 7750 S Rd  
 Chebanse, IL 60922  
 217/341-2437  
 illinijett@aol.com

• From 4 Females Due December 1, 2015

**ECLIPSE ATWOODS ARCHRIVAL-ET**  
**1786521AUS**

77K GTPI +2009  
 PTA -13M +26F -1P 77%R 8/2015  
 PTA +157NM +.10%F +.00%P 100%US  
 PTA +1.0PL 2.86SCS -2.0DPR 8.4%DCE  
 PTA +3.80T +2.79UDC +2.82FLC 77%R 8/2015

**SILVERMAPLE DAMION CAMOMILE**  
**9732453C**

EX-95 EEEEE 5-07 GTPI +1747  
 5-02 2 356 34879 4.2 1461 3.1 1091  
 3-03 2 365 32268 4.1 1327 3.6 1159  
 2-03 2 313 20119 4.0 796 3.5 705  
 4-03 2 158 11350 4.7 538 4.0 451  
 LIFE 1362 113197 4.3 4820 3.5 4006  
*1st 4-Yr-Old & Grand Champion BC Spring Show 2012*  
*All-Canadian Jr. 3-Yr-Old '11 & Jr. 2-Yr-Old '10*  
*All-American Jr. 3-Yr-Old '11 & Jr. 2-Yr-Old '10*  
*Int. Champion Royal Winter Fair 2011*  
*Int.Champ World Dairy Expo 2011*  
*Res.Grand World Dairy Expo 2011*  
*1st Jr. 3-Yr-Old Royal Winter Fair 2011*  
 • Sold for \$290,000 in the 2012 International  
 Intrigue Sale

**MAPLE-DOWNS-I G W ATWOOD-ET**  
**8956379C TR TV TL TY TD**

EX-90 EE+V 4-06 GTPI +1972  
 PTA +3.78T +2.65UDC +3.00FLC 99%R 8/2015  
**ANYA-ET 1402793646DEU**  
 GTPI +1748  
 PTA +2.23T +1.61UDC +.95FLC 78%R 8/2015  
 Shottle X VG-89 EX-MS Champion

**ERBACRES DAMION 130263722**  
**TR TV TL TY TD**

EX-96 EEEE 11-01 GTPI +1476  
**STANHOPE CAMILA GOLDWYN 7807926C**  
 VG-85-4Y CAN GTPI +1760  
 4-01 2 365 30461 4.9 1486 3.3 1010  
 6-09 2 365 20564 5.0 1025 3.5 729  
 3-01 2 321 22399 4.5 1003 3.5 791  
 2-01 2 340 20697 4.4 913 3.4 697  
 LIFE 4 Lact. 100651 4.7 4771 3.5 3481

Terms: Standard ET Terms unless special ET  
 terms are approved by seller or sale management-  
 prior to the sale.  
 (35% Down/balance due 3-4 months of age)

**Maternal Sisters to Lot 20:**  
**Butlerview Doorman Class**  
 • 3rd Spring Calf WDE 2014  
 • HM All-American Spring Calf 2014  
 Sold for \$34,000 in the Crown Jewel Sale 2015

**Butlerview Door Camilla-ET**  
 • 1st Winter Yrlg & Jr. Champion Western  
 Spring National Show 2015  
 • Jr. All- American Winter Calf 2014  
 • Nom. All- American Winter Calf 2014  
 • 1st Winter Calf Jr. Holstein Show WDE 2014  
 • 5th Winter Calf Internat'l Holstein Show '14

**Wedgwood WH Camomile**  
 (VG-88-2y CAN)  
 • 1st Jr. Calf & Res. Jr. Champion Vancouver  
 Island 2013

**Wedgwood Alexander Camomile**  
 (VG-87-2y CAN)

**Silvermaple Atwood Cilantro**  
 (VG-85-2y CAN)

**3rd Dam: Kendu Triumphant Charity**  
 (EX-93 CAN 3\*)  
 3-04 2 365 28519 3.7 1065 3.1 888  
 HM Grand Champion Vancouver Island '06  
 2nd 5-Yr-Old Vancouver Island 2006

**4th Dam: Kendu Broker Cleopatra**  
 (GP-83-2Y CAN)  
 3-01 2 321 22000 4.0 886 3.5 763

**5th Dam: Elm Creft Tab Crystal**  
 (VG-88-8Y CAN)  
 6-11 2 365 27661 3.9 1069 3.2 888  
 LIFE 6 Lact. 142649 4.0 5681 3.3 4744



*Pierstein Goldwyn Frisou (2E-94 EEEEE)*  
 Dam of Lots 21 & 22

21

**1st Choice Beemer Female**

• From 3 Females Due December 1, 2015

*Jeff Butler*  
 1827 E 7750 S Rd  
 Chebanse, IL 60922  
 217/341-2437  
 illinjett@aol.com

22

**1st Choice Archrival Female**

• From 3 Females Due March 1, 2016

Terms: Standard ET Terms unless special ET terms are approved by seller or sale management prior to the sale.  
 (35% Down/balance due 3-4 months of age)

**POL BUTTE MC BEEMER-ET 7525863 TY**

GTPI +2225  
 PTA +952M +41F +26P 78%R 48/2015  
 PTA +488NM +.02%F -.01%P 100%US  
 PTA -.9PL 2.87SCS -1.6DPR 5.7%DCE  
 PTA +3.70T +3.00UDC +2.97FLC 77%R 8/2015  
 McCutchen X Gold Banner X Brasilia

**ECLIPSE ATWOODS ARCHRIVAL-ET**

**1786521AUS**  
 77K GTPI +2009  
 PTA -13M +26F -1P 77%R 8/2015  
 PTA +157NM +.10%F +.00%P 100%US  
 PTA +1.0PL 2.86SCS -2.0DPR 8.4%DCE  
 PTA +3.80T +2.79UDC +2.82FLC 77%R 8/2015  
 Atwood X Shottle X VG-89 EX-MS, 2y Champion

**PIERSTEIN GOLDWYN FRISOU**

**104673332C**  
 EX-94 EEEEE 2E 6-11  
 3-02 2 365 35893 3.8 1371 3.3 1173  
 4-07 2 305 34450 3.3 1136 2.9 991  
 6-03 2 305 27010 4.7 1281 3.0 812  
 2-01 2 291 20342 3.9 798 3.2 657  
 LIFE 1567 144614 3.9 5674 3.1 4509  
*1st Aged Cow Mid-West Spring 2013*  
*4th Aged Cow NY Spring Holstein Show 2013*  
*Res. Grand Champion Quebec Spring 2011*  
*2nd 4-Yr-Old Quebec Spring 2011*  
*3rd 4-Yr-Old Maxville Spring 2011*  
*Res. All-Quebec Jr. 3-Yr-Old 2010*  
*Nom. All-Canadian Jr. 3-Yr-Old 2010*  
*1st Jr.3-Yr-Old QC International 2010*  
 • Topped the 2012 CA Earthquake Sale at \$125,000

**BRAEDALE GOLDWYN 10705608C TL**

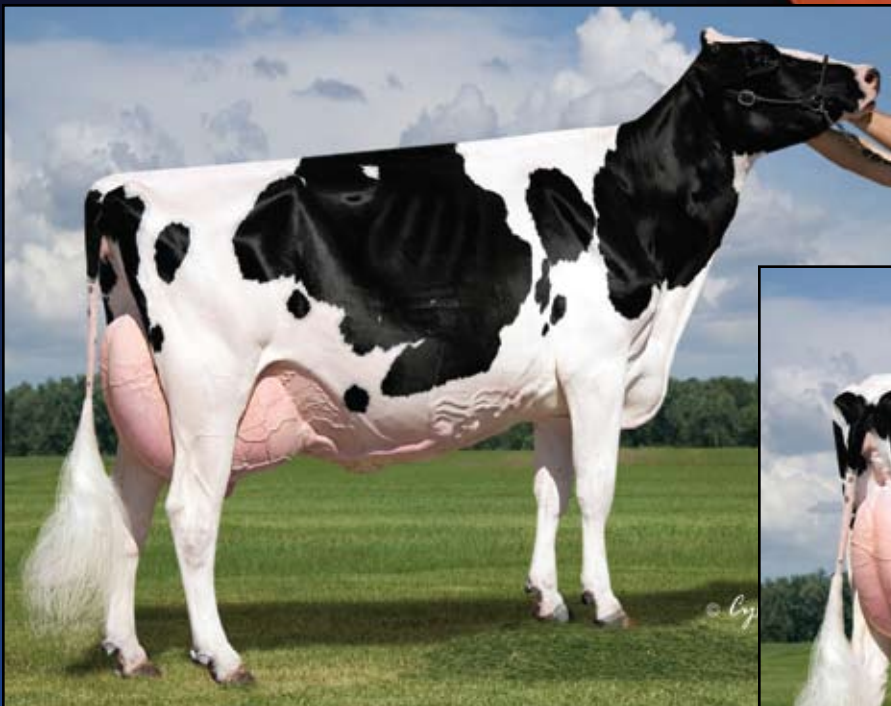
GP-84-8Y CAN Extra GM GTPI +1889  
 PTA +1.83T +1.51UDC +1.55FLC 99%R 8/2015

**DYKIE LHEROS FRITZ 8843423C**

EX-90-2E CAN  
 4-05 2 344 24747 3.4 853 3.3 817  
 3-05 2 318 24087 3.5 831 3.1 754  
 5-10 2 169 13267 3.3 441 3.1 410 (Inc)

**3rd Dam: Dykie Bonanza Hopper**

**4th Dam: Dykie Stacey 75%RHA**  
 (VG-89-9Y CAN)  
 2-03 2 314 19905 4.4 875 3.1 611



*Dubeau Dundee Hezbollah (EX-92 EEEEE)*  
 Dam of Lots 23 & 24

**23 Five (5) #2 Doorman Embryos**

**24 Five (5) #2 Archrival Embryos**

• *Potential 3rd Generation Excellent!*

*St. Jacobs ABC, Inc.*  
*c/o Tim Abbott*  
 2593 East Sheldon Road  
 Enosburg, VT 05450  
 802/527-9683

Terms: Cash unless prior arrangements are made specifically with seller and sale management is advised of these special terms in advance of the sale.

**ECLIPSE ATWOODS ARCHRIVAL-ET**  
**1786521AUS**

77K GTPI +2009  
 PTA -13M +26F -1P 77%R 8/2015  
 PTA +157NM +.10%F +.00%P 100%US  
 PTA +1.0PL 2.86SCS -2.0DPR 8.4%DCE  
 PTA +3.80T +2.79UDC +2.82FLC 77%R 8/2015

**DUBEAU DUNDEE HEZBOLLAH**  
**104117050C**

EX-92 EEEEE 4-05  
 4-03 2 365 42046 4.4 1859 3.3 1379  
 2-03 2 365 27189 3.4 933 3.4 928  
*Res. All-American 4-Year-Old 2011*  
*2nd 4-Year-Old World Dairy Expo 2011*  
*1st Sr. 2-Year-Old & Intermediate Champion WDE '09*  
*All-Canadian Sr. 2-Year-Old 2009*  
*All-American Sr. 2-Year-Old 2009*  
 • Sold for \$130,000 in the 2009 International Intrigue Sale  
 • Dam of 7 EX & 22 VG daughters  
 • Sons in A.I., including Heztry \*RC (EX-91), Heath & Hezton (EX-93)

**VAL-BISSON DOORMAN 107281711C**  
**TV TL TY TD 99%RHA**

VG-87-CAN 50K GTPI +2380  
 PTA +593M +45F +36P 78%R 8/2015  
 PTA +488NM +.09%F +.06%P 100%US  
 PTA +2.7PL 2.56SCS -.6DPR 5.2%DCE  
 PTA +2.79T +2.17UDC +1.53FLC 77%R 8/2015

**REGANCREST DUNDEE-ET 127640114**

**TV TL TY**  
 EX-95 EEEV 6-08 GTPI +1365  
**DUBEAU LYNE LA TRENT HUIT B**  
**100486776C**  
 EX-90 EVEC CAN 3\*  
 5-05 2 365 28583 4.3 1230 3.4 983  
 4-02 2 365 24980 4.4 1096 3.4 853  
 2-11 2 365 22194 4.6 1016 3.7 818  
 6-10 2 365 27773 4.3 1205 3.5 972  
 LIFE 124262 4.5 5551 3.5 4405

**Hezbollah!**

1st 4-Yr-Old, Sr. & Grand Champion Midwest Spring Nat'l 2011  
 All-American Sr. 2-Year Old 2009  
 All-America Sr. 2-Year Old 2009  
 1st Sr. 2-Year Old & Int Champion WDE 2009  
 2nd Sr. 2-Year-Old Royal Winter Fair 2009  
 HM All-Quebec Int. Yrlg. 2008  
 1st Int. Yrlg. & Res. Jr. Champ Rive-Nord Exposition 2008  
 1st Int. Yrlg. & Jr. Champ Huntingdon 2008  
 1st Int. Yrlg. & Res. Jr. Champ Ormstown '08  
 2nd Int. Yearling Royal Winter Fair 2008  
 2nd Int. Yearling Three Rivers 2008  
 3rd Int. Yrlg. Quebec Spring Show 2008  
 Nom. All-Quebec Int. Calf 2007  
 1st Int. Calf Three Rivers 2007  
 2nd Int. Calf Ormstown 2007

**3rd Dam: Dubeau Jy Antoinette**  
 (VG-87-4Y CAN 1\*)

4-03 2 321 29112 3.9 1149 3.3 957  
 7-05 2 358 27044 4.2 1149 3.4 906  
 LIFE 9 Lact. 233712 4.1 9579 3.5 8157



*Kingsway Goldwyn Artichoke-ET (EX-92 EX-MS)  
Dam of Lot 25*

25

**1st Choice Doorman Female**

- From 4 Females Due December 2, 2015
- Backed by the Incredible Kingsway Terrason Allie Family
- Big time Showtype Family that has proven to transmit!

**Jeff Butler**  
1827 E 7750 S Rd  
Chebanse, IL 60922  
217/341-2437  
illinjett@aol.com

Terms: Standard ET Terms unless special ET terms are approved by seller or sale management prior to the sale. (35% Down/balance due 3-4 months of age)

**VAL-BISSON DOORMAN 107281711C**  
TV TL TY TD 99% RHA  
VG-87-CAN 50K GTPI +2380  
PTA +593M +45F +36P 78%R 8/2015  
PTA +488NM +.09%F +.06%P 100%US  
PTA +2.7PL 2.56SCS -.6DPR 5.2%DCE  
PTA +2.79T +2.17UDC +1.53FLC 77%R 8/2015

**DE-SU BOOKEM-ET 66636657 99%RHA**  
TR TV TL TY TD  
VG-86 VV+V 3-08 GM GTPI +2405  
**VAL-BISSON SHOTTLE IMELDA-ET**  
**106173432C**  
VG-89-2Y CAN  
1-11 2 365 25531 4.2 1076 3.7 957

**3rd Dam: Kingsway Terrason Allie**  
(EX-95-2E CAN 2\*)  
6-02 2 365 37291 4.6 1731 3.4 1265  
LIFE 4 Lact. 138901 4.4 6089 3.5 4797  
All-Ontario 4-Yr-Old 2007 & Sr. 3-Yr-Old '06  
Res. All-Canadian Sr. 3-Yr-Old 2006  
HM Int. Champion Royal 2006  
Res. Grand Champ ON Spring Discovery 2009  
Res. Grand Champion ON Discovery 2007  
HM Grand Champion ON Summer 2007  
**4th Dam: Kingsway Progress Ashley**  
(EX-CAN 5\*)  
7-02 2 365 34881 3.3 1160 3.0 1052  
**5th Dam: Nelcam Tab Astra**  
(EX-3E-CAN 6\*)  
7-08 2 365 29592 3.7 1105 3.2 946  
LIFE 7 Lact. 173160 3.5 6146 3.2 5606  
Res. Grand Champion Northumberland '96  
**6th Dam: Nelcam Prestar Astra**  
(VG-88-CAN 3\*)  
4-00 2 365 21554 3.4 734 3.3 710  
**7th Dam: Nelcam Count Alice (EX-CAN)**  
6-07 2 365 25695 3.4 875  
**8th Dam: Nelcam Leader Astra**  
(EX-CAN 2\*)

**KINGSWAY GOLDWYN ARTICHOKE-ET**  
**11087154C**  
EX-92 EEEVE 4-01  
3-08 2 308 31567 4.1 1288 3.2 1023  
All-American Fall Yearling Heifer 2012  
1st Fall Yearling World Dairy Expo 2012  
Full Sister to Artichoke:  
Kingsway Goldwyn Abba Dabba  
(VG-89 Maximum Score)  
1st Sr. 3-Year-Old, Inter. & Grand  
Ontario Autumn Opportunity Show '13  
6th Sr. 3-Year-Old Royal Winter Fair '13

**BRAEDALE GOLDWYN 10705608C TL**  
GP-84-8Y CAN Extra GM GTPI +1889  
PTA +1.83T +1.51UDC +1.55FLC 99%R 8/2015  
**KINGSWAY DUNDEE ABRA**  
**CODABRA 7645875C**  
EX-90 EEEEEV 7-01  
2-02 2 365 22306 3.9 875 3.4 753  
All-Canadian Summer Yearling 2007  
All-Canadian 4-H Summer Yearling 2007  
1st Summer Yearling Royal Winter Fair 2007



**Kingemerling Halgn Flame-ET**  
 Dam of Lot 26



**Kingemerling O-Sty Favor-ET**  
 (VG-86 VG-MS, 2y)  
 2nd Dam of Lot 26

**26**

**Progenesis Silver Florence-ET**

*Born 8/1/2015 Reg. 12302920C 100%RHA*  
 GTPI +2587 / GLPI +3308 / DGV +3351  
 PTA +1320M +61F +50P +.04% 8/15  
 PTA +707NM +1.7DPR +5.6PL 2.73SCS  
 PTA +2.16T +1.50UDC +1.59FLC 8/15  
 CAN GPA +1636M +74F +72P +13C +13MS +12FL

*Progenesis LP*  
 118 Side Rd 30  
 Mildmay Ontario Canada  
 NOG 2J0  
 519/270-3324

Terms: Cash unless prior arrangements are made specifically with seller and sale management is advised of these special terms in advance of the sale.

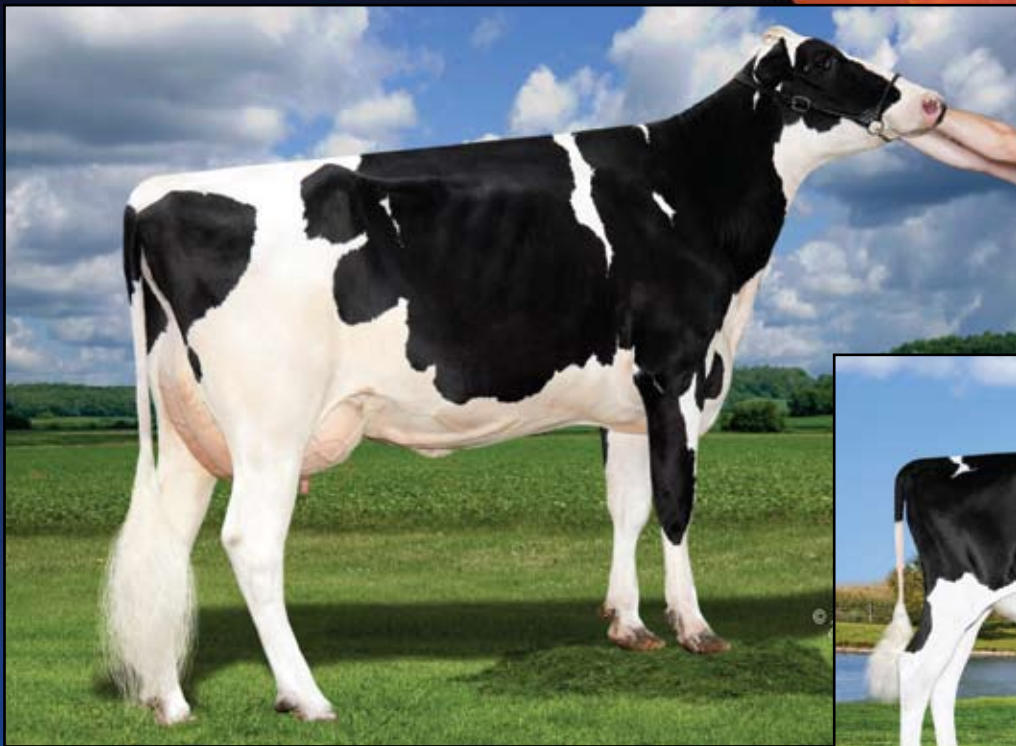
**SEAGULL-BAY SILVER-ET 72156794 TY**  
 GTPI +2677  
 PTA +1746M +105F +59P 78%R 8/2015  
 PTA +805NM +.15%F +.02%P 100%US  
 PTA +4.7PL 2.89SCS -.5DPR 4.8%DCE  
 PTA +2.66T +2.03UDC +2.40FLC 77%R 8/2015

**MOUNTFIELD SSI DCY MOGUL-ET**  
**840 3006972816 TR TV TL TY TD**  
 GM GTPI +2570  
**SEAGULL-BAY SNOW DARLING-ET**  
**70640273**  
 VG-85 VE+V+ 3-02 GTPI +2293  
 2-06 2 365 35620 3.5 1257 3.2 1144

**KINGEMERLING HALGN FLAME-ET**  
**71875836 TV TL TY TD**  
 77K GTPI +2588  
 PTA +1278M +50F +48P 75%R 8/2015  
 PTA +724NM +.01%F +.03%P  
 PTA +6.7PL 2.64SCS +2.9DPR 6.6%DCE  
 PTA +1.80T +1.89UDC +1.31FLC 73%R 8/2015  
 • An Exceptional donor dam with high embryo production, the health traits of Halogen & production of the maternal line!  
 • No Mogul or Supersire blood, great donor for today's top bulls!!

**COOKIECUTTER PETRON HALOGEN**  
**840 3008710387 TV TL TY TD**  
 GTPI +2516  
**KINGEMERLING O-STY FAVOR-ET**  
**70041158**  
 VG-86 VVV+V 2-08 9K GTPI +2267  
 PTA +2027M +48F +47P 80%R 8/2015  
 PTA +536NM +4.3PL 2.92SCS +.2DPR 6.4%DCE  
 PTA +1.13T +.66UDC +1.06FLC 76%R 8/2015  
 2-01 3 271 26320 3.7 970 3.0 792

**3rd Dam: King-Emer Planet Faithy-ET**  
 (VG-85)  
 4-04 3 365 32530 4.4 1420 3.6 1163  
**4th Dam: Honeycrest Shottle Faith-ET**  
 (EX-91 EEVVE DOM)  
 2-06 365 38220 4.4 1680 3.1 1179  
 • Multiple AI sons  
**5th Dam: Honeycrest Flower Girl-ET**  
 (VG-85 +V+V+ GMD)  
 2-01 365 39910 3.7 1483 2.7 1067  
**6th Dam: Honeycrest Maryj Twilite-ET**  
 (VG-86 GMD)  
 1-11 365 32200 4.0 1287 3.3 1069  
**7th Dam: Honeycrest Aerostar Mary-ET**  
 (2E-90 GMD-DOM)  
 5-05 365 47470 3.7 1766 2.9 1396  
 LIFE 150600 3.7 5626 3.2 4819  
 • 16 sons in AI \*Embryos exported  
 • 3 full sisters all VG or EX & over 40000M  
**8th Dam: Honeycrest Blkstar Kathryn**  
 (EX-90 GMD-DOM)  
 3-06 365 28740 3.7 1074 3.4 976  
**9th Dam: Honeycrest Mars Kathleen**  
 (VG-88 DOM)  
 4-06 365 27460 3.7 1004 3.4 925  
**10th Dam: Honeycrest Bell Kathleen (EX-90)**  
 8-02 364 30070 3.7 1119 3.2 953



**Kingemerling O-Sty Favor-ET**  
(VG-86 VG-MS, 2y)  
2nd Dam of Lot 27



**Kingemerling Halgn Flame-ET**  
Dam of Lot 27

27

**Progenesis Octoberfest-Flame-ET**

Born 8/13/2015 Reg. 12302936C 100%RHA  
GTPI +2589

PTA +1319M +69F +.04% +42P +.01% 9/15  
PTA +731NM +3.0DPR +6.1PL 2.43SCS  
PTA +1.57T +1.65UDC +1.45FLC 9/15

Terms: Cash unless prior arrangements are made specifically with seller and sale management is advised of these special terms in advance of the sale.

*Progenesis LP*  
118 Side Rd 30  
Mildmay Ontario Canada  
N0G 2J0  
519/270-3324

**LADYS-MANOR OCTOBERFEST-ET**  
840 3013129308 99%RHA TR TV TL TY TD  
GTPI +2555  
PTA +1805M +67F +52P 76%R 8/2015  
PTA +719NM +.00%F -.01%P 100%US  
PTA +6.1PL 2.67SCS +2.1DPR 6.7%DCE  
PTA +1.59T +1.31UDC +1.50FLC 74%R 8/2015

**KINGEMERLING HALGN FLAME-ET**  
71875836 TV TL TY TD  
77K GTPI +2588  
PTA +1278M +50F +48P 75%R 8/2015  
PTA +724NM +.01%F +.03%P  
PTA +6.7PL 2.64SCS +2.9DPR 6.6%DCE  
PTA +1.80T +1.89UDC +1.31FLC 73%R 8/2015  
• An Exceptional donor dam with high embryo production, the health traits of Halogen & production of the maternal line!  
• No Mogul or Supersire blood, great donor for today's top bulls!!

**PINE-TREE ALTAOAK-ET 69169951**  
99%RHA TV TL TY TD  
GTPI +2310  
**LADYS-MANOR DORCY ODA**  
69547657 TY  
VG-88 VEV+E DOM 2-11 GTPI +2468  
2-00 2 365 31930 4.1 1319 3.3 1054

**COOKIECUTTER PETRON HALOGEN**  
840 3008710387 TV TL TY TD  
GTPI +2516  
**KINGEMERLING O-STY FAVOR-ET**  
70041158  
VG-86 VVV+V 2-08 9K GTPI +2267  
PTA +2027M +48F +47P 80%R 8/2015  
PTA +536NM +4.3PL 2.92SCS +2.2DPR 6.4%DCE  
PTA +1.13T +.66UDC +1.06FLC 76%R 8/2015  
2-01 3 271 26320 3.7 970 3.0 792

**3rd Dam: King-Emer Planet Faithy-ET**  
(VG-85)  
4-04 3 365 32530 4.4 1420 3.6 1163  
**4th Dam: Honeycrest Shottle Faith-ET**  
(EX-91 EEVVE DOM)  
2-06 365 38220 4.4 1680 3.1 1179  
• Multiple AI sons  
**5th Dam: Honeycrest Flower Girl-ET**  
(VG-85 +V+V+ GMD)  
2-01 365 39910 3.7 1483 2.7 1067  
**6th Dam: Honeycrest Maryj Twilite-ET**  
(VG-86 GMD)  
1-11 365 32200 4.0 1287 3.3 1069  
**7th Dam: Honeycrest Aerostar Mary-ET**  
(2E-90 GMD-DOM)  
5-05 365 47470 3.7 1766 2.9 1396  
LIFE 150600 3.7 5626 3.2 4819  
• 16 sons in AI \*Embryos exported  
• 3 full sisters all VG or EX & over 40000M  
**8th Dam: Honeycrest Blkstar Kathryn**  
(EX-90 GMD-DOM)  
3-06 365 28740 3.7 1074 3.4 976  
**9th Dam: Honeycrest Mars Kathleen**  
(VG-88 DOM)  
4-06 365 27460 3.7 1004 3.4 925  
**10th Dam: Honeycrest Bell Kathleen (EX-90)**  
8-02 364 30070 3.7 1119 3.2 953



**B-Enterprise Super Gigi-ET**  
(VG-88 DOM)  
2nd Dam of Lot 28

**Farnear-TBR-BH Gorgeous-ET**  
(VG-85 VG-MS, 2y)  
Dam of Lot 28

**28**

**IHG Powerball Gor 9596-ET**

Born 4/13/2015 Reg. 840 3125945118 100%RHA  
13K GTPI +2552

PTA +1619M +76F +57P 73%R 8/2015  
PTA +761NM +.05%F +.03%P  
PTA +6.1PL 2.81SCS +3.4DPR 5.2%DCE  
PTA +1.08T +.11UDC +.28FLC 72%R 8/2015

**Innovative Holstein Genetics, LLC**  
c/o Declan Patten  
1827 E 7750 S Rd  
Chebanse, IL 60922  
815/697-2700  
declan.patten@butlerview.com

**VIEW-HOME POWERBALL P-ET**  
840 3011789392 PC TV TL TY TD  
50K GTPI +2497  
PTA +1208M +50F +57P 77%R 8/2015  
PTA +639NM +.01%F +.08%P 100%US  
PTA +4.4PL 2.97SCS +3.0DPR 4.8%DCE  
PTA +1.64T +1.20UDC +.74FLC 77%R 8/2015

**FARNEAR-TBR-BH GORGEOUS-ET**  
71290950 TL TD  
VG-85 VV+V 2-06 GTPI +2483  
PTA +1996M +82F +64P 79%R 8/2015  
PTA +687NM +.03%F +.01%P  
PTA +4.6PL 2.87SCS +1.6DPR 6.4%DCE  
PTA +1.53T -.22UDC +.38FLC 77%R 8/2015  
• Her Capital Gain son, IHG Capital Gage GTPI 2656, headed to Jetstream!

**DA-SO-BURN MOM EARNHARDT P**  
68972328 TR PO TV TL TY TD  
VG-86 VVV+ 2-05 GTPI +2133  
**PINE-TREE 2149ROBST 4846-ET**  
69804610  
VG-86 VEV+V DOM 3-01 GTPI +2527  
2-04 2 365 32001 4.7 1520 3.4 1097

**SEAGULL-BAY SUPERSIRE-ET 69981349**  
TV TL TY TD  
VG-87 VVVV 3-07 GM GTPI +2715  
**B-ENTERPRISE SUPER GIGI-ET 69386235**  
VG-88 EEEVV DOM 4-06 GTPI +2107  
PTA +1409M +13F +33P 82%R 8/2015  
PTA +273NM +2.5PL 2.95SCS +2.3DPR 8.0%DCE  
PTA +1.99T +.69UDC +1.14FLC 82%R 8/2015  
2-03 2 124 13660 3.5 480 3.1 419 (Inc)

Terms: Cash unless prior arrangements are made specifically with seller and sale management is advised of these special terms in advance of the sale.

**3rd Dam: Brigeen Outside Gigi**  
(2E-90 EEEV GMD DOM)  
5-08 2 365 60160 4.2 2522 3.1 1880  
1st ME Milk & 1st ME Fat  
LIFE 1578 167080 4.0 6600 3.2 5265

**4th Dam: Brigeen Aer Gwyneth**  
(2E-93 EX-MS GMD DOM)  
6-05 2 365 48150 3.3 1576 2.8 1371  
LIFE 2094 219870 3.3 7288 2.9 6372

**5th Dam: Brigeen Integrity Gwen-ET**  
(VG-86 GMD)  
3-07 2 365 39520 3.8 1518 2.6 1027  
LIFE 1478d 122980 3.6 4368 2.7 3303

**6th Dam: Roylane Leadman Glory-ET**  
(VG-89 GMD DOM)  
3-06 2 365 36360 3.6 1127 2.9 893

**7th Dam: Western-Cascade Mark Bella**  
(EX-91 GMD DOM)  
3-06 2 365 36360 3.7 1354 3.0 1091

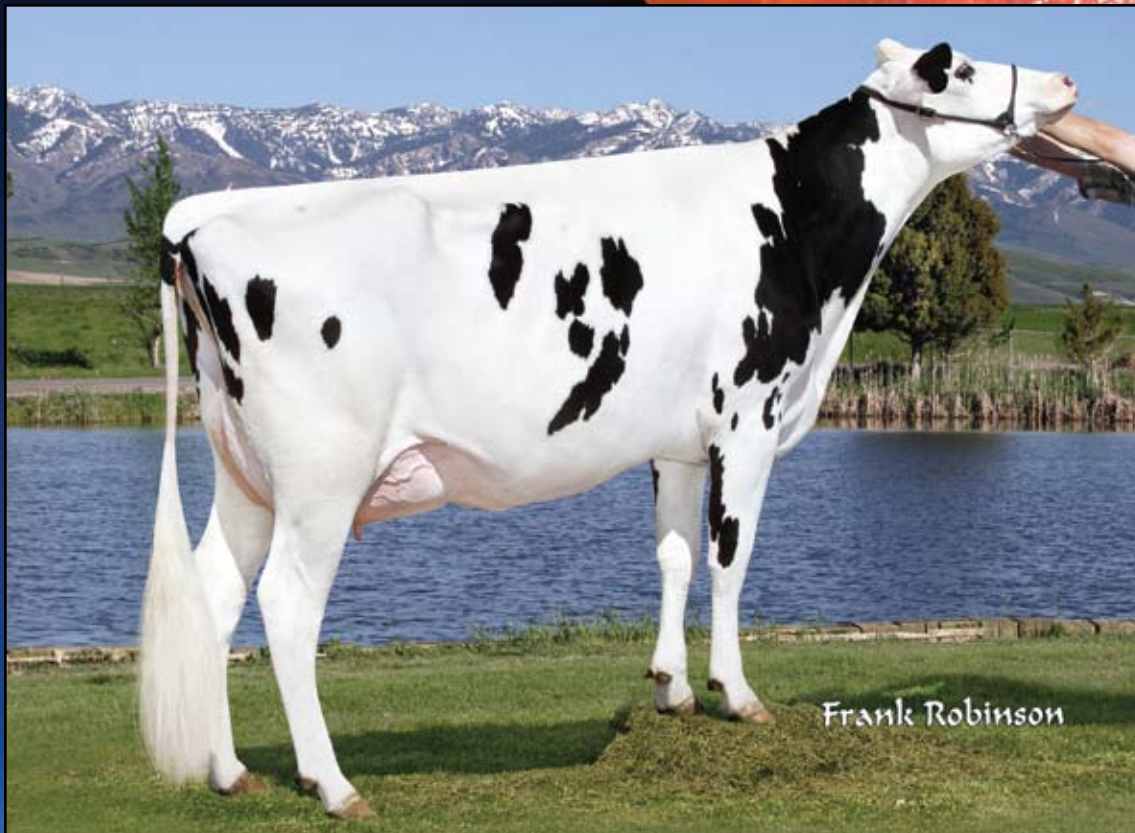
**8th Dam: Western-Cascade Bell Glory**  
(2E-90 GMD DOM)  
7-10 2 305 34840 3.3 1155 3.0 1037  
LIFE 1525d 139210 3.6 5018 3.1 4295

**9th Dam: Riceville Peachum Glory-OC**  
**10th Dam: Echomont Citation Glory-OC**  
(VG-85)  
5-04 2 365 27220 3.8 1050

**11th Dam: Walsterway Count Glory (3E-90)**  
7-05 2 365 27110 4.4 1183  
LIFE 2829 153424 4.6 7029

**12th Dam: Walsterway Regius Gerry (EX-90)**  
6-04 2 365 29820 4.9 1448





*Roorda Obsvr Majic 15272-ET (VG-86)*  
 Full Sister to the Dam of Lot 29

29

**Roorda SS McJoni 15887-ET \*TL \*TD**

Born 1/21/2013 Reg. 71013761 100%RHA

9K GTPI +2556 / GLPI +3068 / DGV +3092

PTA +1863M +79F +48P 76%R 8/2015

PTA +773NM +.03%F -.03%P +7.1PL 2.87SCS +1.6DPR 5.2%DCE

PTA +1.66T +1.60UDC +.27FLC 75%R 8/2015

CAN GPA +2277M +101F +67P

• Due 1-8-16 to an Angus Bull

*Innovative Holstein Genetics, LLC*  
 c/o Declan Patten  
 1827 E 7750 S Rd  
 Chebanse, IL 60922  
 815/697-2700

[declan.patten@butlerview.com](mailto:declan.patten@butlerview.com)

Terms: Cash unless prior arrangements are made specifically with seller and sale management is advised of these special terms in advance of the sale.

**SEAGULL-BAY SUPERSIRE-ET**  
**69981349 TV TL TY TD**

VG-87 VVVV 3-07 GM GTPI +2715

PTA +2386M +110F +72P 99%R 8/2015

PTA +934NM +.07%F +.00%P 85%US

PTA +7.2PL 2.94SCS +.7DPR 4.2%DCE

PTA +1.62T +.65UDC +.75FLC 97%R 8/2015

**ROYLANE SOCRA ROBUST-ET 64966739**

TR TV TL TD

VG-88 VVVV 3-03 GM GTPI +2514

PTA +1074M +78F +46P 99%R 8/2015

**AMMON-PEACHEY SHAUNA-ET**

**66228178**

VG-87 VEV+V GMD DOM 2-04 GTPI +2226

2-01 3 365 35116 4.1 1427 3.3 1146

• Nominated Global Cow of the Year 2013

**ROORDA OB MCKENZIE 15267-ET**

**70338772**

GTPI +2309

PTA +645M +37F +22P 83%R 8/2015

PTA +530NM +.05%F +.01%P

PTA +6.1PL 2.90SCS +.21DPR 5.8%DCE

PTA +1.80T +2.36UDC +.48FLC 78%R 8/2015

• Full Sister to Roorda Obsvr Majic 15272-ET

(VG-86), sold for \$55,000 in the 2011 Destination

Vegas Sale

**DE-SU OBSERVER-ET 65917481**

TR TV TL TY TD

EX-90 EVEV 4-06 GM GTPI +2198

**ROORDA SHOTTLE 6802-ET 65415701**

VG-88 EVV+E DOM 4-06

5-02 3 314 39190 3.6 1423 2.9 1133

4-01 3 347 34300 3.6 1235 3.1 1066

2-00 3 365 32590 3.6 1180 3.1 1000

LIFE 1355 127570 3.8 4809 3.1 3967

**3rd Dam: Seagull-Bay Manat Mirage-ET**

(EX-90 VEVVE DOM)

3-06 3 365 35900 3.8 1364 3.4 1229

• Sold for \$20,000 in the Seagull Bay Dispersal

• 1 EX & 26 VG Daughters

**4th Dam: Lynmead Cleitus Minnow-ET**

(2E-91 EEEVV GMD DOM)

4-10 3 365 49550 3.7 1857 3.2 1592

7-00 3 365 47140 3.5 1637 3.1 1479

LIFE 2626 255910 3.7 9446 3.3 8481

**5th Dam: CMV Belwood Mindy-ET**

(VG-85 GMD DOM)

4-01 2 365 36341 3.6 1305 3.4 1239

**6th Dam: Briarpatch-R Misty-ET**

(VG-85 GMD DOM)

**7th Dam: Rilara Mars Las Ravena**

(EX-91 GMD DOM)

4-03 2 305 29030 4.6 1329

**8th Dam: Rag Apple Locust-Grove Charm**

(VG-86 GMD DOM)

5-02 2 26321 3.6 948



*EDG Christa Mogul 2080-ET*  
 Dam of Lot 30

30

## IHG Kboy 2080 Christa

*Born 6/30/2015 Reg. 840 3128968031 99%RHA*

13K GTPI +2552 / GLPI +3114 / DGV +3129

PTA +1300M +65F +49P 73%R 8/2015

PTA +686NM +.06%F +.03%P

PTA +5.2PL 2.71SCS +1.3DPR 3.9%DCE

PTA +2.26T +1.68UDC +1.10FLC 71%R 8/2015

CAN GPA +1700M +82F +74P +10C

*Innovative Holstein Genetics, LLC*

*c/o Declan Patten*

*1827 E 7750 S Rd*

*Chebanse, IL 60922*

*815/697-2700*

*declan.patten@butlerview.com*

Terms: Cash unless prior arrangements are made specifically with seller and sale management is advised of these special terms in advance of the sale.

### MORNINGVIEW MCC KINGBOY-ET

**72044077 99%RHA TV TL TY TD**

GTPI +2555

PTA +1466M +50F +42P 78%R 8/2015

PTA +602NM -.02%F -.01%P 100%US

PTA +4.8PL 2.79SCS +1.7DPR 4.5%DCE

PTA +3.00T +2.52UDC +2.22FLC 78%R 8/2015

### EDG CHRISTA MOGUL 2080-ET

**72437627**

77K GTPI +2546

PTA +894M +73F +46P 78%R 8/2015

PTA +728NM +.14%F +.07%P

PTA +5.6PL 2.67SCS +.6DPR 5.4%DCE

PTA +2.18T +1.93UDC +1.40FLC 76%R 8/2015

• Fresh 6-30-15

• Sold in the 2015 International Intrigue Sale, now at Pine-Tree Dairy milking 101lbs/day

• High RGZ test (+156 12/13)

• Backed by the Juror Faith family!

### DE-SU BKM MCCUTCHEN 1174-ET

**69990138 99%RHA TV TL TY TD**

EX-92 EEEE 3-08 GM GTPI +2468

### MORNINGVIEW SUPER MEGAN-ET

**68654508 TY**

EX-91 EEVVE DOM 4-11

2-08 2 365 33980 3.9 1318 3.2 1091

### MOUNTFIELD SSI DCY MOGUL-ET

**840 3006972816 TR TV TL TY TD**

GM GTPI +2532

### LANGS-TWIN-B CHRISTA-ET 66879944

50K GTPI +2220

PTA +1466M +50F +42P 78%R 8/2015

PTA +602NM +4.8PL 2.79SCS +1.7DPR 4.5%DCE

PTA +3.00T +2.52UDC +2.22FLC 78%R 8/2015

2-05 3 305 20810 3.7 760 3.4 711

• 4 Sons & daughters over 2400 GTPI!

Maternal Sister to:

*Langs-Twin-B Allyson-ET (VG-87 DOM)*

2-04 2 305 28430 3.9 1097 3.1 887

### 3rd Dam: Langs-Twin-B C-S Ashlyn-ET

(VG-86 VVVVVV GMD DOM 2Y)

2-03 2 365 30150 4.3 1306 3.4 1020

### 4th Dam: Ralma Finley C-F Chuckle-ET

(EX-90 EX-MS GMD DOM)

2-06 2 365 38960 3.4 1344 3.5 1365

LIFE 1232 102530 3.3 3349 3.6 3654

### 5th Dam: Ralma Christmas Fudge-ET

(VG-88 VVEEVV GMD DOM 2Y)

2-03 2 365 31810 4.1 1292 3.2 1027

Maternal Sister to Fudge:

*Ralma Durham Fireball-ET*

(EX-92 EX-MS GMD DOM)

2-05 2 365 33800 4.0 1364 3.4 1139

### 6th Dam: Ralma Juror Faith

(EX-91 EEEVVV GMD DOM)

4-02 2 365 47860 4.5 2165 3.1 1497

2-02 2 365 39540 4.3 1697 3.0 1205

LIFE 1352 133520 4.5 5986 3.3 4358

### 7th Dam: Ralma Leadman Fashion

(VG-89 VEEVVV 3Y)

4-10 2 365 40710 3.7 1494 3.0 1232

LIFE 1243 117710 3.6 4295 3.2 3743



**Ms Boyana Uno Brinley-ET**  
(VG-87 VG-MS)  
Dam of Lots 31 & 32

31

## Stunning-M Draco Brazil-ET

Born 7/28/2015 Reg. 840 3128648830 99%RHA  
GTPI +2582

PTA +623M +53F +.11% +31P .05% 8/15  
PTA +623NM +3.3DPR +7.7PL +2.67SCS  
PTA +2.54T +1.16FLC +2.48UDC 8/15

- Potential 11th Generation VG or EX from the Barbies!
- Housed at Synergy Genetics, NY

**MR COIN DRACO 15006-ET**  
840 3012574853 TV TL TY TD  
GTPI +2614  
PTA +1570M +66F +53P 75%R 8/2015  
PTA +811NM +.03%F +.02%P 100%US  
PTA +8.3PL 2.69SCS +1.5DPR 5.8%DCE  
PTA +2.04T +2.10UDC -.17FLC 74%R 8/2015

**MS BOYANA UNO BRINLEY-ET 71494817**  
99% RHA  
VG-87 VVV+V 3-00 GTPI +2367 / DGV +3062  
PTA +467NM +5.1PL 2.67SCS +1.9DPR 6.4%DCE  
PTA +3.06T +3.32UDC +2.30FLC 77%R 8/2015  
2-06 2 146 11140 3.8 418 3.0 336 (Inc)  
• Embryos from Brinley have been exported for over \$2,500/embryo!

**FARNEAR-TBR-BH CASHCOIN-ET**  
70354884 TV TL TY TD  
GTPI +2276  
**MISS OCD ROBST DELICIOUS-ET**  
840 3006989479  
VG-87 +EV+V DOM 3-05 GTPI +2688  
2-05 2 305 25780 3.5 908 3.3 841

**AMIGHETI NUMERO UNO-ET**  
17990915143ITA TV TL TY TD  
EX-90-HUN GM GTPI +2407  
**FARNEAR-TBR BOWSR BOYANA-ET**  
69822164 99% RHA  
VG-87 EVV+V 5-00 3K GTPI +2090  
PTA +2.13T +2.19UDC +2.11FLC 76%R 8/2015  
2-02 2 305 18950 5.6 1059 3.2 600  
• Sold for \$50,000 in the 2010 Destination Vegas Sale  
• Her 1st choice female sold for \$31,500 in the 2011 Planet Holstein Sale and \$30,000 in the 2011 Regancrest Summer Sale

Austin Yoder &  
Matthias Swartzentruber  
5731 St Rt 26E  
Montezuma, GA 31063  
478/244-9063  
austinyoder96@icloud.com

Terms: Cash unless prior arrangements are made specifically with seller and sale management is advised of these special terms in advance of the sale.

**3rd Dam: Klassic Mac Barb-ET**  
(VG-85 VG-MS 2Y)  
2-05 2 365 30440 4.0 1206 3.5 1068  
**4th Dam: Regancrest Barbi-ET**  
(VG-88 EX-MS DOM)  
2-00 2 365 26339 3.8 1012 3.3 892  
**5th Dam: Regancrest-PR Barbie-ET**  
(EX-92 EEEEE GMD DOM)  
2-06 2 365 31690 3.9 1237 3.3 1050  
HM All-American Jr. 3-Year-Old 2004  
**6th Dam: Regancrest Juror Brina-ET**  
(EX-92 EEEVE GMD)  
4-04 2 365 40640 3.6 1478 3.0 1217  
Grand Champion & BU IA Dist 1 Sh 2000  
Res. Grand Champion 2000 IA State Fair  
**7th Dam: Regancrest Aerostar Bert-ET**  
(EX-90 EEEVV GMD DOM)  
5-02 2 365 37790 3.6 1357 3.2 1215  
**8th Dam: Regancrest Mark Chairman Bea**  
(2E-91 GMD DOM)  
7-09 2 365 33630 3.8 1276 3.1 1052  
**9th Dam: Regancrest Board Chairman Bea**  
(EX-90 EX-MS)  
5-09 2 365 26010 4.1 1059 3.4 884  
**10th Dam: Regancrest Apache Standout Bea**  
(VG-86 EX-MS)  
LIFE 2432 131940 3.6 4744



**Ms Boyana Uno Brinley-ET**  
(VG-87 VG-MS)  
Dam of Lots 31 & 32

**32**

**Stunning-M Kingboy Babe-ET**

Born 7/28/2015 Reg. 840 3128648831 99%RHA  
GTPI +2551

PTA +834M +52F +.08% +31P .03% 8/15  
PTA +624NM +1.5DPR +5.4PL +2.61SCS  
PTA +3.17T +2.26FLC +2.81UDC 8/15

• **High Type!!**

• **Potential 11th Generation VG or EX from the Barbies!**  
• **Housed at Synergy Genetics, NY**

**MORNINGVIEW MCC KINGBOY-ET**  
**72044077 99%RHA TV TL TY TD**

GTPI +2555  
PTA +1466M +50F +42P 78%R 8/2015  
PTA +602NM -.02%F -.01%P 100%US  
PTA +4.8PL 2.79SCS +1.7DPR 4.5%DCE  
PTA +3.00T +2.52UDC +2.22FLC 78%R 8/2015

**MS BOYANA UNO BRINLEY-ET 71494817**  
**99%RHA**

VG-87 VVV+V 3-00 GTPI +2367 / DGV +3062  
PTA +467NM +5.1PL 2.67SCS +1.9DPR 6.4%DCE  
PTA +3.06T +3.32UDC +2.30FLC 77%R 8/2015  
2-06 2 146 11140 3.8 418 3.0 336 (Inc)

• **Embryos from Brinley have been exported for over \$2,500/embryo!**

**DE-SU BKM MCCUTCHEN 1174-ET**  
**69990138 99%RHA TV TL TY TD**

EX-92 EEEE 3-08 GM GTPI +2468

**MORNINGVIEW SUPER MEGAN-ET**  
**68654508 TY**

EX-91 EEVVE DOM 4-11  
2-08 2 365 33980 3.9 1318 3.2 1091

**AMIGHETI NUMERO UNO-ET**  
**17990915143ITA TV TL TY TD**

EX-90-HUN GM GTPI +2407

**FARNEAR-TBR BOWSR BOYANA-ET**  
**69822164 99%RHA**

VG-87 EVV+V 5-00 3K GTPI +2090  
PTA +2.13T +2.19UDC +2.11FLC 76%R 8/2015  
2-02 2 305 18950 5.6 1059 3.2 600

• **Sold for \$50,000 in the 2010 Destination Vegas Sale**  
• **Her 1st choice female sold for \$31,500 in the 2011 Planet Holstein Sale and \$30,000 in the 2011 Regancrest Summer Sale**

**Austin Yoder &**  
**Matthias Swartzentruber**  
5731 St Rt 26E  
Montezuma, GA 31063  
478/244-9063  
[austinyoder96@icloud.com](mailto:austinyoder96@icloud.com)

Terms: Cash unless prior arrangements are made specifically with seller and sale management is advised of these special terms in advance of the sale.

**3rd Dam: Klasic Mac Barb-ET**  
(VG-85 VG-MS 2Y)

2-05 2 365 30440 4.0 1206 3.5 1068

**4th Dam: Regancrest Barbi-ET**  
(VG-88 EX-MS DOM)

2-00 2 365 26339 3.8 1012 3.3 892

**5th Dam: Regancrest-PR Barbie-ET**  
(EX-92 EEEEE GMD DOM)

2-06 2 365 31690 3.9 1237 3.3 1050  
HM All-American Jr. 3-Year-Old 2004

**6th Dam: Regancrest Juror Brina-ET**  
(EX-92 EEVVE GMD)

4-04 2 365 40640 3.6 1478 3.0 1217  
Grand Champion & BU IA Dist 1 Sh 2000  
Res. Grand Champion 2000 IA State Fair

**7th Dam: Regancrest Aerostar Bert-ET**  
(EX-90 EEVVV GMD DOM)

5-02 2 365 37790 3.6 1357 3.2 1215

**8th Dam: Regancrest Mark Chairman Bea**  
(2E-91 GMD DOM)

7-09 2 365 33630 3.8 1276 3.1 1052

**9th Dam: Regancrest Board Chairman Bea**  
(EX-90 EX-MS)

5-09 2 365 26010 4.1 1059 3.4 884

**10th Dam: Regancrest Apache Standout Bea**  
(VG-86 EX-MS)

LIFE 2432 131940 3.6 4744

# ~ Index ~

<b>Consignor</b>	<b>Lot #</b>
<b>Butler, Jeff.....</b>	<b>18, 21, 22, 25</b>
<b>Butler, Jeff &amp; Dan Retzke .....</b>	<b>17</b>
<b>Cardigan Syndicate.....</b>	<b>4, 5</b>
<b>Endeavor Holstein Genetics, LLC .....</b>	<b>1, 2</b>
<b>Innovative Holstein Genetics, LLC ..</b>	<b>8, 9, 10, 11, 13, 28, 29, 30</b>
<b>Midas Touch Genetics.....</b>	<b>16</b>
<b>Progenis LP .....</b>	<b>6, 7, 14, 15, 19, 20, 26, 27</b>
<b>Sofia Syndicate .....</b>	<b>3</b>
<b>St. Jacobs ABC, Inc.....</b>	<b>23, 24</b>
<b>Westcoast Holsteins.....</b>	<b>12</b>
<b>Yoder, Austin &amp; Matthias Swartzentruber .....</b>	<b>31, 32</b>

# your solutions for #movinggeneticsforward

Bull Code	Bull Name	GTPI	NMS	Milk	Fat	Prot	Type	UDC	PL	SCE
534H000038	IHG <b>GLAMOR-ET</b>	+2598	+760	+1636	+87	+61	+2.29	+1.09	+5.2	+7.3
534H000042	IHG <b>VECTOR-ET</b>	+2584	+671	+1644	+66	+53	+2.71	+2.41	+4.8	+8.4
534H000037	IHG <b>VICTORY-ET</b>	+2583	+708	+1993	+59	+57	+1.98	+1.26	+6.2	+8.7
534H000033	VIEW-HOME <b>CASHFLOW-ET</b>	+2566	+790	+652	+74	+41	+1.55	+1.71	+7.9	+7.2
534H000025	MR MOVIESTAR <b>MARDI GRAS-ET</b>	+2559	+728	+911	+70	+39	+2.16	+2.35	+6.9	+6.7
534H000041	MR <b>LAS VEGAS</b>	+2525	+625	+928	+49	+31	+1.99	+2.27	+5.5	+7.6
534H000036	MR <b>AMBASSADOR-ET</b>	+2518	+620	+1497	+62	+34	+2.51	+1.99	+5.1	+7.7
534H000026	EDG <b>DEMAN-ET</b>	+2507	+608	+578	+73	+37	+3.11	+2.68	+4.2	+8.4
534H000031	VIEW-HOME <b>POWERBALL-P-ET</b>	+2497	+639	+1208	+50	+57	+1.64	+1.21	+4.4	+7.2
534H000034	MR HUE <b>HEFFNER-ET</b>	+2448	+568	+896	+46	+53	+1.92	+1.38	+4.1	+7.3
534H000032	<b>MR KOOL-ET</b>	+2389	+567	+1356	+52	+48	+1.60	+1.28	+3.2	+6.6
534H000030	RI-VAL-RE <b>SALSA RC-ET</b>	+2374	+577	+326	+54	+15	+2.09	+2.63	+6.2	+7.1
534H000022	EDG CT <b>ITUNES-ET</b>	+2350	+569	+251	+73	+35	+1.52	+0.81	+4.1	+6.2
534H000012	MR MOVIESTAR <b>MODEL-ET</b>	+2343	+608	+958	+34	+41	+1.02	+0.84	+7.6	+6.6
534H000035	MR <b>PRESIDENT-ET</b>	+2323	+551	+311	+47	+20	+1.59	+1.75	+6.1	+8.1
534H000040	MR <b>BRASH-ET</b>	+2291	+371	+239	+38	+11	+3.66	+3.16	+2.3	+6.8

## SULLY CASHCOIN MONIQUE VG86 2yr

Daughter of CASHCOIN



Owned by Stanton Bros. Iderton, ON

Photos courtesy of Patty Jones. | Image Reversed. | CDN/CDCB 08/2015

WORLD DAIRY EXPO

SEPTEMBER 29  OCTOBER 3, 2015

Come see us at WDE 2015

Booth AL190 | 3 Star Sponsor



# THORN CREEK

---

Insurance Services Inc.

- Global Livestock Mortality Insurance
- Global Livestock Export Transit Insurance
- Global "Insitu" Cover for Feedlots, Dairies and All Livestock Operations



Troy Alexander  
1297 Toronto Rd, Suite C  
Springfield, IL 62712

Cell: 217.899.3426  
Office: 217.503.4111  
Fax: 413.523.0250

Email: [troy@thorncreekinsurance.com](mailto:troy@thorncreekinsurance.com)  
[ThornCreekInsurance.com](http://ThornCreekInsurance.com)

# *Sales Terms and Conditions ~ Butler Auctions, LLC*

**SALE:** All cattle, choice of offspring, or genetic material (embryos, semen, or other containing DNA) listed in the catalog that includes these terms ("Catalog") shall be offered for sale by auction to the highest bidder from the location and at the dates and times set forth at the front of the Catalog ("Sale"). All bidding is open to the public. Butler-Fellers Auction, Inc. ("Sale Management") will conduct the auction, settle any bidding disputes, and declare the winning bidder for all items in the Sale. In the event of a bidding dispute, the Sale Management reserves the right to rebid the item in dispute or take such other action it deems appropriate. The Sale Management's decision on all matters concerning the winning bidder and the amount bid shall be final. The winning bidder ("Buyer") agrees to purchase the item auctioned pursuant to the terms and conditions set forth herein.

Buyer should examine all animals purchased immediately after the purchase and before the close of the Sale, and if found not to be as represented, file a complaint with the Sale Management before the close of the Sale. If the Buyer does not file a complaint with the Sale Management before the conclusion of the Sale, the Buyer cannot challenge the representations of the Seller through the Sale Management. **BUYER ASSUMES FULL OWNERSHIP OF ANIMALS AT SALE SITE TOGETHER WITH ALL RISKS.**

Corrections and additions to the information in this Catalog may be made through printed updates made available at the Sale or by announcements from the auction stand prior to the auction of the item. Buyer shall be bound by terms of sale so announced.

**By-Bidding.** Bidding directly or indirectly by the sole owner of any animal or genetic material is prohibited unless the intention to bid is disclosed specific to each listing in the Catalog and announced when the animal or genetic material is auctioned. However, bidding by any member(s) of a partnership, syndicate, or other entity owning less than 100% ownership interest in the animal or genetic material is permitted.

**Pedigree Information.** All production, classification, type and production summaries are current. Only information recorded on Holstein Association USA pedigrees is used. Any production or classification records supplied by the Seller will be identified as being provided by Seller. Records in progress are identified as such.

**Genomic Information.** If genomic information on the animal or genetic material is available, it must be dated and disclosed at or before the time of sale.

**Embryo Transfer.** All registered animals or genetic material that have resulted from embryo transfer will be identified with one of the following suffixes in the name: ET, ETS (from split embryo), or ETN (from nuclear transfer). If unregistered, the appropriate technology will be identified. Donor dams shall also be identified.

## **PAYMENT TERMS:**

**General Payment Terms.** Buyers are required to pay for purchases in cash or by check at the conclusion of the Sale, unless other payment terms are specifically: 1) stated in the Catalog or an Update Sheet distributed at the Sale; or 2) agreed to by both the Seller and the prospective buyer prior to the sale and Sale Management is notified in writing. Absentee Buyers purchasing through Sale Management or agents over the phone or otherwise are required to make payment on the business day following the Sale. There will be no exceptions to these payment requirements.

**Choice of Flush Payment Terms.** For any sale in which Buyer is purchasing the right to Buyer's choice of a calf from particular mating between a specific cow and bull ("Flush") of a particular sex and/or with specific characteristics ("Choice"), payments shall be required as follows:

35% Due at the conclusion of the sale; and

65% Due upon the earlier of Buyer's selection of the calf or 30 days after presentation of genomic test results for the youngest calf in the Flush.

Unless other payment terms are specifically: 1) stated in the Catalog or an Update Sheet distributed at the Sale; or 2) agreed to by both the Seller and the Buyer prior to the sale and Sale Management is notified in writing.

## **CHOICE OF FLUSH TERMS.**

**Selection.** Seller shall promptly notify Buyer of the genomic testing results for each calf in the Flush that meets the criteria of the Choice. Buyer of the Choice shall select and take possession of the selected calf within 30 days of receipt of the genomic test scores for the youngest calf in the Flush ("Selection Period"). If Buyer fails

to make the selection within the Selection Period, Buyer will be deemed to have selected the calf with the highest GTPI score of the Flush that is sound, healthy, and meets the Choice criteria. Buyer shall pay Seller a boarding fee of \$10.00 per day for each day that Seller remains in possession of the Choice calf after the expiration of the Selection Period.

**Buyer's Default on Choice.** Should Buyer fail to take possession or make the payments required hereunder, Seller may proceed with any legal means necessary to enforce the terms hereunder. Seller may seek specific performance requiring the Buyer to complete the sale; file suit against Buyer for damages, including attorney's fees and court costs; or Seller, at its sole option, can terminate the contract for Buyer's failure to perform and Seller shall have no obligation to return Buyer's down payment. If the Buyer fails to make payment or take possession of the Choice Calf within 60 days after expiration of the Selection Period, the Seller may but shall not be obligated to sell the Choice calf at a public sale after providing Buyer written notice at least 10 days prior to such sale. Buyer shall be responsible for all costs associated with such sale.

**Documentation and Exams.** Seller of Choice shall complete all blood typing, health checks, and registrations of the calf prior to transfer. Upon selection of Choice by Buyer, Seller will promptly transfer the calf's registration and any other licensing or certificates to the Buyer's name.

**Inability to Produce Choice.** Should the specified Flush fail to produce a sound healthy calf of the sex and characteristics specified in the Choice and the Dam dies, becomes unable to produce embryos, or proves unable to produce sound healthy offspring, the Buyer shall be entitled to a refund from the Seller of the deposit paid for the Choice. No interest or any other reimbursements are due to Buyer.

**Failure to Produce Choice.** Should the specified Flush fail to produce a sound healthy calf of the sex and characteristics specified in the Choice, the Buyer shall have the option, in Buyer's sole discretion, to request in writing a refund of the deposit paid for the Choice or to fulfill the Choice from the next Flush of the Dam that is not committed to a third party (by choice or similar contract) at the time the first Flush fails and produces a sound healthy calf of the sex and with the characteristics specified in the Choice. The option to fulfill the Choice on a subsequent Flush shall only apply to the first uncommitted Flush from the Dam that includes a calf of the sex and with the characteristics specified in the Choice. If Buyer elects not to accept the qualifying calf as fulfillment of the Choice, the Buyer shall be entitled to a refund and shall have no further options to purchase under the Choice. Any agreement between the parties to alter these terms must be in writing and signed by both parties to be enforceable. Neither Buyer or Seller shall be responsible for reimbursing the other party for boarding fees, feed expenses, transportation expenses, or interest for the failure to produce Choice or the substitute calf. If the Buyer fulfills the Choice with a calf from an alternate Flush, the payment schedule will remain the same with respect to age of calf selected.

Any disputes regarding Choice purchases are strictly between Buyer and Seller. Sale Management is not liable for any failed Choice, and such failure will not entitle either party to a refund of any sale commission paid. Upon request Sale Management will mediate any dispute concerning Choice between the Buyer and Seller.

**Failure to Meet Breeding Warranty.** Should the calf selected by the Buyer under the Choice not meet the Breeding Warranty specified herein, the Seller will refund to Buyer the full purchase price paid for the Choice, less the salvage value of the animal. No boarding fee, feed expense, transportation expense, or interest is due from the Buyer or Seller.

## **WARRANTIES AND LIMITATIONS.**

**General Warranties and Limitations of Warranties.** Except as specifically provided herein, the animals and genetic materials being auctioned at this Sale are being sold "As Is" and "Where Is" without representation, warranty, or guarantee as to quantity, quality, character, condition, size, or kind, or that it is in condition or fit to be used for the purpose for which intended.

Seller warrants and represents to Buyer and to Sale Management with respect to each animal and genetic material auctioned at the Sale, the following:

1) Seller has clear and merchantable title to the animal that is not subject to liens or encumbrances.

2) Seller has all rights and authority required to sell the animal at the Sale subject to the terms and conditions provided herein.



3) To the best of the Seller's knowledge, the animal is sound and healthy in every respect and embryos have been recovered, processed, frozen, transferred and graded in keeping with IETS recommendations unless otherwise noted in the Catalog, Update Sheet, or announced at the Sale. Every precaution will be taken to represent the physical condition of each animal exactly as is known. The condition of the Heifers' udders following calving for Heifers that have never calved is in no way guaranteed.

**Breeding Warranty.** Seller warrants to Buyer that the animals auctioned at the Sale are Breeders as specified below:

**Males.** A "Breeder" will produce semen capable of fertilizing a cow and that is freezable meeting A.I. standards. Bulls shall be considered a Breeder unless it reaches 18 months of age and fails to sire offspring after being used for 2 months on cows known to be Breeders or it fails a breeding soundness exam administered by a licensed veterinarian.

**Females.** A "Breeder" will be capable of conceiving by natural service, carrying, and giving birth to a calf. Any female between the ages of 21 months and 7 years when sold are guaranteed to be a Breeder with the exception of a female carrying a pregnancy that is the result of an embryo transfer.

Females bred prior to the Sale and pronounced "in calf" are presumed to be pregnant but the pregnancy of such animal is not guaranteed unless such guarantee is specified in the Catalog, Update Sheet, or announced at the Sale. The Seller makes no warranty that pregnant cows will deliver or carry the calf full term.

**Claims.** Buyer must make any claim under the Breeding Warranty by submitting a written claim to the Seller before the later of 3 months after the Sale or the animal reaches 20 months of age for males or 23 months of age for females. The written claim must include the animal's examination records, the steps taken to breed the animal, and a statement by a licensed veterinarian indicating the animal's inability to breed. Upon receipt of the claim, the Seller will have 6 months to determine the animal's breeding ability, through examination by a competent veterinarian or reproductive technician or by breeding the animal. During this examination period, the Buyer shall cooperate with any testing requested by Seller, at Seller's cost, and at Seller's request shall return the animal to the Seller. If the animal proves to be a Breeder, the Seller shall provide Buyer with such proof and the animal will be returned to the Buyer. All transportation of the animal shall be at Buyer's expense.

**Limitation of Breeding Warranty.** Unless the Buyer and Seller otherwise agree in writing, the Buyer's sole and exclusive remedy for the failure of Breeding Warranty is the refund of the purchase price, upon expiration of any applicable cure period, and return or disposition of the animal as directed by the Seller. The Breeding Warranty shall be void if the Buyer recovers embryos or oocytes or attempts to super-ovulate the animal, unless Buyer and Seller set out such a warranty in a separate written agreement.

**Embryo Transfer Guarantee.** Any embryo transfer guarantee or warranty is strictly between Buyer and Seller and shall be documented in a separate written agreement by the parties. Sale Management makes no guarantee as to the viability or transferability of any embryos auctioned at the Sale.

**ALL WARRANTIES CONTAINED HEREIN, UNLESS TERMINATED EARLIER, WILL CEASE UPON THE RESALE OF AN ANIMAL OR GENETIC MATERIAL.**

## **GENERAL TERMS**

**Conditional Contracts on Animals.** Because of the elite genetic status within the Holstein breed of the animals and genetic materials sold through this Sale, Sellers often are able to secure conditional contracts for the calves being sold that are assignable to Buyer. Prospective buyers are encouraged to review such contracts prior to purchase. All such contracts are conditional with expirations and other specific criteria that the calf and the Buyer must meet for the contract to become effective. It is the Buyer's responsibility to be aware of the terms of any such contracts and to discuss the contract details with Seller (not Sale Management) prior to purchase.

**Animals' Health.** Seller will provide an Interstate Health Certificate to Buyer for animals sold at the Sale. Animals offered for sale have tested negative for: Brucellosis (except baby calves and official calfhod vaccinated females under 20 months old) and Tuberculosis (except calves under 4 months old) within 30 days of the Sale. If Seller has tested (not required) the animal for Blue Tongue, Leukosis, EHD, Johnes, Anaplasmosis, or BVD, Seller shall disclose the test results to prospective buyers upon request. Animals are not required to test negative for Blue Tongue, Leukosis, EHD, Johnes, Anaplasmosis, or BVD to be included in the Sale.

Buyer shall be solely responsible for ensuring that any calf it purchases at the Sale meets the health requirements of Buyer's State or Country. Prospective buyers should discuss the status of any required tests or inspection with Seller prior to purchase. Animals are not guaranteed to have been tested or to qualify for entrance into any particular State or Country. Any additional health testing required will be at Buyer's expense and results are not guaranteed.

**Transfer of Registered Ownership.** For all registered Holsteins and embryos, Seller, at its cost, will take all actions necessary to transfer ownership of the animal or embryo to the Buyer on the records of Holstein Association USA and a certificate of registration showing Buyer's ownership will be provided to the Buyer.

**Transportation.** Buyer is solely responsible for arranging and transporting any animal it purchases at the Sale. Sale Management will be available to assist Buyer in arranging transportation for animals purchased at the Sale. However, Buyer bears all costs, risks, and responsibility for the animal and its transportation.

**Risk and Mortality Insurance.** Seller shall be responsible for and bear the sole risk of the animal's injury or death until sold. Buyer assumes the risk of the animal's injury or death when Buyer is pronounced the winning bidder by the auctioneer. Insurance may be purchased at the Sale for Seller's protection before the Sale and for Buyer's protection after the Sale. Sale Management encourages everyone to ensure that they have appropriate insurance coverage. For purchases made on terms, the parties are encouraged to purchase insurance on the animal for at least the unpaid balance with Buyer and Seller listed as loss payee.

**Errors and Omissions.** The material in this Catalog has been carefully edited. If any errors or omissions are discovered, they will be corrected in an Update Sheet or announced at the Sale. Such Update Sheets or announcements at the Sale take precedence over the information printed in the Catalog.

**Accidents.** The Sale Management, the Seller, the Buyer, and the owner of the location of the Sale are not responsible for the condition of the grounds or the behavior of the animals and disclaim any liability in the event of personal accident or property loss.

**Limitation of Liability.** Except as otherwise provided herein, each party will use all reasonable efforts to meet the party's obligations hereunder, but in the unlikely event that a party is unable to fulfill its obligations hereunder for any reason, the parties agree that the other party's liability, in the absence of fraud, will not exceed the amount paid for the animal or genetic material and any reasonable transportation costs as provided hereunder. UNDER NO CIRCUMSTANCES EXCEPT FRAUD WILL BUYER, SELLER, OR SALE MANAGEMENT BE LIABLE FOR LOST PROFITS OR ANY OTHER INCIDENTAL CONSEQUENTIAL, SPECIAL, OR PUNITIVE DAMAGES WHETHER IN CONTRACT OR TORT, INCLUDING, WITHOUT LIMITATION, NEGLIGENCE, STRICT LIABILITY, OR OTHERWISE WHICH ARISE OR MAY ARISE OUT OF OR RELATE TO THIS TRANSACTION.

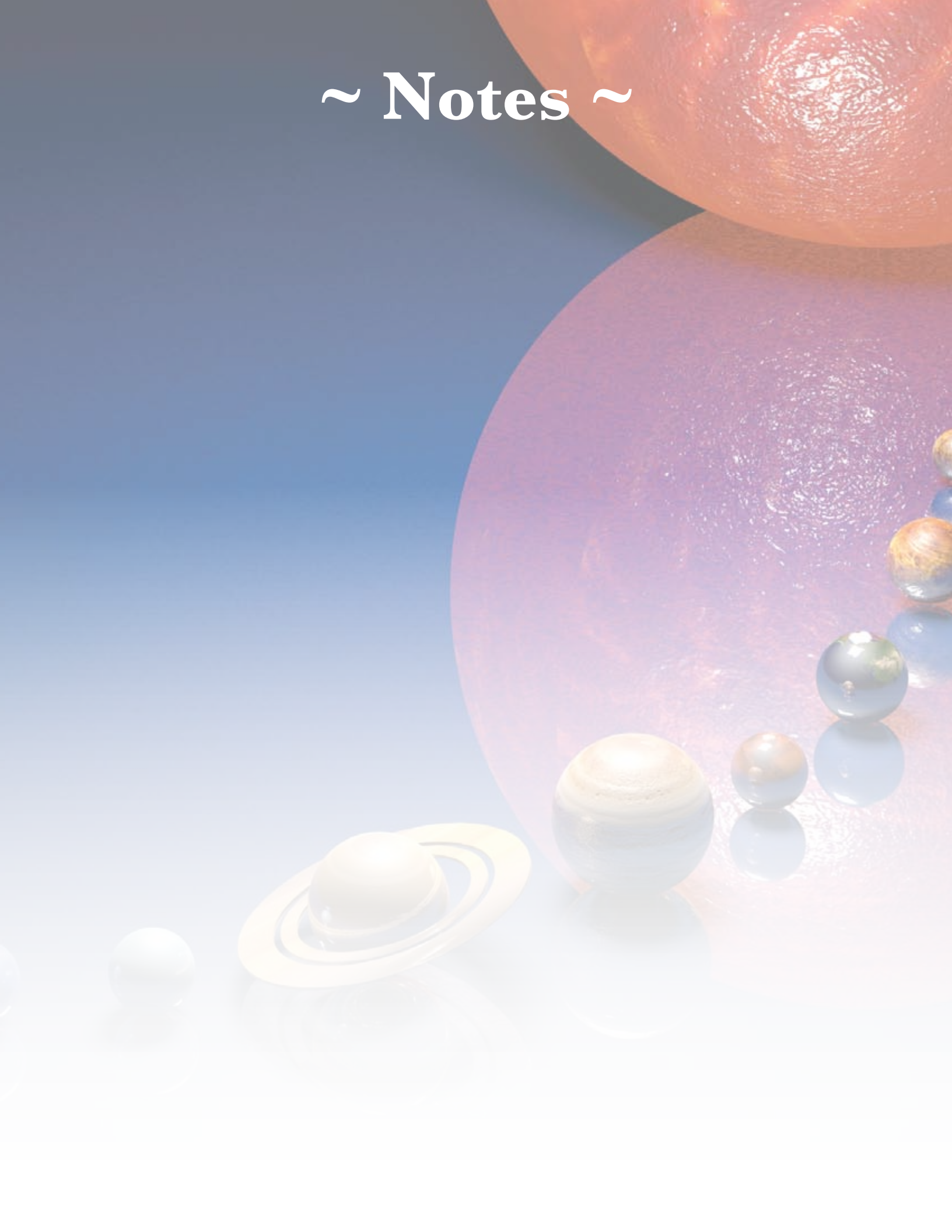
**Severability of Invalid Terms.** In the event any provision or portion of these terms and conditions is held to be invalid or unenforceable, such provision or portion thereof shall be severed herefrom, and the remaining provisions will remain in full force and effect, if the essential terms and conditions hereof remain valid.

**Costs and Attorneys Fees.** Except as otherwise expressly provided herein, each party shall pay its own costs and expenses in connection with the transactions contemplated herein. Notwithstanding the foregoing, all costs, expenses, and reasonable attorneys' fees incurred by the prevailing party in any action to interpret or enforce the party's rights under these terms and conditions may be recovered from the non-prevailing party.

**Applicable Laws.** The substantive laws of the State of Illinois (not its conflict of law principles) shall govern all matters arising out of, or relating to these terms and conditions and the transactions contemplated herein. Any action or proceeding seeking to enforce any provision of, or based on any right arising out of, the transactions contemplated herein may be brought by either party but only in the courts of the State of Illinois, or, if it has or can acquire jurisdiction, in the United States District Court sitting in Illinois, and each of the parties consents to the jurisdiction of such courts in any such action or proceeding and waives any objection to venue laid therein.

**THE AFOREMENTIONED TERMS AND CONDITIONS SHALL CONSTITUTE A CONTRACT BETWEEN THE BUYER AND THE SELLER AND SHALL BE BINDING UPON BOTH.**

# ~ Notes ~





*PARTY*

*at the*

*PLANET!!*