

Savage-Leigh Bellwood Linda

Consistent True Breeding

There are not many cow families as consistent as the Lindas. Everybody who milks a Linda or milked a Linda in the past is amazed by the great dairy frames, quality udders and silky black appearance. But besides that the cow family is also able to deliver high index figures and generate top sellers at sales worldwide.

History

The maternal line of the Savage-Leigh Bellwood Linda family has been present at Savage-Leigh Farm in Maryland for a very long time. In fact, longer than Savage-Leigh breeder Chip Savage can remember. However, their career in the spotlight really kicked off with Bellwood Linda. When the dam of Linda, Savage-Leigh Star Linda VG-87-USA, had to be mated, breeder Chip Savage was interested in using one of the higher index sires. Chip explains, "At that time people were searching for high index cows and Bellwood was one of the high TPI sires and seemed to sire cows with good frames. I thought that this would be a good mating on the Blackstar and they could support Bellwood with their great udders, which has always been one of the strongest points of this cow family." So Chip bought five units of Bellwood to make the mating, he used two units to breed the Blackstar and the other three remained in the tank until Linda was milking.

"As a young calf I liked Linda but she was a bit too strong to show and her index was not high enough to generate a lot of interest," according to Chip. However, as soon as Linda freshened, in combination with an increasing index and placing third in the junior two-year-old class at Louisville, the interest started to grow. After she calved again as a three-year-old and was nominated All-American, the interest in Linda became overwhelming, "Sire analysts and breeders from all over the world were interested in buying something from Linda".



Tom Mercuro, Mercuro Farms

"I never worked with a cow family from which I got so many good calves and cows, they all have that great open dairy frame and beautiful udders, that milk really well. This family is extremely consistent."

Early Offspring

When interest in Linda peaked, Chip was already milking her first daughters and in total Linda would have 30 Very Good or Excellent daughter in the U.S. Chip states, "It was a really exciting time for me, I was able to sell many embryos and her offspring topped at many sales."

Dixie-Lee Aaron sired the early popular daughters of Linda. Savage-Leigh Lottery EX-91-USA was the highest classified Aaron daughter of Linda and had a son by Hidden-View Best who did really well in Japan, Tan-Rok Darvish. Nowadays, he has almost 1800 daughters in his proof. Another son by Outside, Savage-Leigh Lucius, is owned by Select and has over 4500 daughters in his proof. A full sister to Lucius, Savage-Leigh Lauren scored EX-91-USA. From another Aaron sister, Savage-Leigh Aaron Linny VG-88-USA, Select Sires tested a Champion son, Savage-Leigh Limelight, and he was popular as a proven bull, siring more than 3000 daughters. Limelight also has three full sisters classified of which two are Excellent. The VG-86-USA Champion daughter of Linny has an EX-92-USA Potter daughter, Cedar-Haven Potter Lizza EX-92-USA GMD DOM, owned by Thomas Priest, Pa.

The Durham Mating

The most successful mating on Linda was to Regancrest Elton Durham. Chip made the decision to mate Linda to Durham because at the time he was one of the hottest sires in the industry. Durham came from a great cow family and had a great score for udders, one of the trademarks of the Lindas. "Linda had a great udder, but her sire Bellwood wasn't known for great udders so in order to embed the great udder into the cow family I decided to use Durham," explains Chip. And he wouldn't regret this decision. The Durham mating resulted in two fantastic daughters Petinesca-I Durham Ladina VG-89-2YR-CAN and Savage-Leigh Licorice EX-92-USA.

Ladina

Even though she spent her career in the shadow of her famous full sister Licorice, Ladina left quite an impact on the breed on the female and male side. Her sons Lobo (s. Goldwyn) and Lander (s. Shottle) returned to the active line-up after testing. Ladner scores nowadays a solid +2223 GLPI with a +9 for Conformation. His Goldwyn brother Lobo scores +2399 GLPI and is popular in Europe due to his high components and his scores for teat placement especially with dairy farmers milking using an automatic milking system.

Ladina also has an EX-90-USA Tribute daughter and a VG-85-USA Goldwyn daughter owned by Tom Mercuro, Md. and Thomas Priest. However, her most popular daughter is Calbrett Shottle Lucy EX-94-USA, owned by Todd Whittier, Mass. and Cybil Fisher, Wis. Lucy has been extremely successful for this partnership, especially the mating



Savage-Leigh Gold Lona EX-92-USA
Winning Grand Champion honors at the 2013 Maryland State Fair



Savage-Leigh Licorice EX-92-USA GMD DOM
Grand Champion, New York Spring International Show 2006



Savage-Leigh Leona EX-96 2E
Winning Supreme Champion at the 2012 Maryland State Fair

with Mac. This mating resulted in Whittier-CF Mac Lucina VG-88-USA, the former No. 4 GTPI heifer in the world who sold for \$88,000 to Lookout Holsteins, Quebec and Ricardo Pesce, Argentina. Lucina has sons by Atwood at Semex (Lookout P Last Chance) and International Protein Sires (Lookout Pesce Atw Lets Go). Both sires receive great interest due to their high type index. Other full sisters of Lucina were successful in Europe for De Oosterhof Holsteins, Netherlands (Mac Lucinda VG-85-NL) and Hood Holsteins in Denmark (Hood Mac Lucy VG-89-DK). Golden Oaks Farms owns a VG-88-2YR-USA Atwood daughter of Shottle Lucy, while an EX-93-USA Goldwyn daughter is still owned by the Whittier Farms and Cybil Fisher partnership. This Goldwyn daughter has an interesting Dorcy daughter at LIM Holsteins in France who scores GTPI+2065 and +2.63 for Type.

Todd Whittier, Whittier Farms

“They are strong wide cattle that take care of themselves and are very aggressive. The udders on the whole family have been super.”

A different line from the Morty daughter of Durham Ladina is doing a great job in Italy, via daughters of Bolton and Man-O-Man. All.Nure Supersire (925) was one of the highest new tested European calves in September on the Canadian GLPI system scoring GPA-LPI+3192.

Licorice

The most popular and well-known daughter of Linda is the great Durham, Savage-Leigh Licorice EX-92-USA. “Licorice was special from the start,” states Chip Savage, “When she was only three months old I got the first offer to sell but she was special with great show potential so I decided to keep her.” And Licorice didn’t disappoint, going on to become a great show cow and also a phenomenal brood cow. After Licorice was named reserve and intermediate champion at the New York Spring Show in 2004 behind Hillcroft Melanie Leader, she came back in 2006 and became senior and grand champion defeating the champion from World Dairy Expo six months earlier. “I have many great memories about this cow family, but Licorice winning the grand champion title at such a prestigious show is my greatest,” says Chip without any hesitation. Licorice was HHM All-American Five-Year-Old 2006 and has been several times nominated All-American Produce of Dam (2012, 2011 and 2007).

Beyond her achievements in the show ring, Licorice’s biggest success may be her achievements as a brood cow. The index of Licorice followed a similar pattern to her dam, starting not very high according to Chip but increasing on every run, which resulted in a high demand

for embryos. For this reason, Licorice only calved two times and had a long career as an embryo donor being flushed to a wide range of bulls like: Toystory, Talent, Champion, Allen, Marion, Titanic, Goldwyn and Encore. This family proved to be highly consistent, delivering great results from every mating. And because the list of great daughters (Licorice has 34 Very Good or Excellent daughters in the USA alone) is so long we are only able to write down the highlights. One of the earliest daughters of Licorice was Savage-Leigh Titanic Lexey EX-90-USA. Lexey sold to Sandy-Valley Farms where she was flushed several times. The most successful flush was probably to the French Jocko son, Stol Joc. From this flush Jan van den Oord of Drakkar Holsteins in France bought four embryos resulting in four heifer calves.

Jan van den Oord, Drakkar

“They were not typical Stol Jocs, they were much more stylish, open-rib with great dairy frames and the ones that calved here had outstanding udders. For me these are the strengths of the cow family.”

Jan sold his first Stol Joc through the Eurogenes Online Heifer Sale for € 13,000 to Bouw Holsteins in the Netherlands. This heifer, DKR Sandy-Valley Lexus VG-85-NL, proved herself as a valuable investment. She is the dam of Bouw Mogul Lione GTPI+2395 +3.13T and Bouw Shamrock Lizette GTPI+2275 +2.91T. Lizette is the former No. 1 GTPI heifer in Europe and sold through the Holland Masters Sale 2012 for € 65,000 to RT Genetics (UK) Diamond Genetics and Hulstein (NL). Another Stol Joc, DKR Licorice VG-86-NL, sold through the Vente Drakkar in 2011 to B. Bredek of Westervolda Holsteins (NL) and was first in her class at the HHH-Show as a two-year-old. A third full sister, DKR Linda, sold at the Vente Drakkar Edition of 2013 to Johan Zwijnenberg. Linda is also a beautiful cow and will be shown at the SPACE show in France. Johan clipped and showed Linda at a show in Normandy and he became so excited about her potential that he decided to buy her. The fourth full sister still remains at Drakkar Holsteins where she has a daughter by Bradnick.

Another well-known daughter of Licorice, Savage-Leigh Lavish EX-94-USA (s. Talent) has an Advent son, Lavar, at St. Jacobs ABC and several excellent daughters by Shottle and Jasper. However, the most well-known daughter of Licorice is arguably Savage-Leigh Allen Leona EX-96-USA. The list of show results on this Allen daughter is long and impressive, winning several titles at the Maryland State Fair, Maryland Spring Show and Eastern Fall National. Leona was also second 125,000 lb. cow at World Dairy Expo 2012 and will show again on the colored shavings this year. Leona has several nice daughters by



Shottle, one of them is Savage-Leigh Leony EX-90-USA, owned by Diamond Genetics. Another Shottle daughter is owned by Majestic Holsteins from the UK, and has sons by Million and Planet at Genus/ABS. The full sister to Leona, Savage-Leigh Leola also has several great daughters including an EX-90-USA GTPI+2029 Shottle daughter owned by Mercurio and Priest.

The most successful mating on Licorice was Goldwyn resulting in multiple high scoring daughters. Two Goldwyn daughters who are still at Savage-Leigh, continue to turn heads, Savage-Leigh Gold Lona EX-92-USA and Savage-Leigh Gold Linda EX-91-USA. Savage-Leigh Gold Lona was recently crowned senior and grand champion at the Maryland State Fair and will show at World Dairy Expo this year. Lona has four Alexander daughters in Australia who are owned by Eclipse Holsteins and Terry Tout, Cowarol Holsteins. One was lost during an unfortunate accident but the other three continue to leave their mark. The highest scoring is Cowarol Eclipse Alex Licorice VG-87-2YR. She currently produces 35kg a day with 5%F and 3.6%P. The partnership also owns a VG-86-AUS Canyon-Breeze Allen daughter of Gold Linda.

Terry Tout, Cowarol Holsteins

"We bought into the Savage-Leigh family because of the outstanding show results of their Durham Licorice granddam and the profile the family was building. The family's strong points in our opinion would be the style of the cows, their great udder attachment and lovely temperament."

Chip mentions, "I think that the lines of Lona, Liza and Leona will be the family lines that keep developing towards the future."

Another Goldwyn daughter is owned by Morsan Farms, Savage-Leigh Gold Lyra. Lyra has an Aftershock daughter, Nobold Aftershock Lyra, who won her class at the UK Dairy Expo 2012 and is owned by Nobold Holsteins. The highest genomically tested daughter of Licorice is her Super daughter, Savage-Leigh Super Spot VG-88-2YR-USA and scores GTPI+1952.

High Sellers

It has already been mentioned but family members of Licorice have sold for high prices at many sales. The highest one is Savage-Leigh Lavisha (s. Toystory) who sold to Ludwig Farms, Ill. during the International Intrigue 2009 for \$340,000. Her full sister sold at the Field of Dreams Sale for \$48,000 to Stanton Bros Ltd, Ontario. At the Stars of Savage-Leigh 2007, Savage-Leigh Allen Leola sold for \$70,000 and at the Global Glamour Sale 2008 a Shottle daughter, Savage-Leigh Lola EX-93-USA, from Licorice sold for \$150,000.



DKR Sandy-Valley Lexus VG-85-NL
Sold through the Eurogenes Online Heifer Sale for €13,000



Bouw Shamrock Lizette GTPI+2275 (8/13)
Shamrock x DKR Sandy-Valley Lexus VG-85-NL (above)
Former No. 1 GTPI heifer in Europe and sold for €65,000 in the Holland Masters Sale 2012.

High Index

Another successful flush for Linda was with Skychief. The highest scored daughter from the flush is Savage-Leigh Louise EX-94-USA, who has an EX-92-USA Dundee, an EX-90-USA Durham and a VG-88-IT Elegant daughter in Italy at Al.Be.Ro. The Elegant has a Man-O-Man son at Semex with a GTPI of +2218, All. Nure Starblue-ET. The full sister of Starblue is now proving herself as a very valuable brood cow with two Supersire daughters indexing very high. All.Nure Supersire Eleonor scores +2417 for GTPI and +3390 GPA-LPI and her sister Eluana comes in close behind with a GTPI of +2412 and GPA-LPI of +3335 both heifers are owned by Al.Be.Ro, Diamond Genetics and Ponderosa, Spain.

The full sister to Louise, Savage-Leigh Lil Linda EX-90-USA, has daughters by Goldwyn and Dundee. Tom Mercurio of Mercurio Farms owns an EX-91-USA Dundee (Ms Do-N-Joy Dunde Laurie) daughter of Lil Linda. Mercurio is extremely satisfied with the consistency of the family sharing,

"I never worked with a cow family from which I got so many good calves and cows, they all have that great open dairy frame and beautiful udders, that milk really well. This family is extremely consistent."

Do-N-Joy Gold Lin-Rae VG-87-USA, owned by Do-N-Joy Holsteins, Minnesota, is a maternal sister by Goldwyn to Laurie. She has a Gabor son at Accelerated, Fb D-N-J Gabor Link-ET GTPI+2185. Lin-Rae also has a VG-88-USA Baxter daughter, Do-N-Joy Baxter Loree, who has a Beacon daughter with a GTPI of +2102. Loree's full sister, Do-N-Joy Baxter Lilly VG-86-USA, has a high-ranking Iota daughter, Do-N-Joy Iota Lilac GTPI+2227.

Liza

Another dominant breeding line is the one of Linda's Leduc daughter, Savage-Leigh Leduc Liza EX-90-USA. Liza has an EX-90-USA Zenith daughter, Savage-Leigh Zenith Liz who is the dam of Savage-Leigh NH Mac Liza VG-87-DE owned by Nosbisch, Germany. Savage-Leigh Golden Liz-ET EX-93-CAN is her highest scoring daughter and is owned by Idee Holsteins, Canada. Dean Craswell from Idee Holsteins: "We bought her as a second lactation cow at an auction because I really like the Linda cow family. They breed very consistent with great dairy frames, open rib, quality udders and they are silky black."

The maternal sister to Golden Liz, Savage-Leigh Golden Lizzy, is owned by Monanfran Farms and has an Observer daughter with a GPA-LPI of +3000, owned by Quality Holsteins, Ontario. She also has an EX-90-CAN Sanchez daughter, Monanfran-JS Sanchez Libby.

The Bellwood Linda cow family receives worldwide appreciation because of their consistent pattern of breeding. Dairy, great udders and silky black keeps showing up generation after generation. One thing is for sure; we have not seen the last from the Lindas.

SAVAGE-LEIGH BELLWOOD LINDA

♀ **Savage-Leigh Glenview Linda** EX-90 GMD DOM
(s. Carnation Glenview Joe)

♀ **Savage-Leigh Star Linda** VG-87 GMD
(s. To-Mar Blackstar)

♀ **Savage-Leigh Bellwood Linda** EX-92 GMD DOM
(s. Maizefield Bellwood)



♀ **Petinesca-I Durham Ladina** VG-89-CAN 6*
(s. Regancrest Elton Durham)

♀ **Savage-Leigh Z Linzy** EX-92-USA
(s. Ocean-View Zenith-TW)

♀ **Savage-Leigh Lottery** EX-91 GMD DOM
(s. Dixie-Lee Aaron)

♀ **Savage-Leigh Aaron Linn** VG-88 GMD DOM
(s. Dixie-Lee Aaron)

♀ **Savage-Leigh Linn** EX-92-USA GMD
(s. Indianhead Red-Marker)

♀ **Savage-Leigh Lynette** VG-87-USA
(s. Wa-Del Convincer)

♀ **Savage-Leigh Aaron Lynn** VG-87 GMD DOM
(s. Dixie-Lee Aaron)

♂ **Savage-Leigh Leland** EX-94-USA
(s. Regancrest Elton Durham)

♂ **Savage-Leigh Lariat** EX-94-USA
(s. Ricecrest Jordan)

♀ **Savage-Leigh Leduc Liza** EX-90 GMD
(s. Lystiel Leduc)

♀ **Savage-Leigh Louise** EX-94 GMD DOM
(s. Dommandale Skychief)

♀ **Savage-Leigh Lili Linda** EX-90 GMD DOM
(s. Dommandale Skychief)

♀ **Do-N-Joy Gold Lin-Rae** VG-87-USA DOM
(s. Braedale Goldwyn)

♀ **Ms Do-N-Joy Dunde Laurie** EX-91-USA
(s. Regancrest Dundee)

♀ **Ms Do-N-Joy Dunde Lexus** VG-88-USA
(s. Regancrest Dundee)

♀ **Savage-Leigh Licorice** EX-92 GMD DOM
(s. Regancrest Elton Durham)

♀ **Savage-Leigh Licorice-3-ET** EX-94-USA
(s. Regancrest Elton Durham)

♀ **Savage-Leigh Licorice-8-ET** EX-92-USA
(s. Regancrest Elton Durham)

♀ **Savage-Leigh Licorice-5-ET** EX-90-USA
(s. Regancrest Elton Durham)

♀ **Calbrett Shottle Lucy** EX-94-USA
(s. Picston Shottle)

♀ **Calbrett Shottle Linda** VG-88-USA
(s. Picston Shottle)

♀ **Ms Rockhome Baxter Lucky** VG-87-USA
(s. Emerald-Acr-SA T-Baxter)

♀ **Petinesca Phenomenal Tribute** EX-90-CAN
(s. Petinesca Tribute)

♂ **Generations Lobo** EX-92-CAN
(s. Braedale Goldwyn)

♀ **Savage-Leigh Lauren** EX-91-USA GMD
(s. Comestar Outside)

♂ **Savage-Leigh Lucius** VG-88-USA
(s. Comestar Outside)

♂ **Tan-Rok Darvish**
(s. Hidden-View Best)

♂ **Savage-Leigh Limelight** EX-94-USA
(s. Calbrett-I H H Champion)

♀ **Savage-Leigh Lizzie** VG-86 GMD DOM
(s. Calbrett-I H H Champion)

♀ **Savage-Leigh Leighanna** EX-91-USA GMD
(s. Calbrett-I H H Champion)

♀ **Savage-Leigh Zenith Liz** EX-92-USA
(s. Ocean-View Zenith-TW)

♀ **Savage-Leigh Golden Liz** EX-93-2E-CAN
(s. Braedale Goldwyn)

♀ **Savage-Leigh Gold Lizzy** VG-87-CAN DOM
(s. Braedale Goldwyn)

♀ **Savage-Leigh Durham Lynn** EX-90-USA
(s. Regancrest Elton Durham)

♀ **All Nure Elegant Bulestar** VG-88-IT
(s. Honeycrest Elegant)

♀ **Savage-Leigh Dundee Lou** EX-92-USA
(s. Regancrest Dundee)

♀ **Savage-Leigh Lorelei** EX-90-USA
(s. Calbrett-I H H Champion)

♀ **Savage-Leigh Super Spot** VG-88-USA
(s. Charfesdale Superstition)

♀ **Savage-Leigh Lexey** EX-90-USA
(s. Hartline Titanic)

♂ **Savage-Leigh Goldlaser** PTAT+2.08 (8/13)
(s. Braedale Goldwyn)

♀ **Savage-Leigh Gold Linda** EX-91-USA
(s. Braedale Goldwyn)

♀ **Savage-Leigh Gold Lyra** VG-85-CAN
(s. Braedale Goldwyn)

♀ **Savage-Leigh Gold Lilly** VG-86-USA
(s. Braedale Goldwyn)

♀ **Savage-Leigh Gold Lona** EX-92-USA
(s. Braedale Goldwyn)

♀ **Savage-Leigh Lola** EX-93-USA
(s. Picston Shottle)

♀ **Sterndale Shottle Licorice** VG-85-UK
(s. Picston Shottle)

♀ **Ridgedale Licorice Dundee** VG-85-UK
(s. Regancrest Dundee)

♀ **Sahara Talent Licorice 2** EX-90-UK
(s. Ladino-Park Talent-IMP)

♀ **Savage-Leigh Lavish** EX-94-USA
(s. Ladino-Park Talent-IMP)

♂ **Savage-Leigh Lydon** EX-94-USA
(s. Ladino-Park Talent-IMP)

♀ **Savage-Leigh Lavisha** VG-89-USA
(s. Jenny-Lou Mirshl Toystory)

♀ **Savage-Leigh Lavim** VG-88-CAN
(s. Jenny-Lou Mirshl Toystory)

♀ **Savage-Leigh Lavern** VG-88-USA
(s. Jenny-Lou Mirshl Toystory)

♀ **Savage-Leigh Sanchez Lae** VG-87-USA
(s. Gen-Mark Stmatic Sanchez)

♀ **Savage-Leigh Sanchez Lei** VG-88-USA
(s. Gen-Mark Stmatic Sanchez)

♀ **Savage-Leigh Leona** EX-96-USA
(s. Canyon-Breeze Allen)

♀ **Savage-Leigh Leola** EX-91-USA
(s. Canyon-Breeze Allen)

♀ **DKR Linda** VG-87-RR
(s. Stol Joc)

♀ **DKR Licorice** VG-86-NL
(s. Stol Joc)

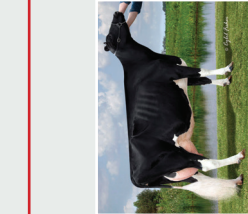
♀ **DKR Sandy-Valley Lexus** VG-85-NL
(s. Stol Joc)

♀ **Bouw Shamrock Lizette** GTPI+2275 (8/13)
(s. Ladys-Manor PI Shamrock)

♀ **Cowarol E Allen Licorice** VG-86-AUS
(s. Canyon-Breeze Allen)

♀ **Eclipse Cowarol Alexander Licorice** VG-85-AUS
(s. Golden-Oaks St Alexander)

♀ **Cowarol Eclipse Alex Licorice** VG-87-AUS
(s. Golden-Oaks St Alexander)



♀ **Whittier-CF Goldwyn Lucy** EX-93-USA
(s. Braedale Goldwyn)

♀ **Mac Lucinda** VG-85-NL
(s. Regancrest-HHF Mac)

♀ **Hood Mac Lucy** VG-89-DK
(s. Regancrest-HHF Mac)

♀ **Whittier-CF Atwood Love** VG-88-USA
(s. Maple-Downs-I G W Atwood)

♀ **Whittier-CF Atwood Legacy** VG-87-USA
(s. Maple-Downs-I G W Atwood)

♀ **Whittier-CF Mac Lucina** VG-88-CAN
(s. Regancrest-HHF Mac)

♀ **Lookout Pesce Goldwyn Lucy** VG-85-CAN
(s. Braedale Goldwyn)

♂ **Lookout P Last Chance** GPA-LPI+2799
(s. Maple-Downs-I G W Atwood)

♂ **Lookout Pesce Atw Lets Go** GPA-LPI+2618
(s. Maple-Downs-I G W Atwood)

♀ **Cedar-Haven Potter Lizza** EX-92 GMD DOM
(s. Braedale Goldwyn)

♀ **Savage-Leigh NH Mac Liza** VG-87-DE
(s. Regancrest-HHF Mac)

♀ **Quiet-Man Alex Lily** VG-85-USA
(s. Golden-Oaks St Alexander)

♀ **Monanfran-JS Ob Lingerie** GPA-LPI+3000
(s. De-Su Observer)

♀ **Monanfran-JS Snchz Libby** EX-91-CAN
(s. Gen-Mark Stmatic Sanchez)

♀ **Monanfran-JS Prt Lucky** VG-87-USA
(s. Windy-Knoll-View Pronto)

♂ **All Nure Starblue** GTPI+2218 (8/13)
(s. Long-Langs Oman Oman)

♀ **All Nure (197)** GTPI+2231 (8/13)
(s. Long-Langs Oman Oman)

♀ **All Nure Supersire Eleanor** GPA-LPI+3390
(s. Seagull-Bay Supersire)

