

# RUSTY branch of the Lead Maes



## Top scores for breeder satisfaction

In one of the first editions of Hotspots, we reported on the extraordinary brood cow Whittier-Farms Lead Mae whose influence seemed to be growing daily. Since then the various lines have continued to develop worldwide. After talking to several dairymen we learned that if breeder's satisfaction could be captured in a trait, the Lead Mae family members would definitely score very well.

### Diverse family lines

The list of the tremendous brood cows that this family produced is nearly endless; think about the Durham Mae line at Morningview Farms in Iowa that produced bulls like Kingboy. Green-Corner Bolt Mattie who left several high-ranking offspring in the herd of Steve and Janet Keller, K-Manor Holsteins, Wis. Or the lines that go back to Elly Mae, Elly and Elita producing cows like Wabash-Way Emilyann and Wabash-Way Evett. From the Elitas, many successful lines have been developed at herds such as Velthuis Farms and Stanton Brothers Ltd in Ontario. During the August index run, a S-S-I Montross Jedi daughter from Stantons took the No. 1 spot on the GTPI list, scoring a smashing +2911 GTPI. While a McCutchen daughter is the No. 1 GLPI Cow in Canada; both females trace back to Emilyann. On the mating sire lists, Silverridge V Imax will be popular this fall and goes back to the well-known Snowman sisters at Velthuis.

It would take an entire magazine to capture all the various lines of the family, so the focus of this article will be on the main performing

European line. The line that goes back to an imported Durham embryo sold by Don Mayer, Mayerlane Holsteins, Wis. and Dr. Scott Armbrust.

### Background

Don Mayer shares, "We bought Lead Mae in the late 1990s together with our partner Dr. Scott Armbrust. At the time we bought her in the Bruce Smith dispersal, she was a dry cow but already scored Excellent-94 in her second lactation, something that is not possible anymore today."

Mayer heard rumors that the Blackstar dam of Lead Mae was one of the best young daughters of the popular mating sire. Unfortunately, Raymau Bstar Monica was lost shortly after scoring Very Good-89 as a result of an allergic reaction to a vaccination. "The positive rumors, the fantastic sire stack and pedigree with many high scoring cows and the fact that Leadman was hot made it an easy decision to buy Lead Mae," says Mayer.

And he never regretted the decision. After arrival, Lead Mae was flushed for another 18 months. The demand for Lead Mae genetics was tremendous; "We couldn't make them quick enough, many embryos went overseas to Japan and Europe," shares Mayer. The mating sires were always carefully selected by the owners, one being Durham. "At the time Durham was an easy choice, he is backed by a great pedigree and I was impressed by the early daughters I saw during my travels."

**Marwil Willie VG-88-NL 4yr.**  
Dam of Ven Dairy Wonder



*Han Hopman*





**Whittier-Farms Lead Mae EX-95-USA**  
The foundation cow behind numerous great ones



**Marwil Rusty VG-89-NL**  
Dam of the high indexing Snowmans



**JHS Rusty 17 VG-85-NL 2yr.**  
Huge transmitter for the current highest Rustys

## European start

One of these embryos as mentioned earlier resulted in Marwil Leadmae 1 (VG-88), who inherited the brood cow qualities from Lead Mae and started to be a very strong force in various European systems.

Daughters from this Durham sired by Goldwyn and Titanic have done tremendous work for Vendairy, Netherlands and Southland Holsteins, Netherlands. At Vendairy the Goldwyn daughter A-L-H Willie (VG-88) produced Vendairy Wonder (s: Shottle) a former high ranking genomic sire that received a really nice proof and remains popular for his owners AI Total and Ascol. Titanic daughter, Marwil Leadmae Tanika, is considered one of the best Titanic daughters in Europe and scored Excellent. Several of her daughters scored Very Good and tested high for genomics. Tanika's most well-known daughter is Marwil Rusty (VG-89) and sired by Shottle. Rusty was owned by Jan van Soelen, JHS Holsteins, Netherlands who shares, "We already had two Goldwyn daughters from the Lead Mae family in our barn, Jantina and Alexia who both did very well for us. From the two, the offspring of Alexia milk probably a little better but the Jantinas certainly made a name for themselves." A Chevrolet granddaughter of JHS LeadMae Jantina (VG-85) was top seller in the Luxembourg Summer Classic Sale 2014 selling to Rhala Holsteins, Excellent and Diamond Genetics where she was flushed and now has progeny by Hurricane, Battlecry and Gambler. Jantina 79 herself is due end of October and looks promising.

## Successful Snowman mating

However, the most successful member of the Lead Mae family at JHS Holsteins is Marwil Rusty (VG-89) and still in the herd today. Van Soelen shares, "Rusty is still performing well, scored VG-89 and has almost produced 100,000 kg of milk." Rusty's most successful flush was to Snowman producing several full sisters; of which the highest two in the JHS herd score Very Good-87. A first choice of the Snowman pregnancies sold during the Holland Master Sale in 2012 to Zwambag, Netherlands. Jan Postma, Diamond Genetics visited JHS Holsteins following the Holland Masters Sale in 2012 to make the final selection. Postma shares, "After looking at the three calves that were offered and their genomic figures, we selected the highest calf that scored GTPI+2202 and gRZG+140 at the time. In our eyes she was also the best calf of the three." A full brother to the Snowman sisters, JHS Snowrush, is the former No. 1 on the Dutch GNVI system and a very popular sire in Europe for CRV.

The first choice selection, JHS Rusty 17 (VG-85), became a valuable member of the breeding program at Zwambag and was flushed several times leaving daughters by Galaxy and Supersire. The Supersire daughter accelerated the family's rise to the top of the index lists. Postma shares "All the embryos that were available from the Supersire [Rusty 2] were sold to Germany, UK, France and the

Netherlands and the buyers of these embryos certainly never regretted their purchases." Rusty 2 has a Gambler son at Ascol in Spain that scores GTPI+2507 with a really nice balanced proof including scores over 2 points for udders, feet and legs and PTA Type but more impressive are her performances on the female side.

The highest daughter of Rusty 2 is Col Rustymarry scoring GTPI+2702 and making her the highest GTPI Emerald daughter worldwide and one of the highest flush-age heifers in Europe. She is owned by Genesland, Germany and displays a very balanced proof with over +2000 pounds PTA Milk, +149 pounds combined Fat and Protein and over 2 points on PTA Type. But this is not the only No. 1 ranking female from Rusty 17. DKR Rihanna GTPI+2675 is the No. 1 GTPI AltaSpring daughter in Europe and also ranks in the Top 25 GTPI flush-age heifers. A full sister to Rihanna, DKR Rusty, sold during the Vekis Spring Sale 2016 and is now owned by Vliek Holsteins, Netherlands and scores GTPI+2554. Other high-ranking daughters include full sisters by Dozer, DKR Ruby Rose GTPI+2630 and ORD DKR Hadley GTPI+2605.

Snowman Rusty 17 and Supersire Rusty 2 are now both in the herd of Twin Genetics, Netherlands where they are working on their career as brood cows. The Snowman is fresh again and working on a really good record and will be re-scored soon.

Proven above, the Lead Mae family continues their rich tradition of delivering exceptional new brood cows to the industry like the Rusty line in Europe. They also continue to 'score very high on breeder satisfaction' according to dairymen across the globe.



**Ven Dairy Wonder**  
Shottle x Goldwyn x Durham x Lead Mae

# The European LEAD MAE branch

♀ **La-Ko-Land Monitor Nancy EX-90**  
(s. Fletridge Monitor)

♀ **La-Ko-Land Bootmaker Sally VG-86**  
(s. Paclamer Bootmaker)

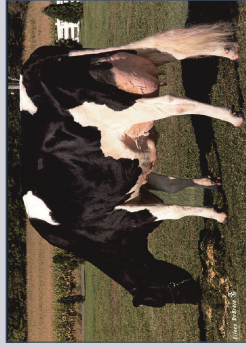
♀ **La-Ko-Land Penstata Sadie VG-87**  
(s. Penstata Ivanhoe Star)

♀ **JDM-Pride Valiant Maggie EX-91**  
(s. S-W-D Valiant)

♀ **Juniper Jason Maria VG-87**  
(s. Pinta-Lane Conductor Jason)

♀ **Raymau Bstar Monica VG-89**  
(s. To-Mar Blackstar)

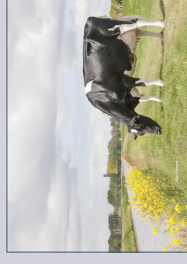
♀ **Whittier-Farms Lead Mae EX-95**  
(s. Rothrock Tradition Leadman)



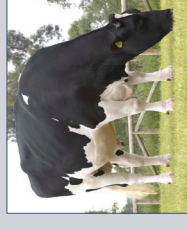
♀ **Marwil Leadmae 1 VG-88**  
(s. Regancrest Elton Durham)



♀ **Alh Goldwyn Willie VG-88**  
(s. Braedale Goldwyn)



♂ **Ven Dairy Wonder**  
(s. Picston Shottle)



♀ **Marwil Leadmae Tanika EX-90**  
(s. Hartline Titanic)



♀ **Marwil Rusty VG-89-NL**  
(s. Picston Shottle)



♀ **JHS Rusty 17 VG-85-NL 2Yr.**  
(s. Flevo Genetics Snowman)



♀ **Rusty 2 VG-85-NL 2Yr.**  
(s. Seagull-Bay Supersire)



♀ **DKR Rihanna (8/16 GTPI +2675)**  
(s. Westenrade Alta Spring)



♀ **Col Rustymary (8/16 GTPI +2702)**  
(s. Mr. Ood Emerald CRI)

♀ **DKR Ruby Rose (8/16 GTPI +2630)**  
(s. Mr. Shot Dozer 1491)

♀ **DG DV Rustique (8/16 GTPI +2565)**  
(s. Le-O-La Gambler)

♀ **DKR Rusty (8/16 GTPI +2554)**  
(s. Westenrade Alta Spring)

♀ **Ord DKR Hadley (8/16 GTPI +2605)**  
(s. Mr. Shot Dozer 1491)



♂ **JHS Snowrush**  
(s. Flevo Genetics Snowman)

