



Member Highlights | Dairy News | Industry Events

Member Highlight **Willows-Edge Holsteins**

Willows-Edge Holsteins, owned by Henk and Bonnie Van Dyk, is located in the rolling hills of New Richmond, Wisconsin. The farm consists of 85 milking animals and 660 acres of tillable crop ground where they grow alfalfa, grass hay, corn and soybeans. Most of the crops are kept on the farm to feed the animals and the excess is sold.

Starting in 1996, the Van Dyk's began hosting sales on the farm every other year. These sales included show heifers and young cows from their herd. Known as some of the top private sales, they consistently averaged around \$4,800. Sales boasted excellent attendance and continued until 2009. In 2017, the farm hosted their final sale, marking Henk's official retirement from the farm, following his retirement from practicing law five years prior. At this point, Bonnie left her day job to work on the farm full time.

Over the years, Willows-Edge has produced over 400 homebred Excellent animals and been awarded 37 All-American and Jr. All-American Nominations. They have been awarded the title of Premier Breeder at the Wisconsin State Holstein Show and the Midwest Fall National Show multiple times and earned the same title at World Dairy Expo in 2003.



2020 August Newsletter

August Intermediate Proof

Top 5 GTPI Proven Bulls

1. 14H007770 **HELIX**

Silver x Supersire x Man-O-Man

+2942 GTPI

Select Sires

2. 29H018225 **BURLEY**

Boastfull x AltaOak x O-Style

+2917 GTPI

Select Sires

3. 7H013454 **ROCKETFIRE**

Josuper x Sterling x Robust

+2869 GTPI

Select Sires

4. 4H007796 **GRIFF**

Silver x Supersire x Man-O-Man

+2864 GTPI

Select Sires

5. 29H018296 **ACHIEVER**

Yoder x AltaFrido x Robust

+2839 GTPI

ABS Global

View all top ranking lists on
holsteinplaza.com/top-genetics

Pictured Left: The Farm at
Willows-Edge Holsteins
New Richmond, WI

1515 Livingstone Road, Suite B, Hudson, Wisconsin 54016, USA

info@holsteinplaza.com | holsteinplaza.com

Phone: +1 715-808-8653 | Fax: +1 715-808-8564

**Top 5 GTPI Young Bulls
(With NAAB Code)**

1. 29H019555 HERCULES

Heroic x Frazzled x Delta
+3065 GTPI
ABS Global

2. 7H015167 GAMEDAY

Big Al x Blowtorch x Yoder
+3060 GTPI
ABS Global

3. 29H019518 MENDEL-P

Entity x Windfall x Powerball P
+3060 GTPI
ABS Global

4. 29H019728 GARDNER

Heroic x Medley x Profit
+3041 GTPI
ABS Global

5. 551H004119 CAPTAIN

Charl x Sabre x Ahead
+3036 GTPI
STGenetics

**Top 5 GTPI Calves
(Under 9 Months Old)**

1. PEAK 63092-ET

AltaPlinko x Crimson x Frazzled
+3090 GTPI
Alta Genetics - Peak Program

2. COOKIECUTTER A HOMILY-ET

Big Al x Reason x Rubicon
+3081 GTPI
Alta Genetics - Peak Program

**3. SIEMERS SLN HANINA
33232-ET**

Solution x Duke x Monterey
+3072 GTPI
Siemers Holsteins

4. PEAK OSHA-ET

Torro x Marius x AltaTopshot
+3056 GTPI
Alta Genetics - Peak Program

5. HORSENS SSI PR 6961-ET

Maximus x Solution x Outsiders
+3055 GTPI
Brian, Glenn & Adam Preston

Member Highlight continued...

Their current genetic program involves using high quality black and red type sires, while also being conscientious of components. Cow families are important in making breeding decisions, as well as the phenotype of the sires being used. They look to create consistency in high type females on the farm and part of that is being consistent in the bulls being used. Willows-Edge uses a small battery of bulls including: Absolute, Altitude, Atwood, Diamondback, Denver, Unix, and Unstoppabull.

To learn more about Willows-Edge Holsteins, visit their breeder page at HolsteinPlaza.com/Willows-Edge.

Successful donor dams to come from the Willows-Edge program include:



Ms D Angel Denisha RC EX-92

Doorman x Damion x Regiment-Red
Grand Champion & Best Udder, WI District 1 Holstein Show 2020

**Top 5 GTPI Heifers
(9-30 Months Old)**

1. MELARRY TRY ME 1639-ET

Try Me x Frazzled x Director
+3030 GTPI

Melvin C. & Spencer C. Hacke

2. S-S-I LA 28180 22861-ET

Legacy x Imax x Delta
+3028 GTPI
Larson Acres, Inc.

3. CHERRYPENCOL L LEE-ET

Legacy x Rolan x Jedi
+3028 GTPI
Melvin C. & Spencer C. Hacke

4. CO-OP BLUSH 44601-ET

Solution x Achiever x Silver
+3028 GTPI
Alta Genetics - Peak Program

**5. LEVEL-PLAIN ACURA
VIBE-ET**

Acura x Achiever x Delta
+3027 GTPI
Keith A. Nettekoven

1515 Livingstone Road, Suite B, Hudson, Wisconsin 54016, USA

info@holsteinplaza.com | holsteinplaza.com

Phone: +1 715-808-8653 | Fax: +1 715-808-8564



Lake-Breeze Def Careful-Red EX-92
 Defiant x Absolute-Red x Kite
 Grand Champion, WI District 1 Holstein Show 2019
CURRENTLY ON A FLUSH PROGRAM



Willows-Edge Bolton Flicker EX-94
 Bolton x Outside x Skychief
 Grand Champion, WI District 1 Holstein Show 2014
 Dam of Multiple Bulls in AI & Many Successful Females

Top 5 LPI Proven Bulls

- 1. 11H011655 ALTAMARLON**
 AltaSpring x O-Style x Planet
+3534 LPI
 Alta Genetics
- 2. 551H003379 DELTA-LAMBDA**
 Delta x Numero Uno x Snowman
+3519 LPI
 STGenetics
- 3. 250H013531 TOTEM**
 Millington x Jacey x Sudan
+3498 LPI
 Select Sires
- 4. 200H010593 ALLIGATOR**
 Kingboy x Mccutchen x Observer
+3475 LPI
 Semex
- 5. 151H000681 RUBICON**
 Mogul x Robust x Planet
+3464 LPI
 STGenetics

Top 5 LPI Young Bulls (With NAAB Code)

- 1. 94H007188 MANHATTAN**
 Positive x Guarantee x Duke
+3795 LPI
 Semex
- 2. 551H003379 MEZZOFORTE**
 Positive x Guarantee x Duke
+3780 LPI
 Semex
- 3. 200H011771 PIXEL**
 AltaRobert x Granite x Rubicon
+3777 LPI
 Semex
- 4. 250H015240 HEART**
 Renegade x Frazzled x Montross
+3755 LPI
 Select Sires
- 5. 250H015087 ROZLINE**
 Renegade x Frazzled x Rubicon
+3755 LPI
 Select Sires

1515 Livingstone Road, Suite B, Hudson, Wisconsin 54016, USA

info@holsteinplaza.com | holsteinplaza.com

Phone: +1 715-808-8653 | Fax: +1 715-808-8564

**Pine Tree Dairy July 2020
Classification Highlights**

**PINE-TREE 4283CODIE
4918-ET**
Codie-P x Digital x Shottle
EX-92

**GREEN-BANKS DAMARIS
6586-ET**
Damaris x Tango x O-Man
EX-90

PINE-TREE 4811 DONJ 5571-ET
Don Juan x Signif-P x O-Man
EX-90

**PINE-TREE FREDDIE
ALEXIA-ET**
Freddie x Ramos x Boliver
EX-90

**CLEAR-ECHO PREDSTIN
2995-ET**
Predestine x Russell x Jet Stream
VG-88

PINE-TREE 4121 CAM 5310-ET
Predestine x Russell x Jet Stream
VG-88

PINE-TREE 6691 HANG 7429
Hang-Time x Delta x Monarch
VG-88

**PINE-TREE RAMOS
BRITANY-ET**
Ramos x Mtoto x Rudolph
VG-88

**PINE-TREE-GF 4831MANIF
6575**
Manifold x Toubib P RC x Goldwyn
VG-88

RI-VAL-RE SUNDREAM-ET
Espresso x Salvino x Mogul
VG-88

PINE-TREE 14 KINGBOY6666-ET
Kingboy x Robust x Planet
VG-87

Pine-Tree had 30+ additional cows
scored VG-85 or higher!



Willows-Edge Star Maiden EX-93
Stardust x Charles x Valedictorian
Nominated Junior All-American Aged Cow 2005
Junior All-Wisconsin Aged Cow 2005
Reserve Junior All-American 5-Year-Old 2004
Junior All-Wisconsin 5-Year-Old 2004



Willows-Edge Advent Malika EX-94
Advent-Red x Integrity x Stardust
Reserve Junior All-American 4-Year-Old 2011
Champion Bred & Owned Female, Grand National Junior Show 2011
Reserve Junior All-American 3-Year-Old 2010
Grand Champion, Midwest Fall National Junior Show 2010
Reserve All-Wisconsin Junior 2-Year-Old 2009

1515 Livingstone Road, Suite B, Hudson, Wisconsin 54016, USA

info@holsteinplaza.com | holsteinplaza.com

Phone: +1 715-808-8653 | Fax: +1 715-808-8564

**Congratulations to Holstein Plaza
Members on their recent success-
es in the show ring!**

**FARNEAR TBR ARIA ADLER
EX-95**

Senior & Grand Champion Holstein
Midwest Fall National
Iowa State Holstein Show
Farnear Holsteins

**WIL-O-MAR DIAMONDBACK
ROSE-RED VG-88**

Grand Champion Female
Ohio State B&W and R&W Shows
T-Triple-T Holsteins

**OAKFIELD REALITY HARMONY
EX-95**

Senior & Grand Champion Holstein
Champion Bred & Owned Female
New England Holstein Show
Oakfield Corners Dairy

KEVETTA DANIEL LEXI EX-92

Intermediate & Reserve
Grand Champion Holstein
New England Holstein Show
Oakfield Corners Dairy

**VELVET-VIEW RETURN-RED
EX-91**

HM Grand Champion Female
Ohio State B&W Holstein Show
Oakfield Corners Dairy

**OAKFIELD SOLOMON
FOOTLOOSE EX-91**

HM Grand Champion Female
Ohio State B&W Holstein Show
Oakfield Corners Dairy

**WILLOWS-EDGE UN
MAYBESO-RED**

Junior Champion Female
Best Bred & Owned Female
MN State R&W Show
Willows-Edge Holsteins

**To see more HP member show
results, visit our website at
HolsteinPlaza.com and follow
us on Facebooka at
Facebook.com/HolsteinPlaza!**

Industry Events

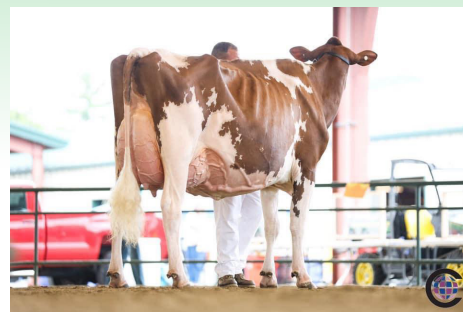
Aug. 23-29
Aug. 28-Sept. 3
Sept. 1
Sept. 3-4
Sept. 4-5
Sept. 11-17
Sept. 25-26

Wisconsin Summer Championship Show
Holstein Plaza Online Embryo Auction
Official Genetic Evalutaion Release
Western Naitonal Holstein Show
New York State Holstein Show
Holstein Plaza Online Embryo Auction
Southern Fall National Holstein Show

**Share your event details with thousands of industry members
across North America. Contact us today to have your event add-
ed to our monthly newsletter and advertised on our website!**



FARNEAR TBR ARIA ADLER



**WIL-O-MAR DIAMONDBACK
ROSE-RED**



OAKFIELD REALITY HARMONY



**WILLOWS-EDGE UN
MAYBESO-RED**

Photos Courtesy of Cowsmopolitan



1515 Livingstone Road, Suite B, Hudson, Wisconsin 54016, USA

info@holsteinplaza.com | holsteinplaza.com

Phone: +1 715-808-8653 | Fax: +1 715-808-8564